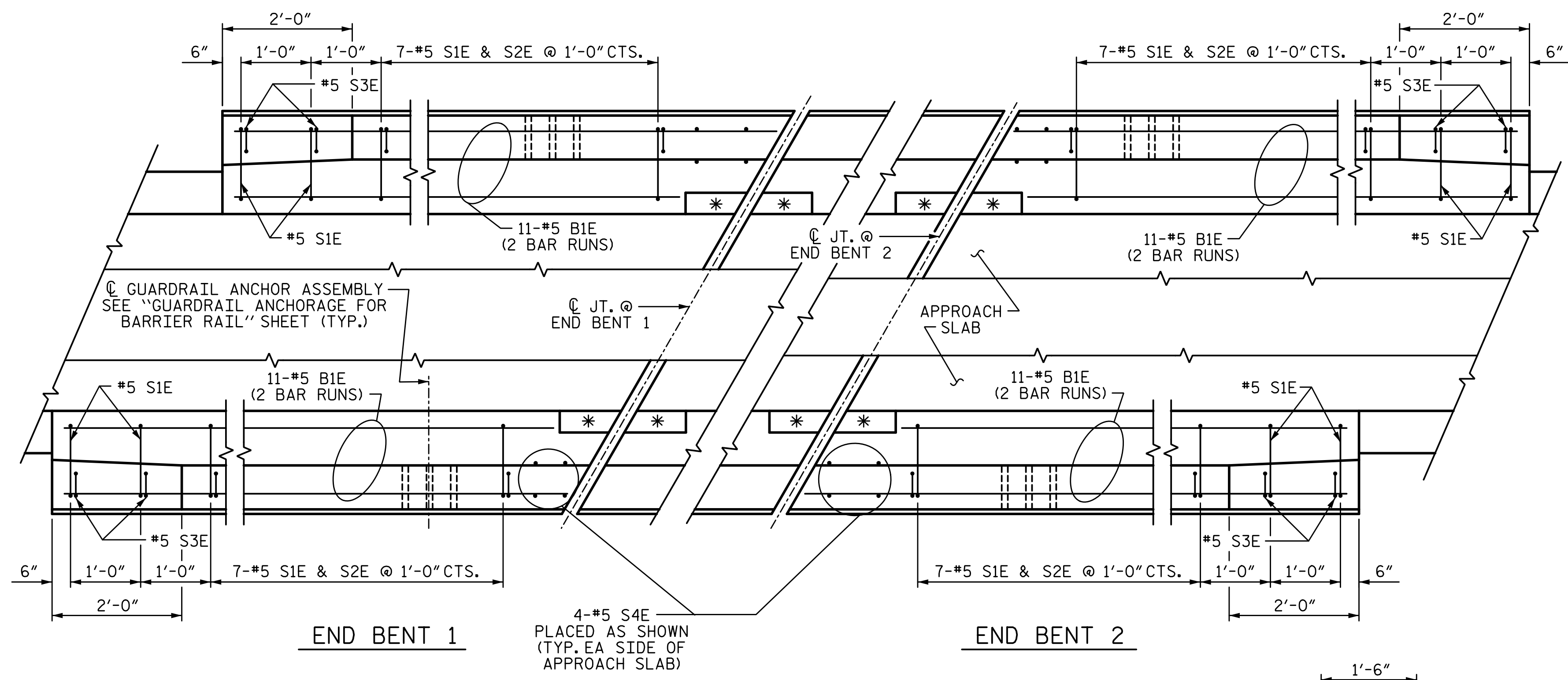


9/11/2015 10:16:51 AM G:\Projects\2014\U-3109A\Structures\Site 2\Site 2-Str 2 Bridge 436 (SBL)\Drawings\Final\402\_U3109A\_smu\_cs.dgn



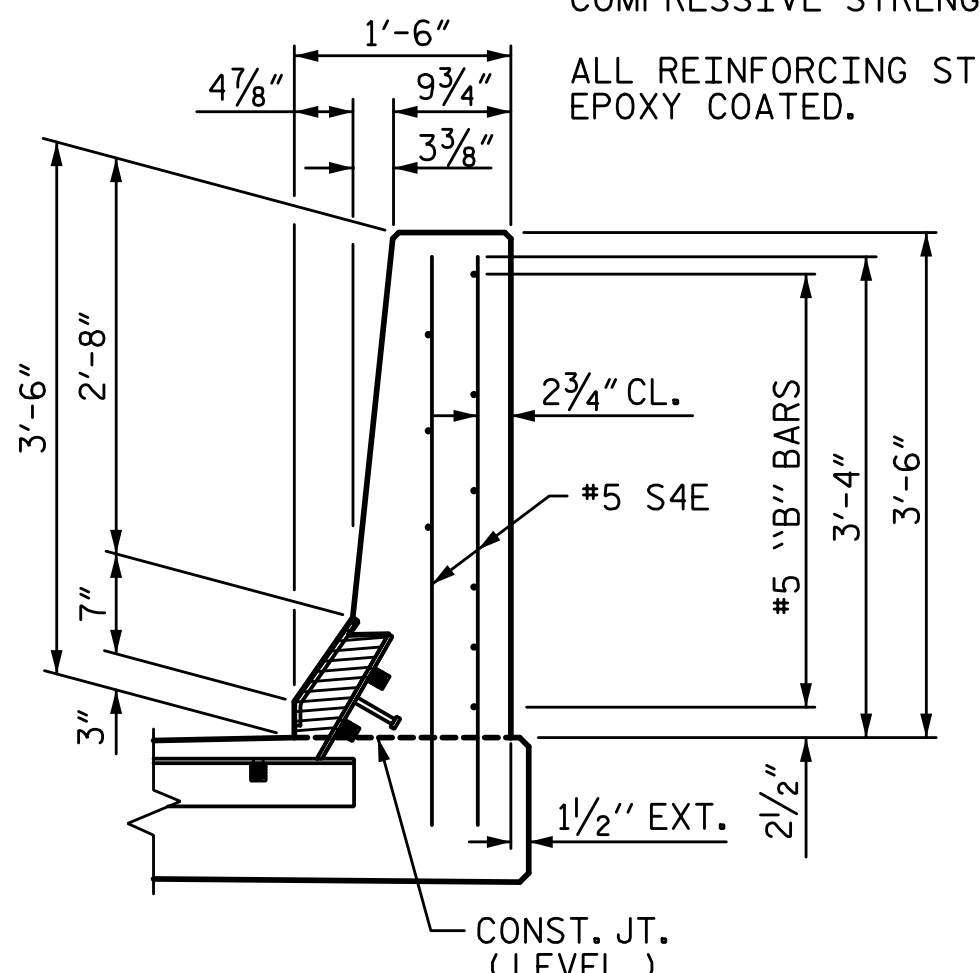
**PLAN OF BARRIER RAIL**

\* FOR BLOCKOUT DETAILS, SEE "EXPANSION JOINT SEAL DETAILS FOR BARRIER RAIL" SHEET 2 OF 2.

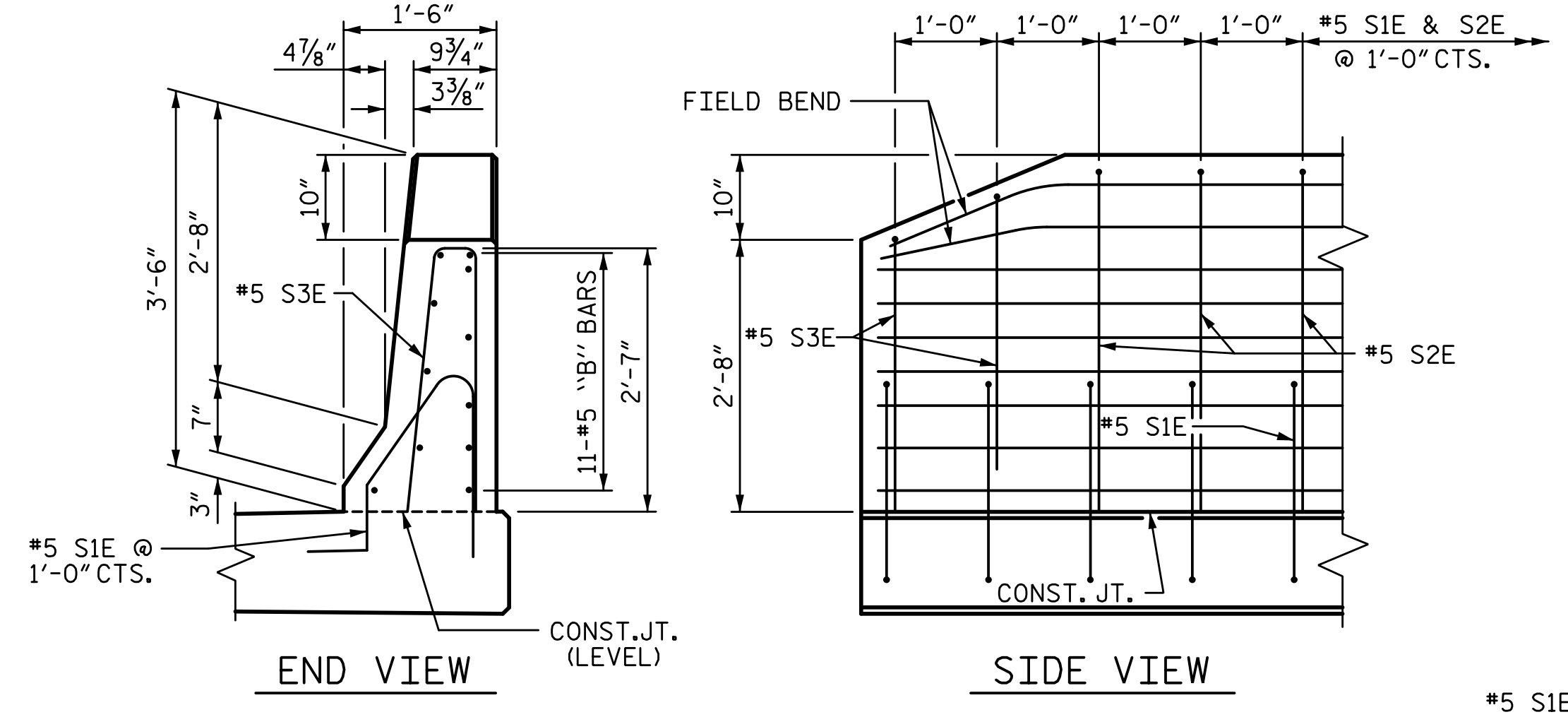
**NOTES:**

THE COST OF THE BARRIER RAIL ON THE APPROACH SLAB SHALL BE INCLUDED IN THE LINEAR FOOT CONTRACT PRICE BID FOR "CONCRETE BARRIER RAIL".  
 THE BARRIER RAIL ON EACH APPROACH SLAB SHALL NOT BE CAST UNTIL ALL APPROACH SLAB CONCRETE HAS BEEN CAST AND HAS REACHED A MINIMUM COMPRESSIVE STRENGTH OF 3,000 PSI.

ALL REINFORCING STEEL IN BARRIER RAILS SHALL BE EPOXY COATED.



**END VIEW @ EXP. JOINTS**



**END VIEW**

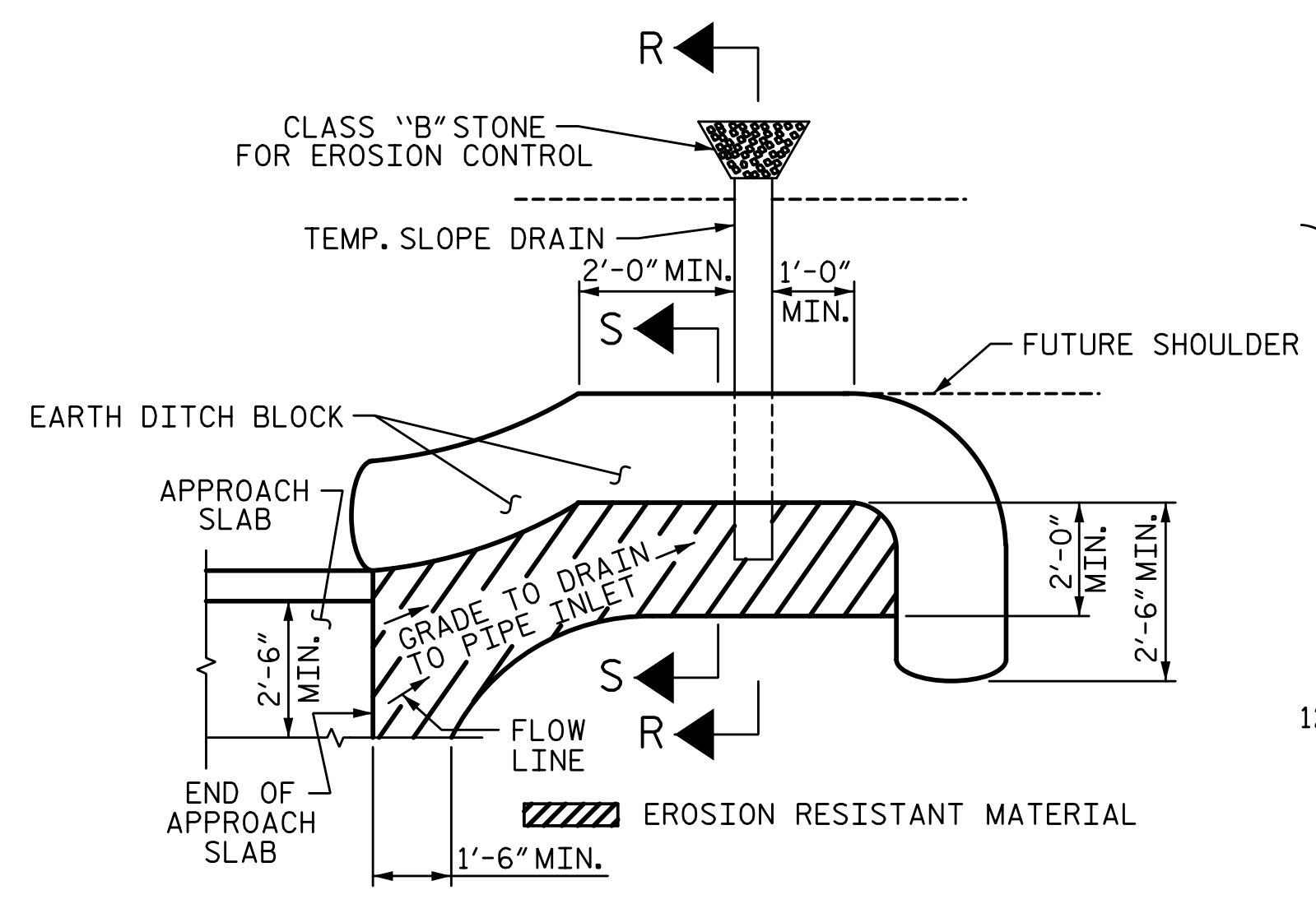
**SIDE VIEW**

**BAR TYPES**

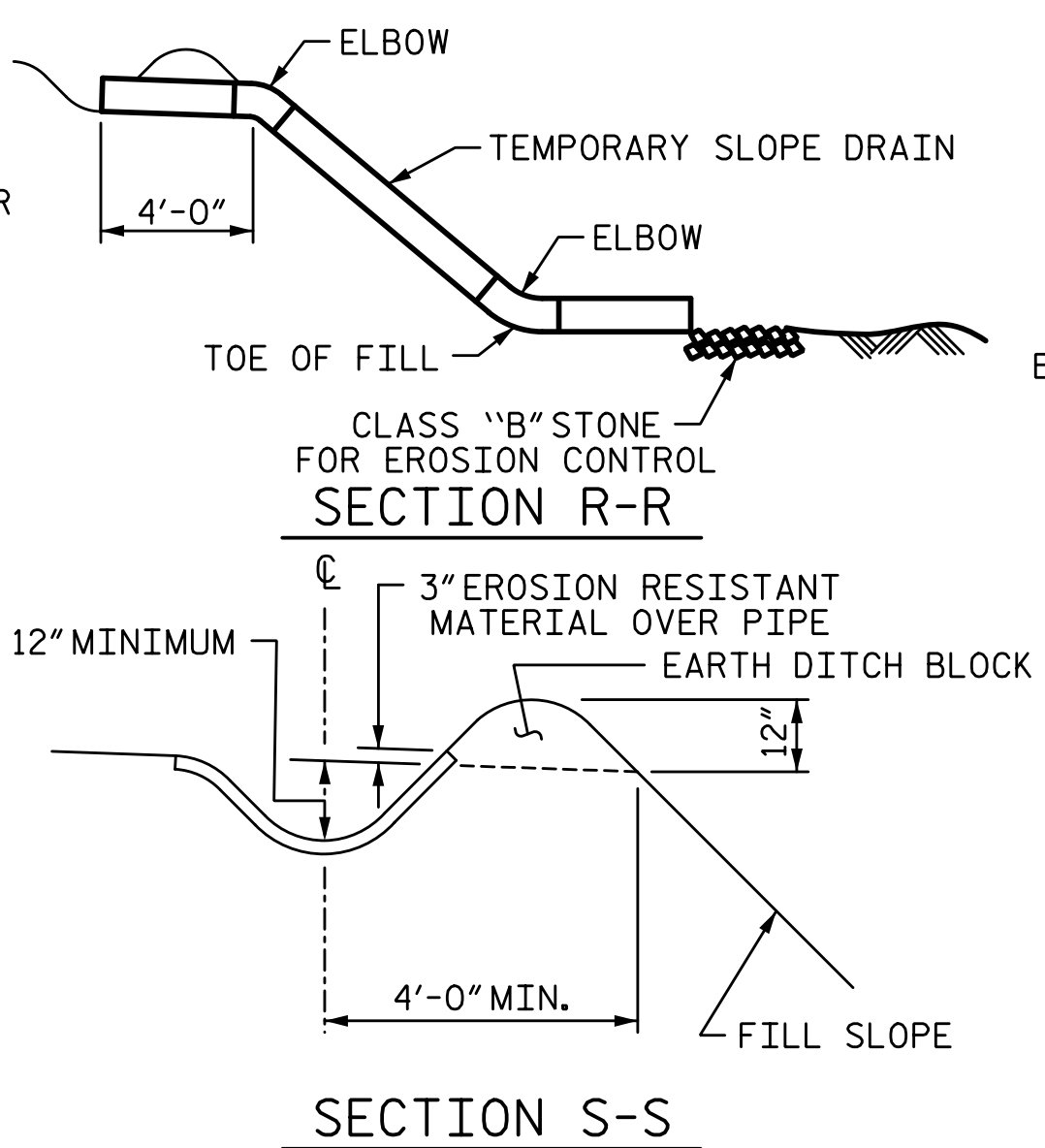
ALL BAR DIMENSIONS ARE OUT TO OUT

BILL OF MATERIAL					
BARRIER RAIL ONLY					
BAR	NO.	SIZE	TYPE	LENGTH	WEIGHT
B1E	88	5	STR	6'-10"	627
S1E	36	5	1	5'-1"	191
S2E	28	5	2	7'-0"	204
S3E	8	5	2	5'-6"	46
S4E	16	5	STR	4'-0"	67
EPOXY COATED REINFORCING STEEL					1135 LB
CLASS "AA" CONCRETE					5.4 CY
CONCRETE BARRIER RAIL					40.8 LF

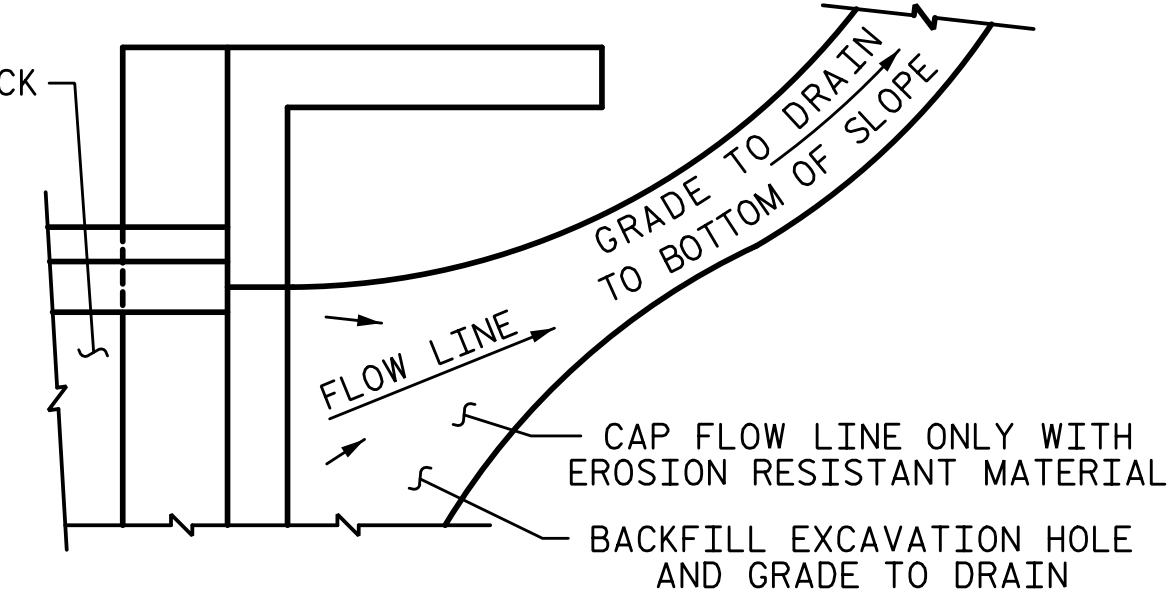
"E" INDICATES EPOXY COATED REINFORCING STEEL



**PLAN VIEW**

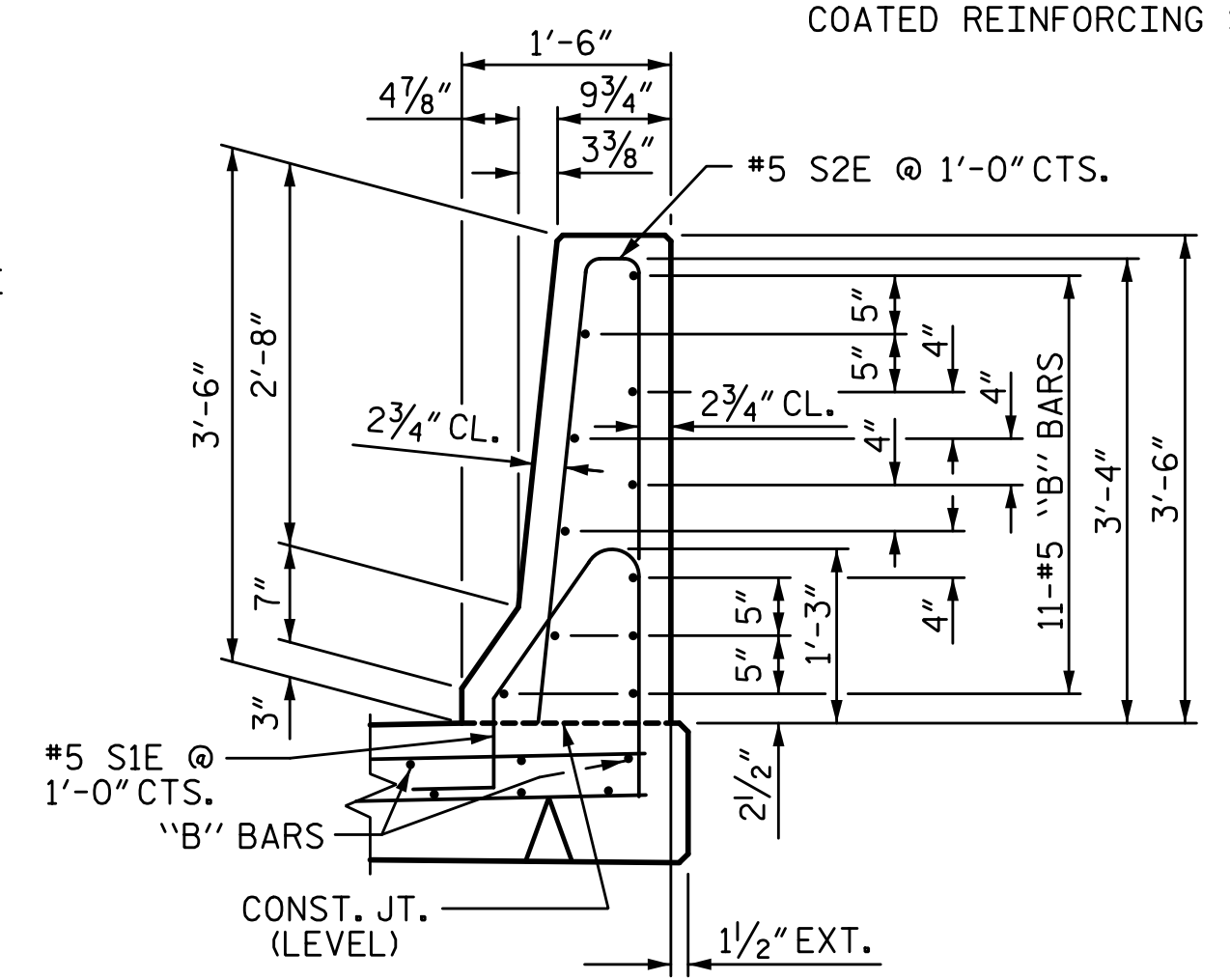


**SECTION S-S**



**TEMPORARY DRAINAGE DETAIL**

NOTE: IF THE APPROACH SLAB IS NOT CONSTRUCTED IMMEDIATELY AFTER THE BACKFILLING OF THE END BENT EXCAVATION, GRADE TO DRAIN TO THE BOTTOM OF THE SLOPE AND PROVIDE EROSION RESISTANT MATERIAL, SUCH AS FIBERGLASS ROVING OR AS DIRECTED BY THE ENGINEER TO PREVENT SOIL EROSION AND TO PROTECT THE AREA ADJACENT TO THE STRUCTURE. THE CONTRACTOR WILL BE REQUIRED TO REMOVE THESE MATERIALS PRIOR TO CONSTRUCTION OF THE APPROACH SLAB.



**SECTION THRU RAIL**

PROJECT NO. U-3109A  
ALAMANCE COUNTY  
 STATION: 146+61.35 -L-

SHEET 3 OF 3

STATE OF NORTH CAROLINA  
 DEPARTMENT OF TRANSPORTATION  
 RALEIGH

**BRIDGE APPROACH SLAB DETAILS**  
 (SBL)

REVISIONS					
NO.	BY:	DATE:	NO.	BY:	DATE:
1			3		
2			4		

SHEET NO. S02-51  
 TOTAL SHEETS S02-51

DRAWN BY: S.D. COOPER DATE: 9-15  
 CHECKED BY: J.A. BATTS DATE: 9-15  
 DESIGN ENGINEER OF RECORD: J.A. BATTS DATE: 9-15

**TEMPORARY BERM AND SLOPE DRAIN DETAILS**  
 (TO BE USED WHEN SHOULDER BERM GUTTER IS REQUIRED)

PLANS PREPARED BY:  
**SIMPSON & ASSOCIATES**  
 5640 Dillard Drive  
 Suite 200  
 Cary, NC 27518  
 (919) 852-0468  
 (919) 852-0598 (Fax)  
 www.simpsonengr.com  
 LICENSURE NO. C-2521



STR. #2