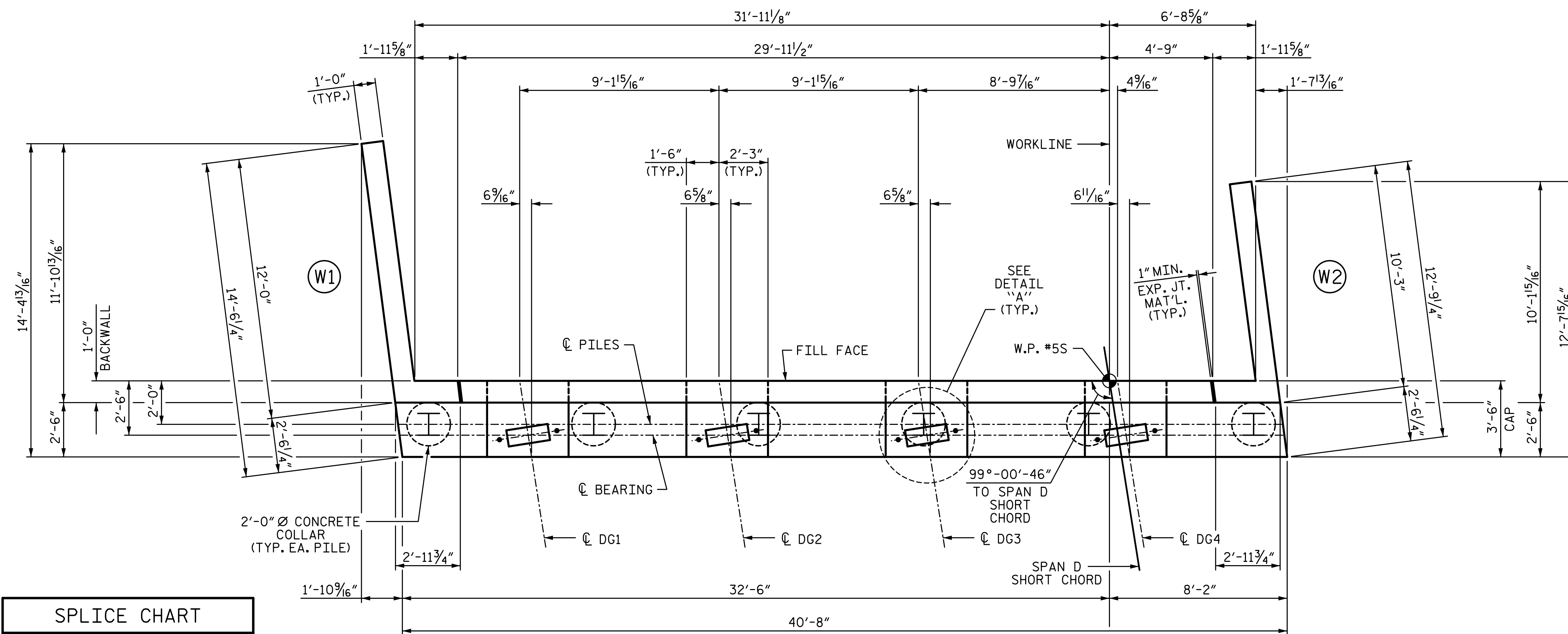


9/11/2015 10:16:50 AM G:\Projects\2014\U-3109A\Structures\Site 2\Site 2-Str 2 Bridge 436 (SBL)\Drawings\Final\402_U3109A_smu_eb2.dgn



SPLICE CHART	
#4 B3 SPLICE LENGTH =	2'-5"
#5 B5 SPLICE LENGTH =	3'-0"
#9 B6 SPLICE LENGTH =	12'-6"
#4 K1 SPLICE LENGTH =	2'-5"

NOTES:

STIRRUPS AND "U" BARS IN CAP MAY BE SHIFTED AS NECESSARY TO CLEAR ANCHOR BOLTS.

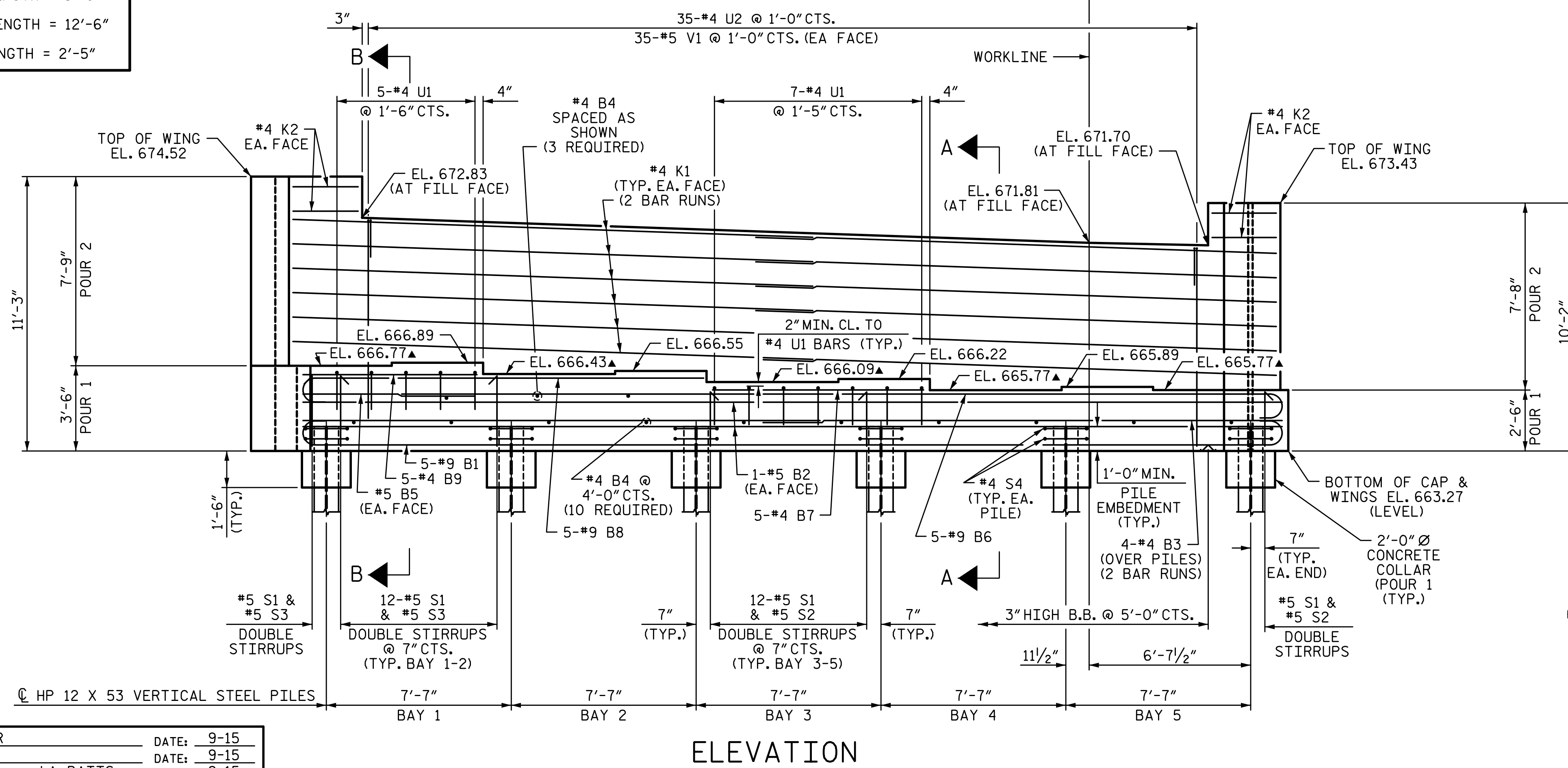
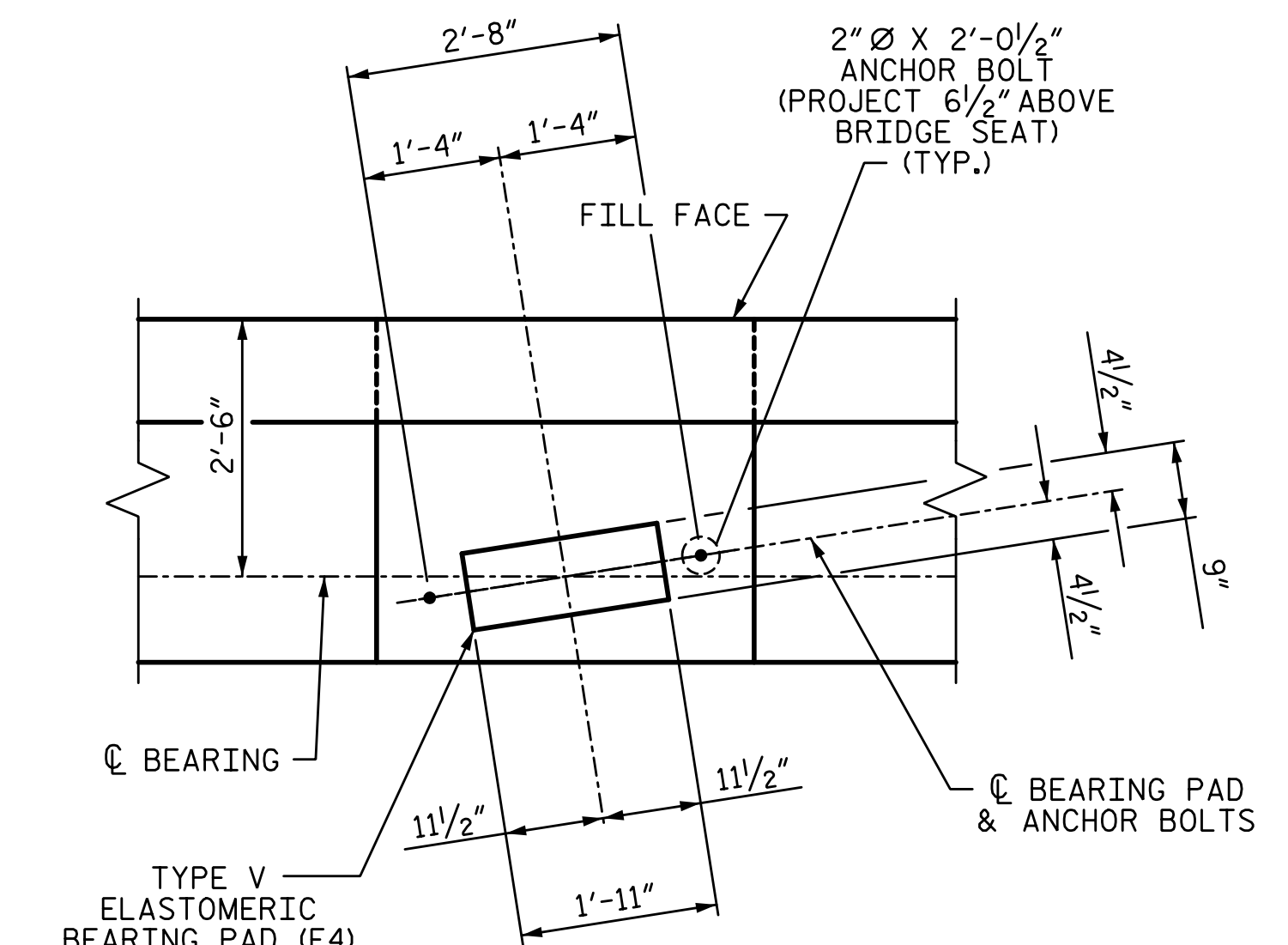
BACKWALL SHALL BE PLACED BEFORE APPLYING THE EPOXY PROTECTIVE COATING.

THE TOP SURFACE AREAS OF THE END BENT CAPS SHALL BE CURED IN ACCORDANCE WITH THE STANDARD SPECIFICATIONS EXCEPT THE MEMBRANE CURING COMPOUND METHOD SHALL NOT BE USED.

THE TOP SURFACE OF THE CAP EXCEPT THE BRIDGE SEAT BUILDUPS SHALL BE SLOPED TRANSVERSELY FROM THE FILL FACE TO THE BACK FACE AT THE RATE OF 2%.

SEE GENERAL DRAWING "FOUNDATION LAYOUT" FOR ADDITIONAL NOTES FOR DRIVING PILES.

▲ FOR LOCATION OF ELEVATIONS BETWEEN BRIDGE SEAT BUILD-UPS, SEE SECTIONS A-A AND B-B SHEET 3 OF 3.

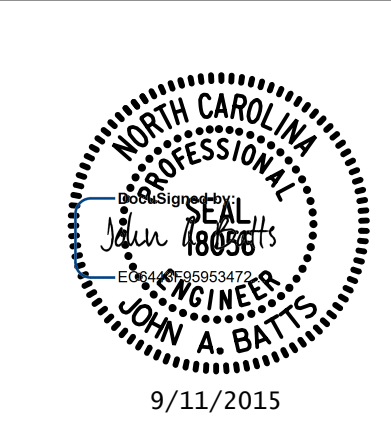


PROJECT NO. U-3109A
ALAMANCE COUNTY
STATION: 146+61.35 -L-

SHEET 1 OF 3

STATE OF NORTH CAROLINA DEPARTMENT OF TRANSPORTATION RALEIGH SUBSTRUCTURE					
END BENT 2 (SBL)					
REVISIONS					
NO.	BY:	DATE:	NO.	BY:	DATE:
1			3		
2			4		
SHEET NO. S02-45					TOTAL SHEETS S02-51

PLANS PREPARED BY:
S&EA
SIMPSON ENGINEERS ASSOCIATES
5640 Dillard Drive
Suite 200
Cary, NC 27518
(919) 852-0468
(919) 852-0598 (Fax)
www.simpsonengr.com
LICENSURE NO. C-2521



DRAWN BY: S.D. COOPER DATE: 9-15
CHECKED BY: J.A. BATTS DATE: 9-15
DESIGN ENGINEER OF RECORD: J.A. BATTS DATE: 9-15

STR. #2