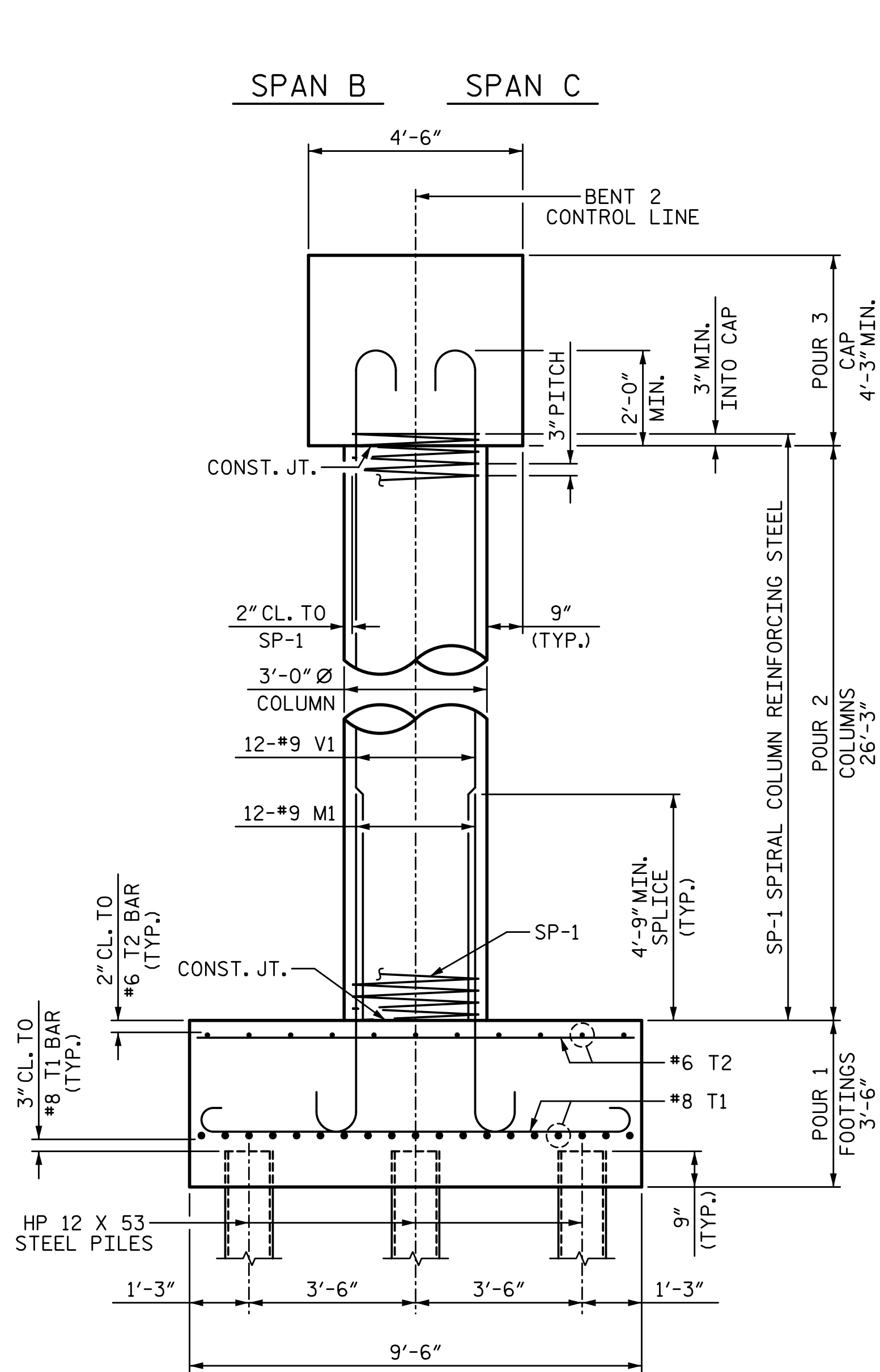
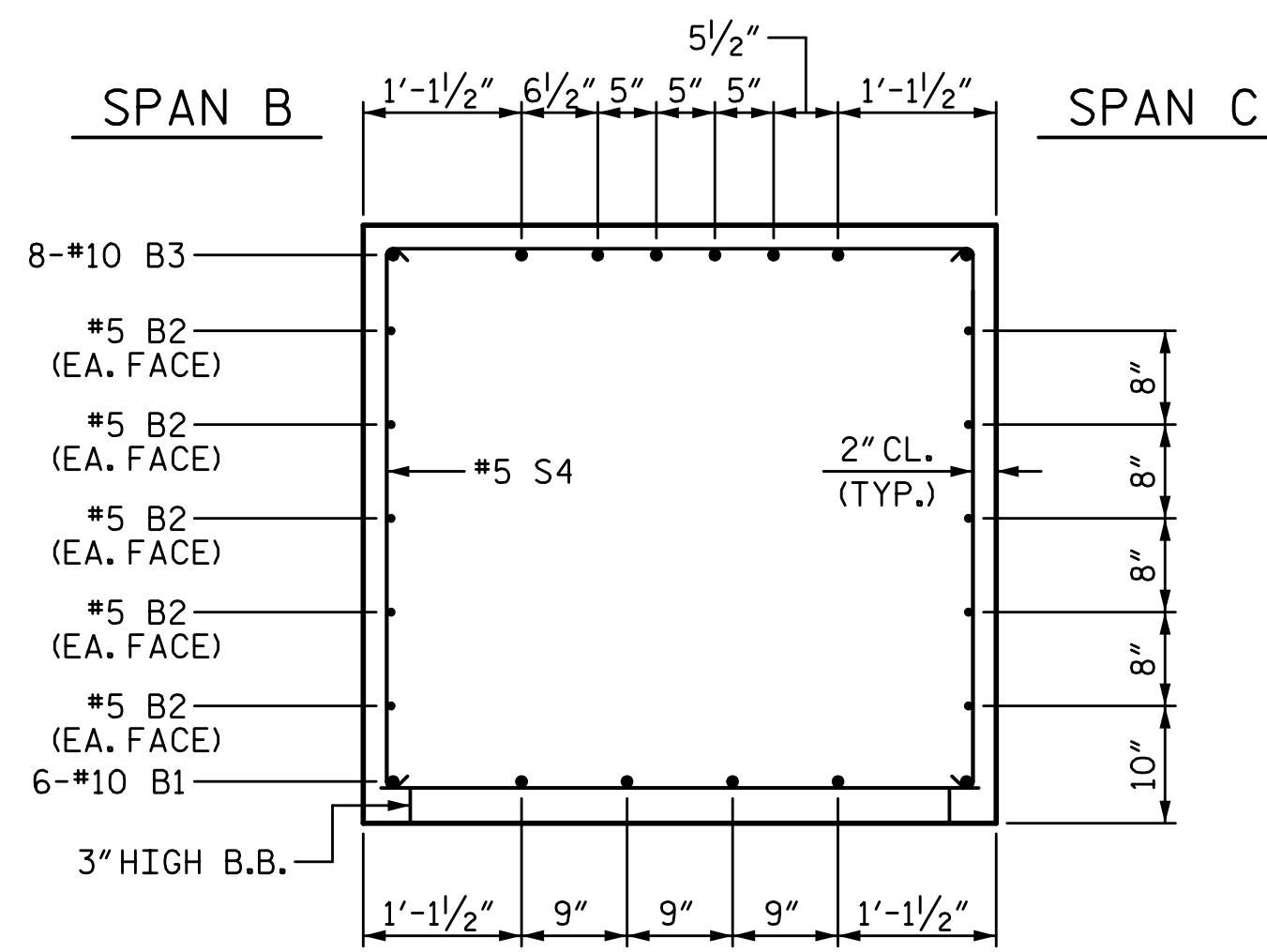


3/22/2017 8:30:08 AM G:\Projects\2014\U-3109A\Structures\Site 2\Site 2-Str 2 Bridge 436 (SBL)\Drawings\Final\402_U3109A_smu_bf2.dgn

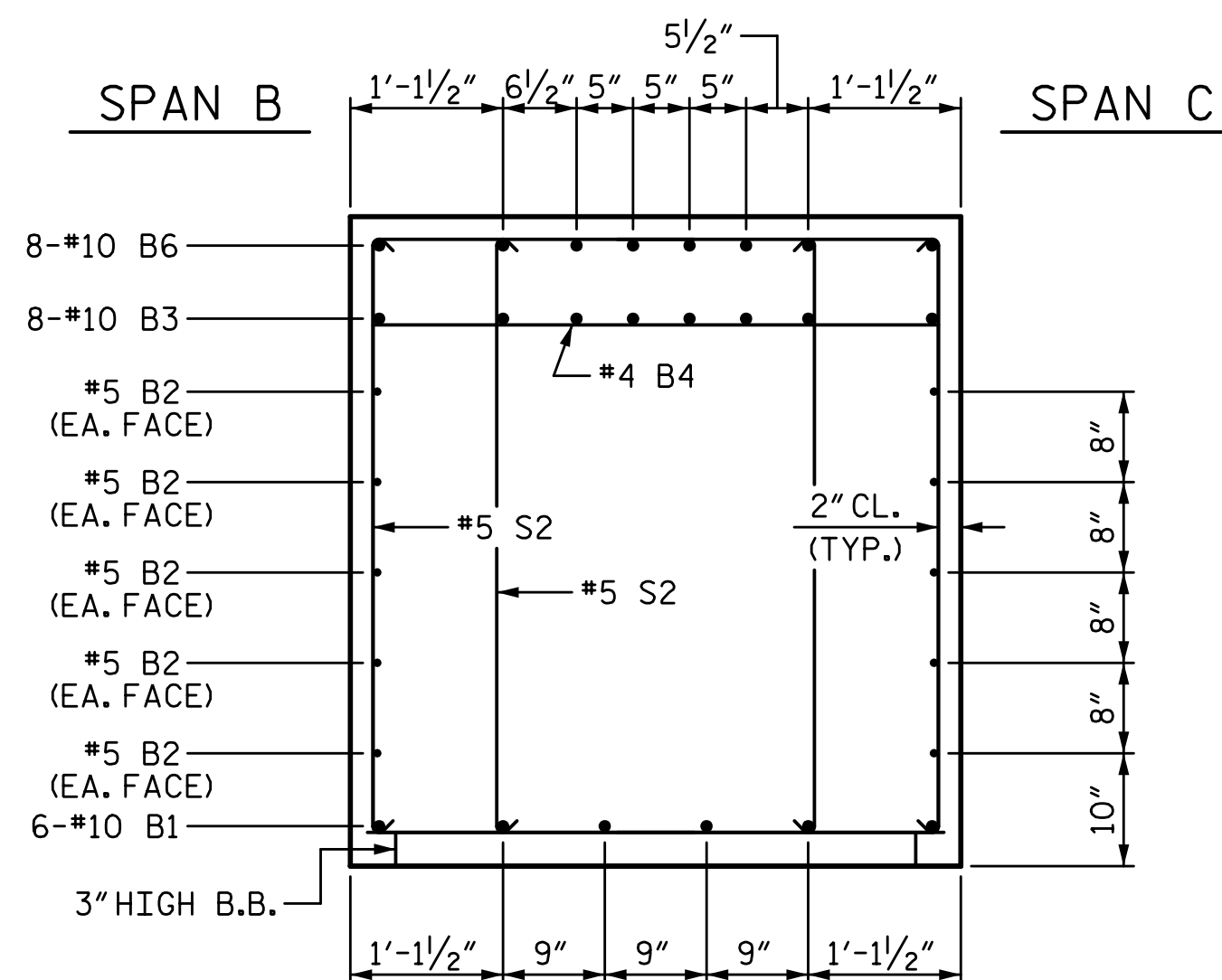


END ELEVATION

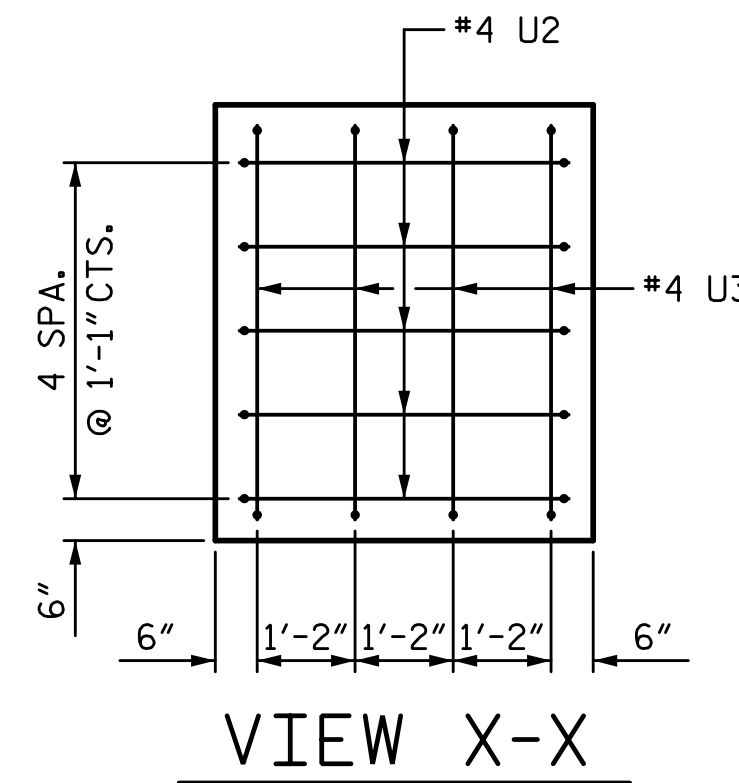
DETAILS, DIMENSIONS & REINFORCING STEEL ARE TYPICAL FOR EACH COLUMN AND FOOTING



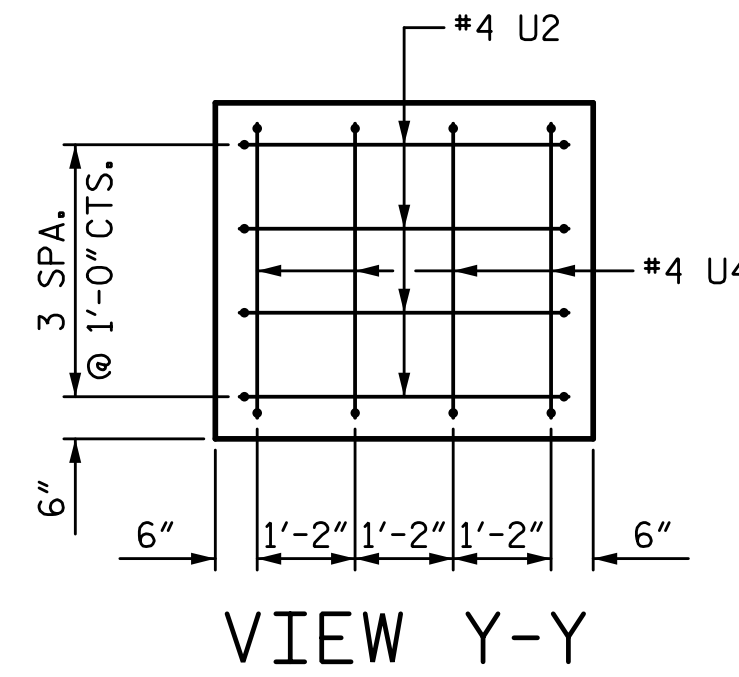
SECTION A-A



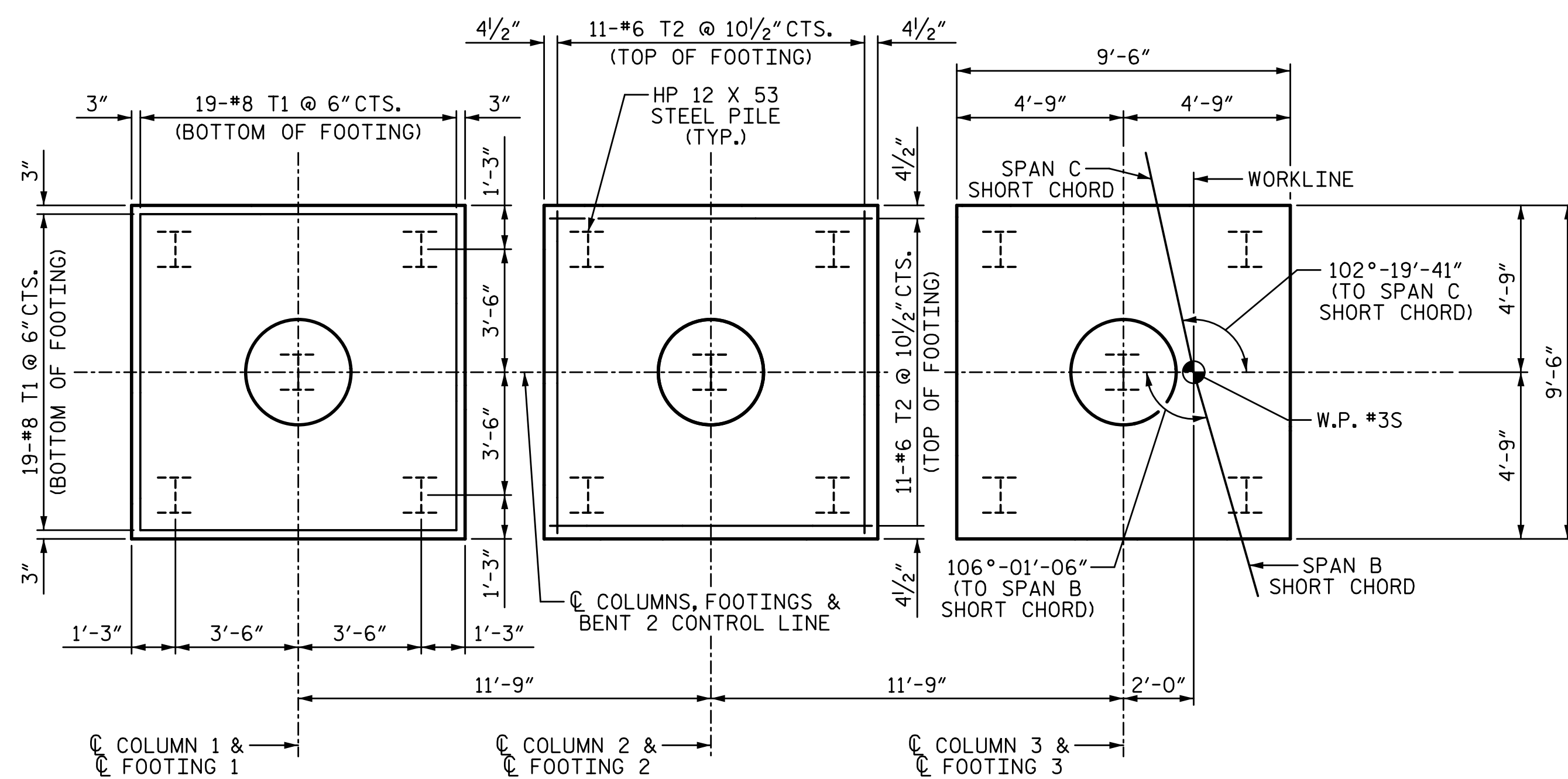
SECTION B-B



VIEW X-X

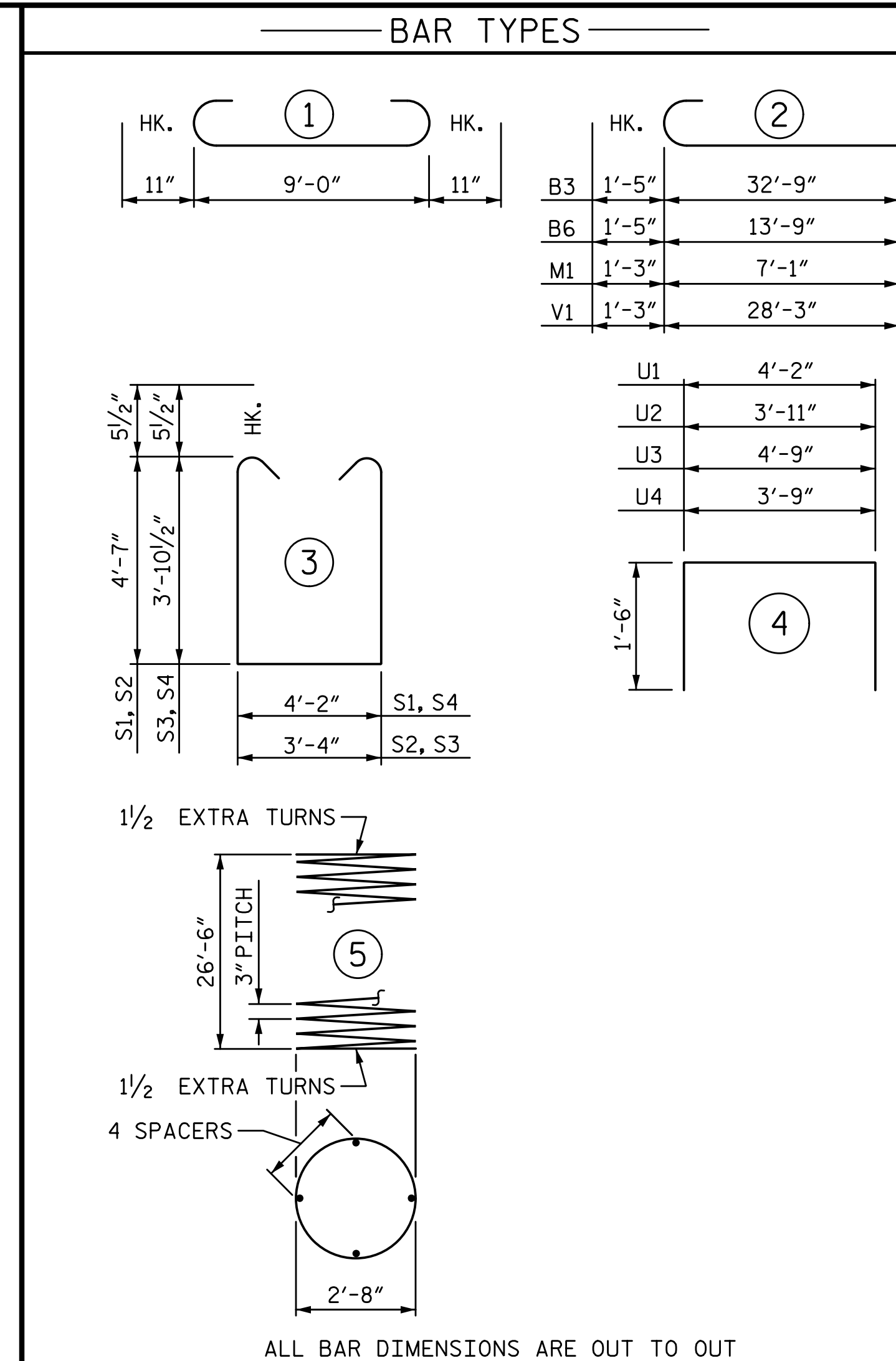


VIEW Y-Y

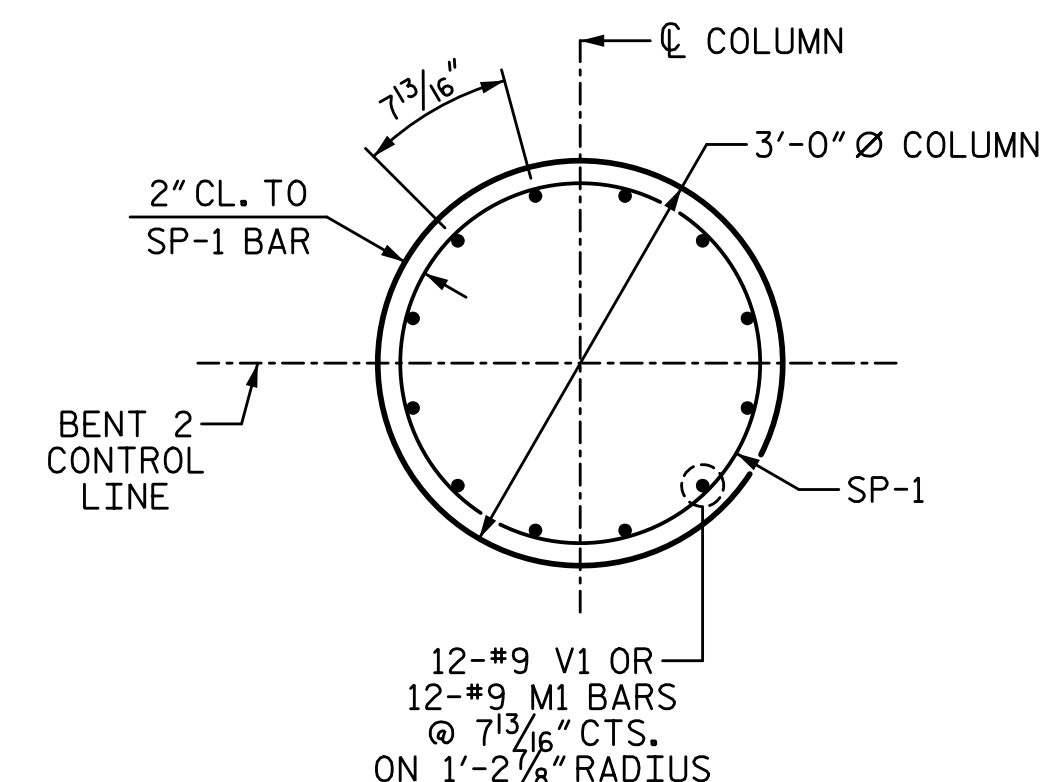


PLAN OF FOOTINGS

PILE PLACEMENT, DIMENSIONS AND REINFORCING STEEL ARE TYPICAL FOR EACH FOOTING



ALL BAR DIMENSIONS ARE OUT TO OUT



PLAN OF COLUMN

DIMENSIONS AND REINFORCING STEEL ARE TYPICAL FOR EACH COLUMN

BILL OF MATERIAL

BENT 2

BAR NO.	SIZE	TYPE	LENGTH	WEIGHT	
B1	6	10	STR	32'-10"	848
B2	10	5	STR	32'-10"	342
B3	8	10	2	34'-2"	1176
B4	4	4	STR	4'-2"	11
B5	8	4	STR	9'-3"	49
B6	8	10	2	15'-2"	522
B7	8	4	STR	4'-5"	24
M1	36	9	2	8'-4"	1020
S1	9	5	3	14'-3"	134
S2	24	5	3	13'-5"	336
S3	36	5	3	12'-0"	451
S4	9	5	3	12'-10"	120
T1	114	8	1	10'-10"	3297
T2	66	6	STR	9'-0"	892
U1	40	4	4	7'-2"	191
U2	9	4	4	6'-11"	42
U3	4	4	4	7'-9"	21
U4	4	4	4	6'-9"	18
V1	36	9	2	29'-6"	3611
SP-1	3	*	5	899'-4"	1802
REINFORCING STEEL				13105	LB
SPIRAL COL. REINF. STEEL				1802	LB
CLASS "A" CONCRETE BREAKDOWN					
POUR 1 (FOOTINGS)				35.1	CY
POUR 2 (COLUMNS)				20.7	CY
POUR 3 (CAP)				26.1	CY
TOTAL				81.9	CY
HP 12 X 53 STEEL PILES					
NO. 15				905	LF
PILE DRIVING EQUIPMENT SETUP FOR HP 12 X 53 STEEL PILES				15	EA

* THE "SP-1" SPIRAL REINFORCING STEEL SHALL BE W20 OR D-20 COLD DRAWN WIRE OR #4 PLAIN OR DEFORMED BAR.

PROJECT NO. U-3109A
ALAMANCE COUNTY
 STATION: 146+61.35 -L-

SHEET 2 OF 2

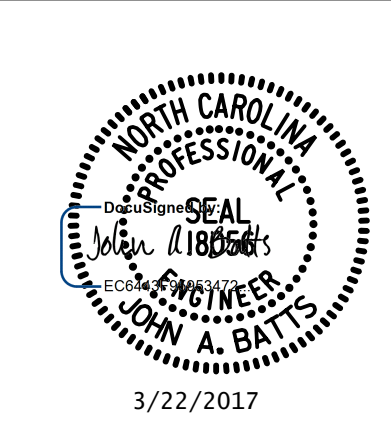
STATE OF NORTH CAROLINA
 DEPARTMENT OF TRANSPORTATION
 RALEIGH
 SUBSTRUCTURE

BENT 2
(SBL)

REVISIONS					
NO.	BY:	DATE:	NO.	BY:	DATE:
1			3		
2			4		

SHEET NO.
S02-42
TOTAL SHEETS
S02-51

PLANS PREPARED BY:
SIMPSON ENGINEERS & ASSOCIATES
 5640 Dillard Drive
 Suite 200
 Cary, NC 27518
 (919) 852-0468
 (919) 852-0598 (Fax)
 www.simpsonengr.com
 LICENSURE NO. C-2521



3/22/2017

STR. #2