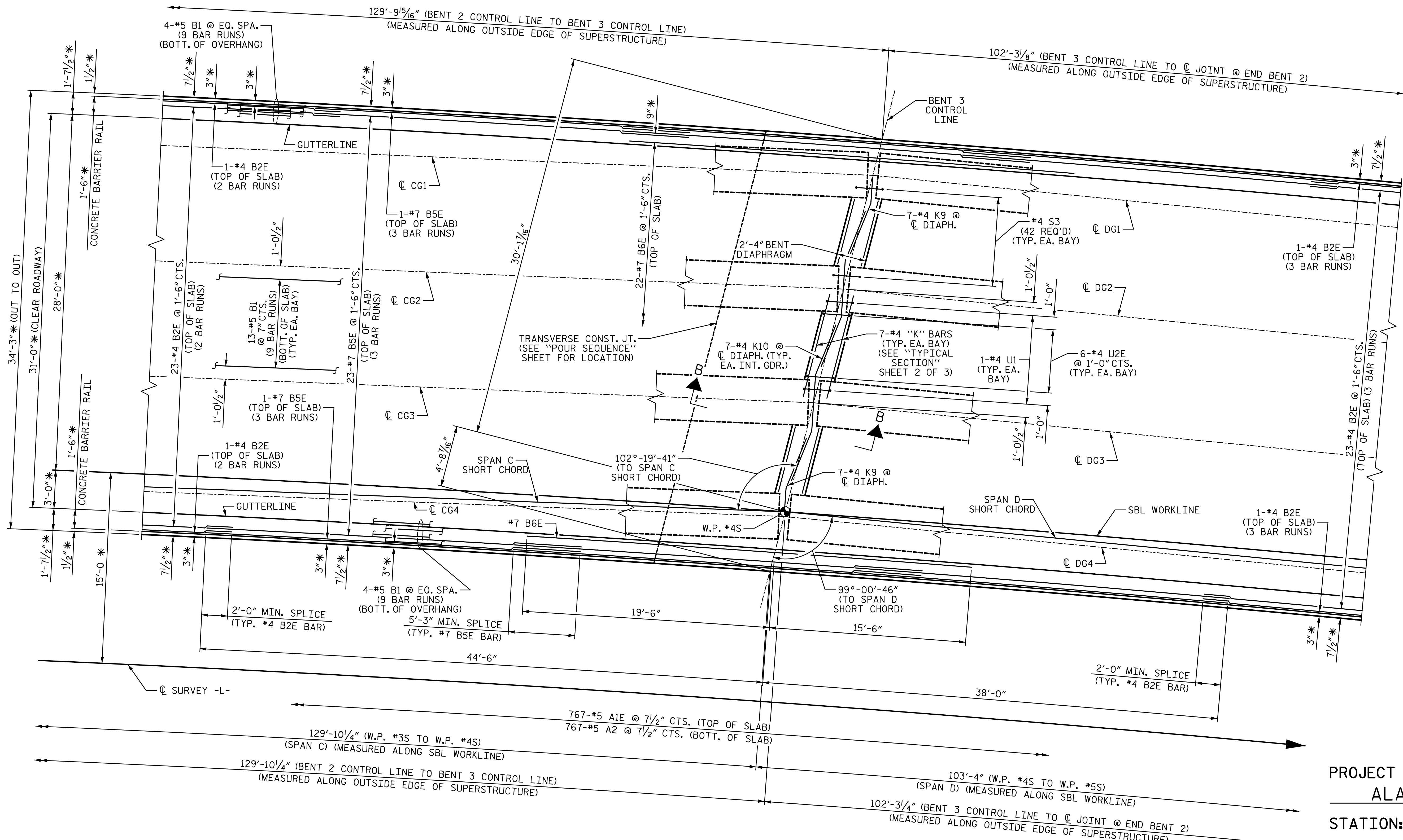


9/11/2015 10:16:42 AM G:\Projects\2014\U-3109A\Structures\Site 2\Site 2-Str 2 Bridge 436 (SBL)\Drawings\Final\402\_U3109A\_smu.ps.dgn



### PART PLAN - SPAN C AND SPAN D

\* RADIAL DIMENSION  
FOR NOTES, SEE SHEET 1 OF 5

PROJECT NO. U-3109A  
ALAMANCE COUNTY  
STATION: 146+61.35 -L-

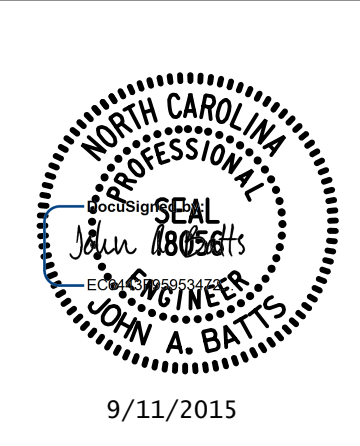
SHEET 4 OF 5

STATE OF NORTH CAROLINA  
DEPARTMENT OF TRANSPORTATION  
RALEIGH  
SUPERSTRUCTURE  
  
PLAN OF SPANS  
  
(SBL)

REVISIONS						SHEET NO.
NO.	BY:	DATE:	NO.	BY:	DATE:	
1			3			TOTAL SHEETS
2			4			S02-51

DRAWN BY: <u>T. BANKOVICH</u>	DATE: <u>9-15</u>
CHECKED BY: <u>J.A. BATTS</u>	DATE: <u>9-15</u>
DESIGN ENGINEER OF RECORD: <u>J.A. BATTS</u>	DATE: <u>9-15</u>

PLANS PREPARED BY:  
**SIMPSON**  
**ENGINEERS**  
**& ASSOCIATES**  
 5640 Dillard Drive  
 Suite 200  
 Cary, NC 27518  
 (919) 852-0468  
 (919) 852-0598 (Fax)  
 www.simpsonengr.com  
 LICENSURE NO. C-2521



STR. #2