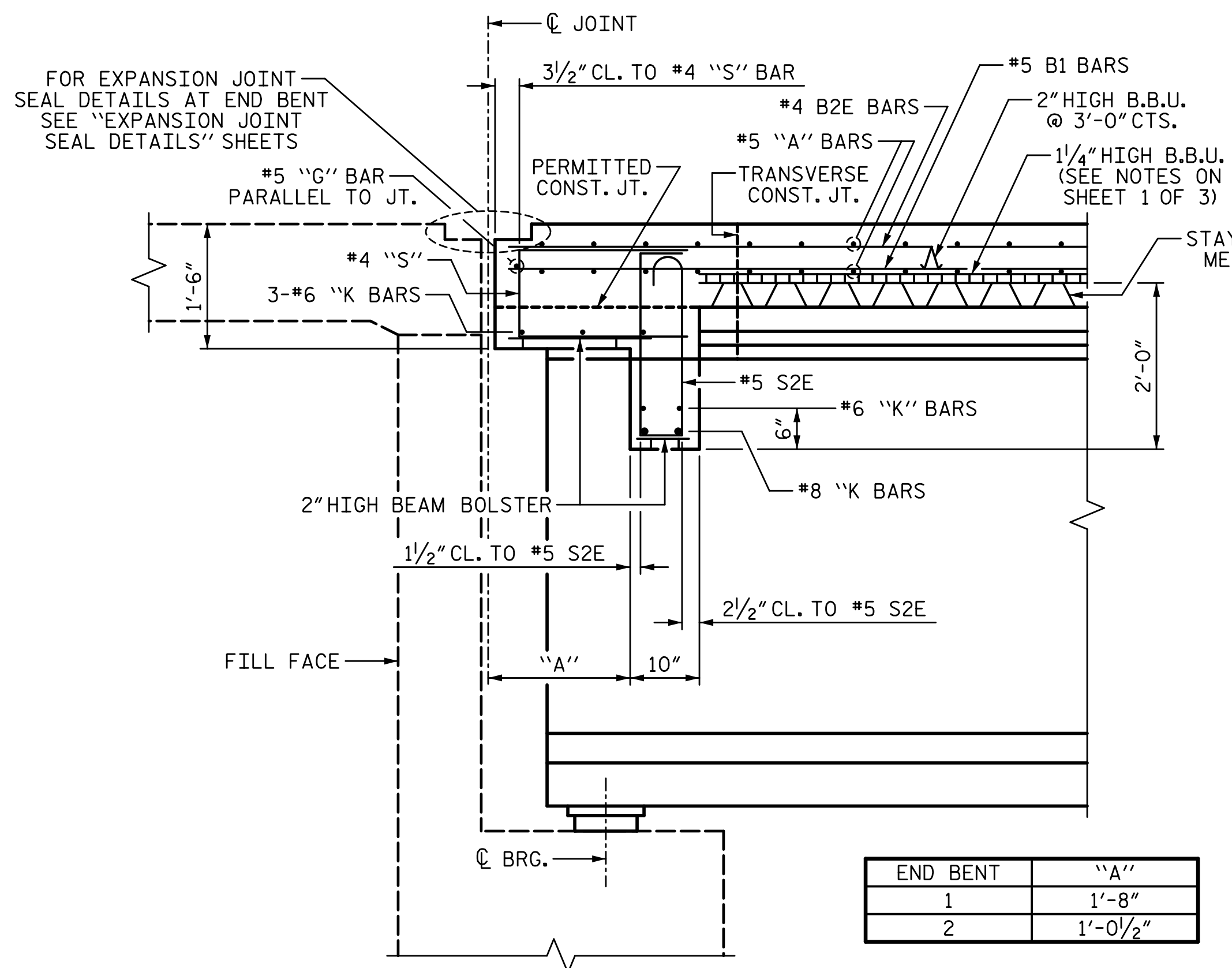
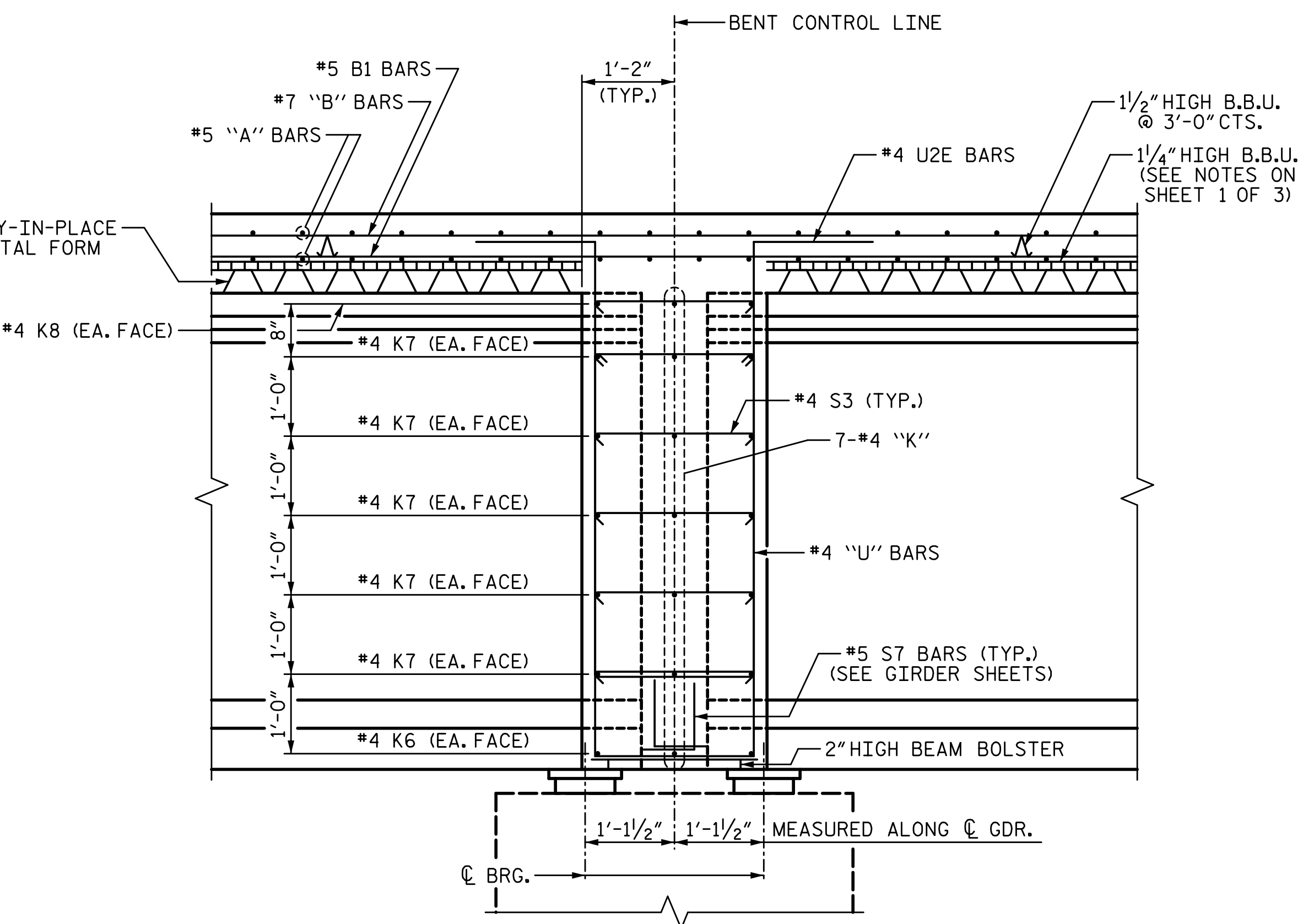


9/11/2015 10:16:41 AM G:\Projects\2014\U-3109A\Structures\Site 2\Site 2-Str 2 Bridge 436 (SBL)\Drawings\Final\402_U3109A_smu_ts.dgn



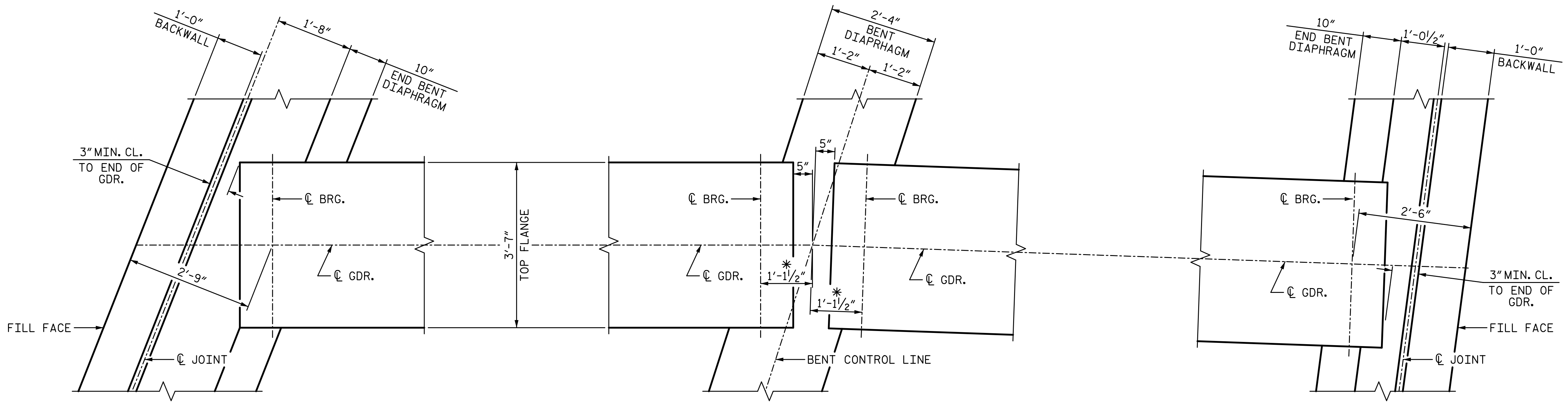
SECTION A-A



SECTION B-B

END BENT	"A"
1	1'-8"
2	1'-0 1/2"

NOTES:
 #5 "G" BAR MAY BE SHIFTED SLIGHTLY, AS NECESSARY, TO CLEAR REINFORCING STEEL AND STIRRUPS.



END BENT 1

BENT DIAPHRAGM
 (BENT 1 SHOWN, BENTS 2 & 3 SIMILAR)
 * MEASURED ALONG CL. GIRDER

END BENT 2

PLAN OF DIAPHRAGMS

PROJECT NO. U-3109A
ALAMANCE COUNTY
 STATION: 146+61.35 -L-

SHEET 3 OF 3

STATE OF NORTH CAROLINA
 DEPARTMENT OF TRANSPORTATION
 RALEIGH
 SUPERSTRUCTURE

TYPICAL SECTION
 (SBL)

DRAWN BY: T. BANKOVICH DATE: 9-15
 CHECKED BY: J.A. BATTS DATE: 9-15
 DESIGN ENGINEER OF RECORD: J.A. BATTS DATE: 9-15

PLANS PREPARED BY:
SIMPSON
ENGINEERS
& ASSOCIATES
 5640 Dillard Drive
 Suite 200
 Cary, NC 27518
 (919) 852-0468
 (919) 852-0598 (Fax)
 www.simpsonengr.com
 LICENSURE NO. C-2521



REVISIONS						SHEET NO. S02-10
NO.	BY:	DATE:	NO.	BY:	DATE:	
1			3			TOTAL SHEETS S02-51
2			4			

STR. #2