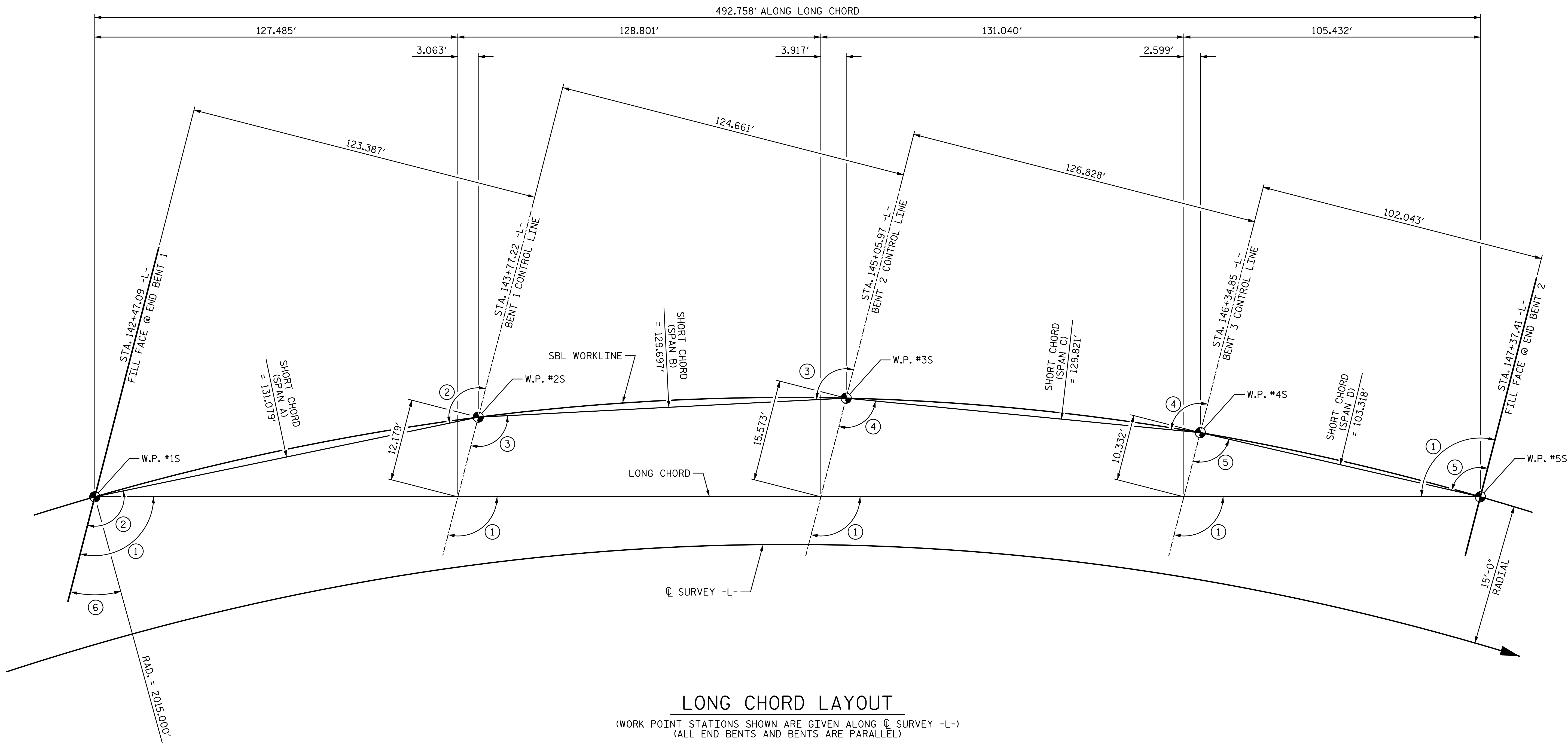


9/11/2015 10:16:39 AM G:\Projects\2014\U-3109A\Structures\Site 2\Site 2-Str 2 Bridge 436 (SBL)\Drawings\Final\402\_U3109A\_smu\_gd.dgn



### LONG CHORD LAYOUT

(WORK POINT STATIONS SHOWN ARE GIVEN ALONG C SURVEY -L-)  
(ALL END BENTS AND BENTS ARE PARALLEL)

#### ANGLES

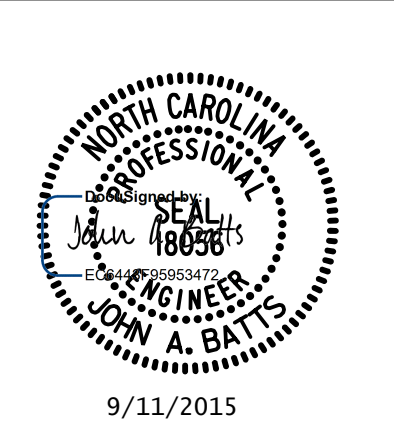
- ① 104°-34'-01" (TO LONG CHORD)
- ② 109°-43'-35" (TO SHORT CHORD - SPAN A)
- ③ 106°-01'-06" (TO SHORT CHORD - SPAN B)
- ④ 102°-19'-41" (TO SHORT CHORD - SPAN C)
- ⑤ 99°-00'-46" (TO SHORT CHORD - SPAN D)
- ⑥ 21°-35'-25"

PROJECT NO. U-3109A  
ALAMANCE COUNTY  
 STATION: 146+61.35 -L-  
22+02.76 -Y16-  
 SHEET 4 OF 6

STATE OF NORTH CAROLINA  
 DEPARTMENT OF TRANSPORTATION  
 RALEIGH  
**GENERAL DRAWING**  
 FOR SBL BRIDGE ON NC 119  
 OVER HOLT ST., NORFOLK SOUTHERN  
 RAILROAD (NSRR) AND US 70  
 BETWEEN SR 1972 AND SR 1921  
 (SBL)

DRAWN BY: T. BANKOVICH DATE: 9-15  
 CHECKED BY: J.A. BATTS DATE: 9-15  
 DESIGN ENGINEER OF RECORD: J.A. BATTS DATE: 9-15

PLANS PREPARED BY:  
**SIMPSON & ASSOCIATES**  
 ENGINEERS  
 5640 Dillard Drive  
 Suite 200  
 Cary, NC 27518  
 (919) 852-0468  
 (919) 852-0598 (Fax)  
 www.simpsonengr.com  
 LICENSURE NO. C-2521



REVISIONS						SHEET NO.
NO.	BY:	DATE:	NO.	BY:	DATE:	S02-4
1			3			TOTAL SHEETS
2			4			S02-51

STR. #2