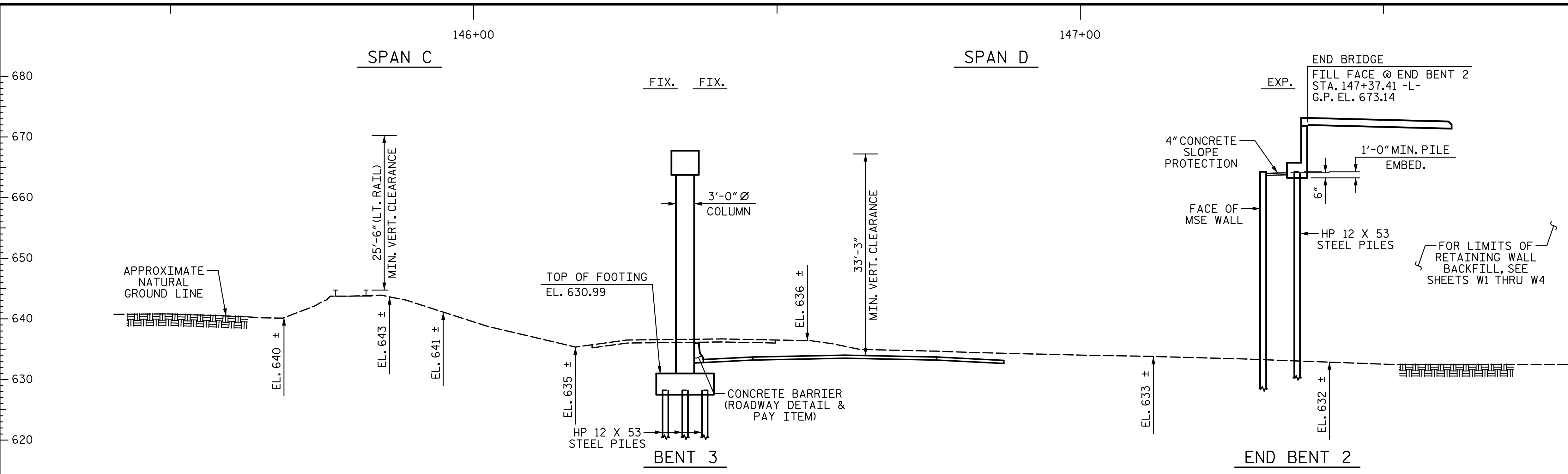


9/11/2015 10:16:39 AM G:\Projects\2014\U-3109A\Structures\Site 2\Site 2-Str 2 Bridge 436 (SBL)\Drawings\Final\402_U3109A-smu_qd.dgn

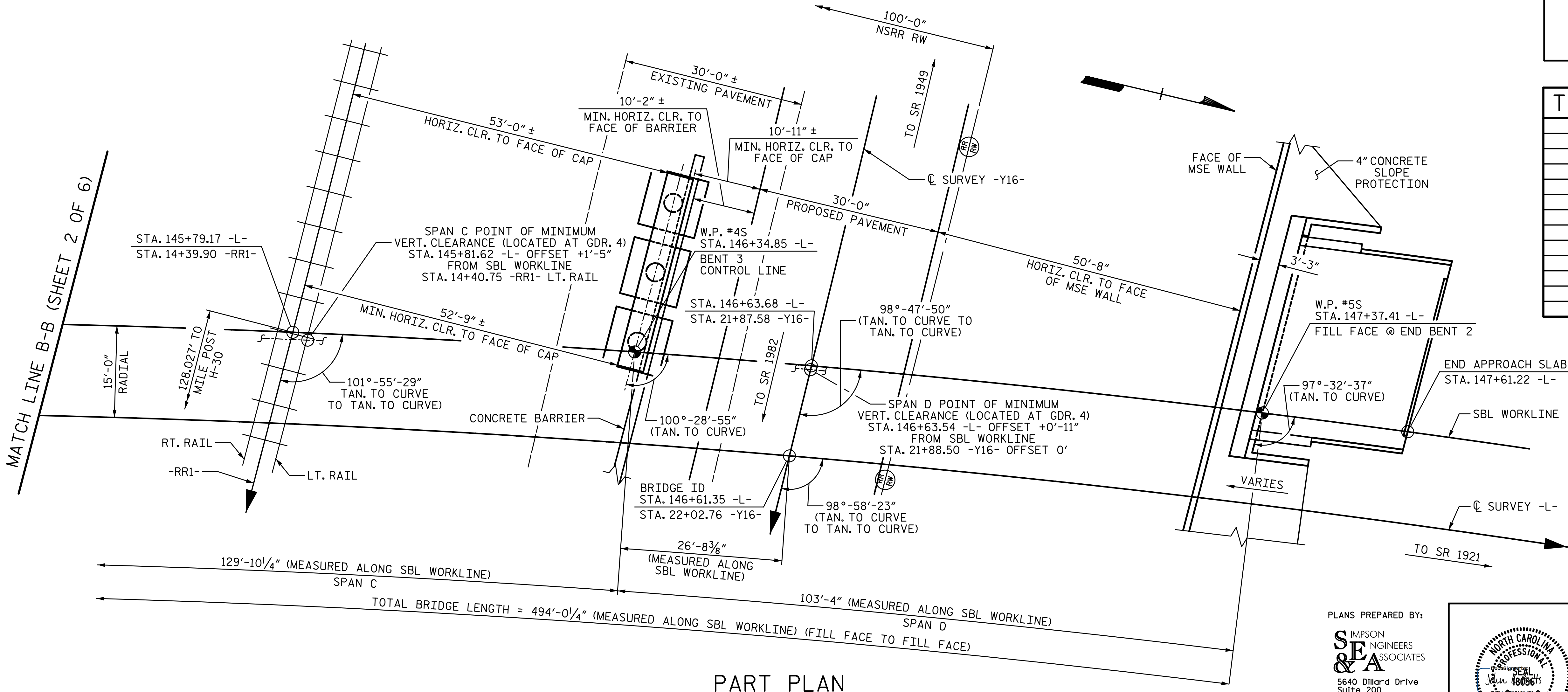


HORIZONTAL CURVE DATA -Y16-

PI STA. 20+70.99 -L-
 $\Delta = 6^\circ-03'-45.0"$ (RT.)
 $D = 0^\circ-42'-58.3"$
 $L = 846.48'$
 $T = 423.64'$
 $R = 8,000.00'$

TOP OF RAIL ELEVATIONS

STA. -RR1-	LT. RAIL	RT. RAIL
11+23.48	640.23	640.03
11+70.95	640.60	640.38
12+17.57	640.99	640.79
12+65.92	641.37	641.16
13+13.78	641.80	641.61
13+58.89	642.22	642.03
14+05.88	642.70	642.51
14+53.39	643.17	642.99
15+02.14	643.67	643.48
15+32.90	643.98	643.80
15+87.93	644.56	644.39
16+33.21	645.01	644.87

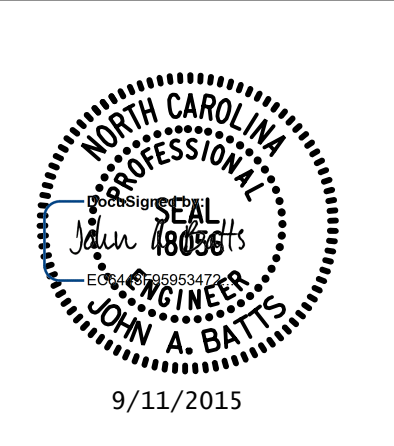


PROJECT NO. U-3109A
 ALAMANCE COUNTY
 STATION: 146+61.35 -L-
22+02.76 -Y16-
 SHEET 3 OF 6

STATE OF NORTH CAROLINA
 DEPARTMENT OF TRANSPORTATION
 RALEIGH
GENERAL DRAWING
 FOR SBL BRIDGE ON NC 119
 OVER HOLT ST., NORFOLK SOUTHERN
 RAILROAD (NSRR) AND US 70
 BETWEEN SR 1972 AND SR 1921
 (SBL)

DRAWN BY: T. BANKOVICH DATE: 9-15
 CHECKED BY: J.A. BATTS DATE: 9-15
 DESIGN ENGINEER OF RECORD: J.A. BATTS DATE: 9-15

PLANS PREPARED BY:
SIMPSON ENGINEERS & ASSOCIATES
 5640 Dillard Drive
 Suite 200
 Cary, NC 27518
 (919) 852-0468
 (919) 852-0598 (Fax)
 www.simpsonengr.com
 LICENSURE NO. C-2521



REVISIONS						SHEET NO. S02-3
NO.	BY:	DATE:	NO.	BY:	DATE:	
1			3			TOTAL SHEETS S02-51
2			4			

STR. #2