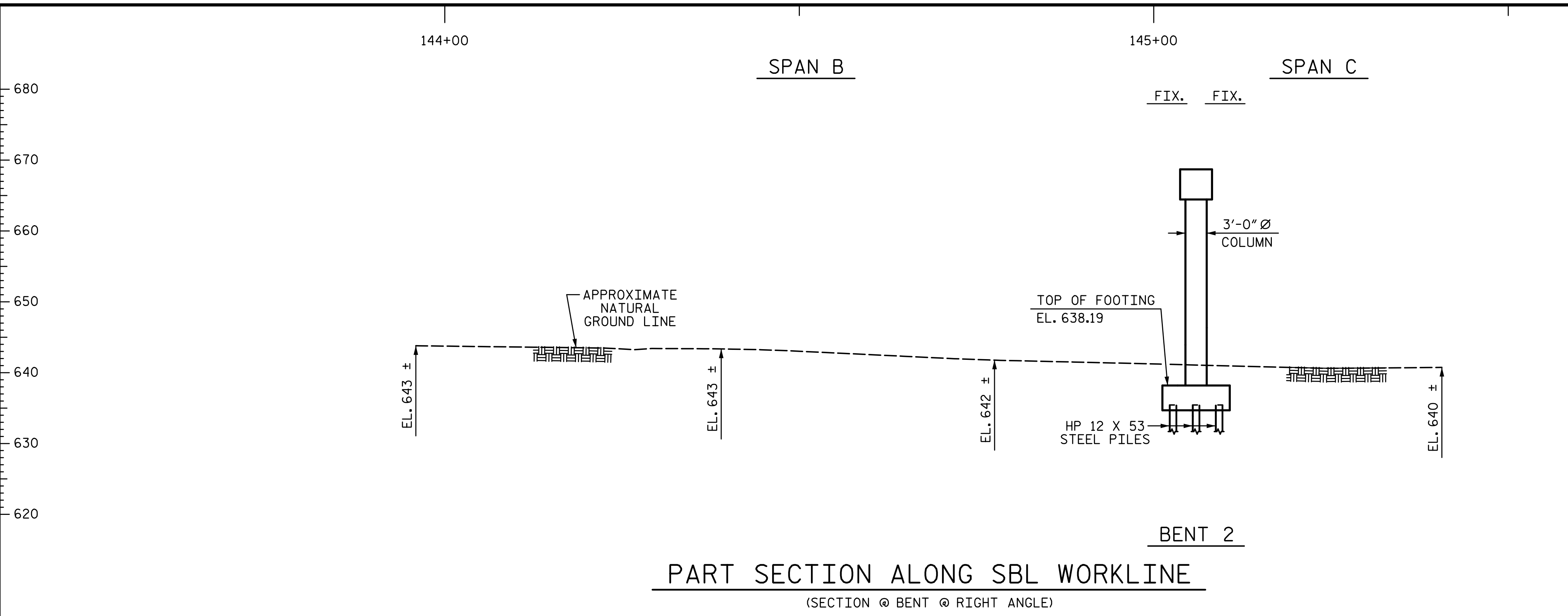
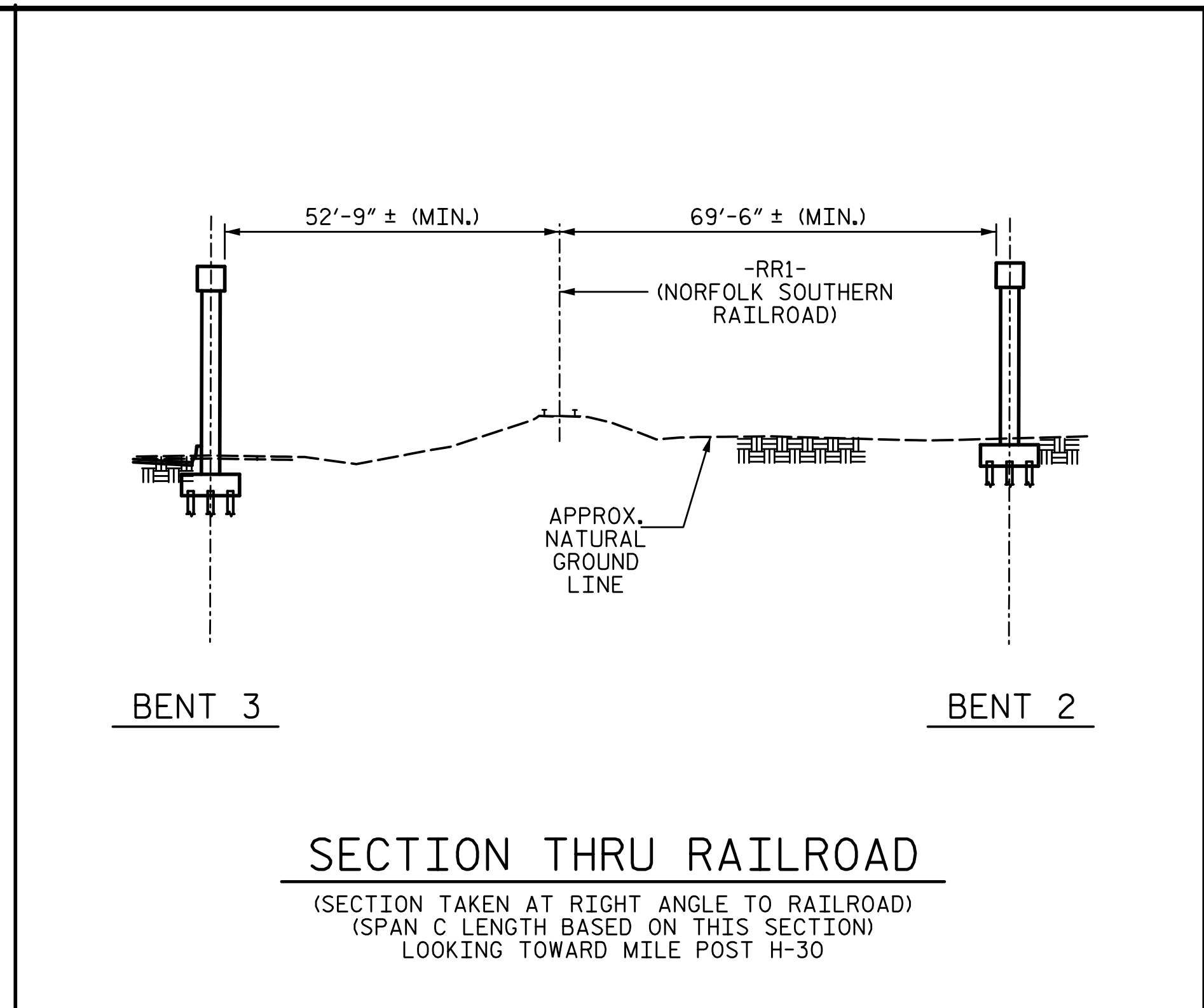


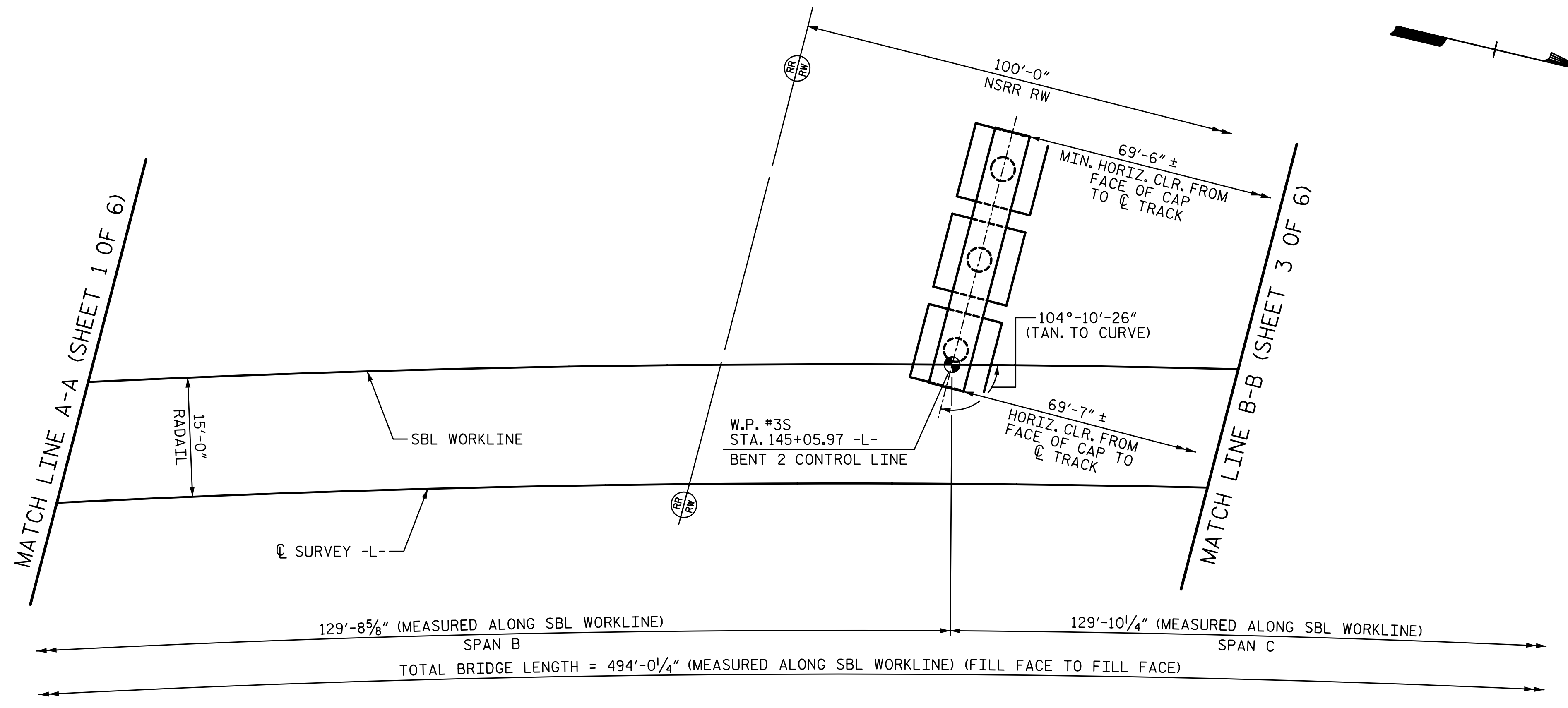
9/11/2015 10:16:39 AM G:\Projects\2014\U-3109A\Structures\Site 2\Site 2-Str 2 Bridge 436 (SBL)\Drawings\Final\402\_U3109A\_smu.qd.dgn



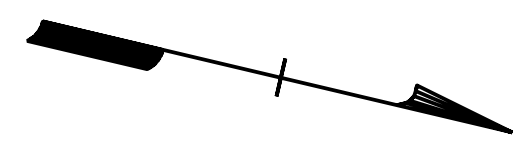
**PART SECTION ALONG SBL WORKLINE**  
(SECTION @ BENT @ RIGHT ANGLE)



**SECTION THRU RAILROAD**  
(SECTION TAKEN AT RIGHT ANGLE TO RAILROAD)  
(SPAN C LENGTH BASED ON THIS SECTION)  
LOOKING TOWARD MILE POST H-30



**PART PLAN**  
(PILES NOT SHOWN IN PLAN VIEW)



DRAWN BY: T. BANKOVICH	DATE: 9-15
CHECKED BY: J.A. BATTS	DATE: 9-15
DESIGN ENGINEER OF RECORD: J.A. BATTS	DATE: 9-15

PLANS PREPARED BY:  
**SIMPSON ENGINEERS & ASSOCIATES**  
5640 Dillard Drive  
Suite 200  
Cary, NC 27518  
(919) 852-0468  
(919) 852-0598 (Fax)  
www.simpsonengr.com  
LICENSURE NO. C-2521



PROJECT NO. U-3109A  
ALAMANCE COUNTY  
STATION: 146+61.35 -L-  
22+02.76 -Y16-  
SHEET 2 OF 6

STATE OF NORTH CAROLINA DEPARTMENT OF TRANSPORTATION RALEIGH					
GENERAL DRAWING					
FOR SBL BRIDGE ON NC 119 OVER HOLT ST., NORFOLK SOUTHERN RAILROAD (NSRR) AND US 70 BETWEEN SR 1972 AND SR 1921 (SBL)					
REVISIONS					
NO.	BY:	DATE:	NO.	BY:	DATE:
1			3		
2			4		
					SHEET NO. S02-2
					TOTAL SHEETS S02-51

STR. #2