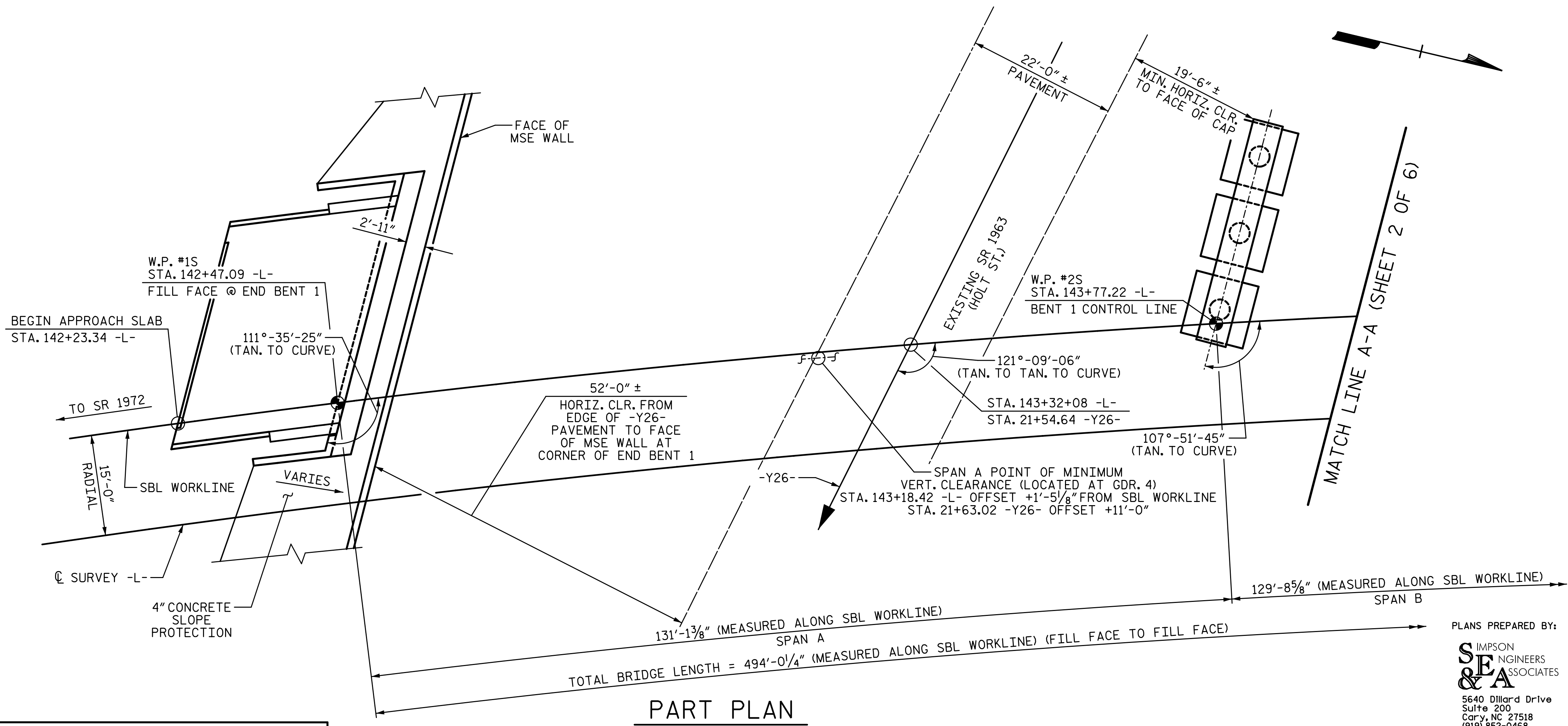


PART SECTION ALONG SBL WORKLINE
(SECTIONS @ END BENT AND BENT @ RIGHT ANGLES)

GRADE DATA -L-

(+)5.1600%	(-)5.2000%
PVI STA. 145+00.00	
EL. = 689.41	
VC = 1035'	

2/10/2017 9:57:01 AM G:\Projects\2014\U-3109A\Structures\Site 2\Site 2-Str 2 Bridge 436 (SBL)\Drawings\Final\402_U3109A_smu_qd.dgn



PART PLAN
(PILES NOT SHOWN IN PLAN VIEW)

HORIZONTAL CURVE DATA -L-

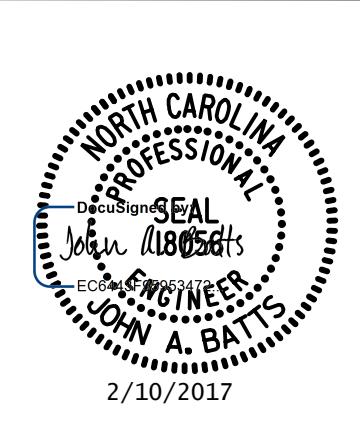
PIs 141+33.32 -L-
$\theta_s = 2^\circ-51'-53.2''$
Ls = 200.00'
LT = 133.35'
ST = 66.68'
PI STA. 156+58.38 -L-
$\Delta = 72^\circ-11'-58.8''$ (RT.)
D = 2°-51'-53.2"
L = 2,520.24'
T = 1,458.42'
R = 2,000.00'

PROJECT NO. U-3109A
ALAMANCE COUNTY
 STATION: 146+61.35 -L-
22+02.76 -Y16-
 SHEET 1 OF 6 BRIDGE #436
 MILE POST H-30

STATE OF NORTH CAROLINA
 DEPARTMENT OF TRANSPORTATION
 RALEIGH
GENERAL DRAWING
 FOR SBL BRIDGE ON NC 119
 OVER HOLT ST., NORFOLK SOUTHERN
 RAILROAD (NSRR) AND US 70
 BETWEEN SR 1972 AND SR 1921
 (SBL)

DRAWN BY: T. BANKOVICH DATE: 9-15
 CHECKED BY: J.A. BATTS DATE: 9-15
 DESIGN ENGINEER OF RECORD: J.A. BATTS DATE: 9-15

PLANS PREPARED BY:
SIMPSON
ENGINEERS
& ASSOCIATES
 5640 Dillard Drive
 Suite 200
 Cary, NC 27518
 (919) 852-0468
 (919) 852-0598 (Fax)
 www.simpsonengr.com
 LICENSURE NO. C-2521



REVISIONS				SHEET NO.	
NO.	BY:	DATE:	NO.	BY:	DATE:
1			3		
2			4		

TOTAL SHEETS: S02-51

STR. #2