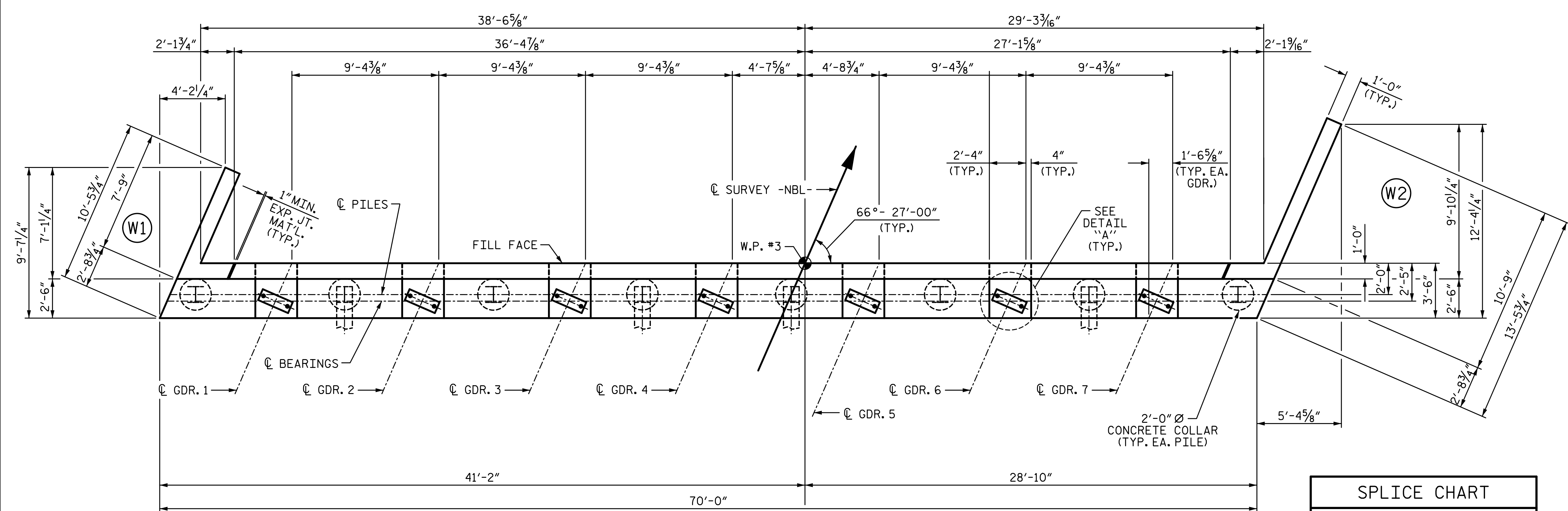
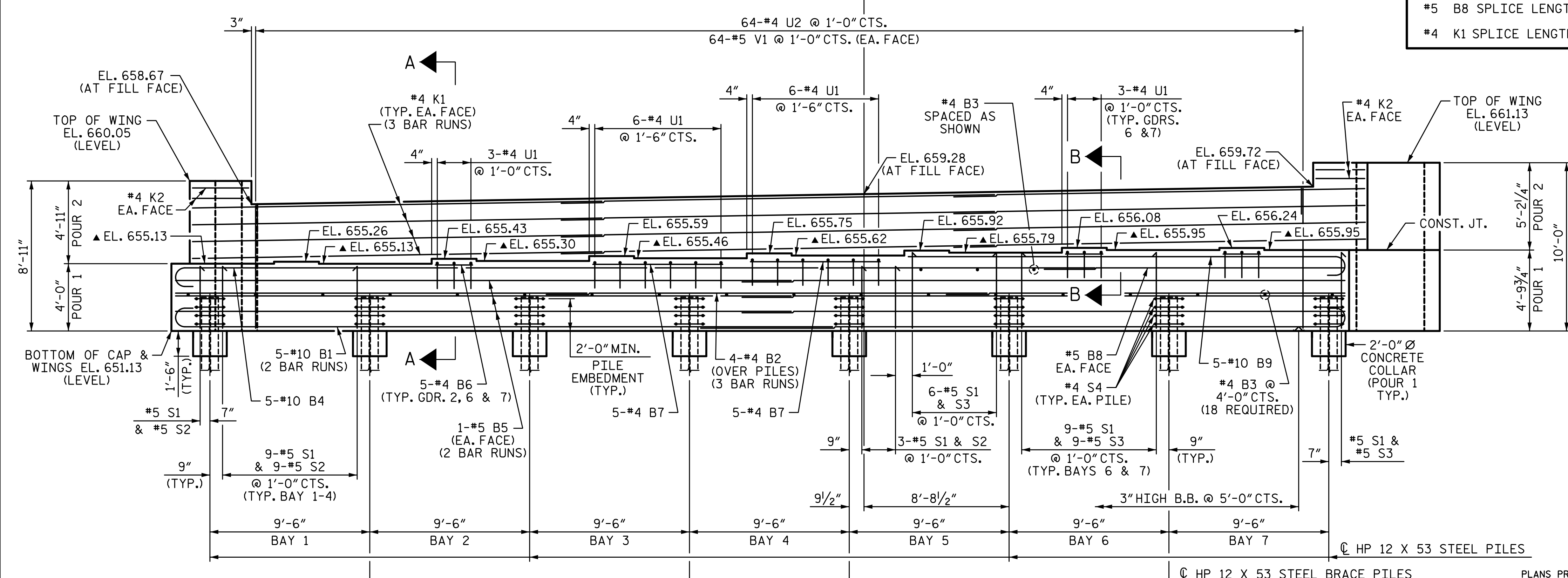


2/10/2017 9:09:09 AM G:\Projects\2014\U-3109A\Structures\Site 1-Bridge 434 (NBL)\Drawings\Final\401_U3109A_SMU_EB2.dgn



PLAN



ELEVATION

▲ FOR LOCATION OF ELEVATIONS BETWEEN BRIDGE SEAT BUILD-UPS, SEE SECTION A-A ON SHEET 3 OF 3.

SPlice CHART	
#10 B1	SPLICE LENGTH = 7'-11"
#4 B2	SPLICE LENGTH = 2'-5"
#10 B4	SPLICE LENGTH = 13'-0"
#5 B5	SPLICE LENGTH = 3'-0"
#5 B8	SPLICE LENGTH = 3'-0"
#4 K1	SPLICE LENGTH = 2'-5"

NOTES:

STIRRUPS AND "U" BARS IN CAP MAY BE SHIFTED AS NECESSARY TO CLEAR ANCHOR BOLTS.

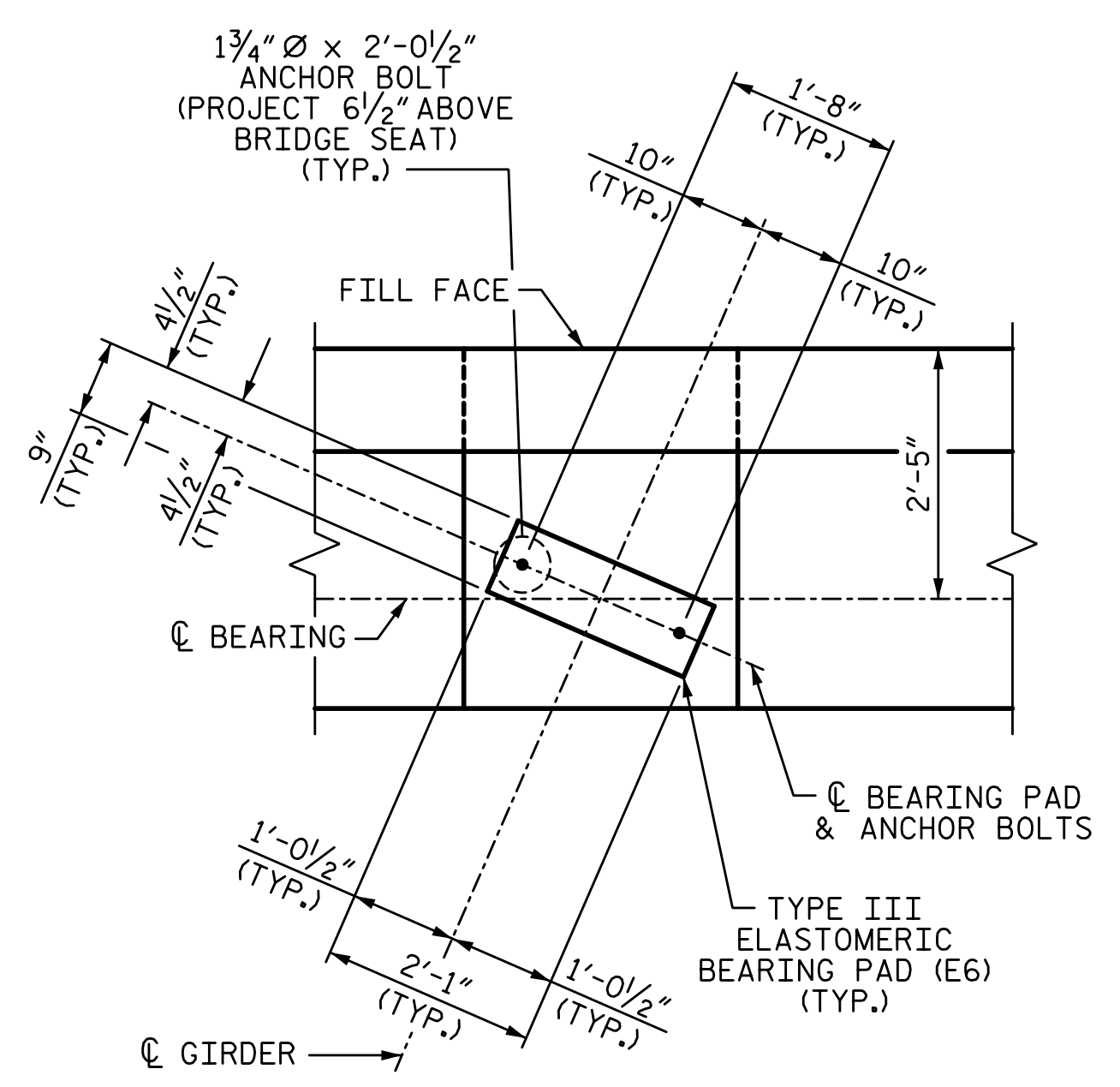
BACKWALL SHALL BE PLACED BEFORE APPLYING THE EPOXY PROTECTIVE COATING.

THE TOP SURFACE AREAS OF THE END BENT CAPS SHALL BE CURED IN ACCORDANCE WITH THE STANDARD SPECIFICATIONS EXCEPT THE MEMBRANE CURING COMPOUND METHOD SHALL NOT BE USED.

THE TOP SURFACE OF THE CAP EXCEPT THE BRIDGE SEAT BUILDUPS SHALL BE SLOPED TRANSVERSELY FROM THE FILL FACE TO THE BACK FACE AT THE RATE OF 2%.

SEE GENERAL DRAWING "FOUNDATION LAYOUT" FOR ADDITIONAL NOTES FOR DRIVING PILES.

THE CONTRACTOR SHALL PROVIDE FOR INSTALLATION OF THE 4" DIAMETER DRAIN PIPE THROUGH THE WING WALL AS REQUIRED FOR REINFORCED BRIDGE APPROACH FILLS, SEE THE ROADWAY PLANS. REINFORCING STEEL IN THE WING WALL MAY BE SHIFTED AS NECESSARY TO CLEAR THE DRAIN PIPE.



DETAIL "A"
TYP. EA. GIRDER

PROJECT NO. U-3109A
ALAMANCE COUNTY
 STATION: 26+54.73 -NBL-

SHEET 1 OF 3

STATE OF NORTH CAROLINA
 DEPARTMENT OF TRANSPORTATION
 RALEIGH
 SUBSTRUCTURE

END BENT 2

REVISIONS					
NO.	BY:	DATE:	NO.	BY:	DATE:
1			3		
2			4		

SHEET NO.
S01-39
TOTAL SHEETS
S01-49

DRAWN BY: S. D. COOPER DATE: 5-15
 CHECKED BY: B.S. COX DATE: 5-15
 DESIGN ENGINEER OF RECORD: T.J. BEACH DATE: 5-15

PLANS PREPARED BY:
SIMPSON & ASSOCIATES
 5640 Dillard Drive
 Suite 200
 Cary, NC 27518
 (919) 852-0468
 (919) 852-0598 (Fax)
 www.simpsonengr.com
 LICENSURE NO. C-2521

