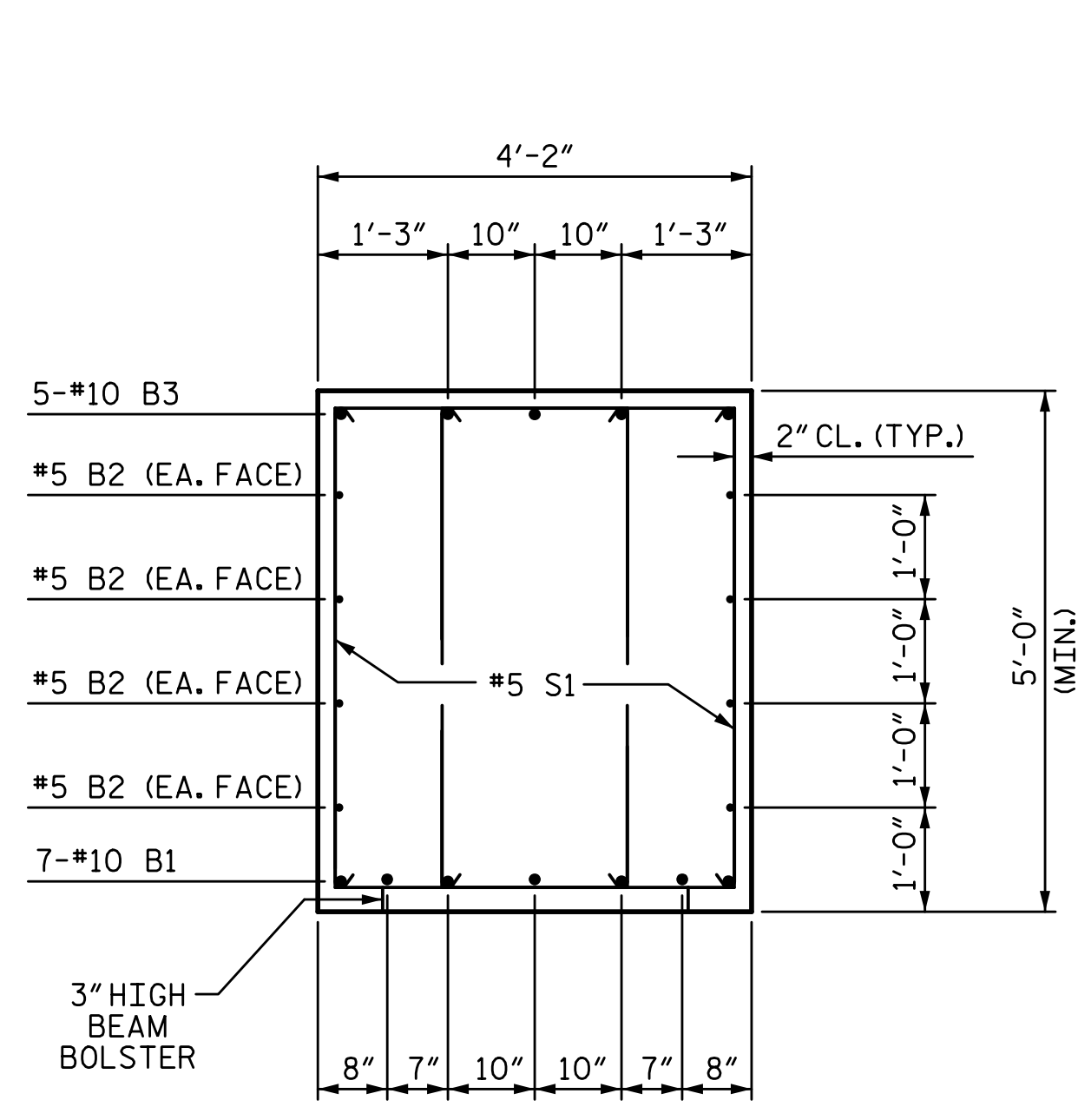
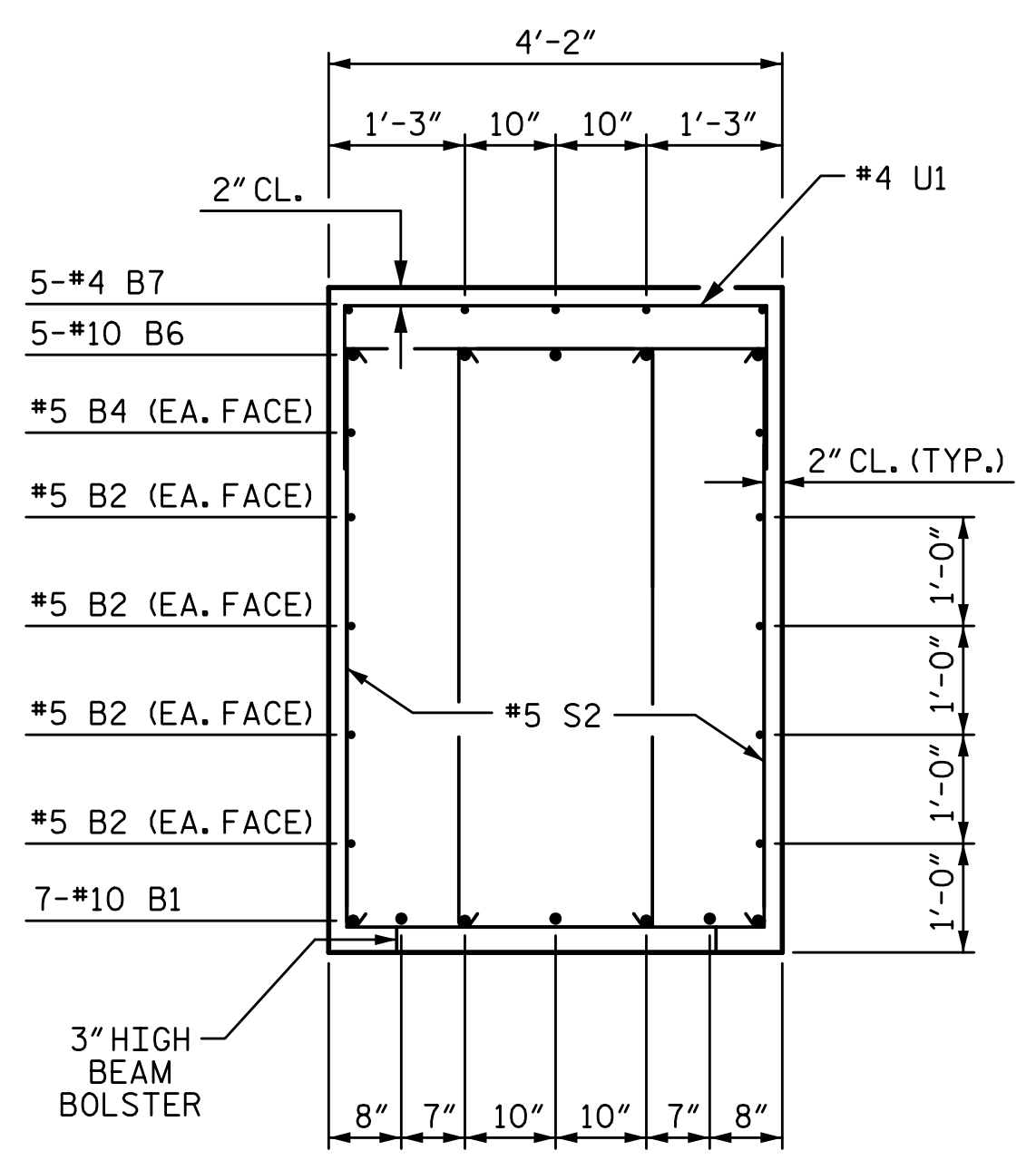


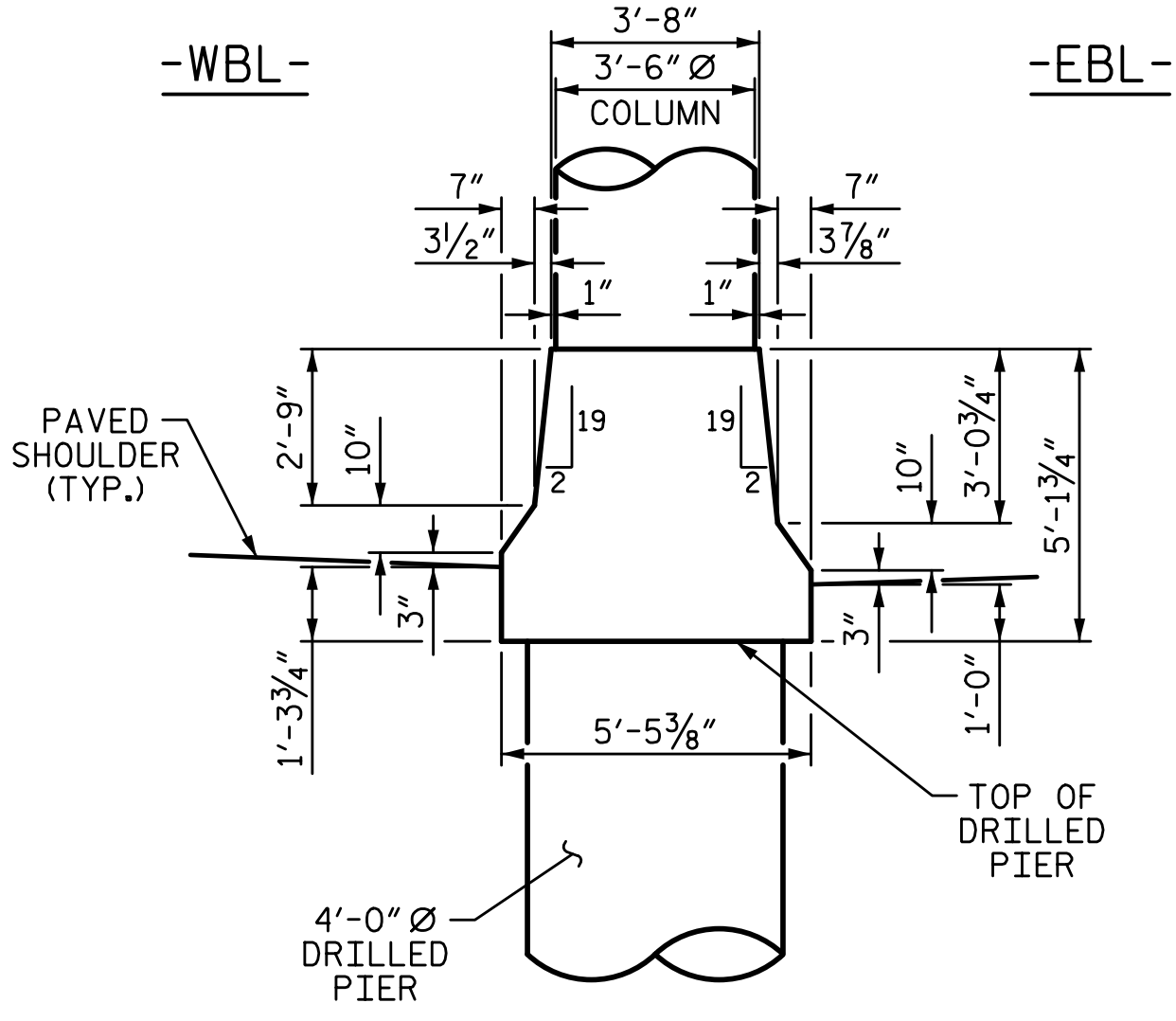
2/10/2017 9:09:08 AM G:\Projects\2014\U-3109A\Structures\Site 1-Bridge 434 (NBL)\Drawings\Final\401_U3109A_SMU_BT1.dgn



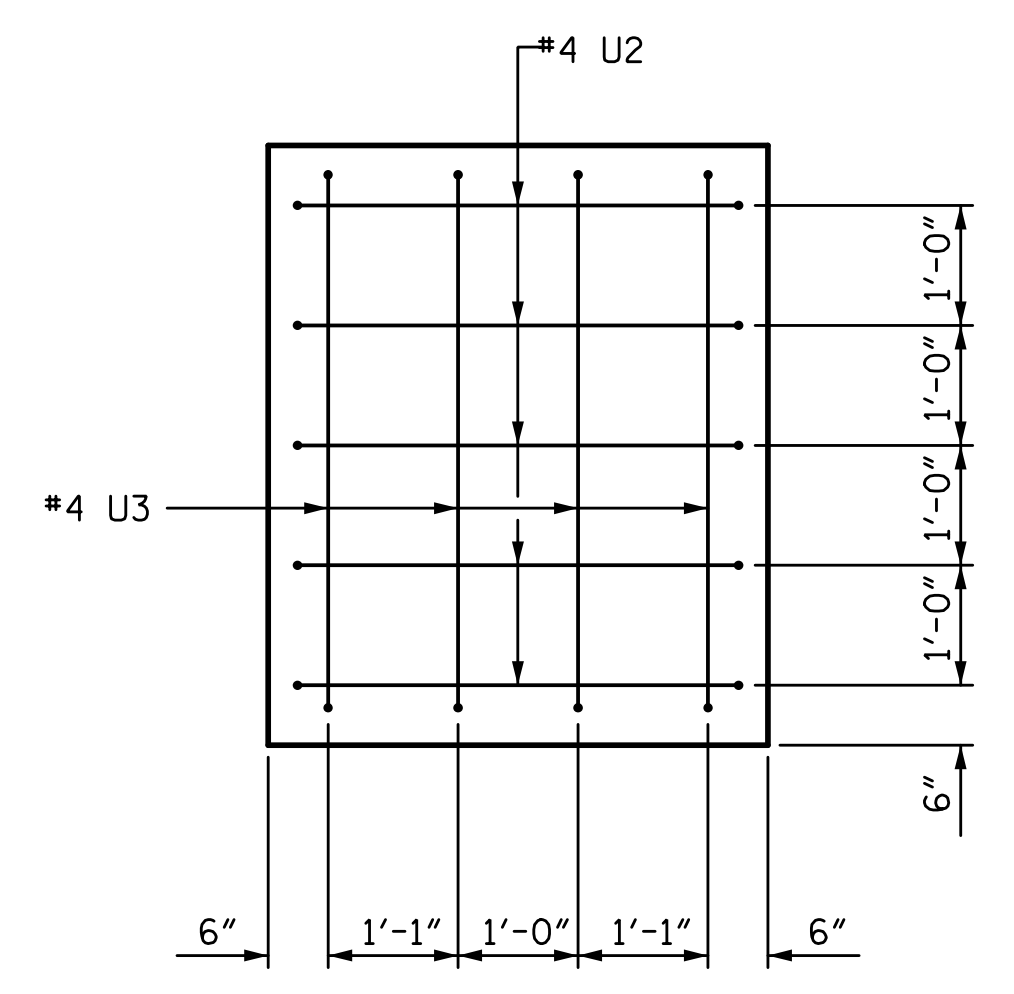
SECTION A-A



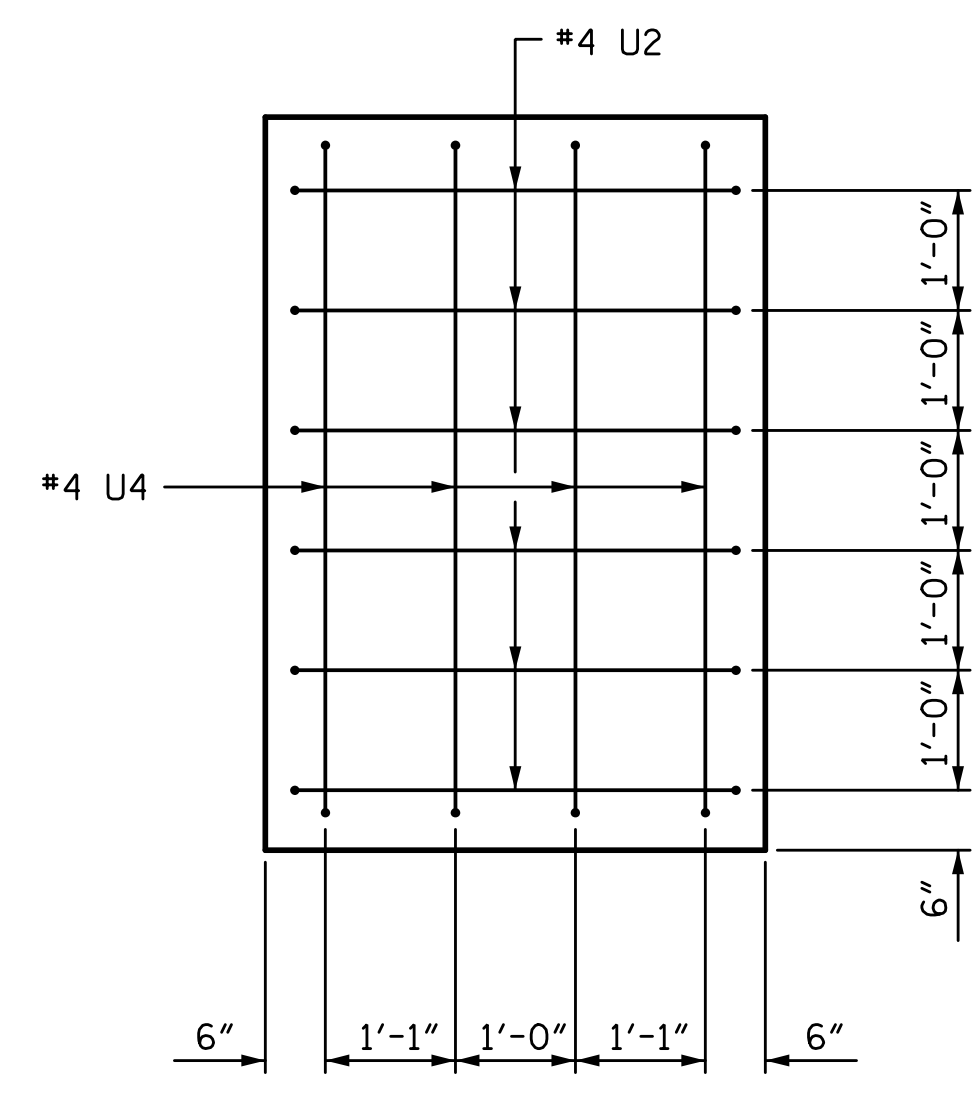
SECTION B-B



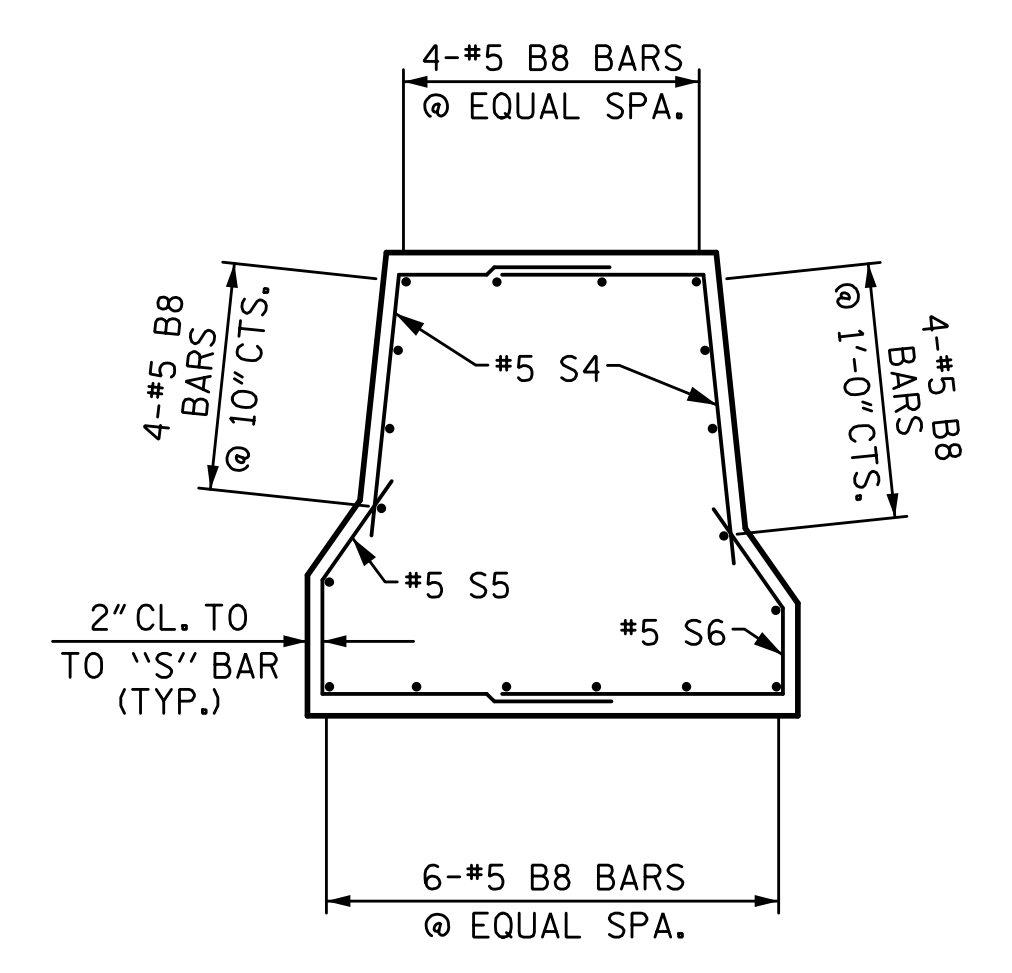
MEDIAN BARRIER
LOOKING EASTBOUND



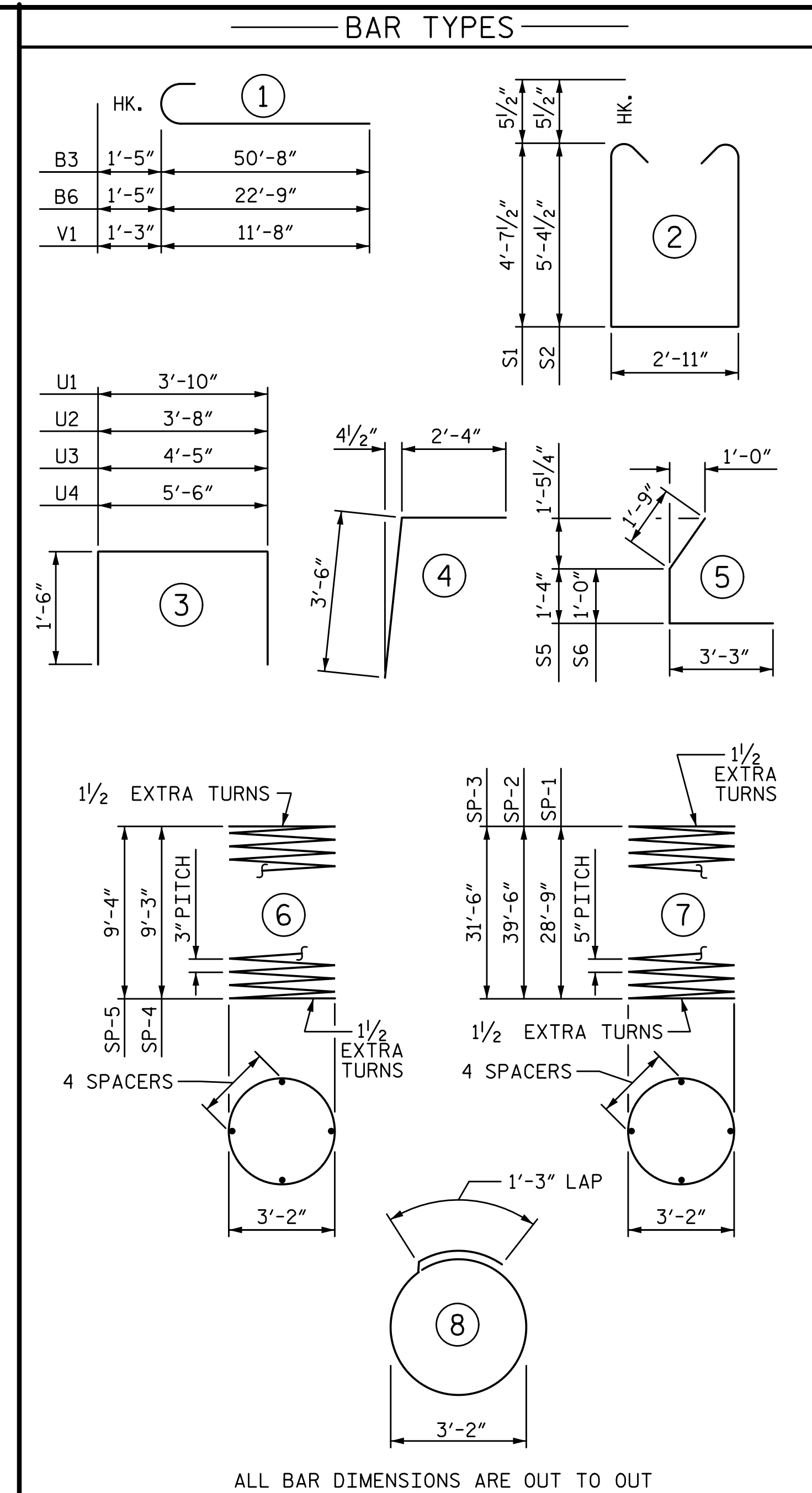
VIEW X-X



VIEW Y-Y

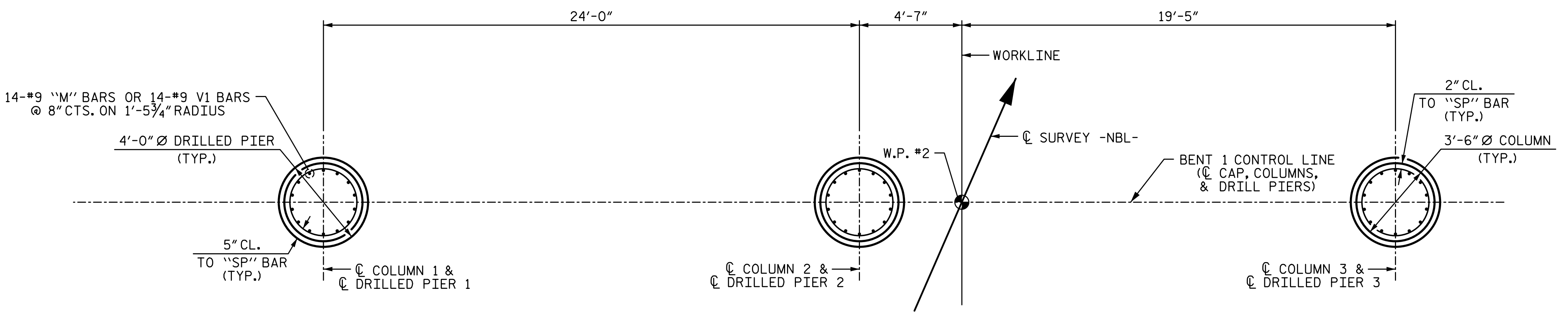


MEDIAN BARRIER



* THE "SP-1", "SP-2" & "SP-3" SPIRAL REINFORCING STEEL SHALL BE W31 OR D-31 COLD DRAWN WIRE OR #5 PLAIN OR DEFORMED BAR.
 ** THE "SP-4" & "SP-5" SPIRAL REINFORCING STEEL SHALL BE W20 OR D-20 COLD DRAWN WIRE OR #4 PLAIN OR DEFORMED BAR.

BILL OF MATERIAL					
BENT 1					
BAR NO.	SIZE	TYPE	LENGTH	WEIGHT	
B1	14	10	STR	34'-2"	2058
B2	16	5	STR	31'-9"	530
B3	5	10	1	52'-1"	1121
B4	2	5	STR	12'-10"	27
B5	5	4	STR	18'-4"	61
B6	5	10	1	24'-2"	520
B7	5	4	STR	4'-2"	14
B8	36	5	STR	27'-2"	1020
B9	3	4	STR	3'-10"	8
M1	14	9	STR	41'-8"	1983
M2	14	9	STR	52'-5"	2495
M3	14	9	STR	44'-5"	2114
S1	78	5	2	13'-1"	1064
S2	54	5	2	14'-7"	821
S3	60	4	8	11'-2"	448
S4	104	5	4	5'-10"	633
S5	52	5	5	6'-4"	343
S6	52	5	5	6'-0"	325
U1	62	4	3	6'-10"	283
U2	11	4	3	6'-8"	49
U3	4	4	3	7'-5"	20
U4	4	4	3	8'-6"	23
V1	42	9	1	12'-11"	1845
SP-1	1	*	7	705'-2"	735
SP-2	1	*	7	959'-10"	1001
SP-3	1	*	7	773'-9"	807
SP-4	2	**	6	392'-10"	525
SP-5	1	**	6	402'-8"	269
REINFORCING STEEL				17805	LB
SPIRAL COL. REINF. STEEL				3337	LB
CLASS "A" CONCRETE BREAKDOWN					
POUR 2 (MEDIAN BARRIER)				44.4	CY
POUR 3 (COLUMNS)				9.6	CY
POUR 4 (CAP)				51.8	CY
TOTAL				105.8	CY
DRILLED PIERS:					
DRILLED PIER CONCRETE					
POUR 1 (DRILLED PIERS)				47.2	CY
4'-0" Ø DRILLED PIER NOT IN SOIL				31.0	LF
4'-0" Ø DRILLED PIER IN SOIL				70.3	LF
CSL TUBES				423	LF

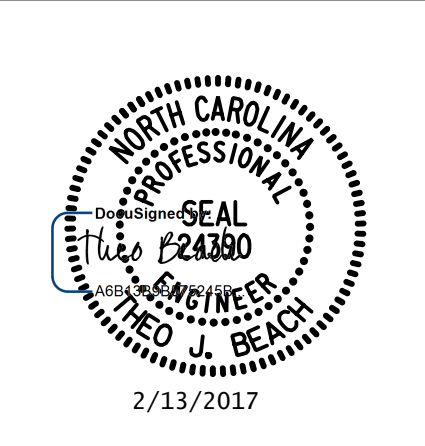


PLAN OF DRILLED PIERS & COLUMNS

(DIMENSIONS AND REINFORCING STEEL SHOWN ARE TYPICAL FOR EACH COLUMN AND DRILLED PIER)
 (MEDIAN BARRIER NOT SHOWN FOR CLARITY)

DRAWN BY: S. D. COOPER DATE: 5-15
 CHECKED BY: B.S. COX DATE: 5-15
 DESIGN ENGINEER OF RECORD: T.J. BEACH DATE: 5-15

PLANS PREPARED BY:
SIMPSON ENGINEERS & ASSOCIATES
 5640 Dillard Drive
 Suite 200
 Cary, NC 27518
 (919) 852-0468
 (919) 852-0598 (Fax)
 www.simpsonengr.com
 LICENSURE NO. C-2521



PROJECT NO. U-3109A
ALAMANCE COUNTY
 STATION: 26+54.73 -NBL-

SHEET 2 OF 2

STATE OF NORTH CAROLINA DEPARTMENT OF TRANSPORTATION RALEIGH SUBSTRUCTURE					
BENT 1					
REVISIONS					
NO.	BY:	DATE:	NO.	BY:	DATE:
1			3		
2			4		

SHEET NO. S01-38
 TOTAL SHEETS S01-49