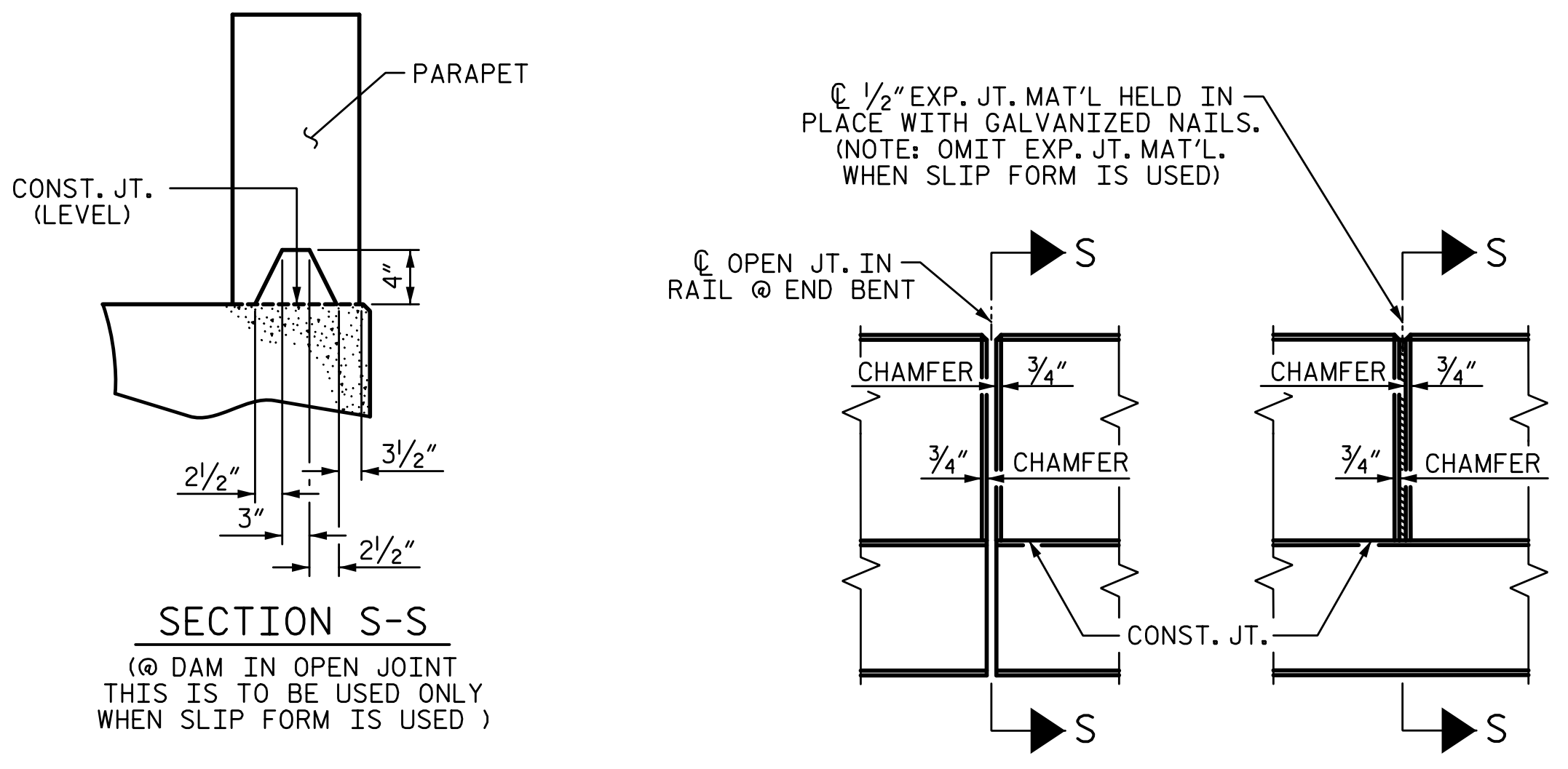


2/10/2017 9:09:04 AM G:\Projects\2014\U-3109A\Structures\Site 1-Bridge 434 (NBL)\Drawings\Final\401_U3109A_SML_BR.dgn



ELEVATION AT EXPANSION JOINTS

NOTES:

THE PARAPET IN A CONTINUOUS UNIT SHALL NOT BE CAST UNTIL ALL SLAB CONCRETE IN THE UNIT HAS BEEN CAST AND HAS REACHED A MINIMUM COMPRESSIVE STRENGTH OF 3,000 PSI.

ALL REINFORCING STEEL IN PARAPET AND END POSTS SHALL BE EPOXY COATED.

THE #5 S4E AND #5 S5E BARS MAY BE SHIFTED SLIGHTLY IN ORDER TO MAINTAIN A 2" MINIMUM CLEARANCE TO THE 1/2" EXPANSION JT. MATERIAL IN PARAPET.

FOR DETAILS OF CONCRETE INSERTS IN END POSTS, SEE "RAIL POST SPACINGS AND END OF RAIL DETAILS" SHEET.

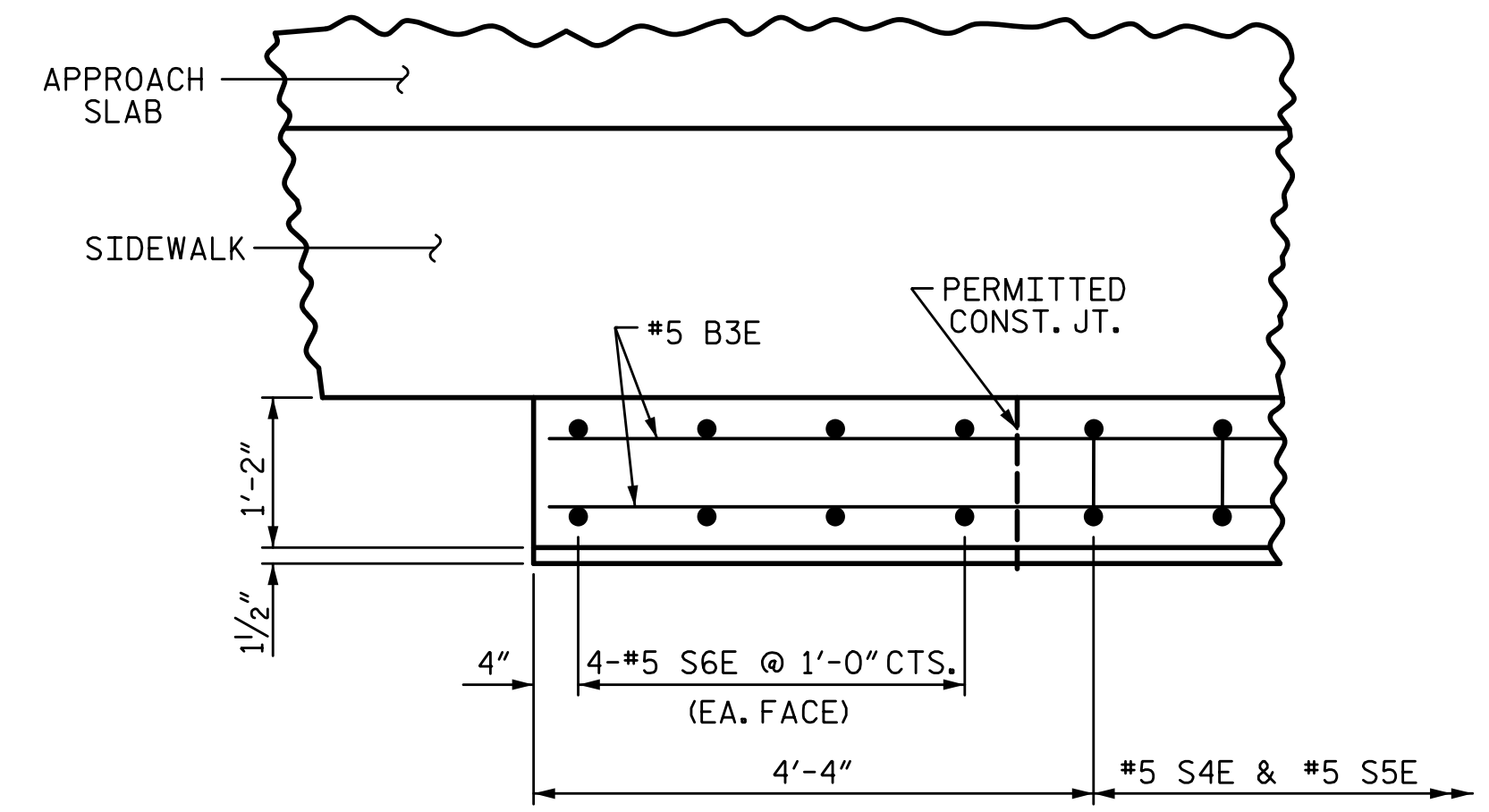
GROOVED CONTRACTION JOINTS, 1/2" IN DEPTH, SHALL BE TOOLED IN ALL EXPOSED FACES OF THE PARAPET IN ACCORDANCE WITH ARTICLE 825-10(B) OF THE STANDARD SPECIFICATIONS. A CONTRACTION JOINT SHALL BE LOCATED AT EACH THIRD POINT BETWEEN PARAPET EXPANSION JOINTS. ONLY ONE CONTRACTION JOINT IS REQUIRED AT MIDPOINT OF PARAPET SEGMENTS LESS THAN 20 FEET IN LENGTH AND NO CONTRACTION JOINTS ARE REQUIRED FOR THOSE SEGMENTS LESS THAN 10 FEET IN LENGTH.

FOR DETAILS AND LOCATION OF GUARDRAIL ANCHOR ASSEMBLIES, SEE "GUARDRAIL ANCHORAGE DETAILS FOR METAL RAILS" SHEET.

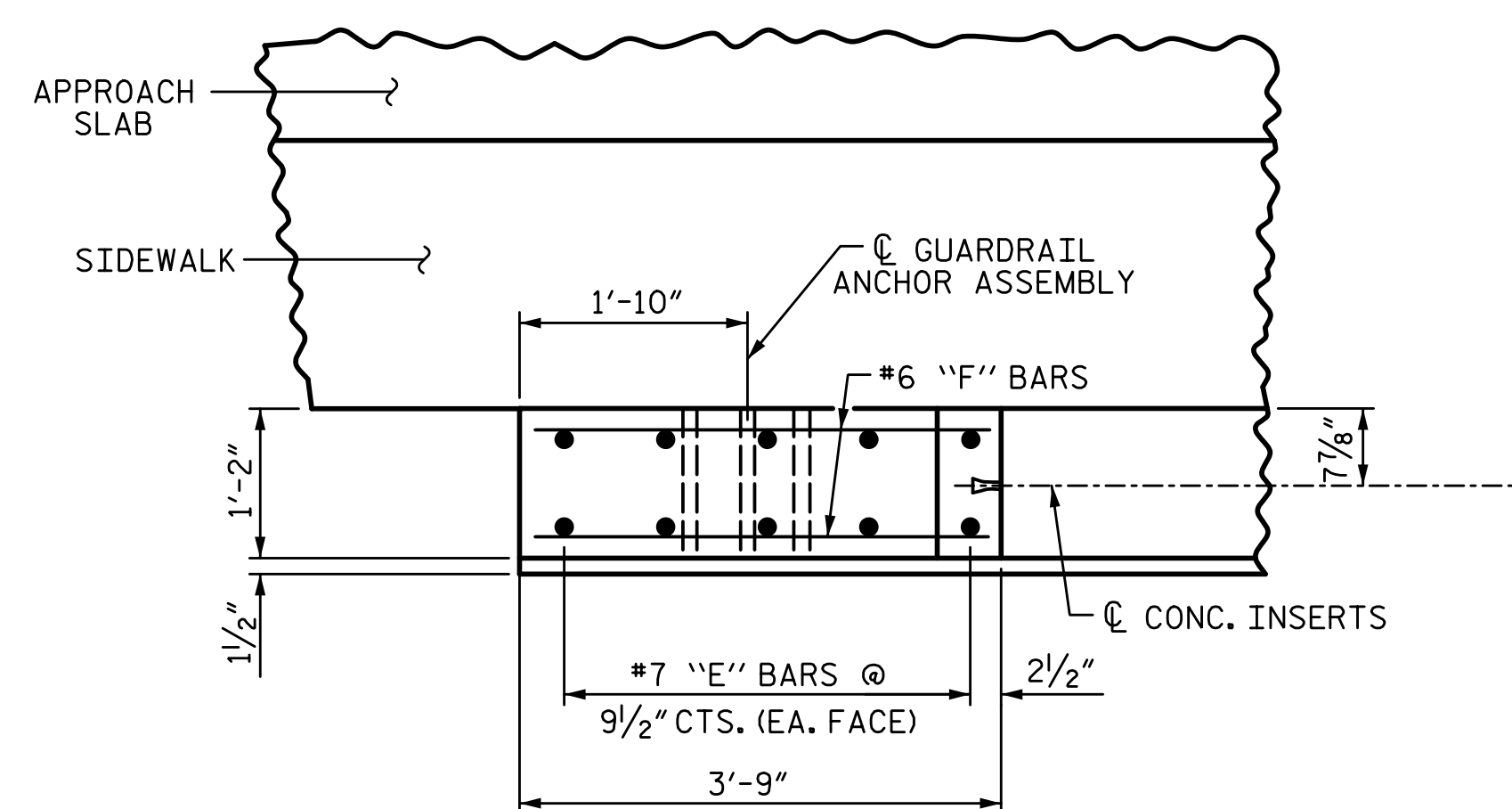
CONCRETE IN PARAPETS SHALL BE CLASS "AA" NORMAL WEIGHT CONCRETE.

BAR TYPES		BILL OF MATERIAL				
		PARAPET AND END POSTS				
BAR	NO.	SIZE	TYPE	LENGTH	WEIGHT	
B1E	48	5	STR	29'-7"	1481	
B2E	32	5	STR	11'-6"	384	
B3E	32	5	STR	8'-0"	267	
E6E	4	7	STR	3'-0"	25	
E7E	4	7	STR	3'-6"	29	
E8E	4	7	STR	4'-0"	33	
E9E	4	7	STR	4'-6"	37	
E10E	4	7	STR	4'-10"	40	
F1E	4	6	STR	2'-0"	12	
F2E	4	6	STR	3'-0"	18	
F3E	4	6	STR	3'-5"	21	
S4E	235	5	1	6'-6"	1593	
S5E	235	5	2	6'-6"	1593	
S6E	16	5	STR	3'-6"	58	
EPOXY COATED REINFORCING STEEL					5591 LB	
CLASS "AA" CONCRETE					32.4 CY	
1'-2" X 3'-0 1/2" CONCRETE PARAPET					243.69 LF	

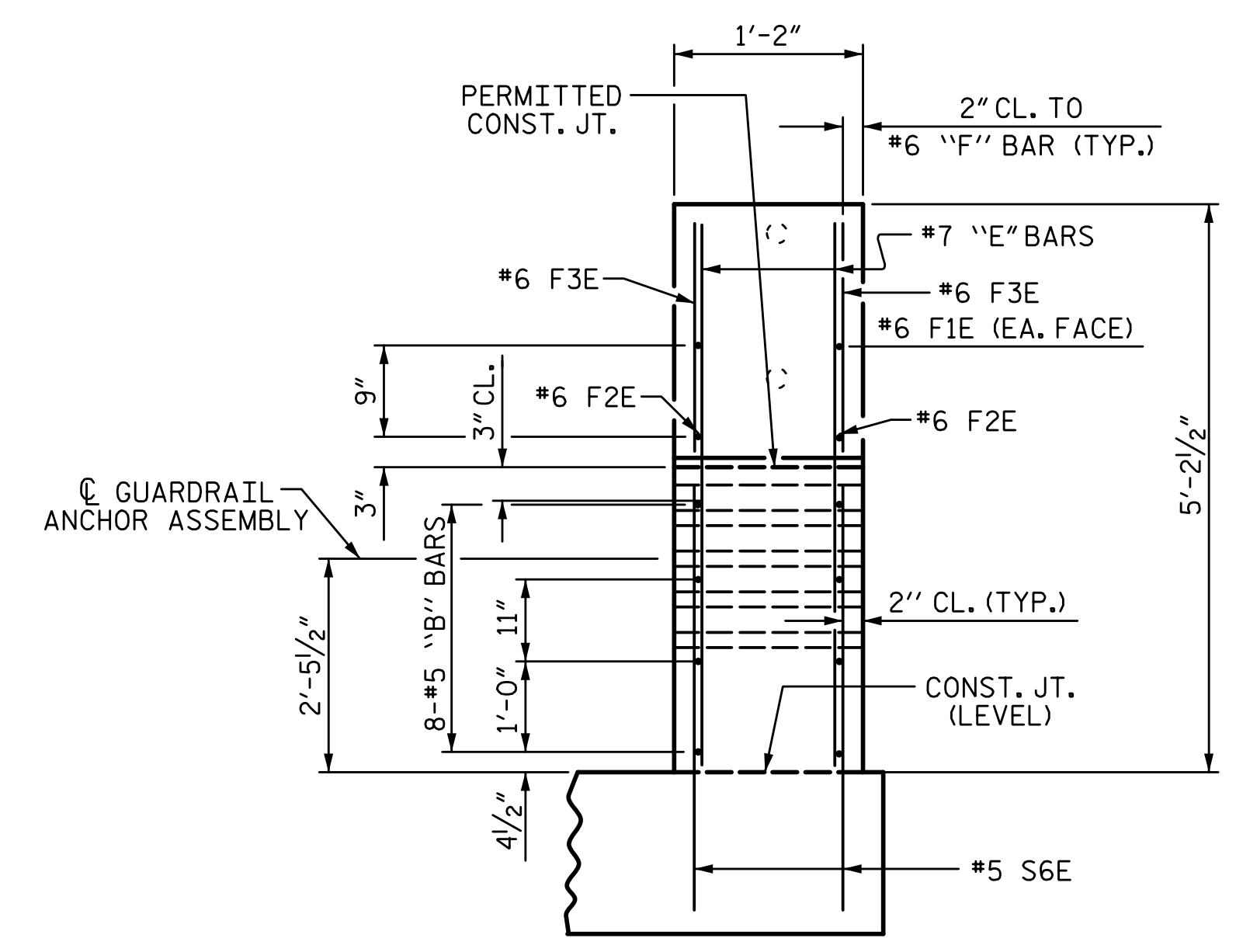
ALL BAR DIMENSIONS ARE OUT TO OUT
"E" INDICATES EPOXY COATED REINFORCING STEEL



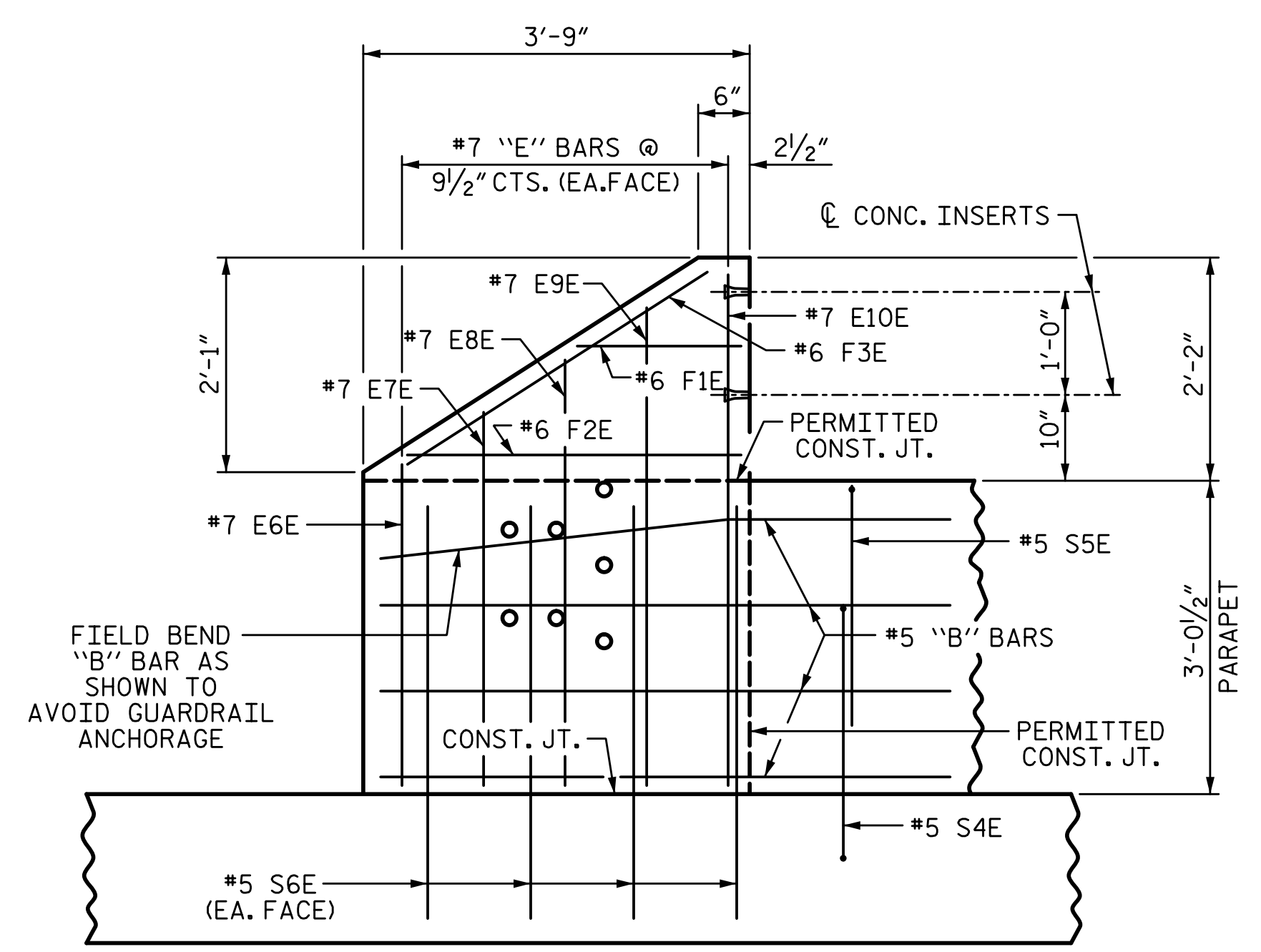
PLAN OF PARAPET



PLAN OF END POST



END VIEW



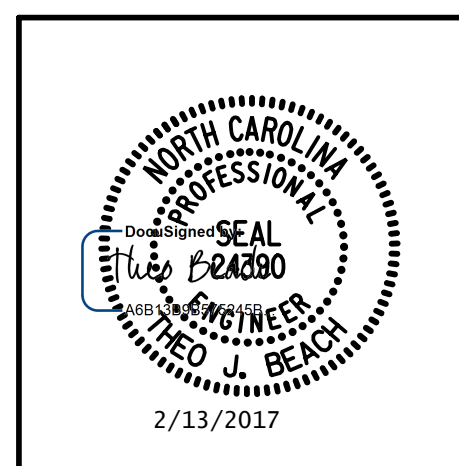
ELEVATION

PARAPET AND END POST FOR TWO BAR RAIL
(SIDEWALK NOT SHOWN FOR CLARITY)

PROJECT NO. U-3109A
ALAMANCE COUNTY
STATION: 26+54.73 -NBL-
SHEET 3 OF 3

STATE OF NORTH CAROLINA DEPARTMENT OF TRANSPORTATION RALEIGH SUPERSTRUCTURE CONCRETE PARAPET DETAILS (RIGHT SIDE)					
REVISIONS					
NO.	BY:	DATE:	NO.	BY:	DATE:
1			3		
2			4		

PLANS PREPARED BY:
SIMPSON ENGINEERS & ASSOCIATES
5640 Dillard Drive
Suite 200
Cary, NC 27518
(919) 852-0468
(919) 852-0598 (Fax)
www.simpsonengr.com
LICENSURE NO. C-2521



DRAWN BY: S. D. COOPER DATE: 5-15
CHECKED BY: B.S. COX DATE: 5-15
DESIGN ENGINEER OF RECORD: T.J. BEACH DATE: 5-15

SHEET NO.
S01-24
TOTAL SHEETS
S01-49