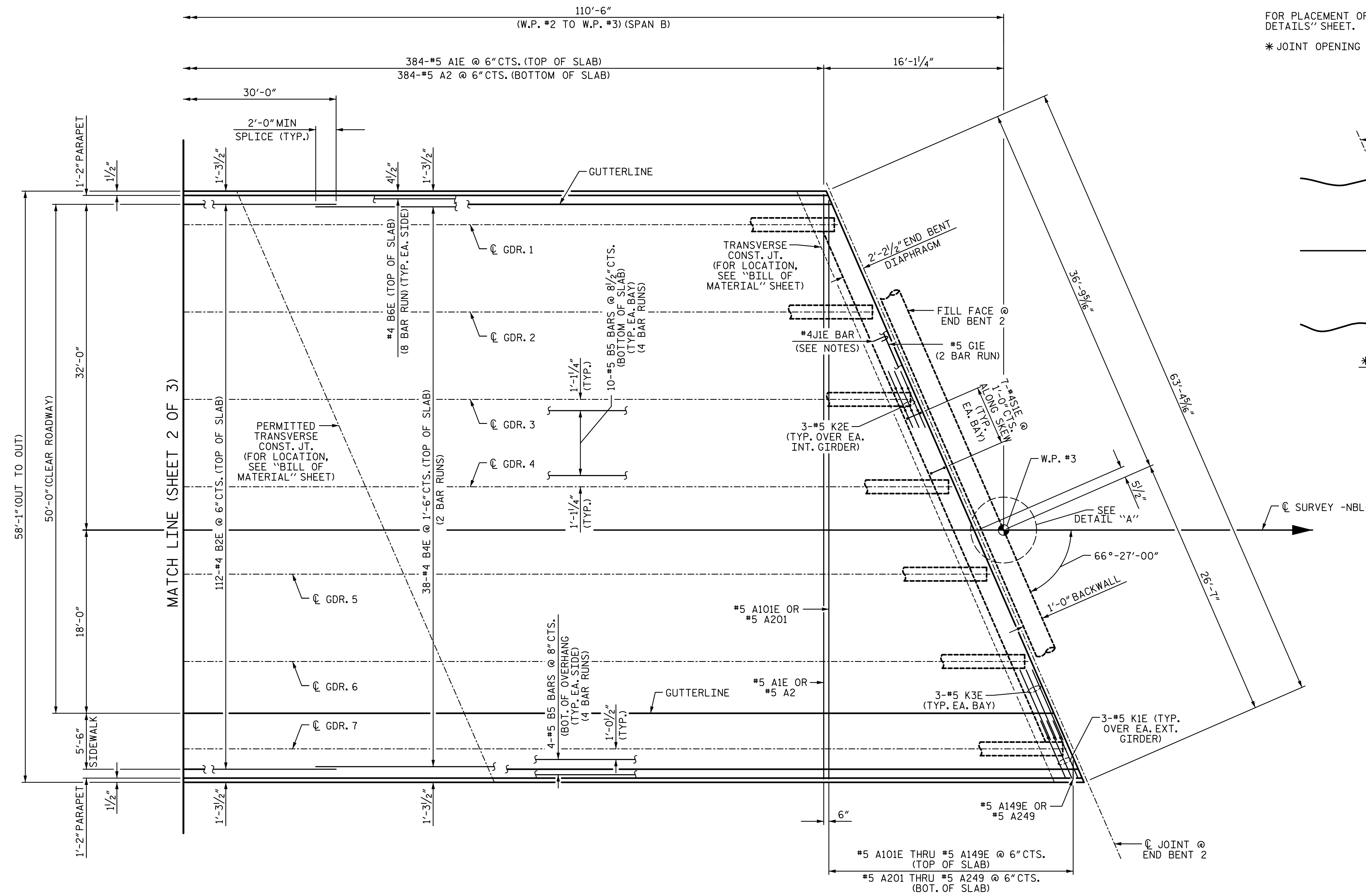


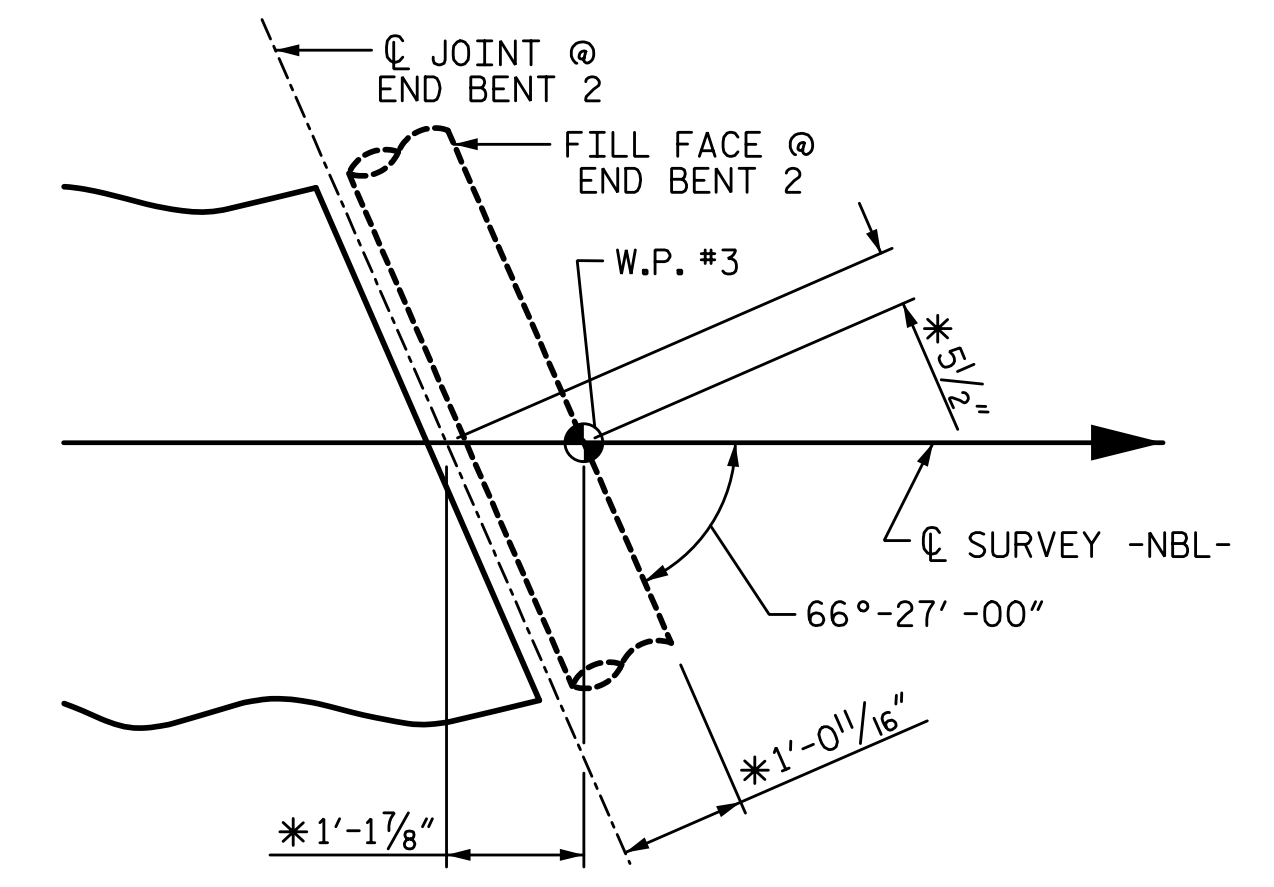
2/10/2017 9:09:01 AM G:\Projects\2014\U-3109A\Structures\Site 1-Bridge 434 (NBL)\Drawings\Final\401_U3109A_SMU_PS.dgn



PARTIAL PLAN - SPAN B

NOTES:

- FOR PARAPET REINFORCING STEEL, SEE "CONCRETE PARAPET DETAILS" SHEETS.
- FOR SIDEWALK REINFORCING STEEL, SEE "SIDEWALK DETAILS" SHEET.
- FOR PLACEMENT OF #4JIE BARS, SEE "EXPANSION JOINT SEAL DETAILS" SHEET.
- * JOINT OPENING AND OFFSETS BASED ON 60° JOINT OPENING.



DETAIL "A"

PROJECT NO. U-3109A
ALAMANCE COUNTY
 STATION: 26+54.73 -NBL-

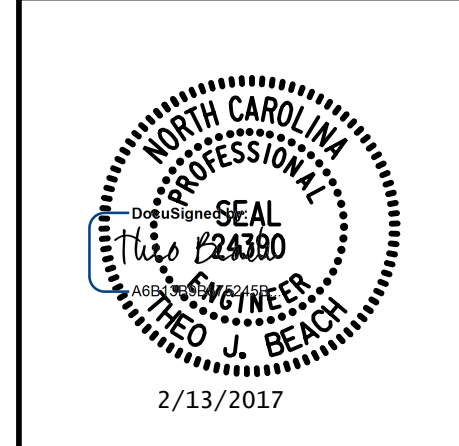
SHEET 3 OF 3

STATE OF NORTH CAROLINA
 DEPARTMENT OF TRANSPORTATION
 RALEIGH
 SUPERSTRUCTURE

PLAN OF SPANS
 (2 SPAN CONTINUOUS UNIT)
 (SPAN B)

DRAWN BY: S. D. COOPER	DATE: 5-15
CHECKED BY: B.S. COX	DATE: 5-15
DESIGN ENGINEER OF RECORD: T.J. BEACH	DATE: 5-15

PLANS PREPARED BY:
SIMPSON ENGINEERS & ASSOCIATES
 5640 Dillard Drive
 Suite 200
 Cary, NC 27518
 (919) 852-0468
 (919) 852-0598 (Fax)
 www.simpsonengr.com
 LICENSURE NO. C-2521



REVISIONS						SHEET NO.
NO.	BY:	DATE:	NO.	BY:	DATE:	
1			3			S01-10
2			4			TOTAL SHEETS S01-49