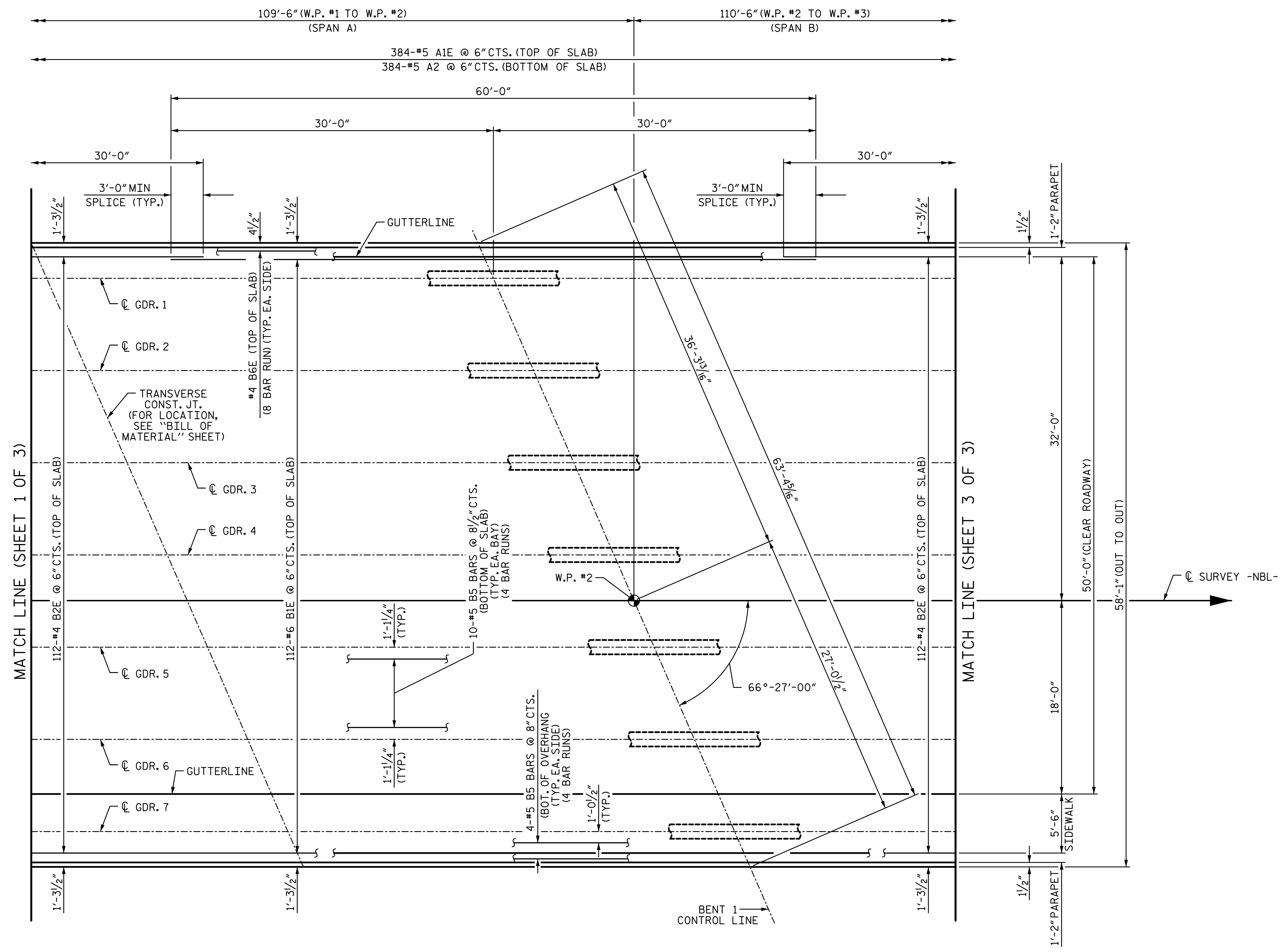


2/10/2017 9:09:00 AM G:\Projects\2014\U-3109A\Structures\Site 1-Bridge 434 (NBL)\Drawings\Final\401\_U3109A\_SMU\_PS.dgn



**PARTIAL PLAN - SPANS A AND B**

**NOTES:**  
 FOR PARAPET REINFORCING STEEL, SEE "CONCRETE PARAPET DETAILS" SHEETS.  
 FOR SIDEWALK REINFORCING STEEL, SEE "SIDEWALK DETAILS" SHEET.

PROJECT NO. U-3109A  
ALAMANCE COUNTY  
 STATION: 26+54.73 -NBL-

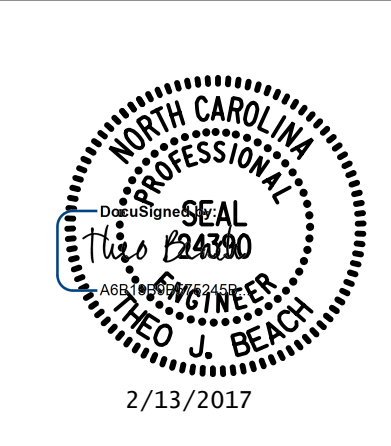
SHEET 2 OF 3

STATE OF NORTH CAROLINA  
 DEPARTMENT OF TRANSPORTATION  
 RALEIGH  
 SUPERSTRUCTURE

**PLAN OF SPANS**  
 (2 SPAN CONTINUOUS UNIT)  
 (SPANS A & B)

DRAWN BY: S. D. COOPER DATE: 5-15  
 CHECKED BY: B.S. COX DATE: 5-15  
 DESIGN ENGINEER OF RECORD: T.J. BEACH DATE: 5-15

PLANS PREPARED BY:  
**SIMPSON ENGINEERS & ASSOCIATES**  
 5640 Dillard Drive  
 Suite 200  
 Cary, NC 27518  
 (919) 852-0468  
 (919) 852-0598 (Fax)  
 www.simpsonengr.com  
 LICENSURE NO. C-2521



REVISIONS						SHEET NO.
NO.	BY:	DATE:	NO.	BY:	DATE:	SHEET NO.
1			3			TOTAL SHEETS
2			4			S01-49