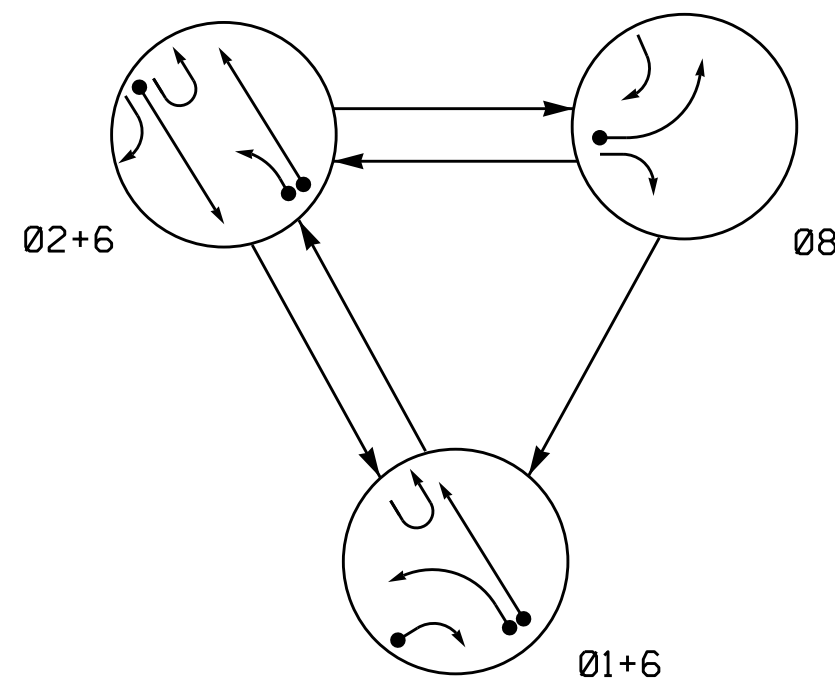


PHASING DIAGRAM



PHASING DIAGRAM DETECTION LEGEND
 ←● DETECTED MOVEMENT
 ←○ UNDETECTED MOVEMENT (OVERLAP)
 ←- - UNSIGNALIZED MOVEMENT
 ←- - PEDESTRIAN MOVEMENT

SIGNAL FACE	PHASE			
	Ø1+6	Ø2+6	Ø8	F L S H
11	←	←	←	←
21	←	←	←	←
22, 24	R	G	R	Y
23	R	G	R	Y
61, 62, 63	G	G	R	Y
81	R	R	←	R
82	R	R	←	R

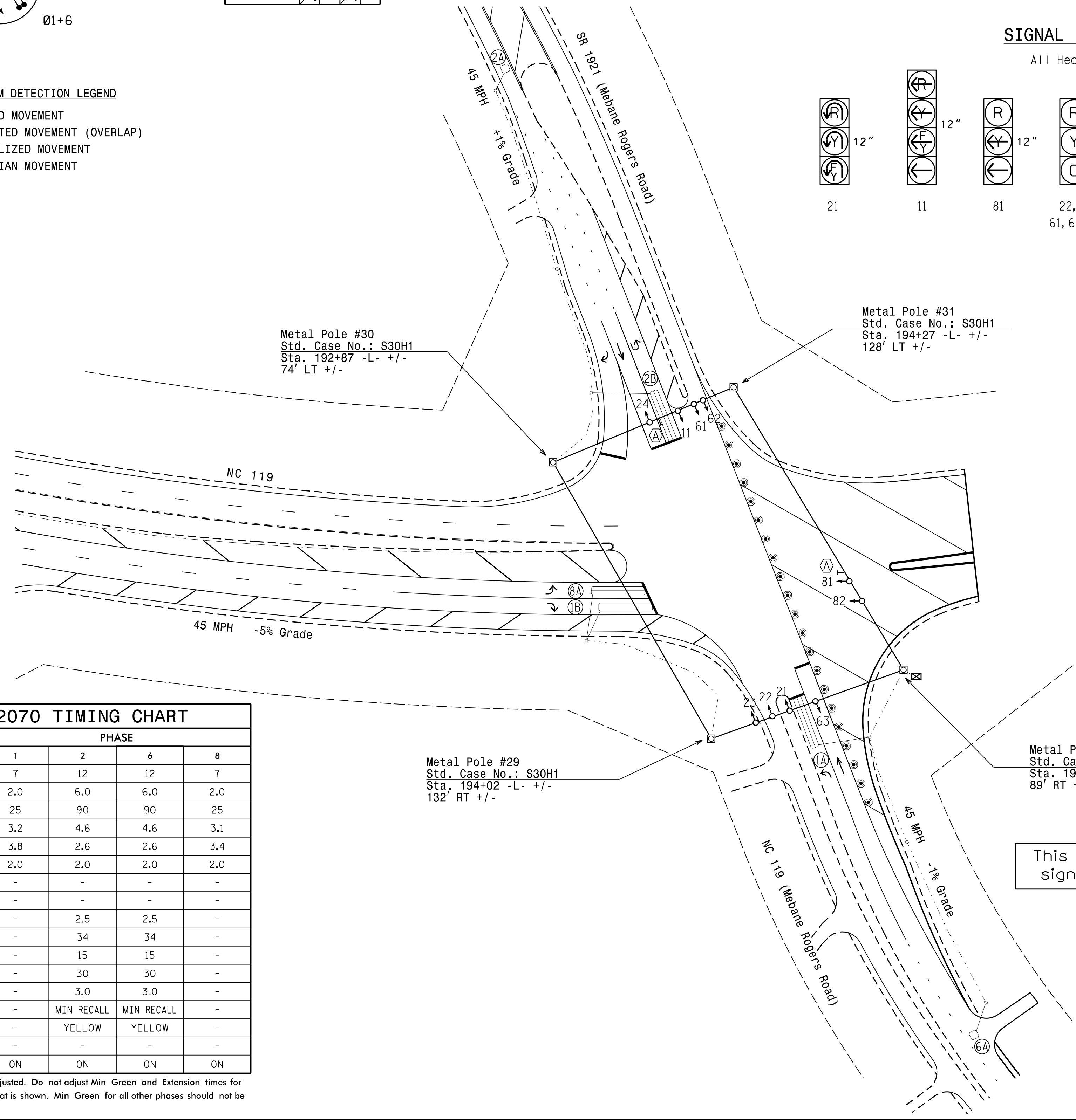
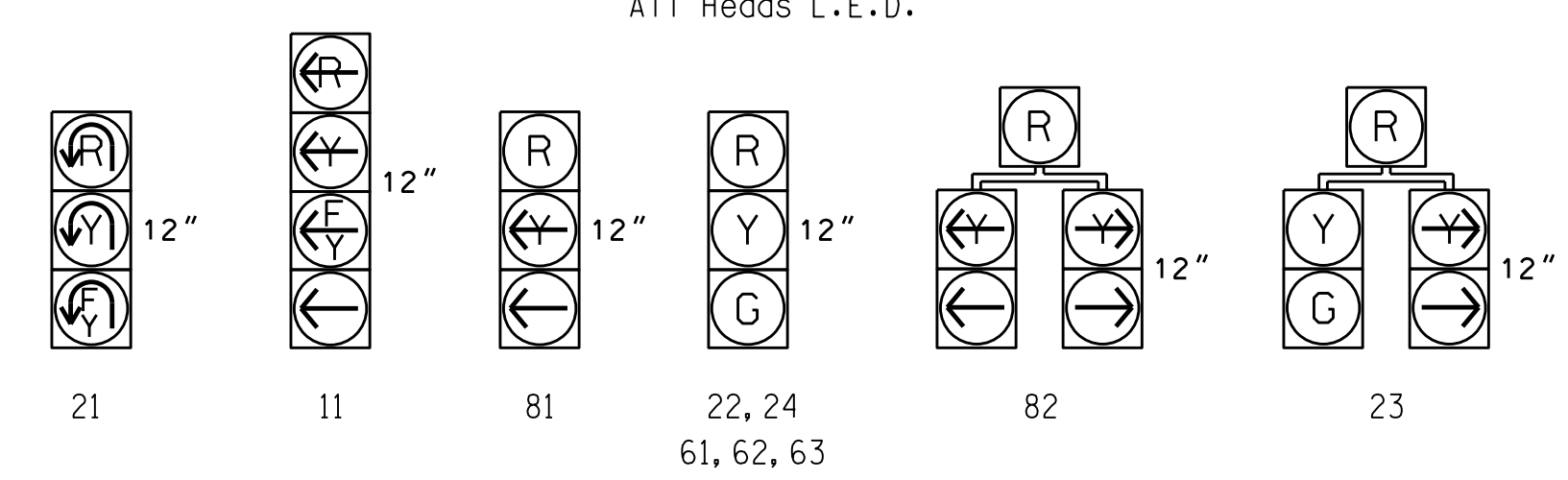
OASIS 2070 LOOP & DETECTOR INSTALLATION CHART												
INDUCTIVE LOOPS					DETECTOR PROGRAMMING							
LOOP	SIZE (FT)	DISTANCE FROM STOPBAR (FT)	TURNS	NEW LOOP	PHASE	CALLING	EXTENSION	FULL TIME DELAY	STRETCH TIME	DELAY TIME	SYSTEM LOOP	NEW CARD
IA	6X40	0	2-4-2	Y	1	Y	Y	-	-	15	-	Y
					6	Y	Y	Y	-	3	-	Y
IB	6X40	0	2-4-2	Y	1	Y	Y	-	-	15	-	Y
2A	6X6	300	4	Y	2	Y	Y	-	-	-	-	Y
2B	6X40	0	2-4-2	Y	2	Y	Y	Y	-	3	-	Y
6A	6X6	300	4	Y	6	Y	Y	-	-	-	-	Y
8A	6X40	0	2-4-2	Y	8	Y	Y	-	-	-	-	Y

3 Phase Fully Actuated (Isolated)

NOTES

- Refer to "Roadway Standard Drawings NCDOT" dated January 2012 and "Standard Specifications for Roads and Structures" dated January 2012.
- Do not program signal for late night flashing operation unless otherwise directed by the Engineer.
- Phase 1 may be lagged.
- Set all detector units to presence mode.
- Locate new cabinet so as not to obstruct sight distance of vehicles turning right on red.

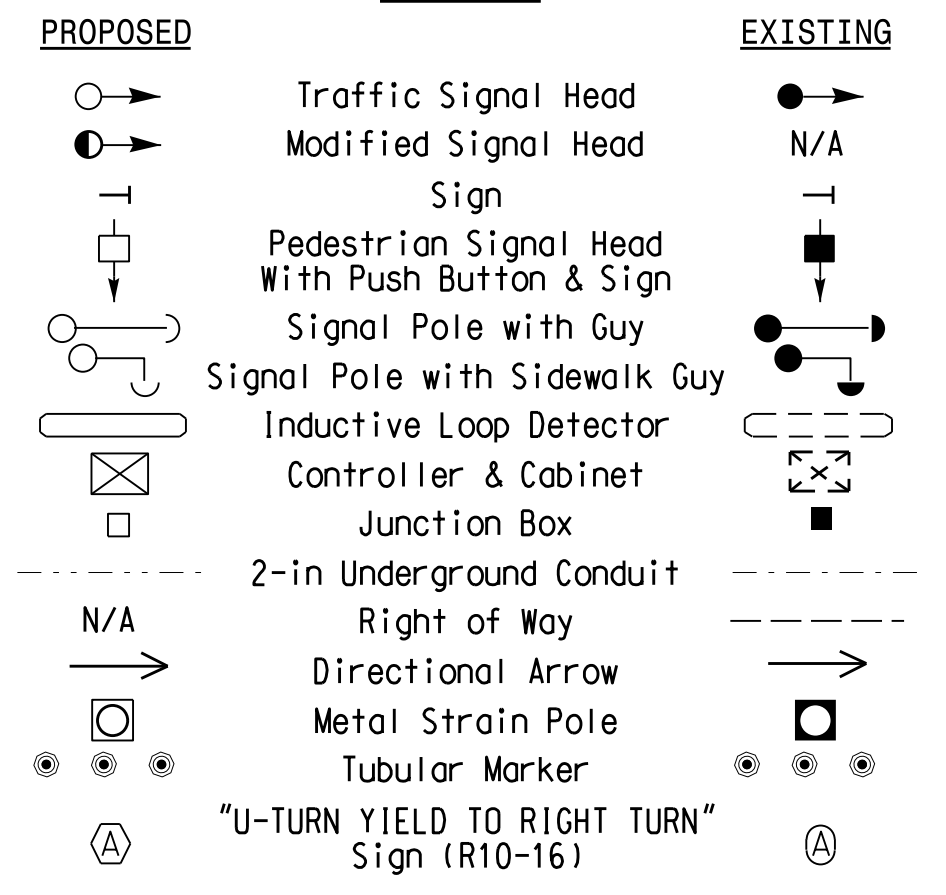
SIGNAL FACE I.D.



FEATURE	PHASE			
	1	2	6	8
Min Green 1*	7	12	12	7
Extension 1*	2.0	6.0	6.0	2.0
Max Green 1*	25	90	90	25
Yellow Clearance	3.2	4.6	4.6	3.1
Red Clearance	3.8	2.6	2.6	3.4
Red Revert	2.0	2.0	2.0	2.0
Walk 1*	-	-	-	-
Don't Walk 1	-	-	-	-
Seconds Per Actuation*	-	2.5	2.5	-
Max Variable Initial*	-	34	34	-
Time Before Reduction*	-	15	15	-
Time To Reduce*	-	30	30	-
Minimum Gap	-	3.0	3.0	-
Recall Mode	-	MIN RECALL	MIN RECALL	-
Vehicle Call Memory	-	YELLOW	YELLOW	-
Dual Entry	-	-	-	-
Simultaneous Gap	ON	ON	ON	ON

* These values may be field adjusted. Do not adjust Min Green and Extension times for phases 2 and 6 lower than what is shown. Min Green for all other phases should not be lower than 4 seconds.

LEGEND



This plan supersedes the plan signed and sealed on 1/20/17.

New Installation

Prepared In the Offices of:

 TRANSPORTATION MOBILITY AND SAFETY DIVISION
 NORTH CAROLINA DEPARTMENT OF TRANSPORTATION
 Signal Design Section
 750 N. Greenfield Pkwy, Garner, NC 27529

SR 1921 (Mebane Rogers Road) at NC 119
 Alamance County, Mebane

Division 7
 PLAN DATE: February 2017
 PREPARED BY: I. O. Umuzurike
 REVISIONS: _____ INIT. DATE _____
 REVIEWED BY: _____

DOCUMENT NOT CONSIDERED FINAL UNLESS ALL SIGNATURES COMPLETED

SEAL
 NORTH CAROLINA PROFESSIONAL ENGINEER
 ROBERT J. ZIEMBA
 License No. 026486
 3/1/2017
 SIG. INVENTORY NO. 07-1555

01-MSS-2017-10-18
 P:\MTPP\0109A\T\off\c\sig\des\gn\07-1555\071555_sig.dgn, 20170301.dgn
 P:\MTPP\0109A\T\off\c\sig\des\gn\07-1555\071555_sig.dgn, 20170301.dgn
 P:\MTPP\0109A\T\off\c\sig\des\gn\07-1555\071555_sig.dgn, 20170301.dgn