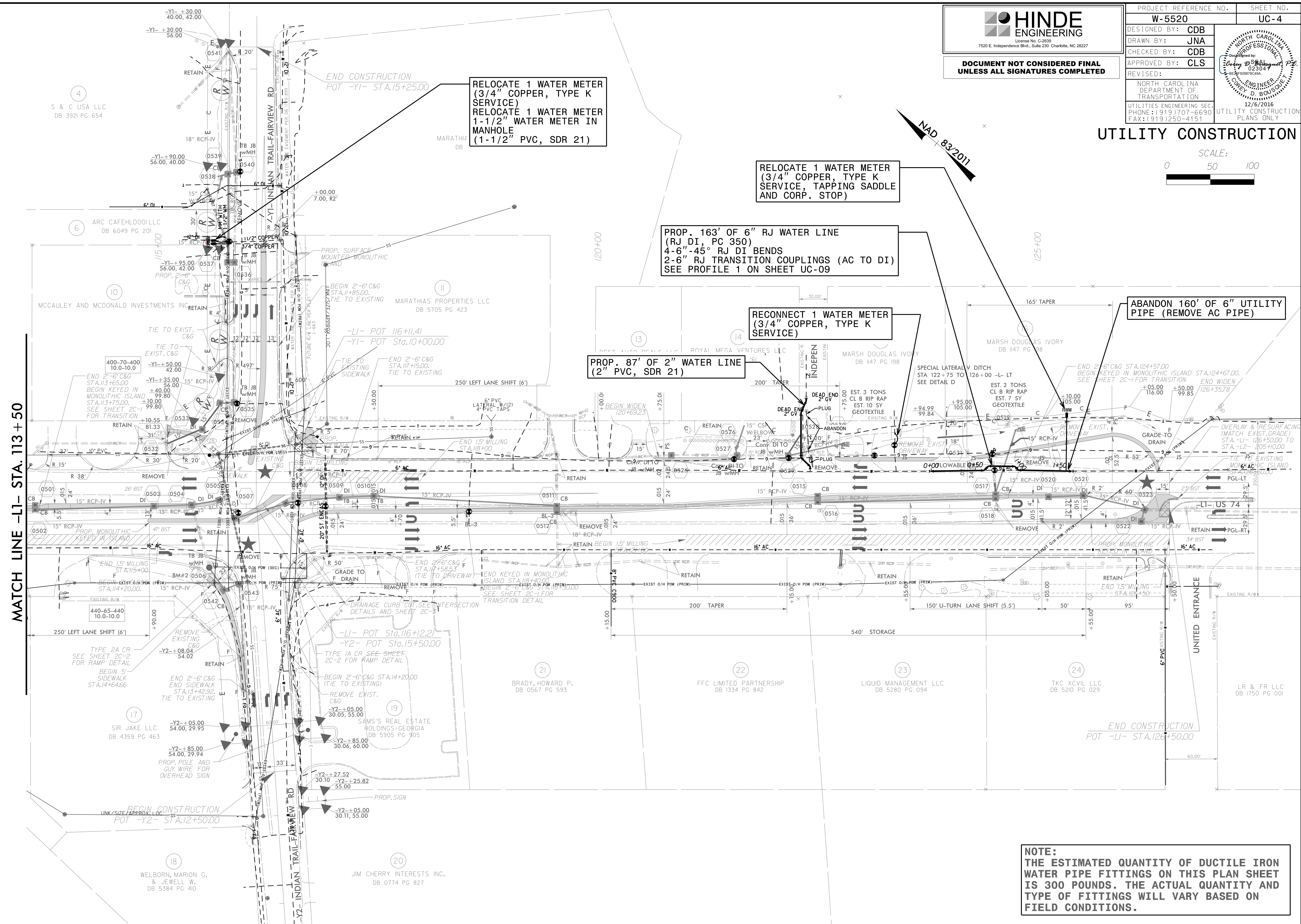


DOCUMENT NOT CONSIDERED FINAL
UNLESS ALL SIGNATURES COMPLETED

PROJECT REFERENCE NO.	W-5520	SHEET NO.	UC-4
DESIGNED BY:	CDB		
DRAWN BY:	JNA		
CHECKED BY:	CDB		
APPROVED BY:	CLS		
REVISED:		NORTH CAROLINA DEPARTMENT OF TRANSPORTATION	12/6/2016
UTILITIES ENGINEERING SEC.	PHONE: (919) 707-6690 FAX: (919) 250-4151	UTILITY CONSTRUCTION PLANS ONLY	

UTILITY CONSTRUCTION



RELOCATE 1 WATER METER
(3/4" COPPER, TYPE K
SERVICE)
RELOCATE 1 WATER METER
1-1/2" WATER METER IN
MANHOLE
(1-1/2" PVC, SDR 21)

RELOCATE 1 WATER METER
(3/4" COPPER, TYPE K
SERVICE, TAPPING SADDLE
AND CORP. STOP)

PROP. 163' OF 6" RJ WATER LINE
(RJ DI, PC 350)
4-6"-45° RJ DI BENDS
2-6" RJ TRANSITION COUPLINGS (AC TO DI)
SEE PROFILE 1 ON SHEET UC-09

PROP. 87' OF 2" WATER LINE
(2" PVC, SDR 21)

RECONNECT 1 WATER METER
(3/4" COPPER, TYPE K
SERVICE)

ABANDON 160' OF 6" UTILITY
PIPE (REMOVE AC PIPE)

MATCH LINE -LI- STA. 113+50

END CONSTRUCTION
POT -LI- STA. 126+50.00

NOTE:
THE ESTIMATED QUANTITY OF DUCTILE IRON
WATER PIPE FITTINGS ON THIS PLAN SHEET
IS 300 POUNDS. THE ACTUAL QUANTITY AND
TYPE OF FITTINGS WILL VARY BASED ON
FIELD CONDITIONS.

S:\C-2016-01-01\PROJECTS\2013\A2013114.00 DRMP - W-5520.IndonTrail-US 74\Design\Utilities\Engineering\UC\Proj_W5520_ut_rdy5_UC04_psh.dgn
 26-DEC-2016 01:01