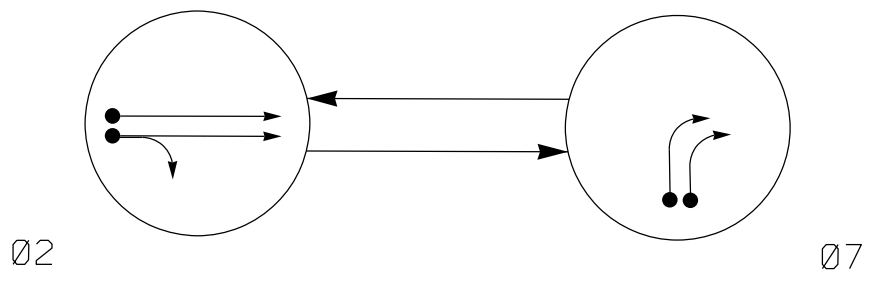


2 Phase
Fully Actuated
US 74 - Indian Trail CLS #1

PHASING DIAGRAM



PHASING DIAGRAM DETECTION LEGEND

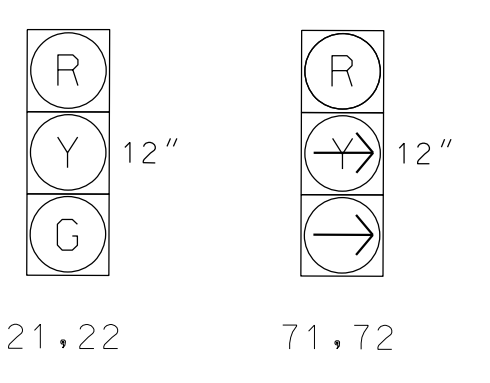
- ←● DETECTED MOVEMENT
- ← UNDETECTED MOVEMENT (OVERLAP)
- ← UNSIGNALIZED MOVEMENT
- ← PEDESTRIAN MOVEMENT

TABLE OF OPERATION

SIGNAL FACE	PHASE		
	02	07	FLASH
21, 22	G	R	Y
71, 72	R	←	R

SIGNAL FACE I.D.

All Heads L.E.D.

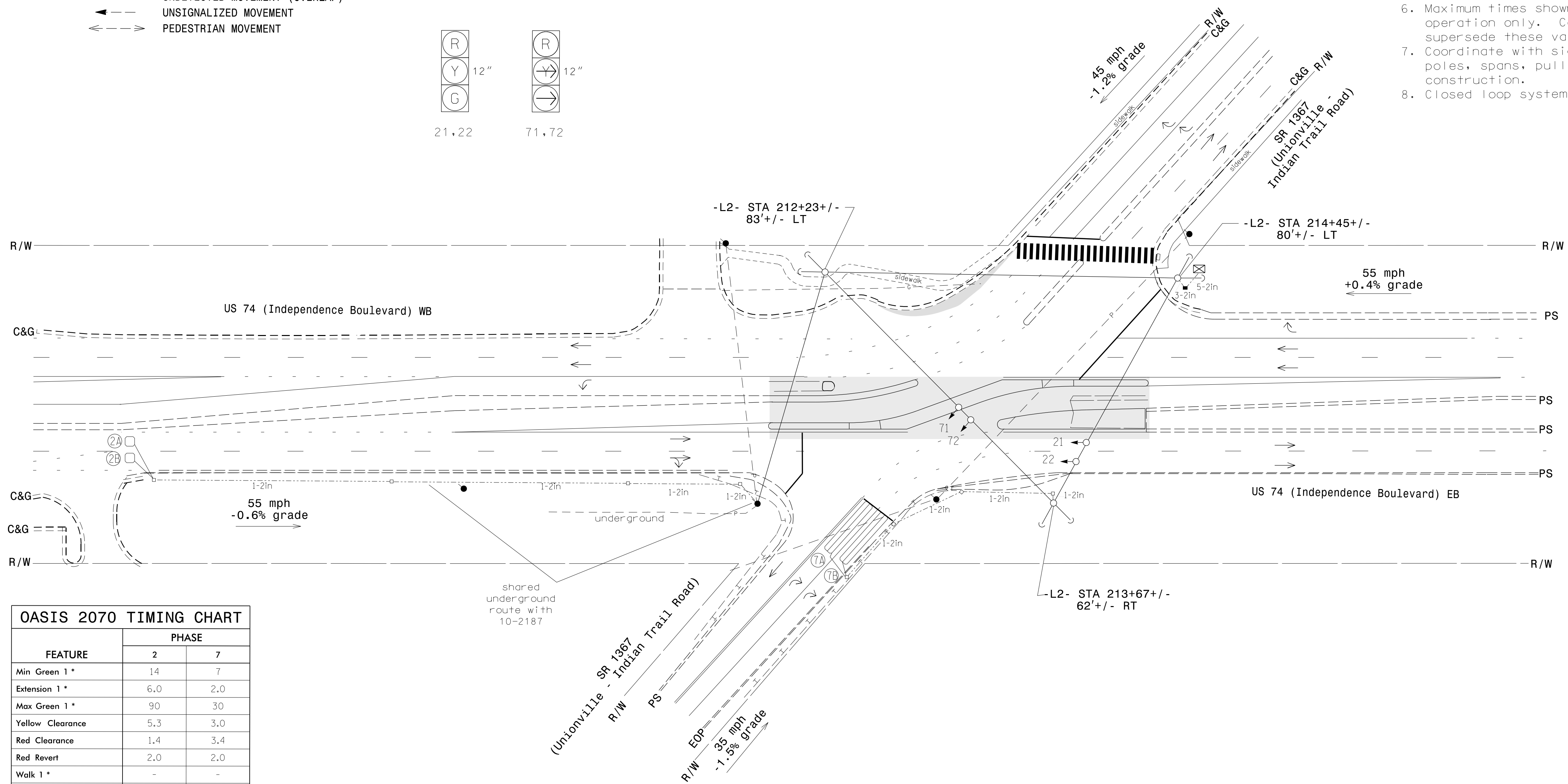


OASIS 2070 LOOP & DETECTOR INSTALLATION CHART

LOOP	SIZE (FT)	DISTANCE FROM STOPBAR (FT)	TURNS	NEW LOOP	DETECTOR PROGRAMMING							
					PHASE	CALLING	EXTENSION	FULL TIME DELAY	STRETCH TIME	DELAY TIME	SYSTEM LOOP	NEW CARD
2A	6X6	420	6	Y	2	Y	Y	-	-	-	-	Y
2B	6X6	420	6	Y	2	Y	Y	-	-	-	-	Y
7A	6X40	0	2-4-2	Y	7	Y	Y	-	-	10	-	Y
7B	6X40	0	2-4-2	Y	7	Y	Y	-	-	10	-	Y

NOTES

- Refer to "Roadway Standard Drawings NCDOT" dated January 2012 and "Standard Specifications for Roads and Structures" dated January 2012.
- Do not program signal for late night flashing operation unless otherwise directed by the Engineer.
- Set all detector units to presence mode.
- Locate new cabinet so as not to obstruct sight distance of vehicles turning right on red.
- Install combination panel with pedestal extension (see Std drawing 1700.01).
- Maximum times shown in timing chart are for free-run operation only. Coordinated signal system timing values supersede these values.
- Coordinate with signal 10-2187T1 & 10-2187 - shared poles, spans, pull boxes and conduit systems construction.
- Closed loop system data: Controller Asset #2188.



OASIS 2070 TIMING CHART

FEATURE	PHASE	
	2	7
Min Green 1 *	14	7
Extension 1 *	6.0	2.0
Max Green 1 *	90	30
Yellow Clearance	5.3	3.0
Red Clearance	1.4	3.4
Red Revert	2.0	2.0
Walk 1 *	-	-
Don't Walk 1	-	-
Seconds Per Actuation *	1.5	-
Max Variable Initial *	46	-
Time Before Reduction *	15	-
Time To Reduce *	30	-
Minimum Gap	3.4	-
Recall Mode	MIN RECALL	-
Vehicle Call Memory	YELLOW	-
Dual Entry	-	-
Simultaneous Gap	ON	ON

* These values may be field adjusted. Do not adjust Min Green and Extension times for phase 2 lower than what is shown. Min Green for all other phases should not be lower than 4 seconds.

LEGEND

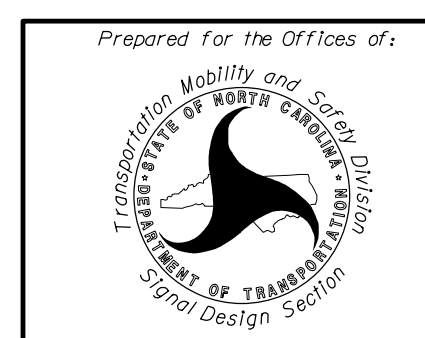
- | PROPOSED | EXISTING |
|--|----------|
| ○ → Traffic Signal Head | ● → N/A |
| ○ → Modified Signal Head | ○ → N/A |
| ○ → Sign | ○ → N/A |
| ○ → Pedestrian Signal Head With Push Button & Sign | ○ → N/A |
| ○ → Signal Pole with Guy | ○ → N/A |
| ○ → Signal Pole with Sidewalk Guy | ○ → N/A |
| ○ → Inductive Loop Detector | ○ → N/A |
| ○ → Controller & Cabinet | ○ → N/A |
| ○ → Junction Box | ○ → N/A |
| ○ → Oversized Junction Box | ○ → N/A |
| ○ → 2-in Underground Conduit | ○ → N/A |
| ○ → Directional Drill | ○ → N/A |
| ○ → Right of Way | ○ → N/A |
| ○ → Underground Water Line | ○ → N/A |
| ○ → Power Line | ○ → N/A |
| ○ → Underground Telephone Cable | ○ → N/A |
| ○ → Underground Gas Line | ○ → N/A |
| ○ → Directional Arrow | ○ → N/A |
| ○ → Construction Zone | ○ → N/A |

Signal Upgrade
TCP Phase III - Temporary Design I

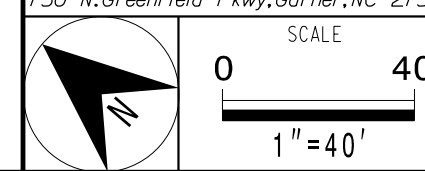
DOCUMENT NOT CONSIDERED FINAL
UNLESS ALL SIGNATURES COMPLETED

PLANS PREPARED BY:
DRMP
ENGINEERS • PLANNERS • SCIENTISTS

DRMP, INC.
5650 FAIRVIEW ROAD, SUITE 320
CHARLOTTE, NC 28210
NC LICENSE NO. C-2213 • (704) 332-2289



US 74 (Independence Blvd) EB
at
SR 1367 (Unionville-Indian Trail Road)
Division 10 Union County Indian Trail
PLAN DATE: June 2015 REVIEWED BY: L Moon
PREPARED BY: K Smith REVIEWED BY: J Highland



REVISIONS	INIT.	DATE

SEAL
NORTH CAROLINA
PROFESSIONAL
ENGINEER
LISA M. MOON
8/30/2016
DATE
SIG. INVENTORY NO. 10-2188T1

30-AUG-2016 09:51
N:\Projects\2015\10-2188T1\10-2188T1.dgn
P:\Users\jhighland\AT-CAR-RN15SEN-WF