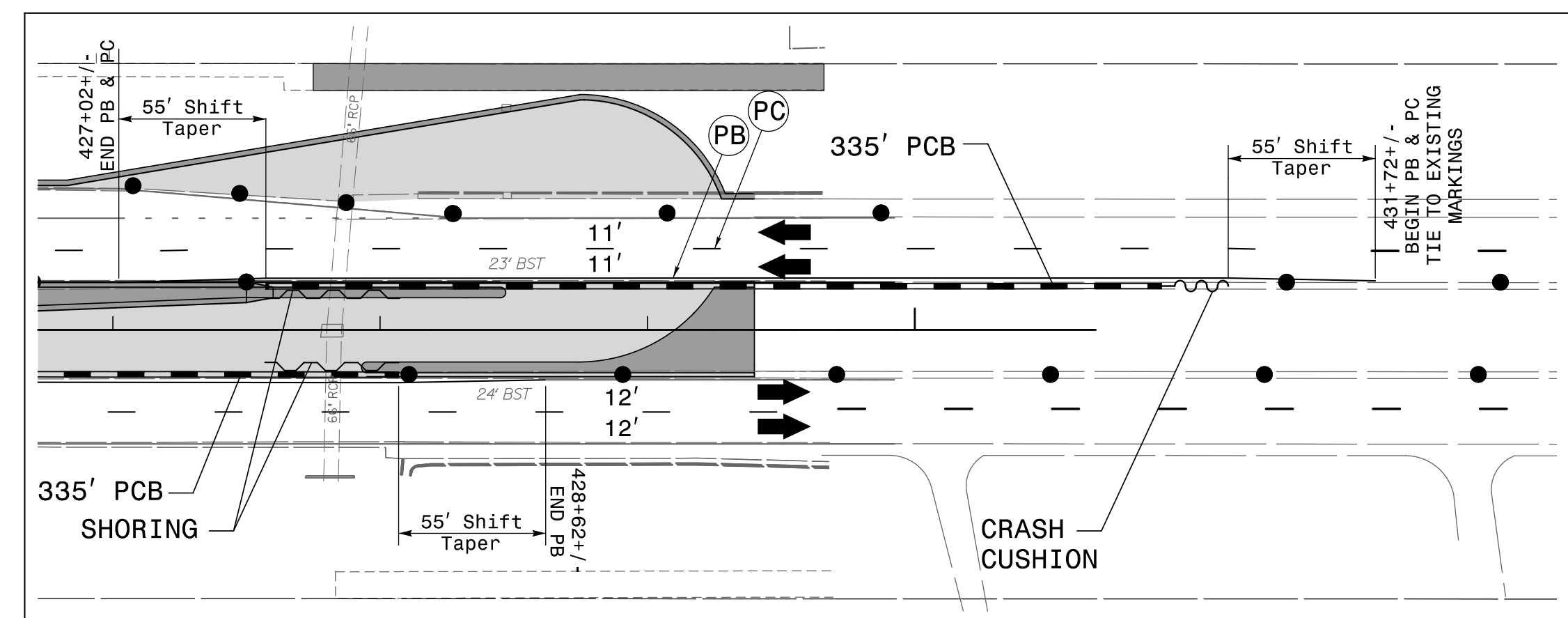


INSET A



NOTE:

- EXISTING PAVEMENT MARKINGS ARE SHOWN IN THIS PHASE UNLESS OTHERWISE SHOWN.
- TRAFFIC IS MAINTAINED IN EXISTING TRAFFIC PATTERN UNLESS OTHERWISE SHOWN.
- TRAFFIC IS MAINTAINED AT THE EASTBOUND AND WESTBOUND APPROACH WHERE SHORING IS SHOWN WITH 335' OF CONCRETE BARRIER ALONG WITH CRASH CUSHIONS.

MATCH LINE -L4- STA. 415+50 SEE SHEET 29

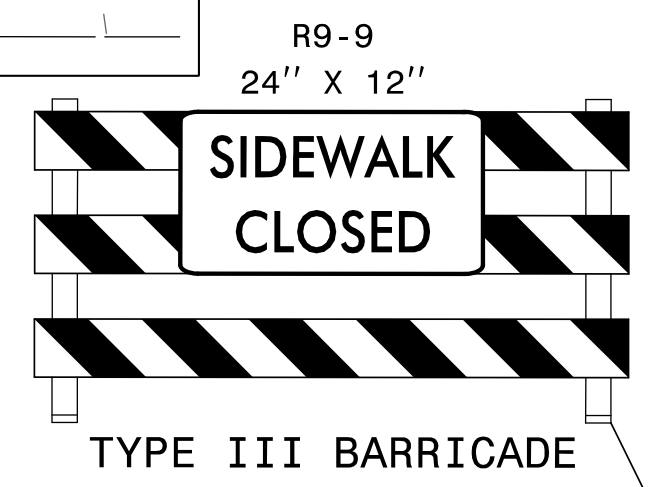
-Y7- SARDIS CHURCH RD (SR 1515)

-Y8- WESLEY CHAPEL STOUTS RD (SR 1377)

420

425

PHASE I, STEP 3



INSTALL 15" PIPE USING TEMPORARY LANE CLOSURES DURING NIGHT TIME WORK HOURS. COVER WITH STEEL PLATES DURING NORMAL TRAFFIC OPERATIONS UNTIL INSTALLATION IS COMPLETE.

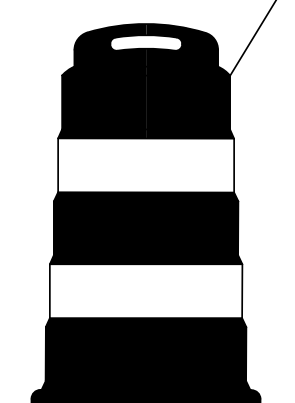
PHASE I, STEP 5

SEE INSET A ON THIS SHEET

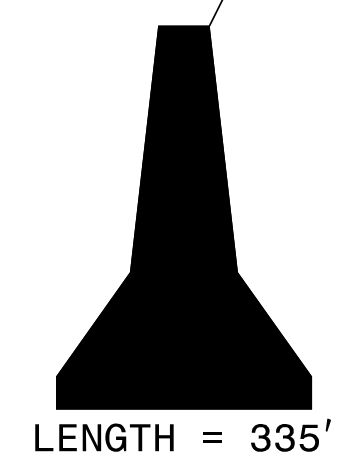
① TEMPORARY SHORING FROM -L4- STA. 427+57, 13.33' LT TO -L4- STA. 428.07, 13.34' LT QUANTITY = 288 SQ FT

REMOVE DAMAGED STRUCTURE REPLACE WITH TB W/SLAB LID

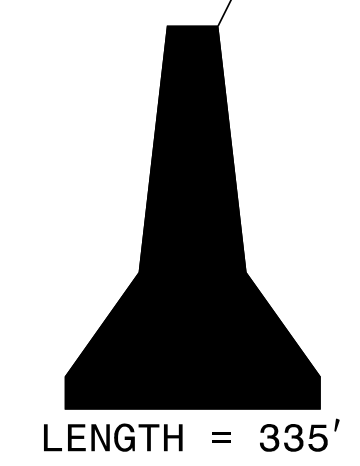
② TEMPORARY SHORING FROM -L4- STA. 427+57, 13.66' RT TO -L4- STA. 428.07, 13.72' RT QUANTITY = 288 SQ FT



SPACING = 80' TYP.

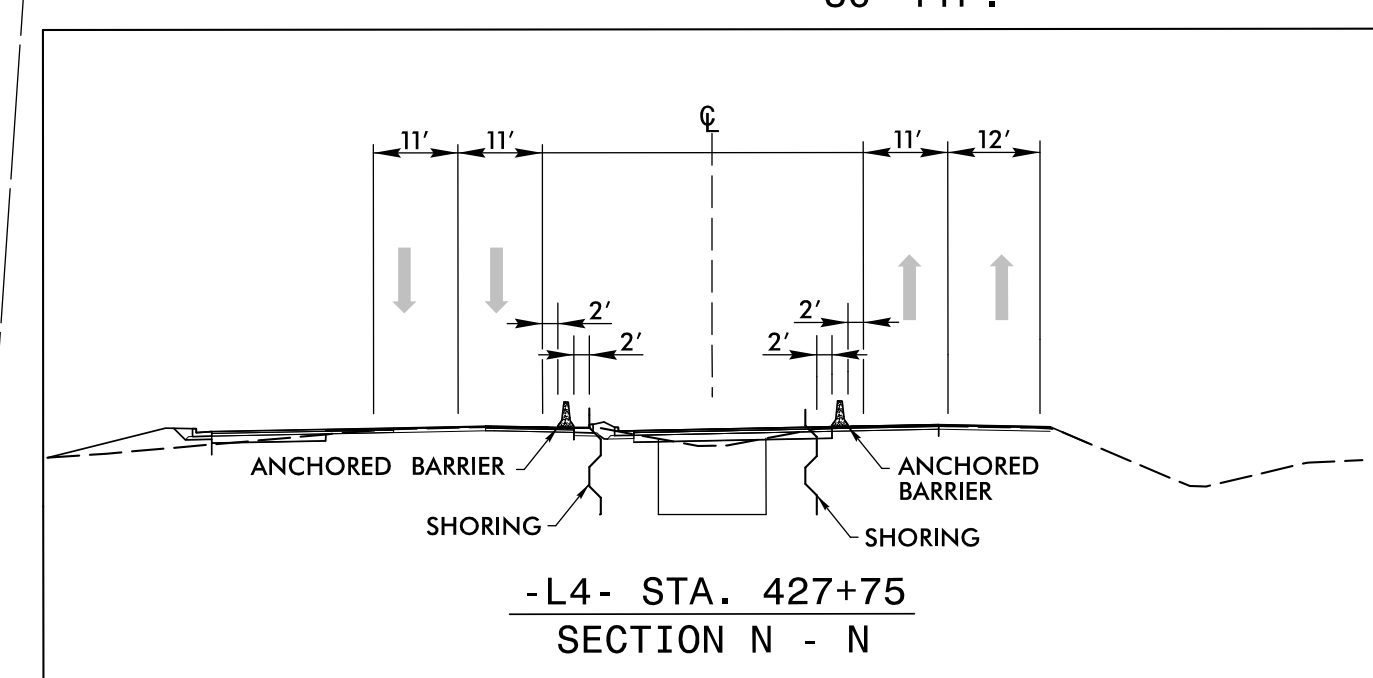


LENGTH = 335'



LENGTH = 335'

END TIP PROJECT W-5520
-L4- STA. 429+40.00



WSP | **PARSONS BRINCKERHOFF**
 Transportation & Infrastructure
 1001 Morehead Square Drive Suite 610 • Charlotte, NC 28203
 (T) 704.342.5401 • (F) 704.342.8472
 www.pbworld.com
 NC License Number: F-0165

APPROVED: *Eric W. Bowman* DATE: 2/10/2017

SEAL

DIVISION OF HIGHWAYS
STATE OF NORTH CAROLINA
DEPARTMENT OF TRANSPORTATION
WORK ZONE TRAFFIC CONTROL

AREA 4
PHASE I
DETAIL SHEET 16

2/10/2017 14:51:55 US74\TrafficControl\TCP\W5520_TC_TMP_Area 4-Phase1-2.dgn
 USEB04421