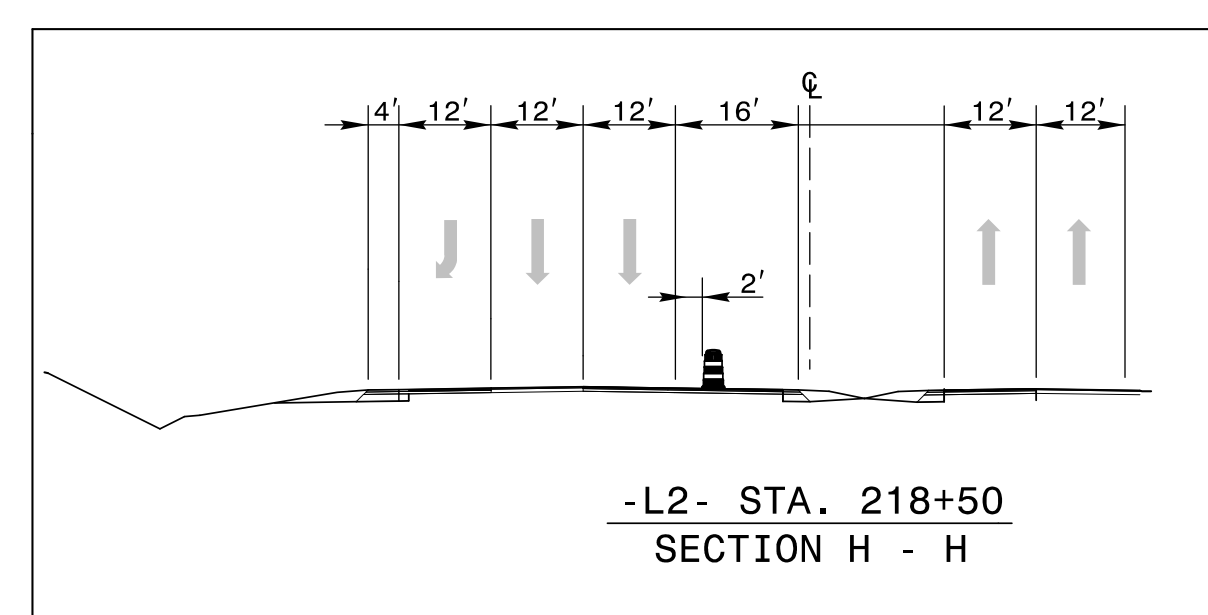
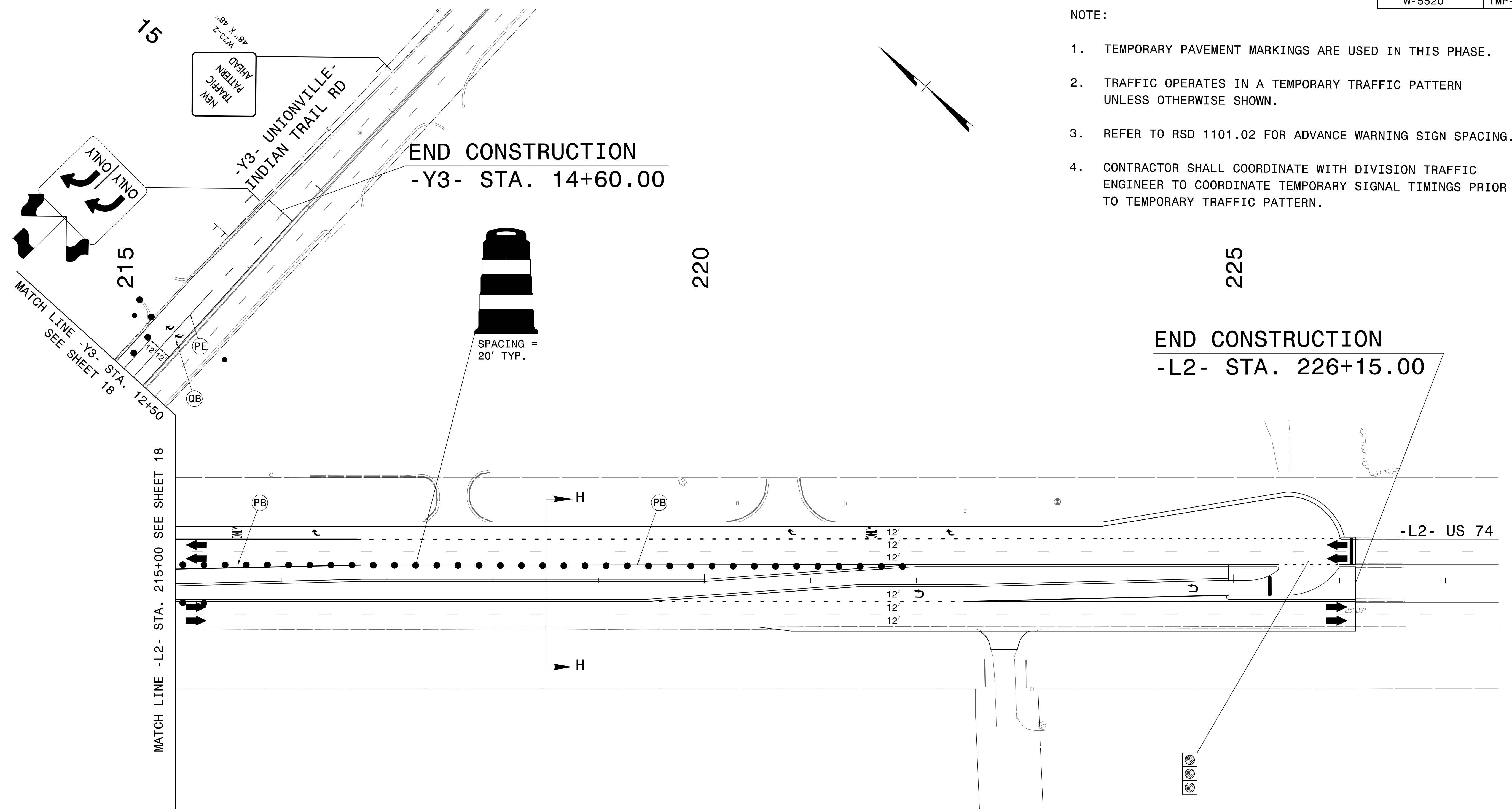


PROJ. REFERENCE NO.	SHEET NO.
W-5520	TMP-19

NOTE:

1. TEMPORARY PAVEMENT MARKINGS ARE USED IN THIS PHASE.
2. TRAFFIC OPERATES IN A TEMPORARY TRAFFIC PATTERN UNLESS OTHERWISE SHOWN.
3. REFER TO RSD 1101.02 FOR ADVANCE WARNING SIGN SPACING.
4. CONTRACTOR SHALL COORDINATE WITH DIVISION TRAFFIC ENGINEER TO COORDINATE TEMPORARY SIGNAL TIMINGS PRIOR TO TEMPORARY TRAFFIC PATTERN.



2/10/2017 14:41:55 US74\TrafficControl\TCP\W5520\_TC\_TMP\_Area 2-Phase3-2.dgn USEB04421

**WSP | PARSONS BRINCKERHOFF**  
 Transportation & Infrastructure  
 1001 Morehead Square Drive Suite 610 • Charlotte, NC 28203  
 (T) 704.342.5401 • (F) 704.342.8472  
 www.pbworld.com  
 NC License Number: F-0165

APPROVED: *Eric W. Bowman* DATE: 2/10/2017

SEAL

**AREA 2  
PHASE III  
DETAIL SHEET 10**