

PROJECT REFERENCE NO. W-5520	SHEET NO. 11
ROADWAY DESIGN ENGINEER NORTH CAROLINA PROFESSIONAL SEAL JAMES E. BECK 2/2/2017	HYDRAULICS ENGINEER NORTH CAROLINA PROFESSIONAL SEAL KARA STANSELL 2/3/2017

DOCUMENT NOT CONSIDERED FINAL UNLESS ALL SIGNATURES COMPLETED

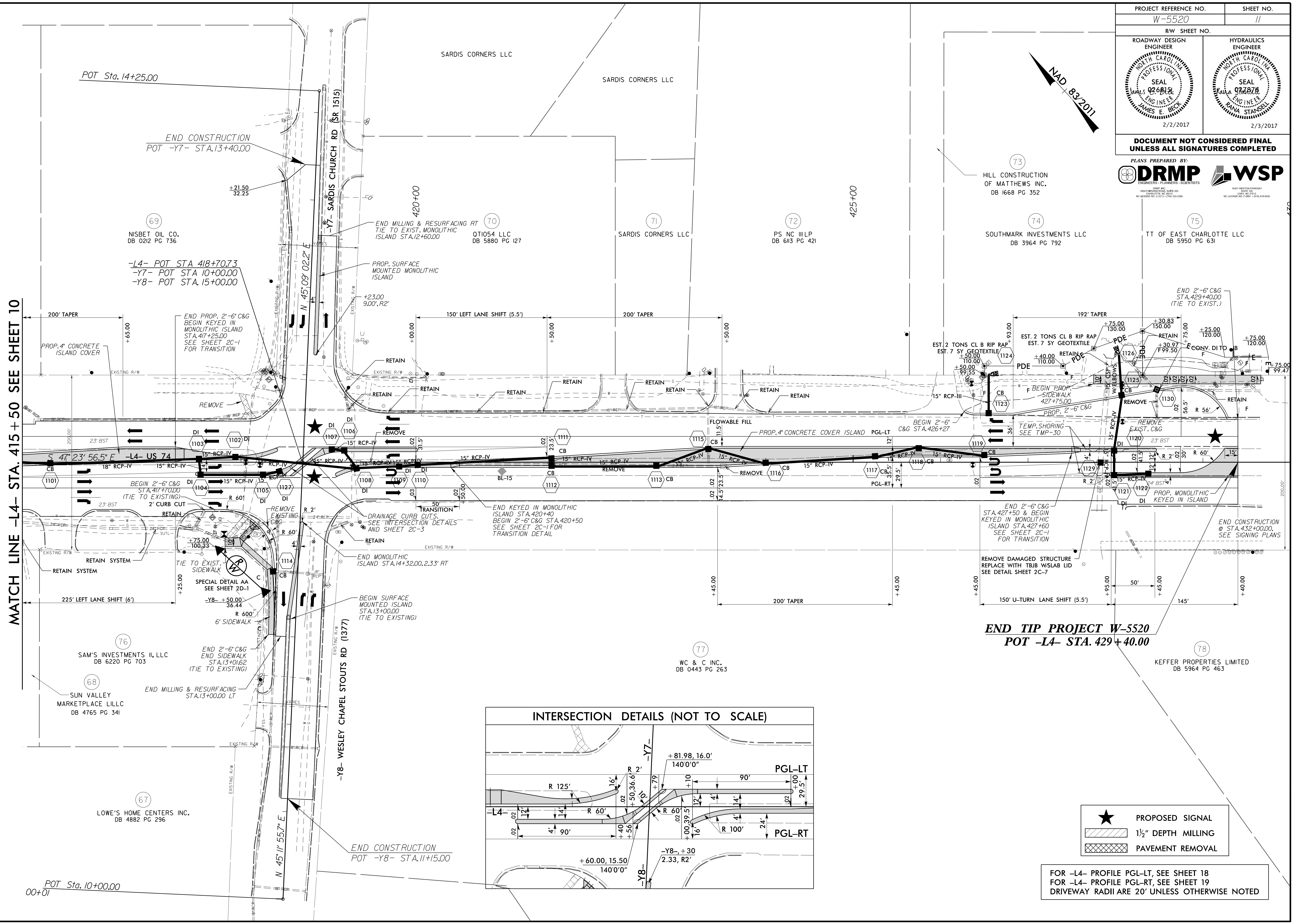
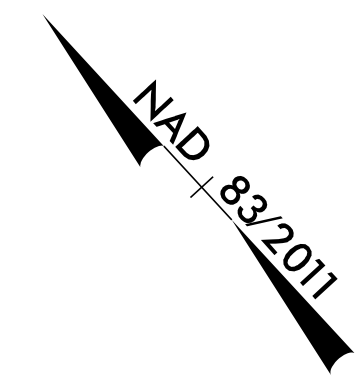
PLANS PREPARED BY:

DRMP WSP  
ENGINEERS - PLANNERS - SCIENTISTS

HILL CONSTRUCTION OF MATTHEWS INC. DB 1668 PG 352

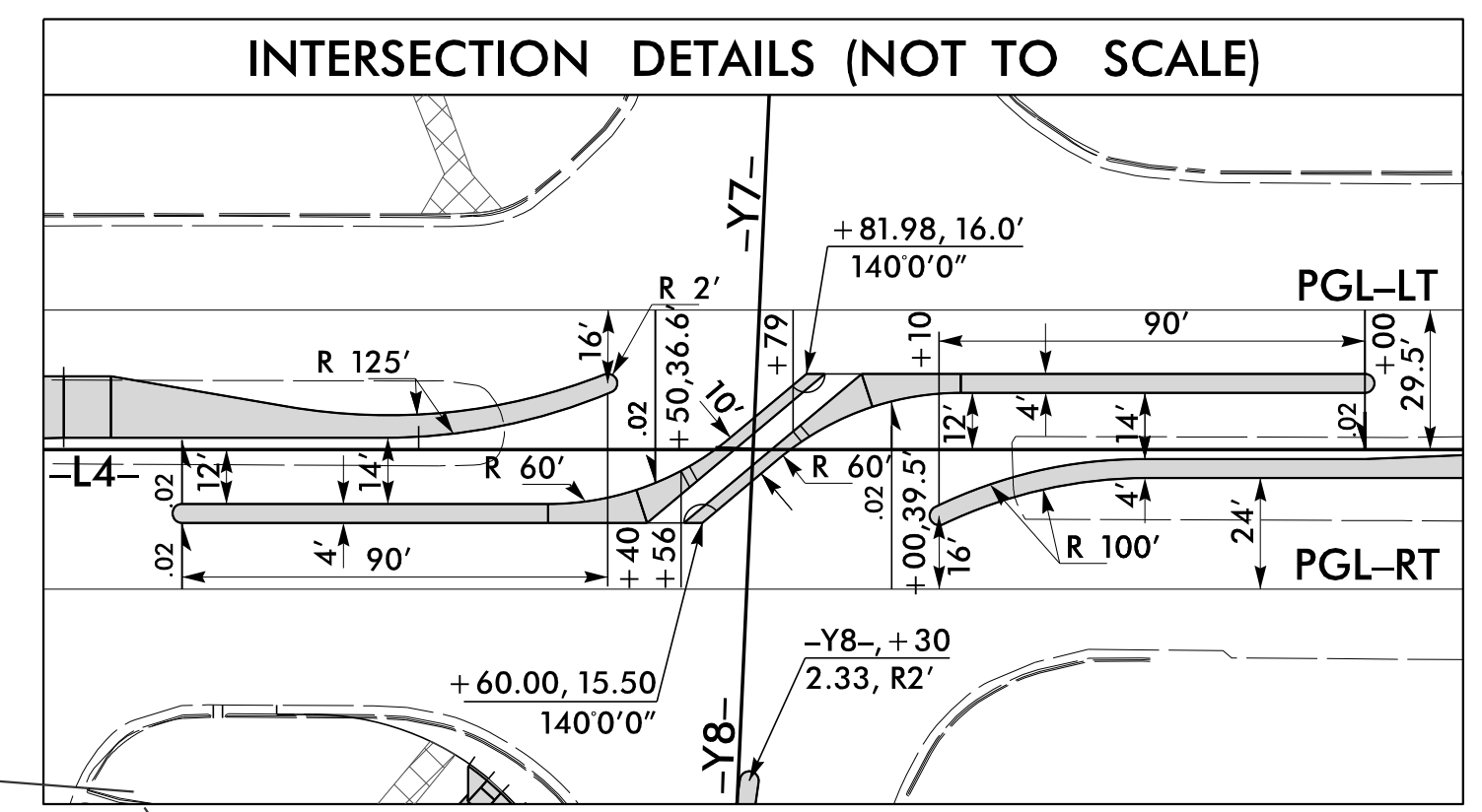
SOUTHMARK INVESTMENTS LLC DB 3964 PG 792

TT OF EAST CHARLOTTE LLC DB 5950 PG 631



MATCH LINE -L4- STA. 415+50 SEE SHEET 10

END TIP PROJECT W-5520  
POT -L4- STA. 429+40.00



- ★ PROPOSED SIGNAL
- ▨ 1 1/2" DEPTH MILLING
- ▩ PAVEMENT REMOVAL

FOR -L4- PROFILE PGL-LT, SEE SHEET 18  
FOR -L4- PROFILE PGL-RT, SEE SHEET 19  
DRIVEWAY RADII ARE 20' UNLESS OTHERWISE NOTED

REVISIONS

8/17/99

2/2/2017 9:32:36 AM  
N:\Roadway\Proj\W5520\_Rdy\_psh\_11.dgn