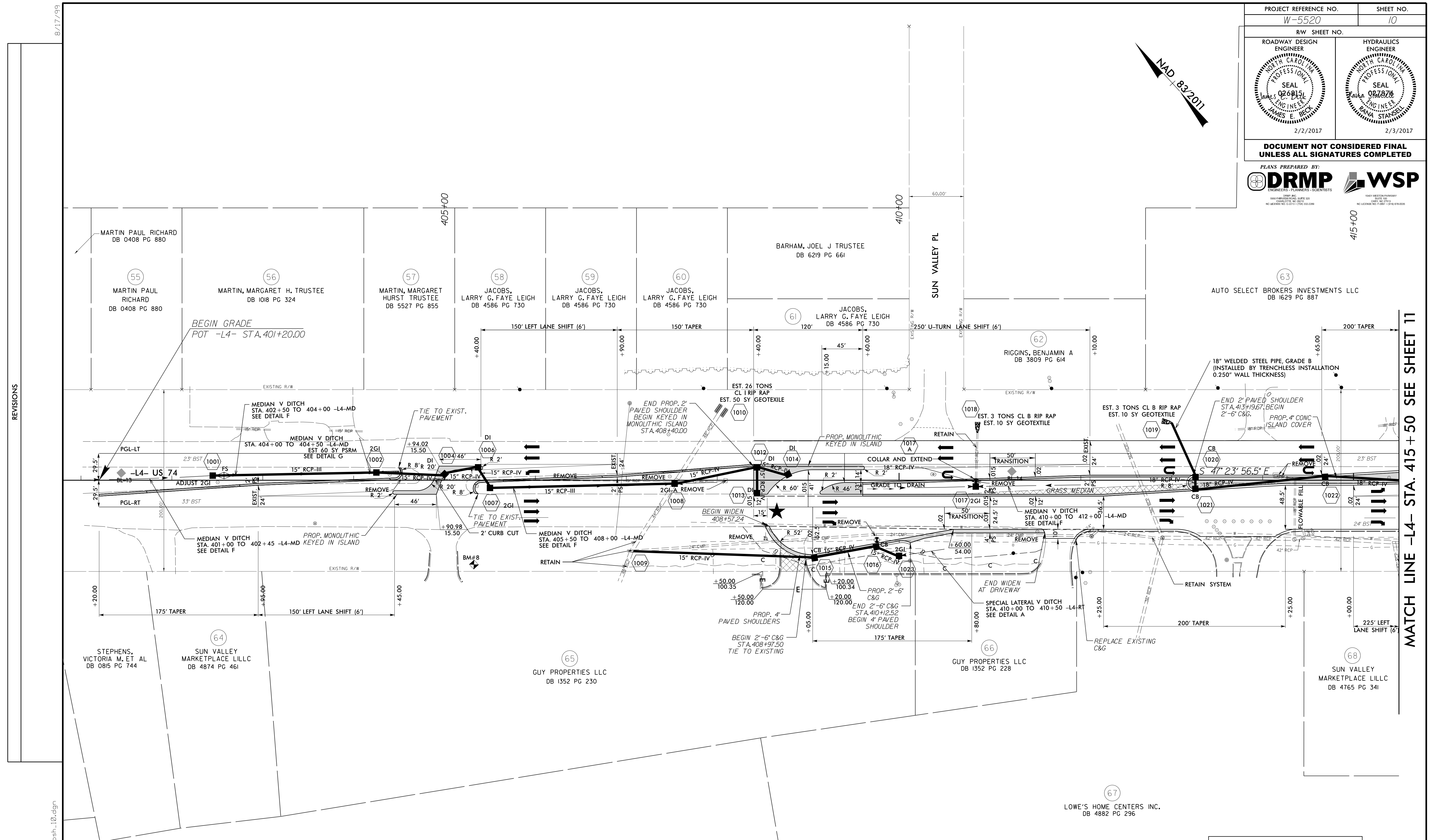
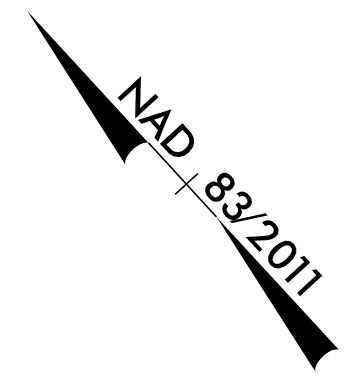
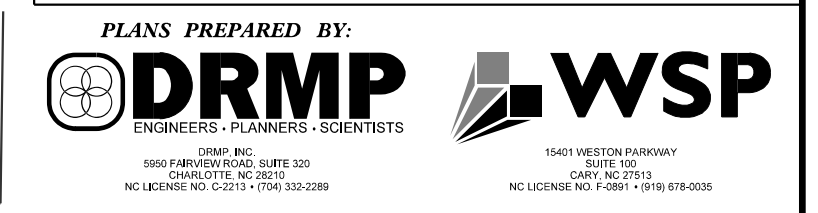


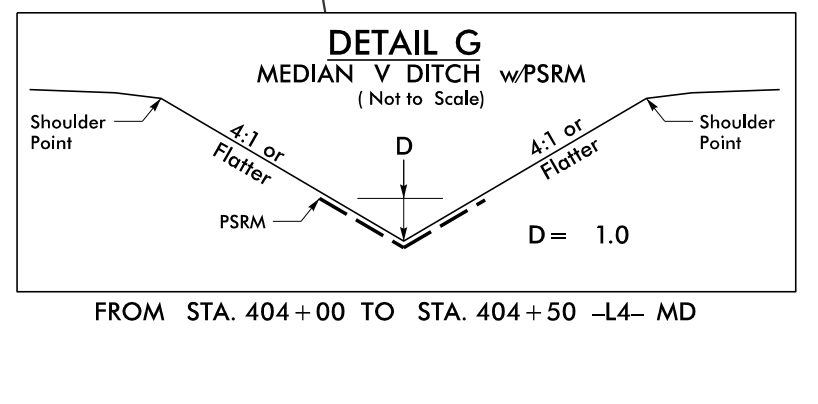
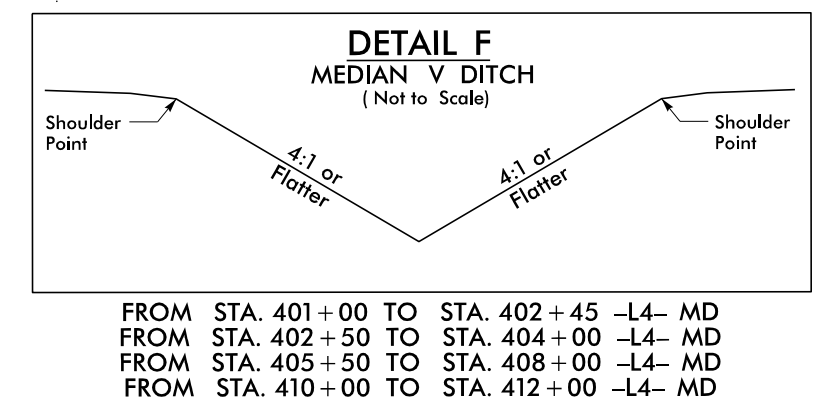
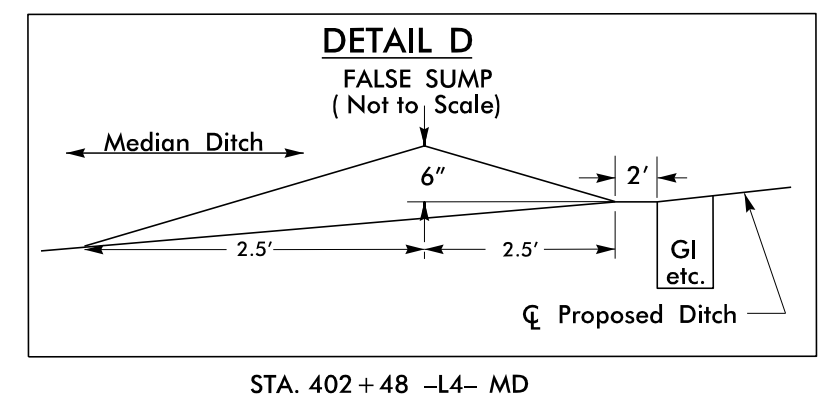
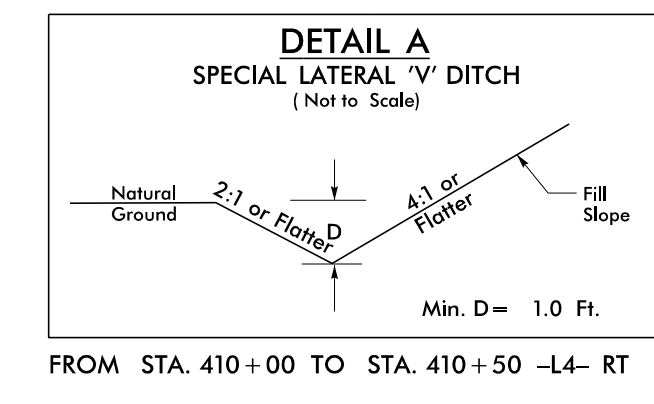
PROJECT REFERENCE NO. W-5520	SHEET NO. 10
RW SHEET NO.	
ROADWAY DESIGN ENGINEER NORTH CAROLINA PROFESSIONAL SEAL JAMES E. BECK 2/2/2017	HYDRAULICS ENGINEER NORTH CAROLINA PROFESSIONAL SEAL LANA STANSELL 2/3/2017

DOCUMENT NOT CONSIDERED FINAL UNLESS ALL SIGNATURES COMPLETED



REVISIONS

MATCH LINE -L4- STA. 415 + 50 SEE SHEET 11



- ★ PROPOSED SIGNAL
- ▨ 1 1/2" DEPTH MILLING
- ▩ PAVEMENT REMOVAL

FOR -L4- PROFILE PGL-LT, SEE SHEET 18
FOR -L4- PROFILE PGL-RT, SEE SHEET 19
DRIVEWAY RADII ARE 20' UNLESS OTHERWISE NOTED

12/7/2016 3:42:58 PM
N:\Roadway\Proj\W5520_Rdy_psh_10.dgn