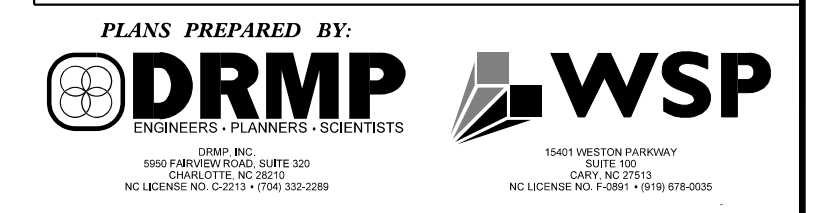
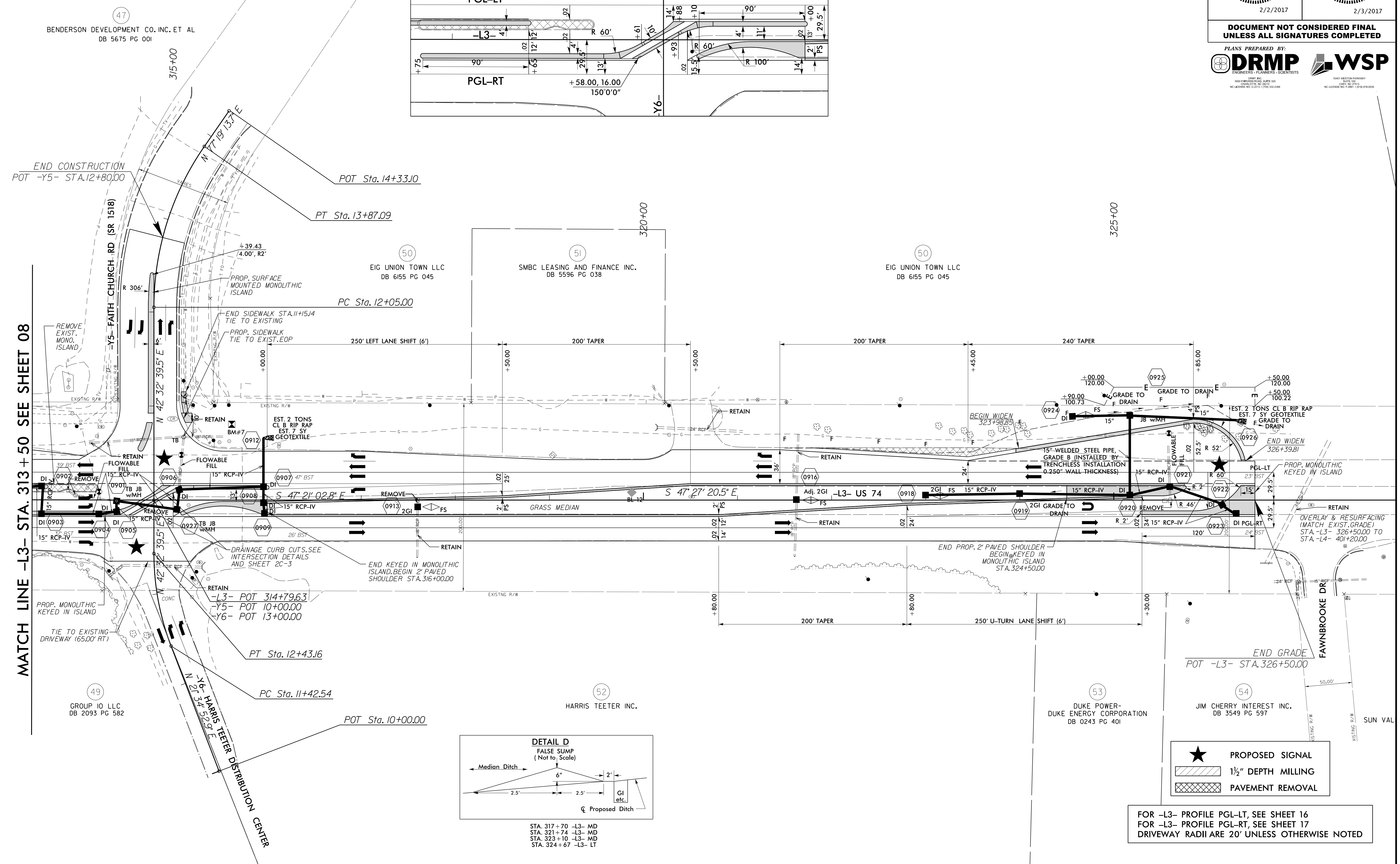
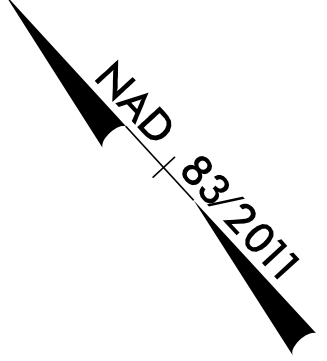
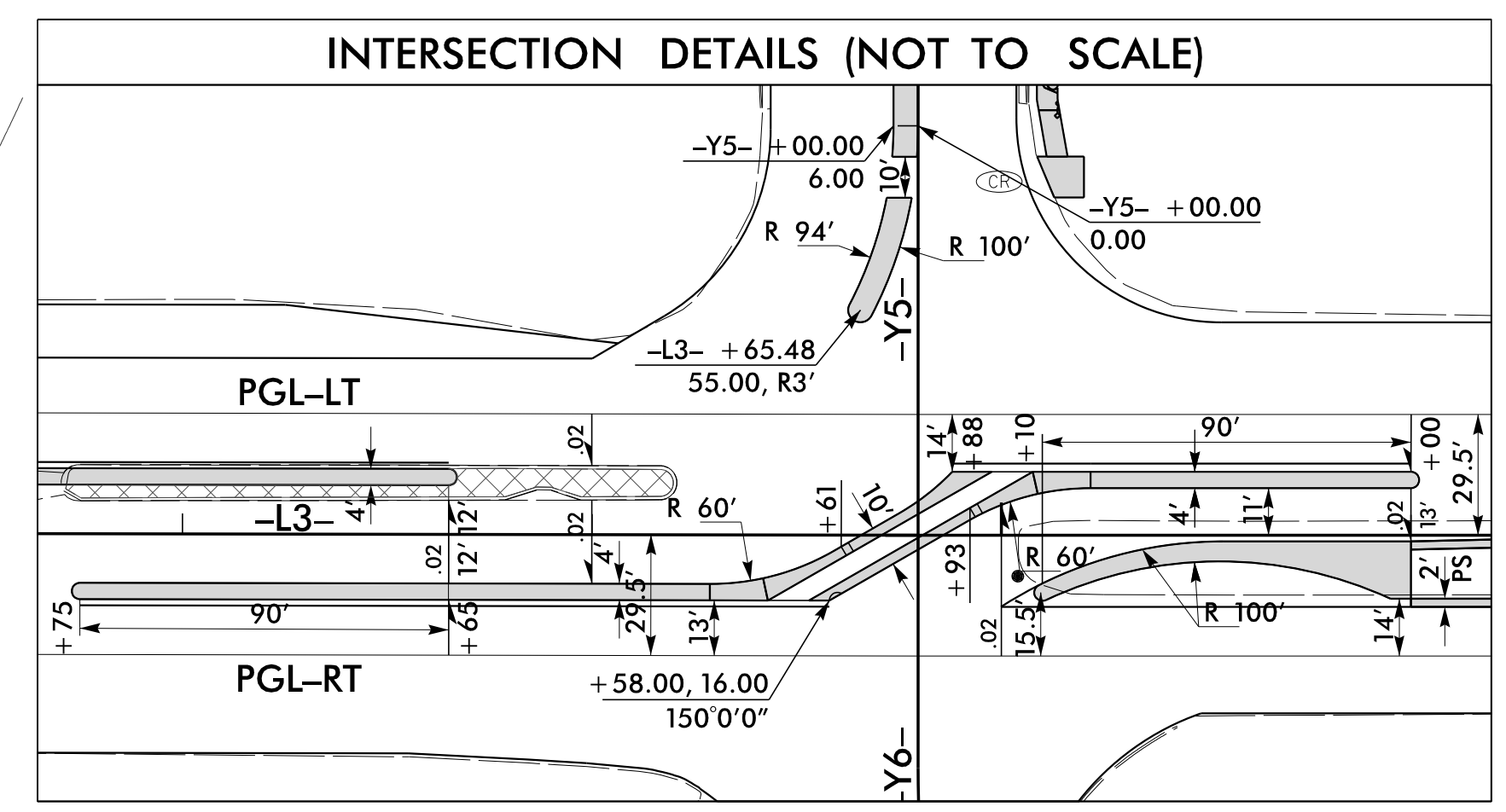


PROJECT REFERENCE NO. W-5520	SHEET NO. 09
RW SHEET NO.	
ROADWAY DESIGN ENGINEER NORTH CAROLINA PROFESSIONAL SEAL 2/2/2017	HYDRAULICS ENGINEER NORTH CAROLINA PROFESSIONAL SEAL 2/3/2017

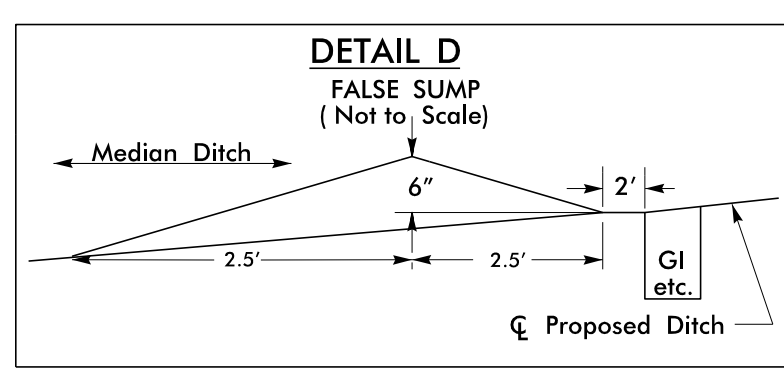
DOCUMENT NOT CONSIDERED FINAL
UNLESS ALL SIGNATURES COMPLETED



-Y5-	-Y6-
PI Sta 12+98.95	PI Sta 11+93.42
$\Delta = 34^\circ 46' 34.2''$ (RT)	$\Delta = 20^\circ 57' 46.6''$ (RT)
$D = 19^\circ 05' 54.9''$	$D = 20^\circ 50' 05.4''$
$L = 182.09'$	$L = 100.61'$
$T = 93.95'$	$T = 50.88'$
$R = 300.00'$	$R = 275.00'$
$e =$ EXISTING	$e =$ EXISTING



MATCH LINE -L3- STA. 313 + 50 SEE SHEET 08



STA. 317+70 -L3- MD
 STA. 321+74 -L3- MD
 STA. 323+10 -L3- MD
 STA. 324+67 -L3- LT

- ★ PROPOSED SIGNAL
- ▨ 1 1/2" DEPTH MILLING
- ▩ PAVEMENT REMOVAL

FOR -L3- PROFILE PGL-LT, SEE SHEET 16
 FOR -L3- PROFILE PGL-RT, SEE SHEET 17
 DRIVEWAY RADII ARE 20' UNLESS OTHERWISE NOTED

REVISIONS

8/17/99

12/7/2016 3:47:54 PM
 N:\Roadway\Proj\W5520_Rdy_psh_09.dgn