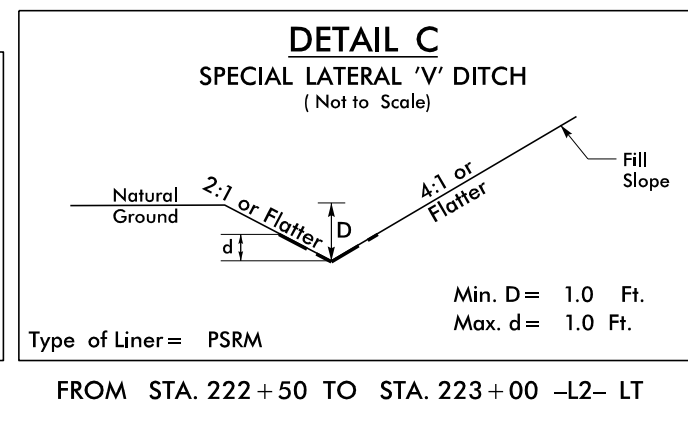
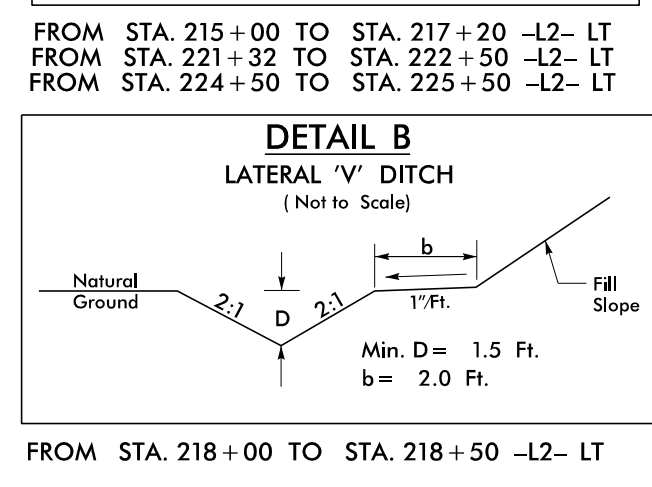
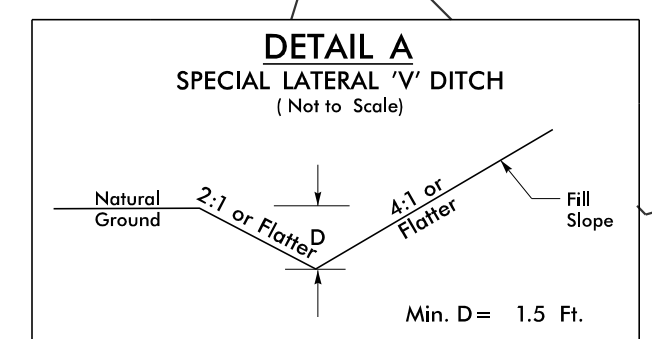
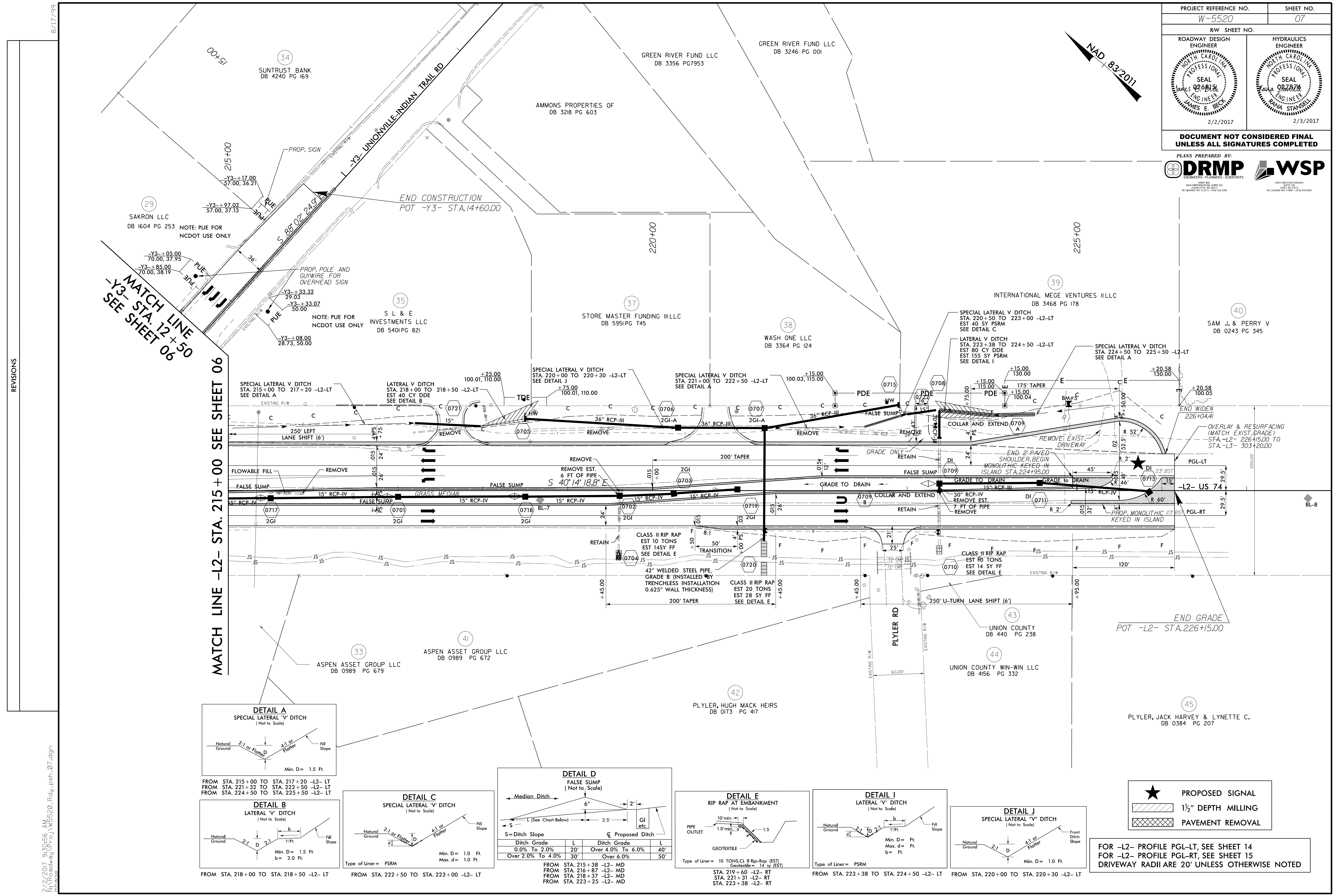


| | |
|--|--|
| PROJECT REFERENCE NO. W-5520 | SHEET NO. 07 |
| RW SHEET NO. | |
| ROADWAY DESIGN ENGINEER NORTH CAROLINA PROFESSIONAL SEAL JAMES E. BECK 2/2/2017 | HYDRAULICS ENGINEER NORTH CAROLINA PROFESSIONAL SEAL RANA STANSELL 2/3/2017 |

DOCUMENT NOT CONSIDERED FINAL
UNLESS ALL SIGNATURES COMPLETED

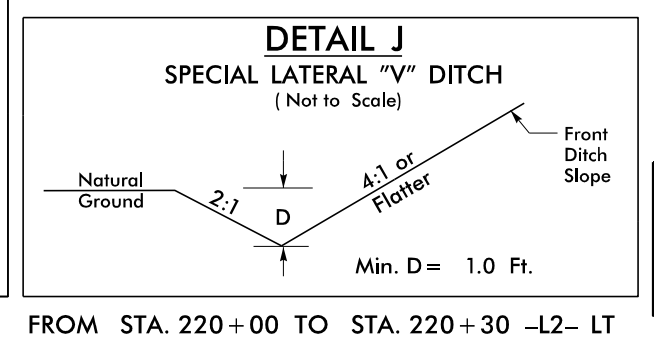
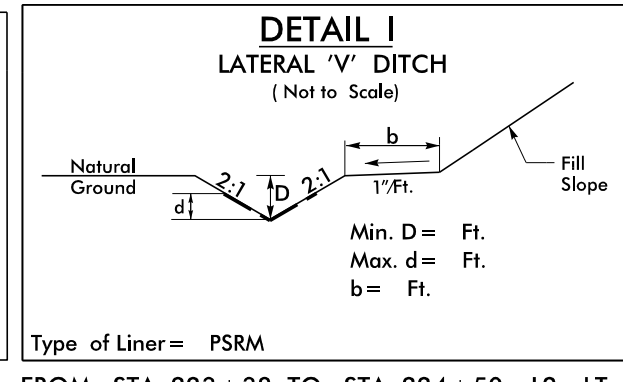
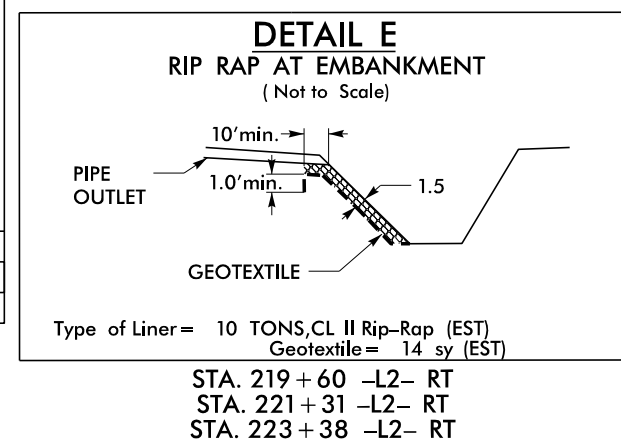
PLANS PREPARED BY:



DETAIL D
FALSE SUMP
(Not to Scale)

| Ditch Grade | L | Ditch Grade | L |
|-------------------|-----|-------------------|-----|
| 0.0% To 2.0% | 20' | Over 4.0% To 6.0% | 40' |
| Over 2.0% To 4.0% | 30' | Over 6.0% | 50' |

FROM STA. 215+38 -L2- MD
FROM STA. 216+87 -L2- MD
FROM STA. 218+37 -L2- MD
FROM STA. 223+25 -L2- MD



★ PROPOSED SIGNAL

▨ 1 1/2" DEPTH MILLING

▩ PAVEMENT REMOVAL

FOR -L2- PROFILE PGL-LT, SEE SHEET 14
FOR -L2- PROFILE PGL-RT, SEE SHEET 15
DRIVEWAY RADII ARE 20' UNLESS OTHERWISE NOTED

REVISIONS

8/17/99
 2/2/2017 9:30:56 AM
 N:\Roadway\Proj\W5520_Rdy_psh_07.dgn