



PROJECT REFERENCE NO. W-5520	SHEET NO. 04
RW SHEET NO.	
ROADWAY DESIGN ENGINEER JAMES E. BECK NORTH CAROLINA PROFESSIONAL SEAL 026018 2/2/2017	HYDRAULICS ENGINEER KANA STANBEL NORTH CAROLINA PROFESSIONAL SEAL 026826 2/3/2017

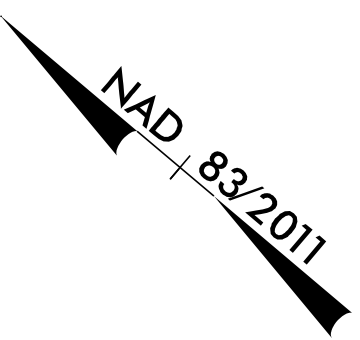
DOCUMENT NOT CONSIDERED FINAL UNLESS ALL SIGNATURES COMPLETED

PLANS PREPARED BY:

DRMP INC. ENGINEERS - PLANNERS - SCIENTISTS
15401 HUNTERS HOLLOWAY CARY, NC 27513
NC LICENSE NO. C-0215-1774-200-0288

WSP INC. ENGINEERS - PLANNERS - SCIENTISTS
15401 HUNTERS HOLLOWAY CARY, NC 27513
NC LICENSE NO. F-0891-1774-200-0288



④ SF PROPERTIES 3 LLC
DB 5568 PG 166

100+00

105+00

110+00

① GRIFFIN LAND HOLDINGS LLC
DB 3454 PG 668

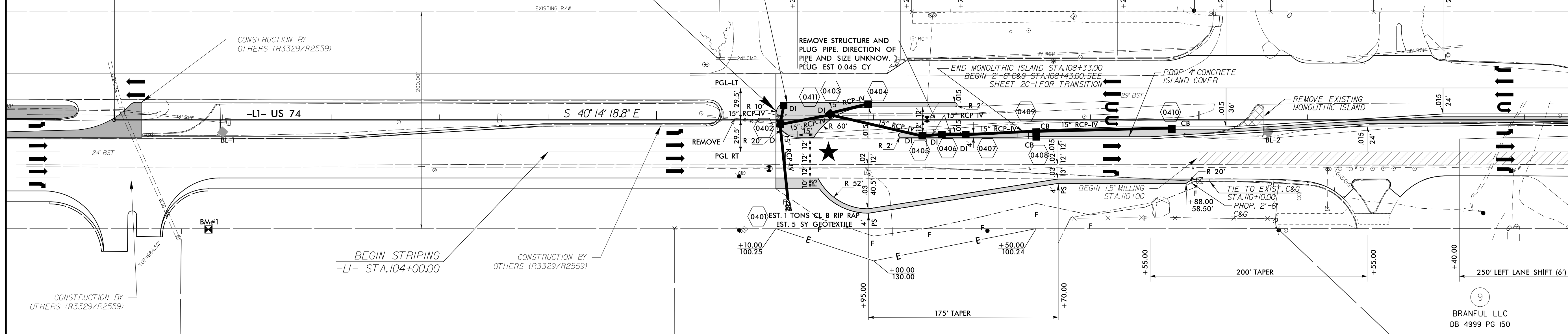
② ROGERS DENNIS J. & WIFE PHYLLIS P.
DB 0444 PG 857

③ COOK OUT INDIAN TRAIL ET AL
DB 4831 PG 446

⑤ HILLCREST FOOD INC.
DB 0874 PG 0456

⑥ ARC CAFEHLD0001LLC
DB 6049 PG 201

**BEGIN TIP PROJECT W-5520
POT -L1- STA. 106+10.00**



**BEGIN STRIPING
-L1- STA. 104+00.00**


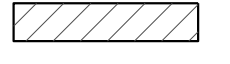
CONSTRUCTION BY OTHERS (R3329/R2559)

CONSTRUCTION BY OTHERS (R3329/R2559)

⑦ LEMMOND, MARY D. BIVENS HEIRS

⑧ LEMMOND, REA NELSON
DB 877 PG 179

⑨ BRANFUL LLC
DB 4999 PG 150

-  PROPOSED SIGNAL
-  1 1/2\"/>

FOR -L1- PROFILE PGL-LT, SEE SHEET 12
FOR -L1- PROFILE PGL-RT, SEE SHEET 13
DRIVEWAY RADII ARE 20' UNLESS OTHERWISE NOTED

REVISIONS

MATCH LINE -L1- STA. 113+50 SEE SHEET 05

8/17/99

12/20/2016 4:49:56 PM
N:\Projects\16-04\16-04-W5520-Rdy_psh_04.dgn