

**This electronic collection of documents is provided
for the convenience of the user
and is Not a Certified Document –**

**The documents contained herein were originally issued
and sealed by the individuals whose names and license
numbers appear on each page, on the dates appearing
with their signature on that page.**

**This file or an individual page
shall not be considered a certified document.**

09/08/99
 \$\$\$SYTIME\$\$\$\$\$
 \$\$\$DDGN\$\$\$\$\$
 \$\$\$USERNAME\$\$\$\$\$

TIP PROJECT: I-5000

STATE OF NORTH CAROLINA
 DIVISION OF HIGHWAYS

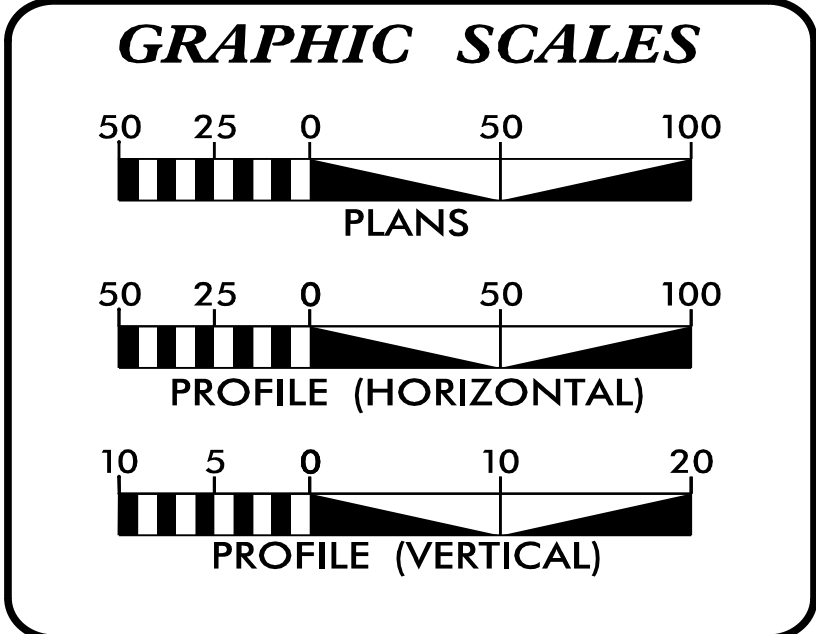
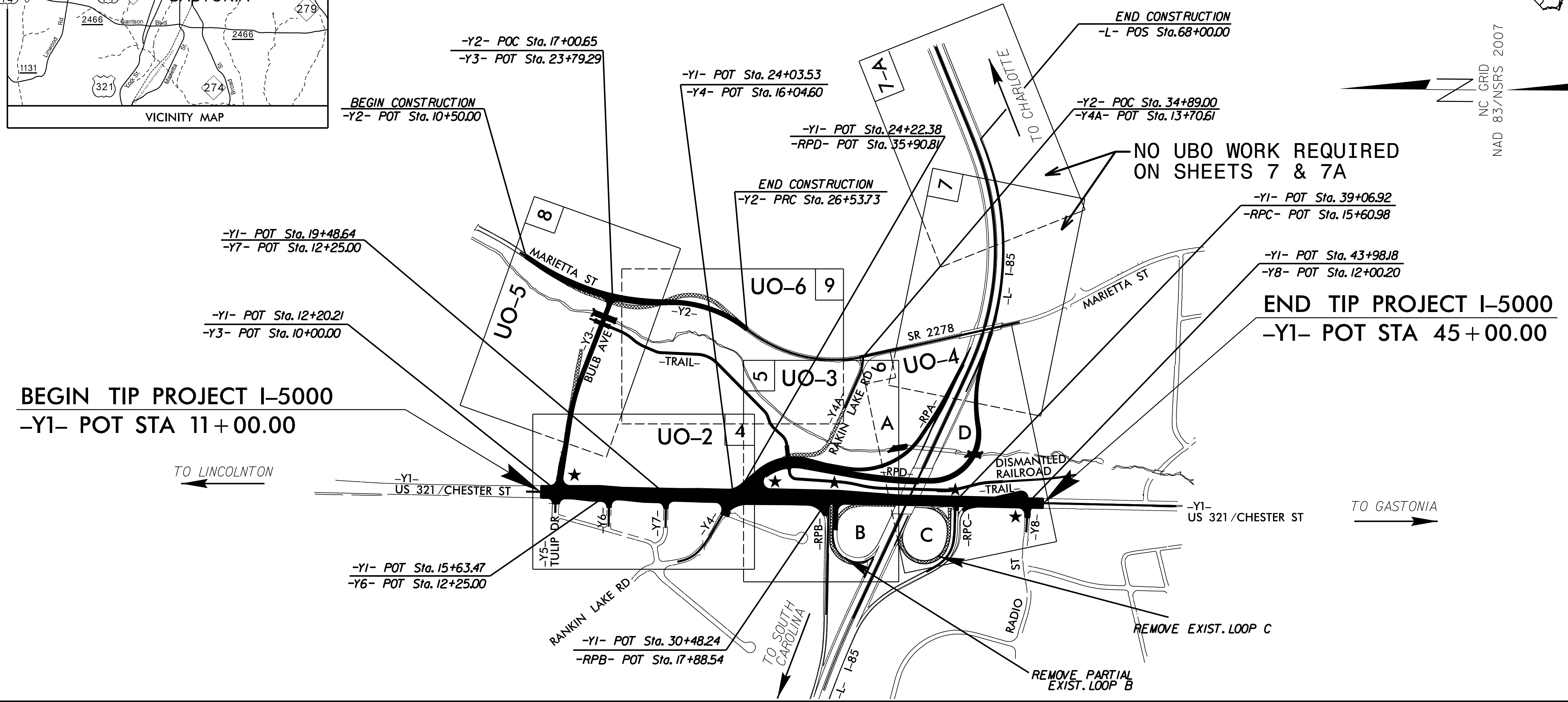
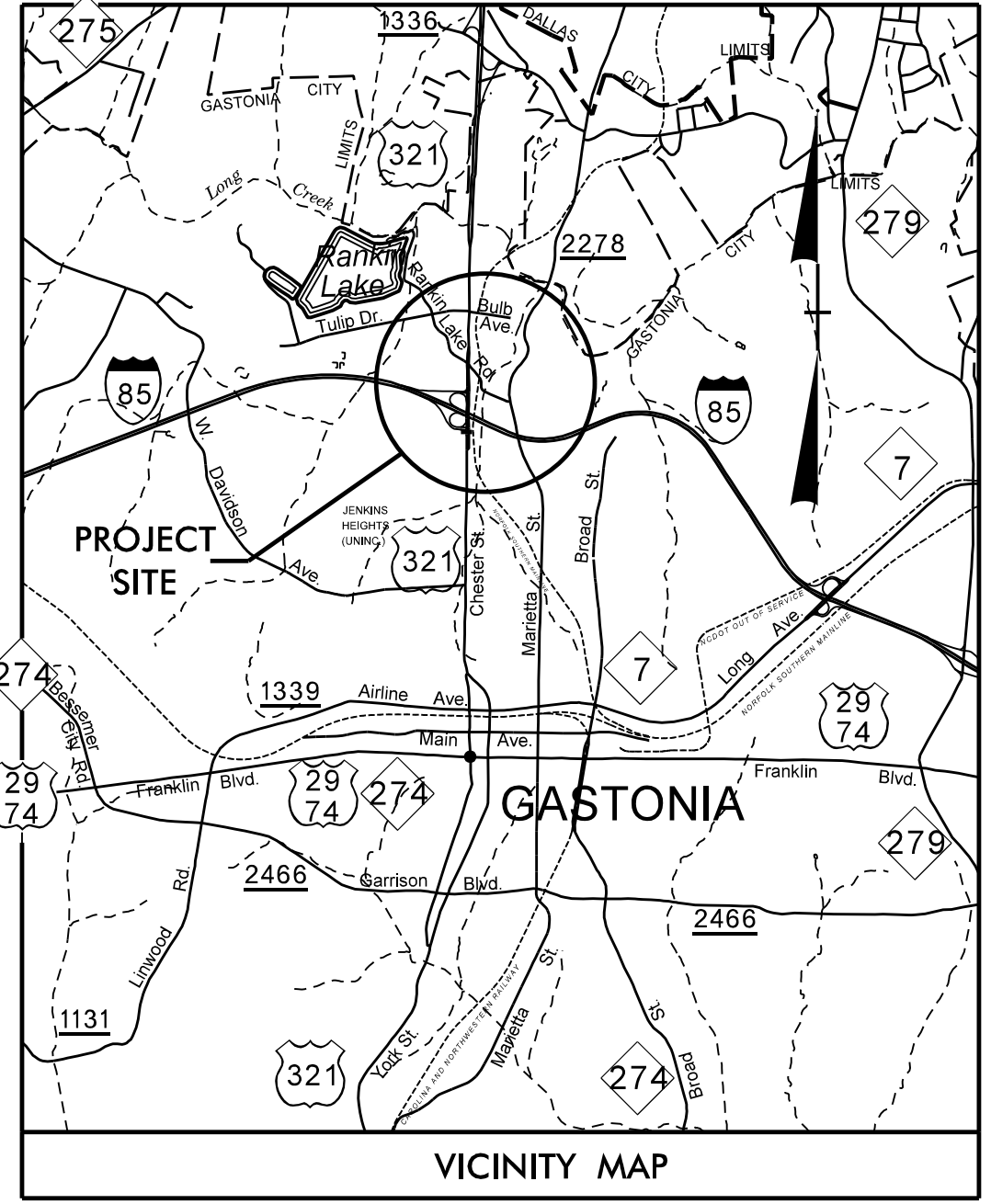
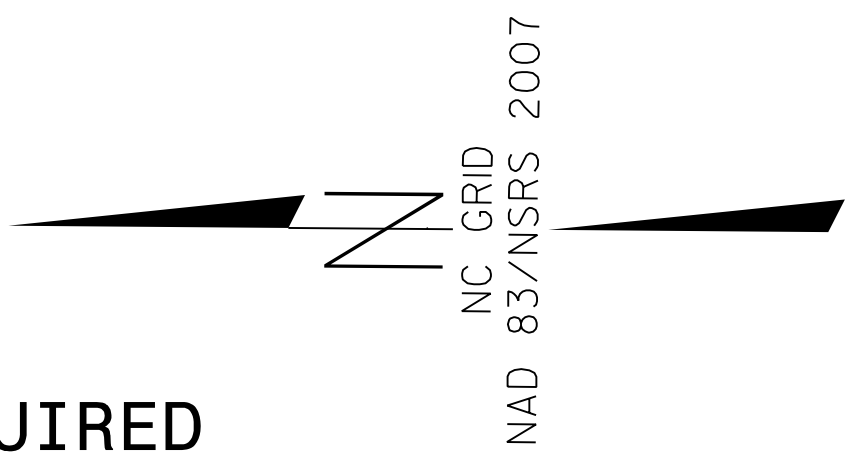
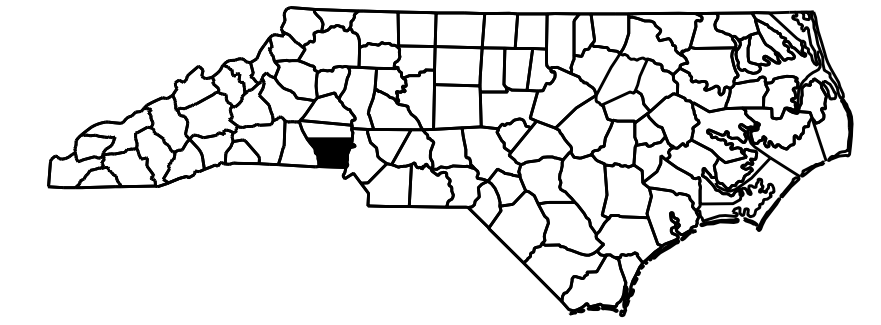
**UTILITIES BY OTHERS PLANS
 GASTON COUNTY**

LOCATION: I-85/US 321 GEOMETRIC SAFETY
 IMPROVEMENTS TO INTERCHANGE

TYPE OF WORK: TRANSMISSION & DISTRIBUTION POWER,
 GAS & TELECOMMUNICATION RELOCATION

T.I.P. NO.	SHEET NO.
I-5000	UO-1

NOTE:
 ALL UTILITY WORK SHOWN ON THIS SHEET IS DONE BY OTHERS.
 NO PAYMENT WILL BE MADE TO THE CONTRACTOR FOR UTILITY WORK SHOWN ON THIS SHEET.



INDEX OF SHEETS

SHEET NO.:	DESCRIPTION:
UO-1	TITLE SHEET
UO-02 THRU UO-06	UBO PLAN SHEETS

UTILITY OWNERS WITH CONFLICTS

(A) TELECOMMUNICATIONS - AT&T
 (B) POWER TRANSMISSION - DUKE ENERGY PROGRESS
 (C) POWER DISTRIBUTION - DUKE ENERGY PROGRESS
 (D) POWER - CITY OF GASTONIA
 (E) GAS - PSNC ENERGY
 (F) CATV - TIME WARNER CABLE

PREPARED IN THE OFFICE OF:

SO-DEEP | SAM NC

SO-DEEP | SAM NC, Inc.
 A SAM COMPANY
 2800-154 Sumner Boulevard, Raleigh, NC 27616 Tel 919-878-7466

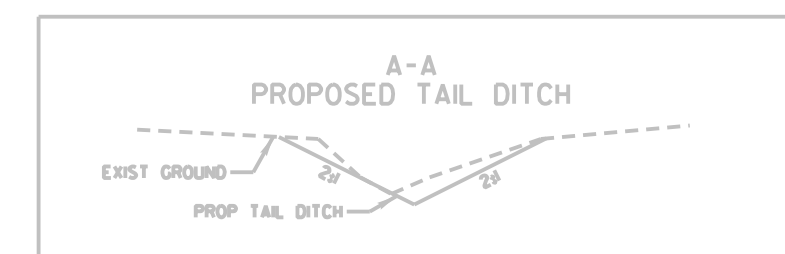
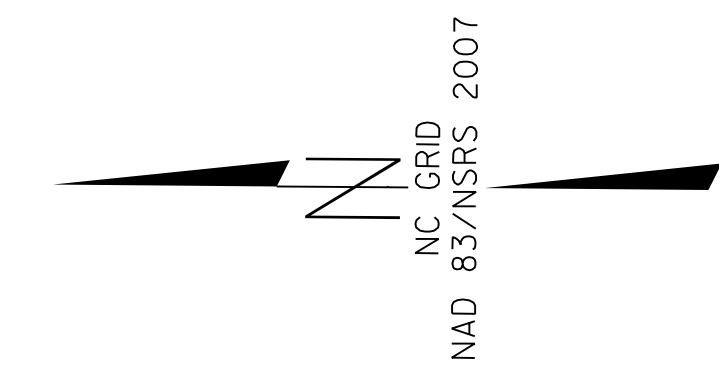
Keith Garry UTILITY PROJECT MANAGER
 Dave Hale PROJECT UTILITY COORDINATOR

**DIVISION OF HIGHWAYS
 UTILITIES UNIT**
 1555 MAIL SERVICES CENTER
 RALEIGH NC 27699-1555
 PHONE (919) 707-6690
 FAX (919) 250-4151

Carl Barclay, PE UTILITIES REGIONAL ENGINEER
 James E. Swinson UTILITIES ENGINEER
 Amy Dupree UTILITIES AREA COORDINATOR
 Greg Sealy UTILITIES COORDINATOR

UTILITIES BY OTHERS

NOTE:
 ALL UTILITY WORK SHOWN ON THIS SHEET WILL BE DONE BY OTHERS. NO PAYMENT WILL BE MADE TO THE CONTRACTOR FOR UTILITY WORK SHOWN ON THIS SHEET.

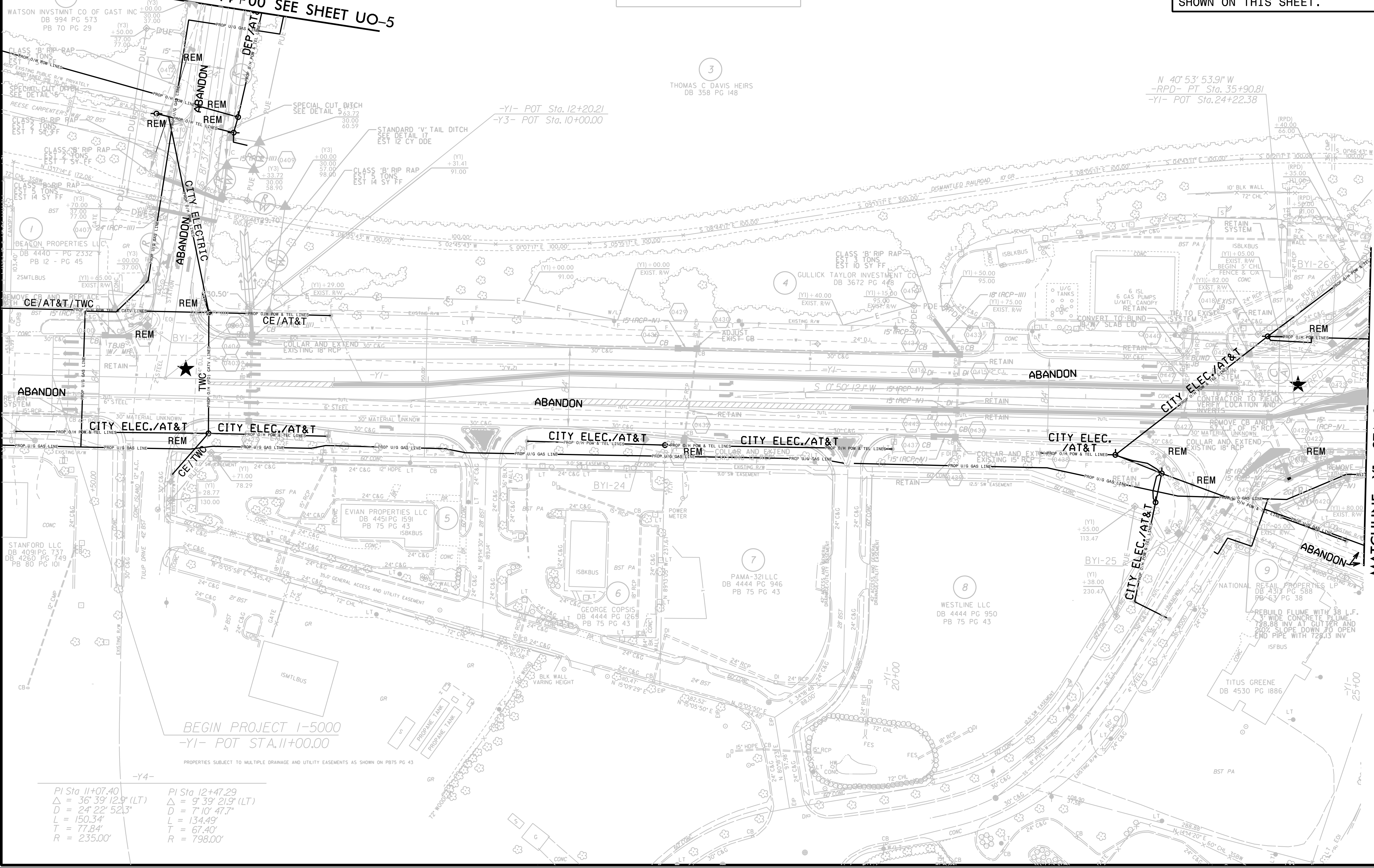


MATCHLINE -Y3- STA. 14+00 SEE SHEET UO-5

-Y1- POT Sta. 12+20.21
 -Y3- POT Sta. 10+00.00

N 40° 53' 53.9" W
 -RPD- PT Sta. 35+90.81
 -Y1- POT Sta. 24+22.38

MATCHLINE -Y1- STA. 25+00 SEE SHEET UO-3



PI Sta 11+07.40	PI Sta 12+47.29
$\Delta = 36^{\circ} 39' 12.9" (LT)$	$\Delta = 9^{\circ} 39' 21.9" (LT)$
$D = 24^{\circ} 22' 52.3"$	$D = 7^{\circ} 10' 47.7"$
$L = 150.34'$	$L = 134.49'$
$T = 77.84'$	$T = 67.40'$
$R = 235.00'$	$R = 798.00'$

BEGIN PROJECT I-5000
 -Y1- POT STA. 11+00.00

PROPERTIES SUBJECT TO MULTIPLE DRAINAGE AND UTILITY EASEMENTS AS SHOWN ON PB75 PG 43

5/14/09
 STANFORD LLC DB 4091 PG 737
 DB 4260 PG 749
 PB 80 PG 101
 TITUS GREENE DB 4530 PG 1886

