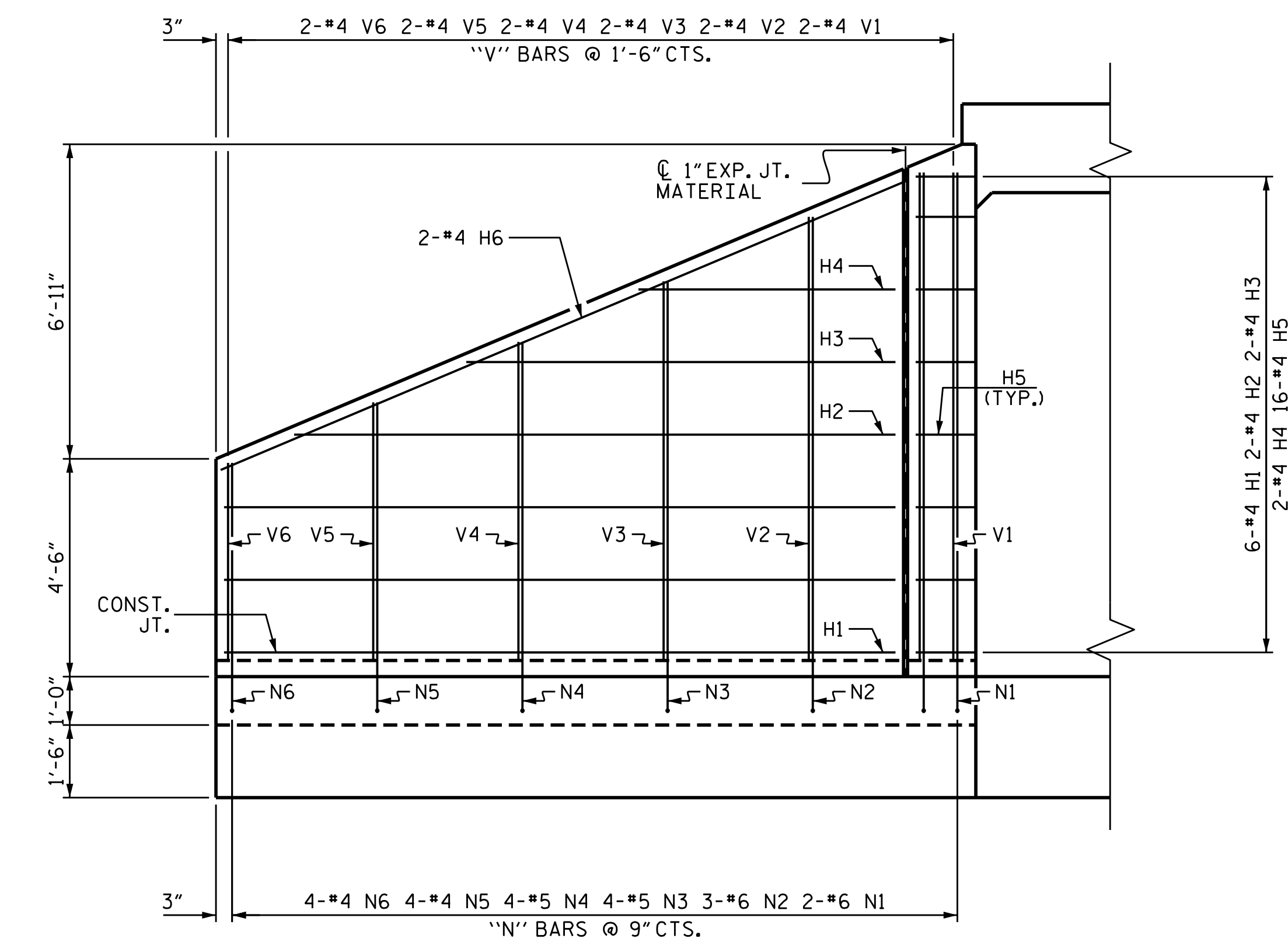
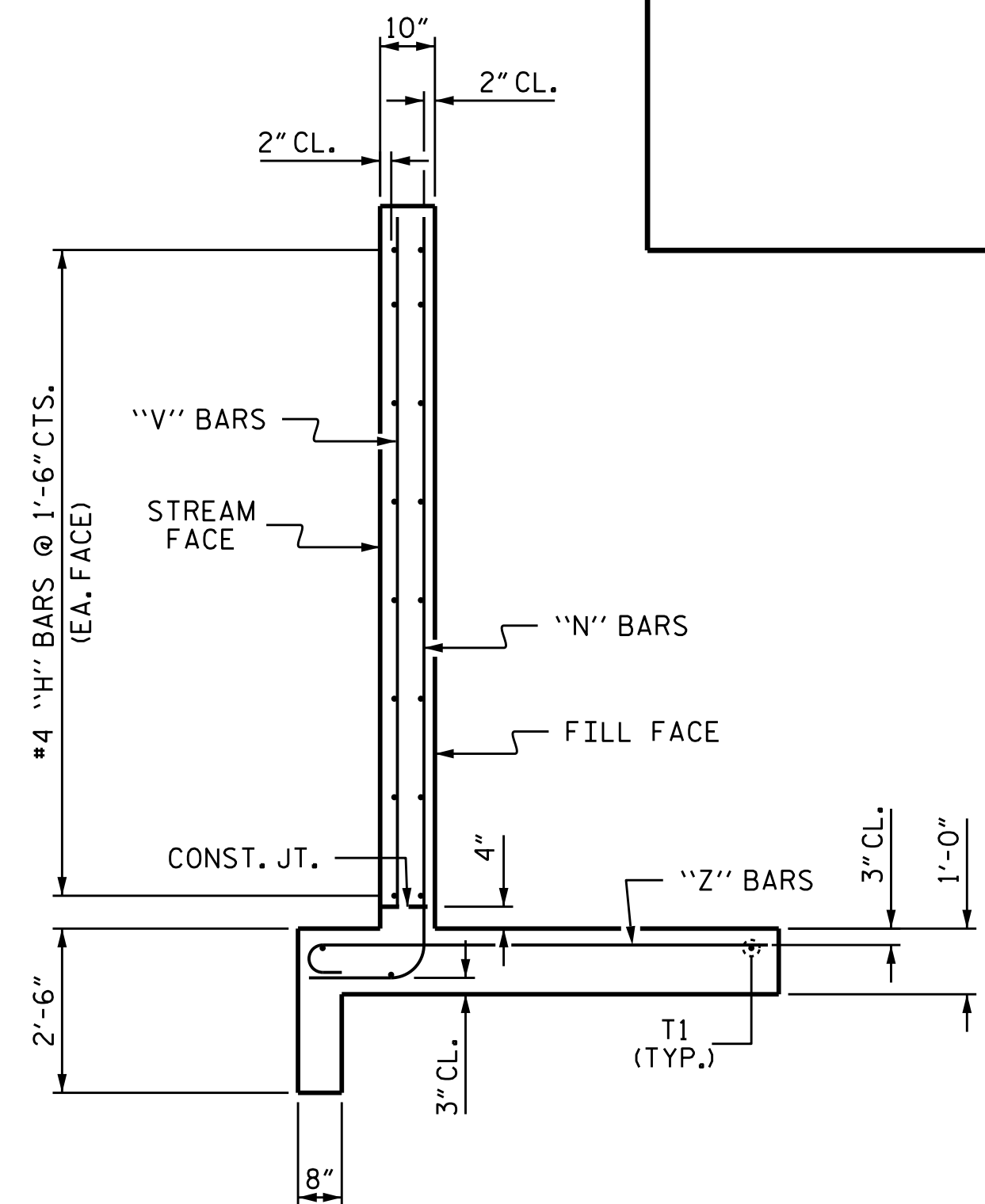


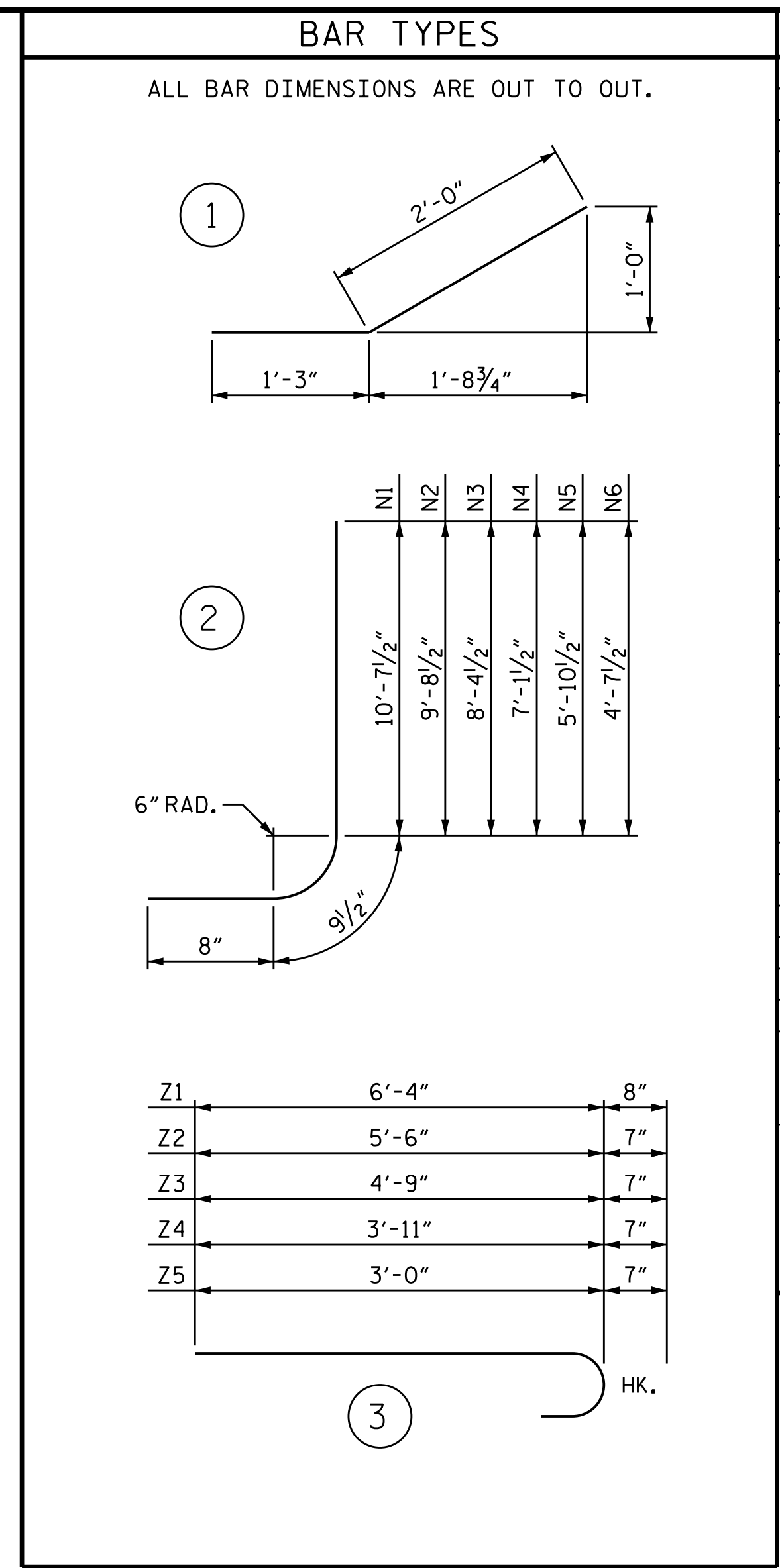
PLAN



ELEVATION



TYPICAL WING SECTION



BAR TYPES				BILL OF MATERIAL		
BAR NO.	NO.	SIZE	TYPE	LENGTH	WEIGHT	
H1	24	#4	STR	13'-10"	222	
H2	8	#4	STR	12'-5"	66	
H3	8	#4	STR	8'-10"	47	
H4	8	#4	STR	5'-4"	29	
H5	64	#4	1	3'-3"	139	
H6	8	#4	STR	15'-5"	82	
N1	8	#6	2	12'-1"	146	
N2	12	#6	2	11'-2"	201	
N3	16	#5	2	9'-10"	164	
N4	16	#5	2	8'-7"	143	
N5	16	#4	2	7'-4"	78	
N6	16	#4	2	6'-1"	65	
S1	12	#6	STR	6'-0"	108	
T1	12	#5	STR	15'-9"	197	
V1	8	#4	STR	10'-1"	54	
V2	8	#4	STR	9'-2"	49	
V3	8	#4	STR	7'-10"	42	
V4	8	#4	STR	6'-7"	35	
V5	8	#4	STR	5'-4"	29	
V6	8	#4	STR	4'-1"	22	
Z1	16	#6	3	7'-0"	168	
Z2	16	#5	3	6'-1"	102	
Z3	16	#5	3	5'-4"	89	
Z4	16	#5	3	4'-6"	75	
Z5	20	#5	3	3'-7"	75	
REINFORCING STEEL FOR 4 WINGS					2427 LBS	
CLASS A CONCRETE						
4 WINGS					31.2	CY
2 HEADWALLS					1.5	CY
END CURTAIN WALLS					1.5	CY
TOTAL					34.2	CY

ASSEMBLED BY : H. T. BARBOUR DATE : 8-15-16
 CHECKED BY : A. M. LEE DATE : 9-28-16
 DRAWN BY : CCJ 10/99
 CHECKED BY : RWW 03/00

DOCUMENT NOT CONSIDERED FINAL UNLESS ALL SIGNATURES COMPLETED

PROJECT NO. I-5000
GASTON COUNTY
 STATION: 21+83.98 -Y3-

SHEET 4 OF 4
 STATE OF NORTH CAROLINA
 DEPARTMENT OF TRANSPORTATION
 RALEIGH
STANDARD WINGS FOR CONCRETE BOX CULVERT
 H = 10'-0" SLOPE = 2:1
 90° SKEW

REVISIONS				SHEET NO.	
NO.	BY:	DATE:	NO.	BY:	DATE:
1			3		
2			4		

