

**ELEVATION**  
(COLUMN FACE IS SHOWN UNWRAPPED FOR CLARITY)

**END VIEW**  
SOUTH FACE

AS-BUILT REPAIR QUANTITY TABLE				
REPAIRS BENT 5 (LEFT)	QUANTITIES			
	ESTIMATE		ACTUAL	
SHOTCRETE REPAIRS	AREA SF	VOLUME CF	AREA SF	VOLUME CF
CAP	36.3	15.1 *		
COLUMNS & STRUTS	24.9	10.4 *		
CONCRETE REPAIRS	AREA SF	VOLUME CF	AREA SF	VOLUME CF
CAP	12.0	6.2 *		
COLUMNS & STRUTS	0.0	0.0		
EPOXY RESIN INJECTION		LN. FT.		LN. FT.
CAP		0.0		
COLUMNS & STRUTS		0.0		
EPOXY COATING		SQ. FT.		SQ. FT.
TOP OF BENT CAP		109		

VALUES IN CHART REPRESENT ESTIMATED REPAIR TOTALS AFTER REMOVAL OF UNSOUND CONCRETE, MIN. OF 1" BEHIND REBAR AND 2" MIN. CLEAR TO SAWCUT. SEE REPAIR DETAILS.

**NOTES**

REPAIR LOCATIONS AND ESTIMATED QUANTITIES ARE GIVEN WITH THE BEST INFORMATION AVAILABLE. IF ADDITIONAL REPAIRS NOT SHOWN ON THE DRAWINGS ARE DEEMED NECESSARY BY THE ENGINEER, THE ENGINEER WILL NOTE ON THE DRAWINGS THE APPROXIMATE LOCATIONS AND DESCRIPTION OF THE REPAIRS AND ADJUST THE ACTUAL QUANTITIES ENTERED INTO THE REPAIR SUMMARY OF QUANTITIES TABLE.

SHOTCRETE REPAIRS MAY BE SUBSTITUTED IN LIEU OF CONCRETE REPAIRS WITH THE APPROVAL OF THE ENGINEER.

FOR REPAIR DETAILS, SEE "TYPICAL CAP AND COLUMN REPAIR DETAILS" SHEET.

EPOXY COATING SHALL BE APPLIED TO THE TOP FACE OF THE CAP. THE CONTRACTOR SHALL NOT COAT THE AREA OF THE CAP BENEATH THE MASONRY PLATES. FOR EPOXY COATING, SEE SPECIAL PROVISIONS.

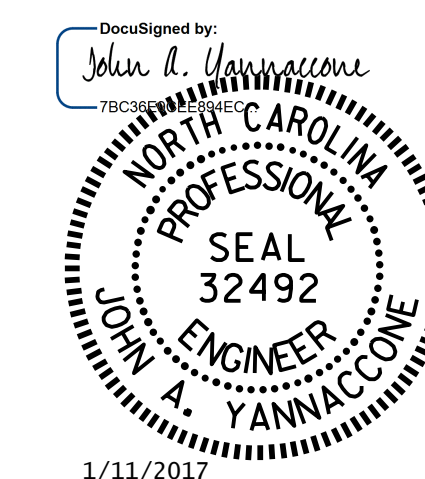
\* QUANTITY HAS BEEN INCREASED DUE TO THE POTENTIAL FOR FURTHER DETERIORATION SINCE THE FIELD INSPECTION BY STRUCTURES MANAGEMENT UNIT.

CONCRETE REPAIRS TO THE BENT CAP MAY REQUIRE BRIDGE JACKING. FOR BRIDGE JACKING, SEE "JACKING DETAILS" SHEET.

- DAMAGED AREA
- EPOXY RESIN INJECTION

PROJECT NO. I-5000  
GASTON COUNTY  
 BRIDGE NO. 120

SHEET 1 OF 6



STATE OF NORTH CAROLINA  
 DEPARTMENT OF TRANSPORTATION  
 RALEIGH

**BENT 5  
 SPAN E FACE  
 (LEFT SECTION)**

DRAWN BY : D. V. JOYNER DATE : 11/2016  
 CHECKED BY : J. YANNAACONE DATE : 11/2016

REVISIONS						SHEET NO.
NO.	BY:	DATE:	NO.	BY:	DATE:	TOTAL SHEETS
1			3			S-22
2			4			30

DOCUMENT NOT CONSIDERED FINAL UNLESS ALL SIGNATURES COMPLETED