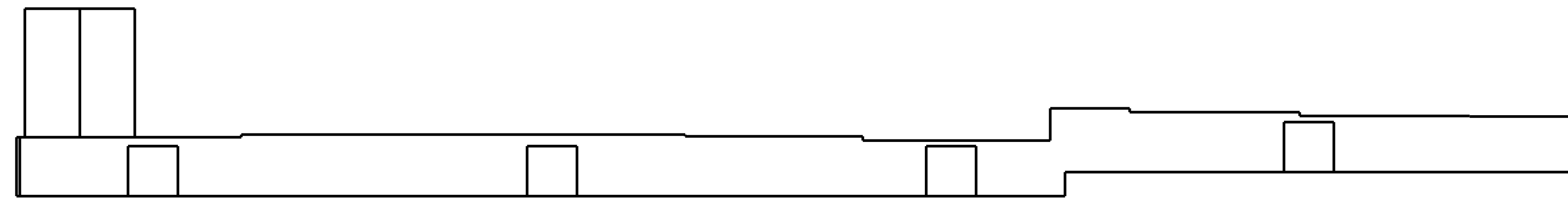
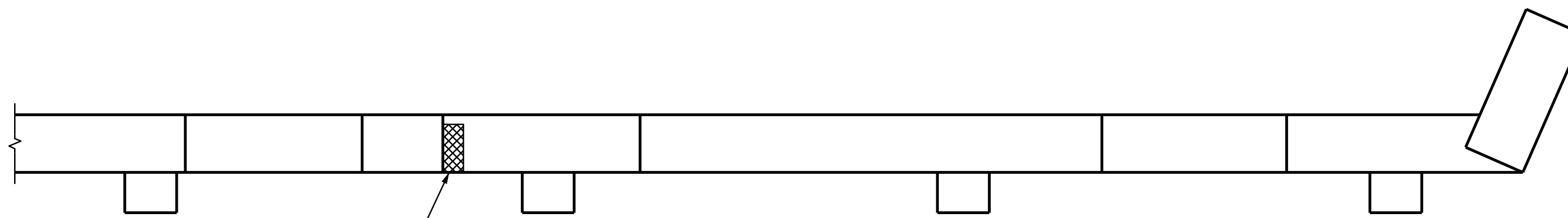


HALF PLAN  
(LEFT)

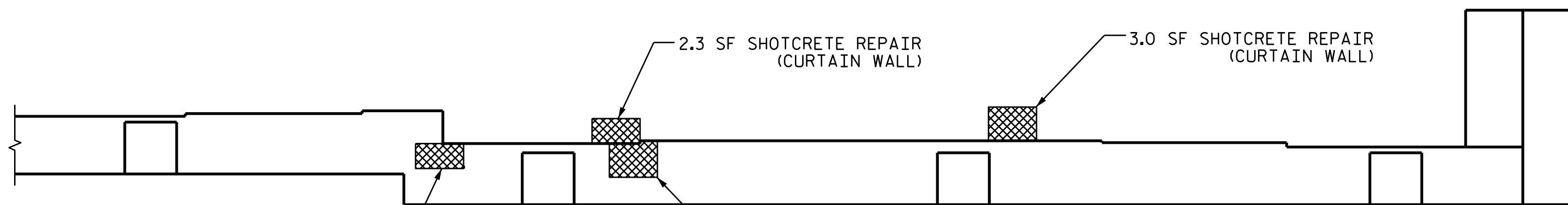


HALF ELEVATION  
(LEFT)



1.8 SF  
CONCRETE  
REPAIR

HALF PLAN  
(RIGHT)



2.2 SF  
CONCRETE  
REPAIR

HALF ELEVATION  
(RIGHT)

END BENT 2

AS-BUILT REPAIR QUANTITY TABLE

REPAIRS END BENT 2	QUANTITIES			
	ESTIMATE		ACTUAL	
SHOTCRETE REPAIRS	AREA SF	VOLUME CF	AREA SF	VOLUME CF
CAP	0.0	0.0		
CURTAIN WALL	5.3	2.2 *		
CONCRETE REPAIRS	AREA SF	VOLUME CF	AREA SF	VOLUME CF
CAP	7.2	3.0 *		
EPOXY RESIN INJECTION		LN. FT		LN. FT
CAP		0.0		
CURTAIN WALL		0.0		

VALUES IN CHART REPRESENT ESTIMATED REPAIR TOTALS AFTER REMOVAL OF UNSOUND CONCRETE, MIN. OF 1" BEHIND REBAR AND 2" MIN. CLEAR TO SAWCUT. SEE REPAIR DETAILS.

NOTES

REPAIR LOCATIONS AND ESTIMATED QUANTITIES ARE GIVEN WITH THE BEST INFORMATION AVAILABLE. IF ADDITIONAL REPAIRS NOT SHOWN ON THE DRAWINGS ARE DEEMED NECESSARY BY THE ENGINEER, THE ENGINEER WILL NOTE ON THE DRAWINGS THE APPROXIMATE LOCATIONS AND DESCRIPTION OF THE REPAIRS AND ADJUST THE ACTUAL QUANTITIES ENTERED INTO THE REPAIR SUMMARY OF QUANTITIES TABLE.

FOR CAP REPAIRS, SEE "TYPICAL CAP AND COLUMN REPAIR DETAILS" SHEET.

\* QUANTITIES HAVE BEEN INCREASED DUE TO THE POTENTIAL FOR FURTHER DETERIORATION SINCE THE FIELD INSPECTION BY STRUCTURES MANAGEMENT UNIT.

SHOTCRETE REPAIRS MAY BE SUBSTITUTED IN LIEU OF CONCRETE REPAIRS WITH THE APPROVAL OF THE ENGINEER.

CONCRETE REPAIRS TO THE CAP AT END BENT 2 MAY REQUIRE BRIDGE JACKING. FOR BRIDGE JACKING DETAILS, SEE "JACKING DETAILS" SHEET.

DAMAGED AREA

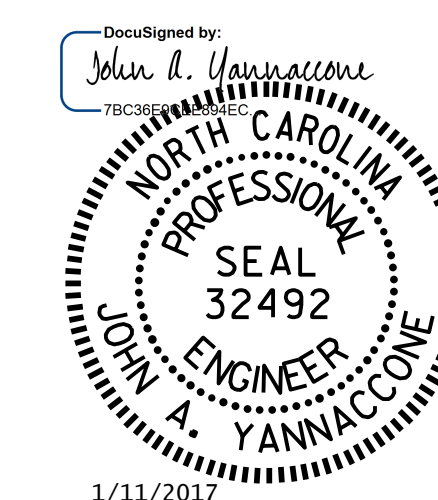
EPOXY RESIN INJECTION

PROJECT NO. I-5000

GASTON COUNTY

BRIDGE NO. 120

SHEET 2 OF 2



STATE OF NORTH CAROLINA  
DEPARTMENT OF TRANSPORTATION  
RALEIGH

END BENT 2

DRAWN BY : M. WELDON DATE : 11/2016  
CHECKED BY : J. YANNAACONE DATE : 11/2016

DOCUMENT NOT CONSIDERED  
FINAL UNLESS ALL  
SIGNATURES COMPLETED

REVISIONS						SHEET NO.
NO.	BY:	DATE:	NO.	BY:	DATE:	S-6
1			3			TOTAL SHEETS
2			4			30