

**AS-BUILT REPAIR QUANTITY TABLE**

REPAIRS END BENT 1	QUANTITIES			
	ESTIMATE		ACTUAL	
<b>SHOTCRETE REPAIRS</b>	AREA SF	VOLUME CF	AREA SF	VOLUME CF
CAP	0.0	0.0		
CURTAIN WALL	0.0	0.0		
<b>CONCRETE REPAIRS</b>	AREA SF	VOLUME CF	AREA SF	VOLUME CF
CAP	2.5	1.2 *		
<b>EPOXY RESIN INJECTION</b>		LN. FT		LN. FT
CAP		6.0		
CURTAIN WALL		2.5		

VALUES IN CHART REPRESENT ESTIMATED REPAIR TOTALS AFTER REMOVAL OF UNSOUND CONCRETE, MIN. OF 1" BEHIND REBAR AND 2" MIN. CLEAR TO SAWCUT. SEE REPAIR DETAILS.

**NOTES**

REPAIR LOCATIONS AND ESTIMATED QUANTITIES ARE GIVEN WITH THE BEST INFORMATION AVAILABLE. IF ADDITIONAL REPAIRS NOT SHOWN ON THE DRAWINGS ARE DEEMED NECESSARY BY THE ENGINEER, THE ENGINEER WILL NOTE ON THE DRAWINGS THE APPROXIMATE LOCATIONS AND DESCRIPTION OF THE REPAIRS AND ADJUST THE ACTUAL QUANTITIES ENTERED INTO THE REPAIR SUMMARY OF QUANTITIES TABLE.

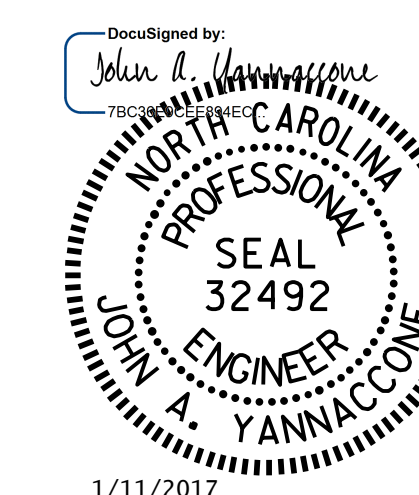
FOR CAP REPAIRS, SEE "TYPICAL CAP AND COLUMN REPAIR DETAILS" SHEET.

\* QUANTITIES HAVE BEEN INCREASED DUE TO THE POTENTIAL FOR FURTHER DETERIORATION SINCE THE FIELD INSPECTION BY STRUCTURES MANAGEMENT UNIT.

SHOTCRETE REPAIRS MAY BE SUBSTITUTED IN LIEU OF CONCRETE REPAIRS WITH THE APPROVAL OF THE ENGINEER.

- DAMAGED AREA
- EPOXY RESIN INJECTION

PROJECT NO. I-5000  
GASTON COUNTY  
 BRIDGE NO. 120  
 SHEET 1 OF 2



STATE OF NORTH CAROLINA  
 DEPARTMENT OF TRANSPORTATION  
 RALEIGH

**END BENT 1**

DRAWN BY : M. WELDON DATE : 11/2016  
 CHECKED BY : J. YANNAACONE DATE : 11/2016

REVISIONS						SHEET NO.
NO.	BY:	DATE:	NO.	BY:	DATE:	S-5
1			3			TOTAL SHEETS
2			4			30