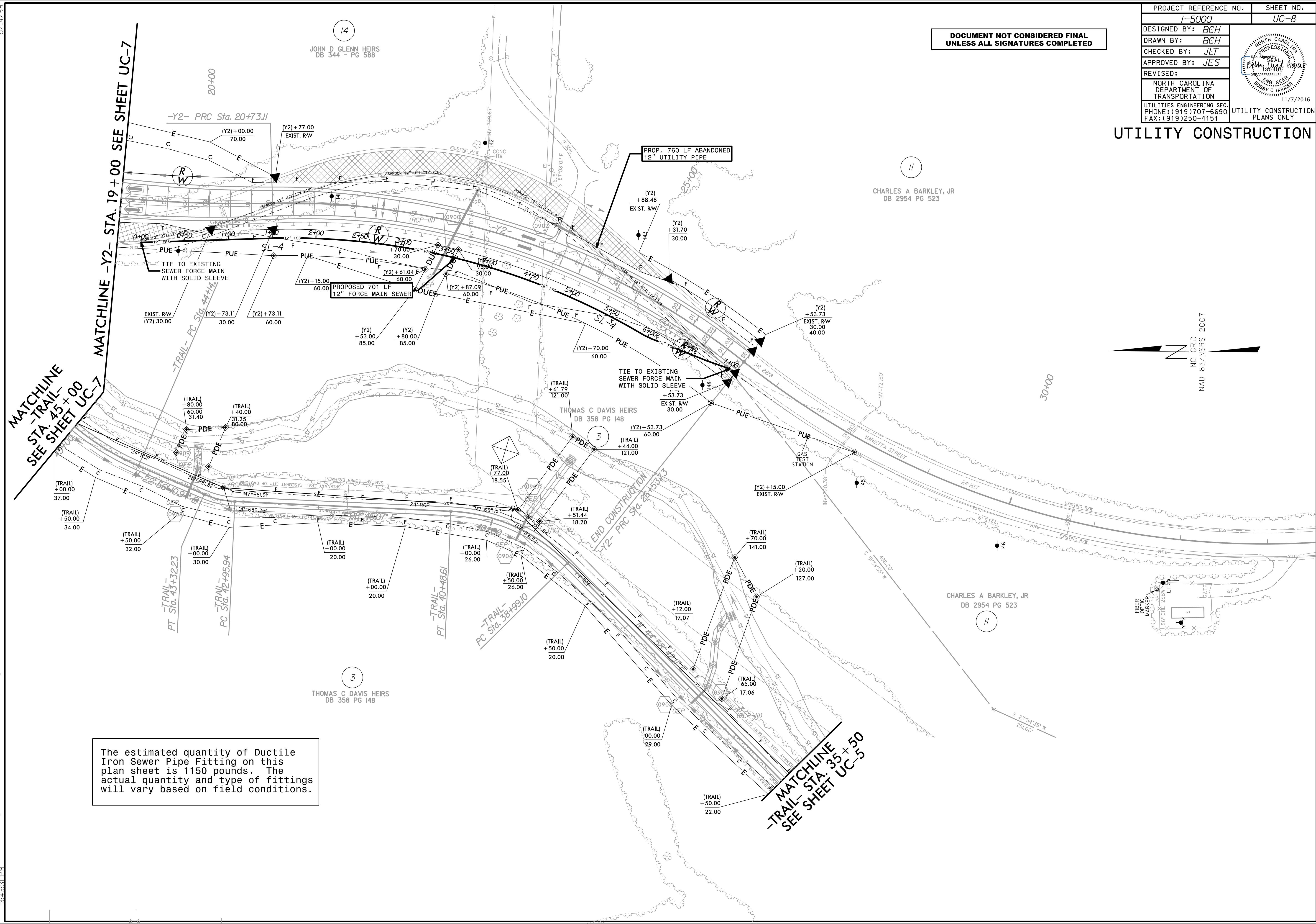


PROJECT REFERENCE NO.	SHEET NO.
I-5000	UC-8
DESIGNED BY: BCH	
DRAWN BY: BCH	
CHECKED BY: JLT	
APPROVED BY: JES	
REVISED:	11/7/2016
NORTH CAROLINA DEPARTMENT OF TRANSPORTATION	UTILITY CONSTRUCTION PLANS ONLY
UTILITIES ENGINEERING SEC. PHONE: (919) 707-6690 FAX: (919) 250-4151	

**DOCUMENT NOT CONSIDERED FINAL
UNLESS ALL SIGNATURES COMPLETED**

UTILITY CONSTRUCTION

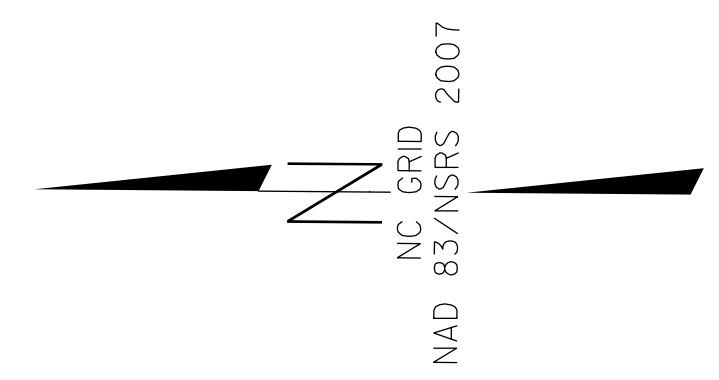


The estimated quantity of Ductile Iron Sewer Pipe Fitting on this plan sheet is 1150 pounds. The actual quantity and type of fittings will vary based on field conditions.

MATCHLINE - TRAIL - STA. 45 + 00
SEE SHEET UC-7

MATCHLINE - Y2 - STA. 19 + 00
SEE SHEET UC-7

MATCHLINE - TRAIL - STA. 35 + 50
SEE SHEET UC-5



5/14/99
 I:\7206\15000_Ut_(rdj_sht#09)_UC(ut)_const_Sht#08)_psh.dgn
 11/7/2016 11:31:11 AM