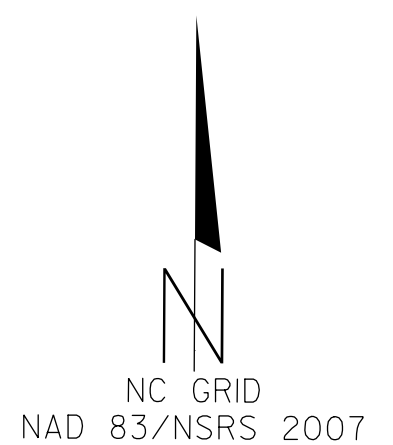


PROJECT REFERENCE NO.	SHEET NO.
1-5000	UC-5
DESIGNED BY: BCH	
DRAWN BY: BCH	
CHECKED BY: JLT	
APPROVED BY: JES	
REVISED:	11/7/2016
NORTH CAROLINA DEPARTMENT OF TRANSPORTATION	UTILITY CONSTRUCTION PLANS ONLY
UTILITIES ENGINEERING SEC. PHONE: (919) 707-6690 FAX: (919) 250-4151	

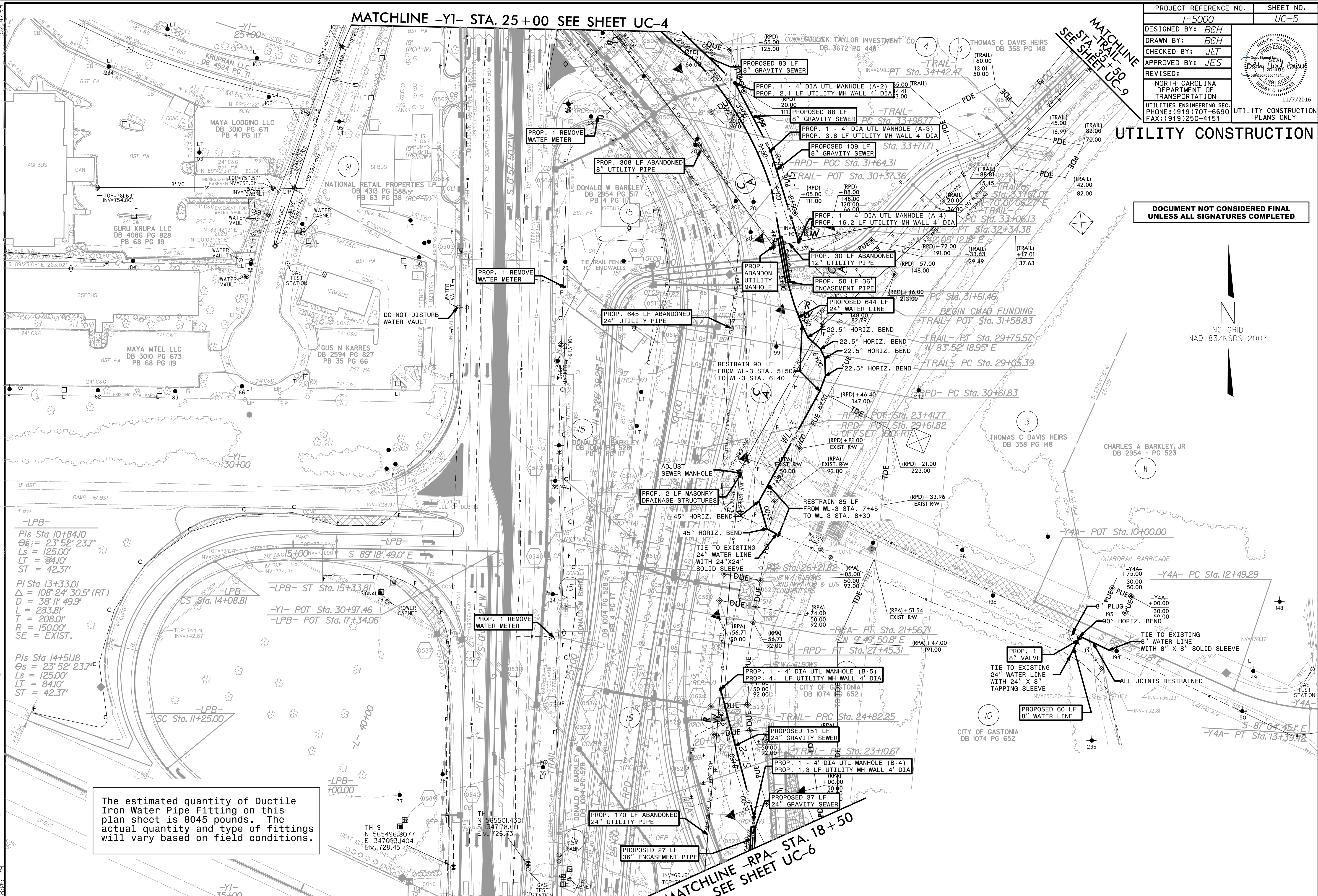
UTILITY CONSTRUCTION

DOCUMENT NOT CONSIDERED FINAL UNLESS ALL SIGNATURES COMPLETED



MATCHLINE -Y1- STA. 25+00 SEE SHEET UC-4

MATCHLINE SEE STA. 32+50 SEE SHEET UC-9



-LPB-
 Pls Sta 10+84.10
 $\theta_s = 23^\circ 52' 23.7''$
 $L_s = 125.00'$
 $LT = 84.10'$
 $ST = 42.37'$

-LPB-
 Pls Sta 13+33.01
 $\Delta = 108^\circ 24' 30.5''$ (RT)
 $D = 38' 11'' 49.9''$
 $L = 283.81'$
 $T = 208.01'$
 $R = 150.00'$
 $SE = EXIST.$

-LPB-
 Pls Sta 14+51.18
 $\theta_s = 23^\circ 52' 23.7''$
 $L_s = 125.00'$
 $LT = 84.10'$
 $ST = 42.37'$

The estimated quantity of Ductile Iron Water Pipe Fitting on this plan sheet is 8045 pounds. The actual quantity and type of fittings will vary based on field conditions.

MATCHLINE -Y1- STA. 35+00

MATCHLINE -RPA- STA. 18+50 SEE SHEET UC-6

I:\7206_15000_Ut-(r-dj_sht#05)_UC(ut)_const_Sht#05)_psh.dgn
 11/7/2016 15:00:00