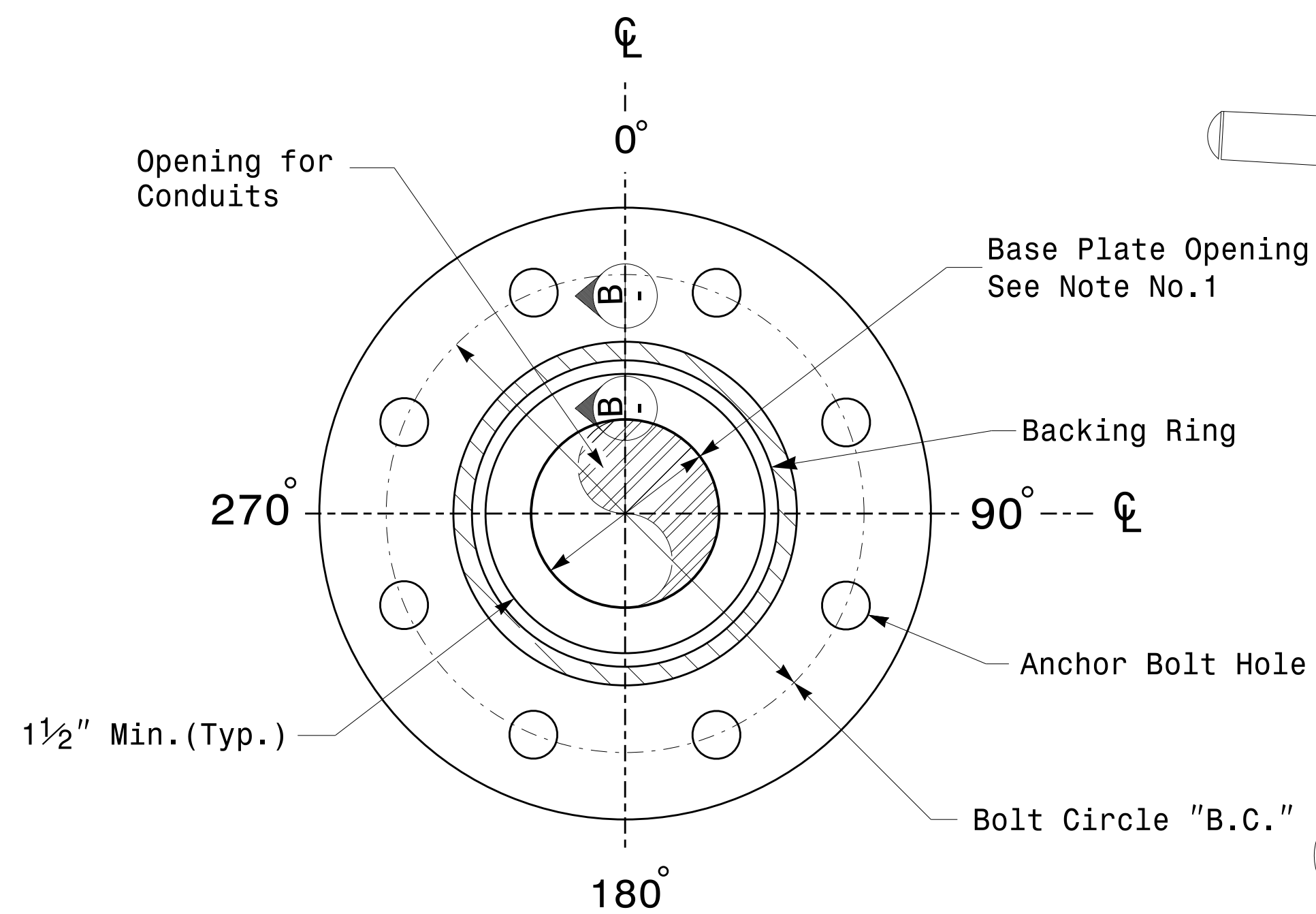
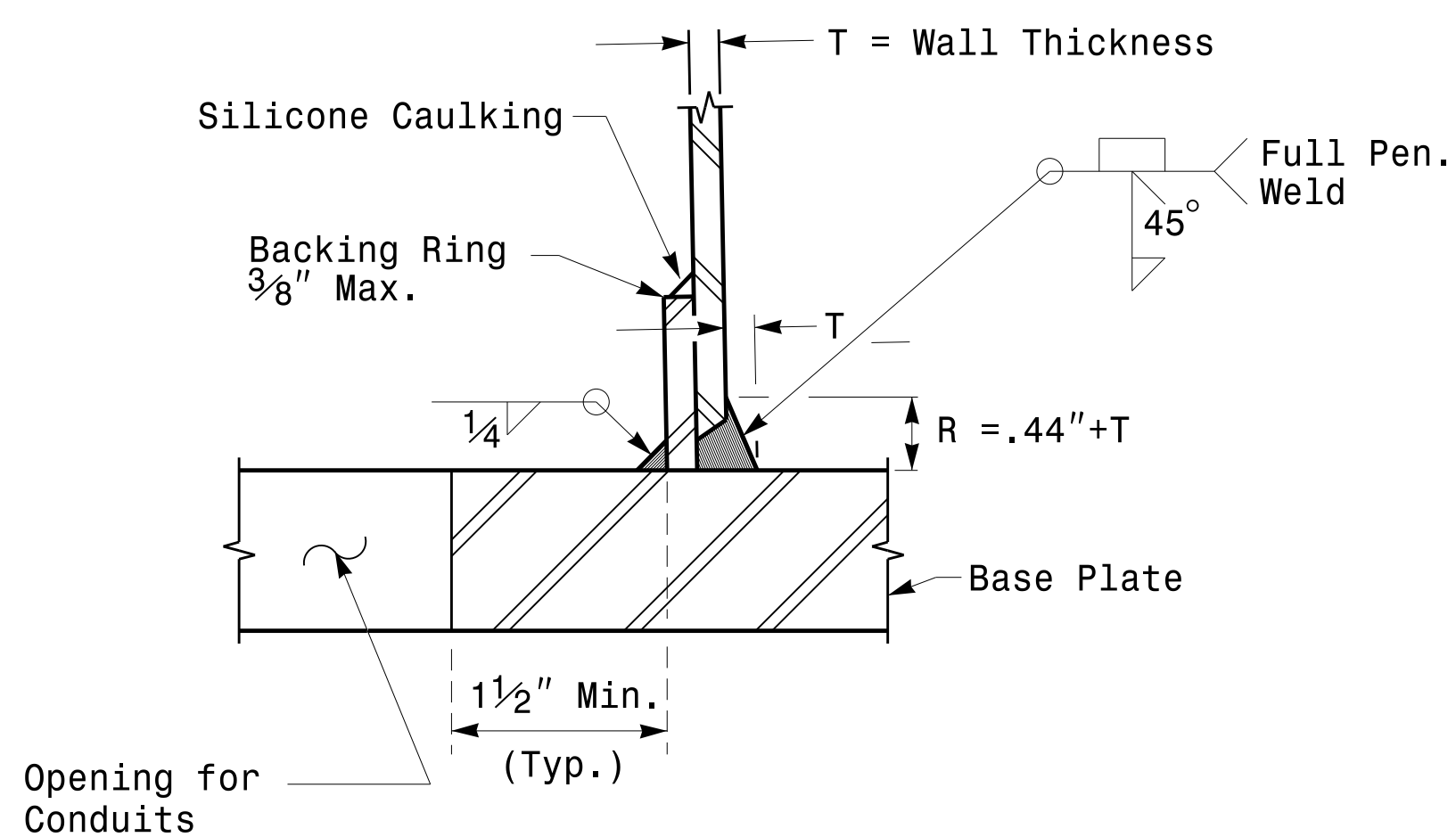


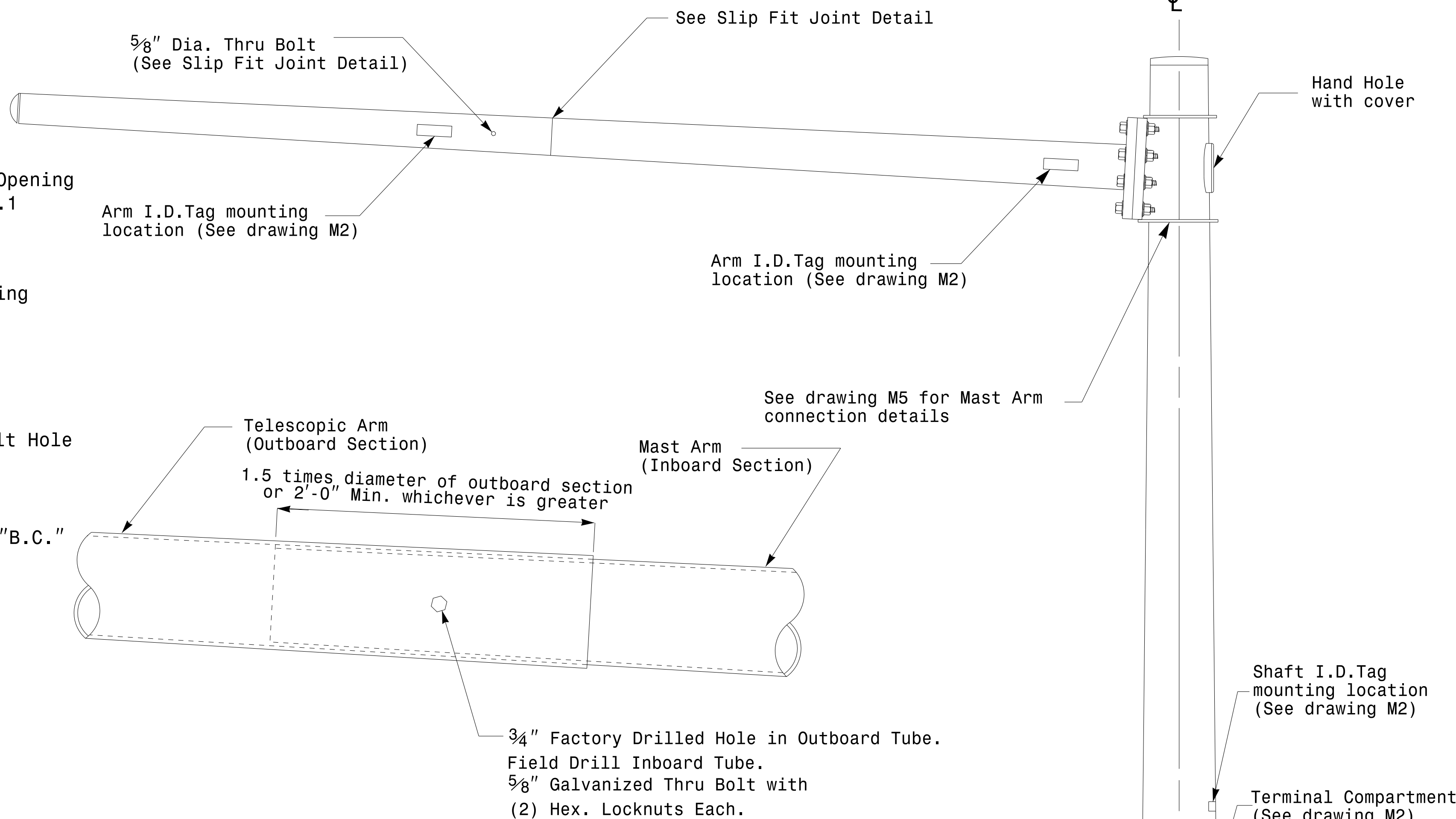
Note:
1. Opening in pole base plate shall be equal to pole base inside diameter minus 3 1/2" but shall not be less than 8 1/2".



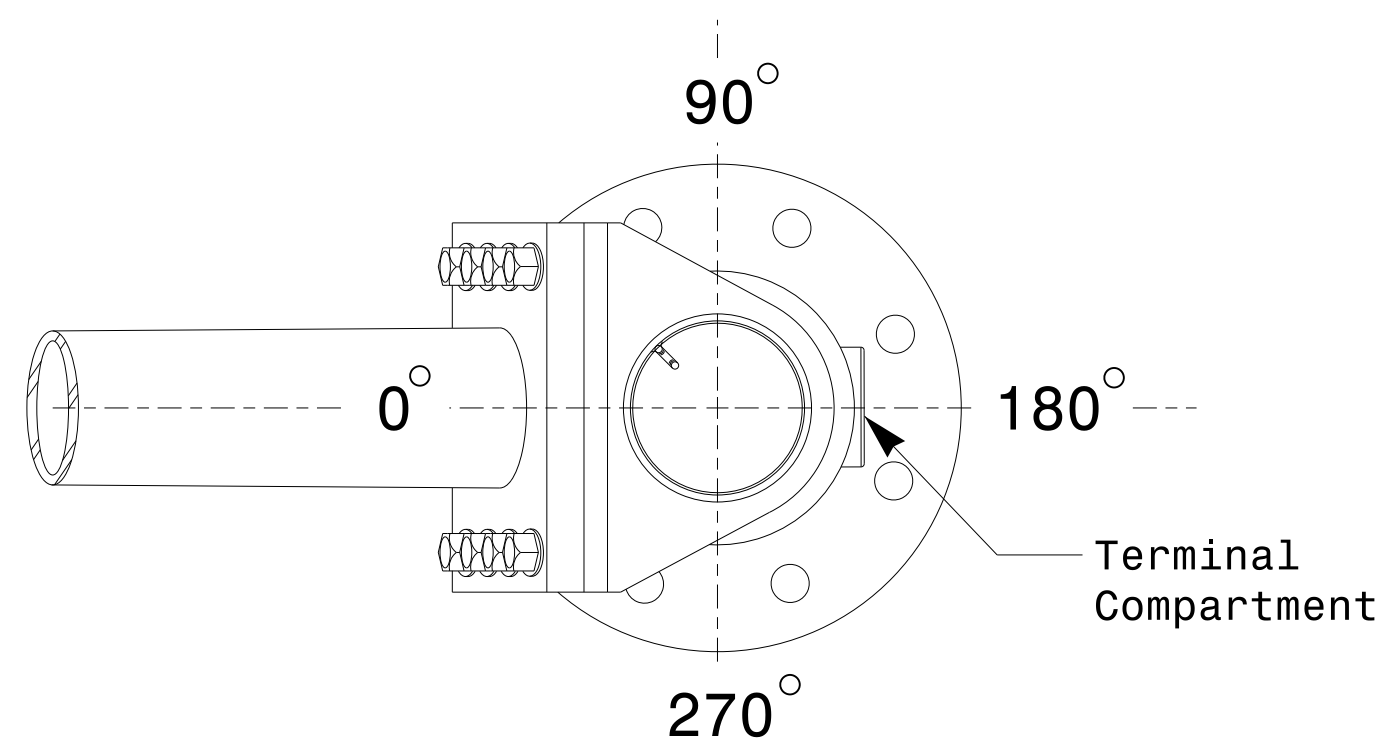
Section A-A
Pole Base Plate Details



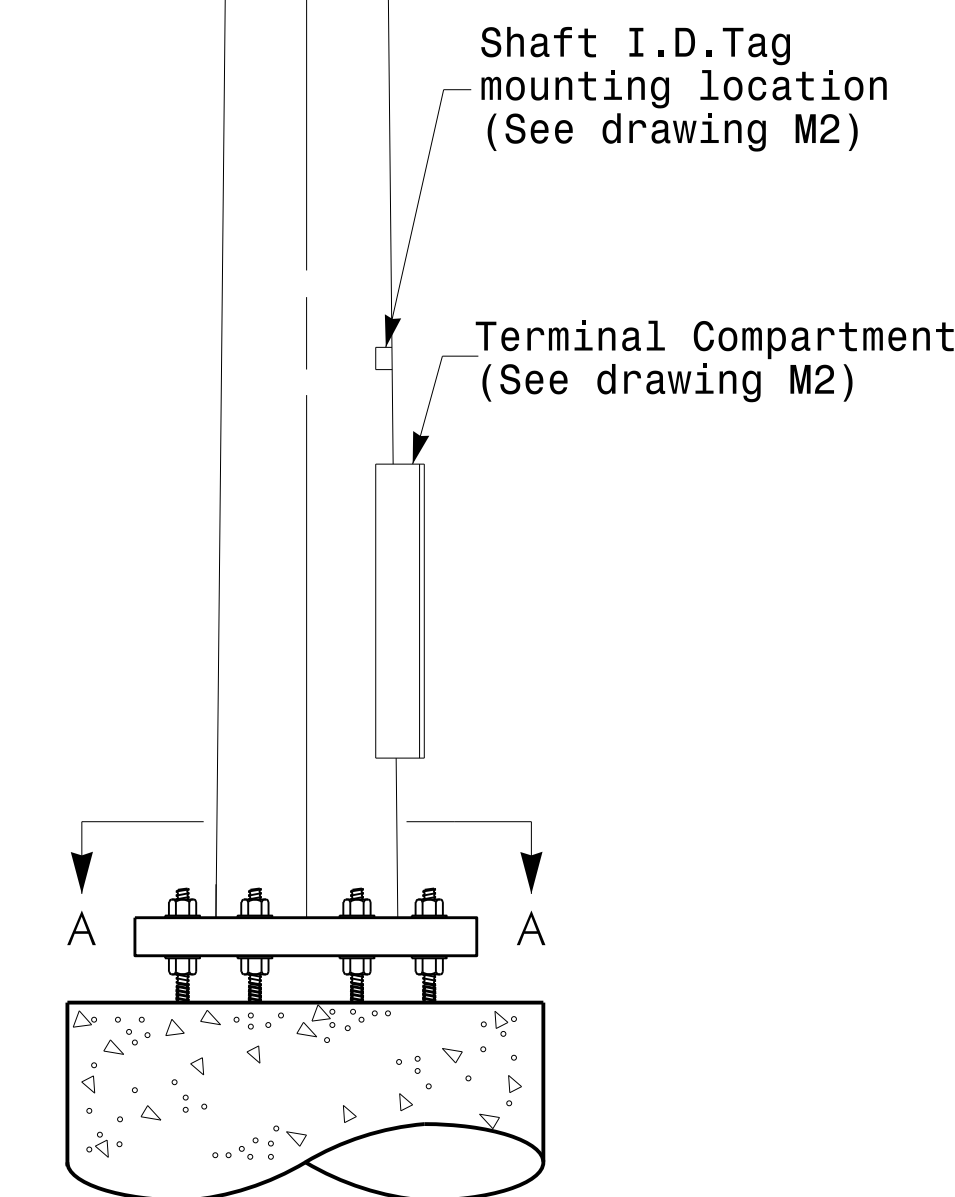
Section B-B
(Pole Attachment to Base Plate)
Full-Penetration Groove Weld Detail



Slip Fit Joint Detail for Mast Arm



Mast Arm Radial Orientation



Mast Arm Pole

Fabrication Details - Mast Arm Poles

<p>Prepared in the Offices of:</p> <p>750 N. Greenfield Pkwy, Garner, NC 27529</p>	<p>Typical Fabrication Details For Mast Arm Poles</p>		<p>SEAL</p> <p>DocuSigned by <i>Dibesh C. Sarkar</i></p> <p>44E8E32E147E4C4...</p>
	<p>PLAN DATE: FEBRUARY 2016</p> <p>DESIGNED BY: K.C. DURIGON</p> <p>PREPARED BY: N. BITTING</p> <p>REVIEWED BY: D.C. SARKAR</p>	<p>REVISIONS</p> <p>INIT.</p> <p>DATE</p>	

17-FEB-2016 16:05:13 I:\CSG\W115\Signal\sig\Design Section\Facsimile\RegionM4\Sheets\2016\2014_Sig_M4_Std_Fabrication_Details-Mast_Arm_Poles.dgn