

GENERAL NOTES

- . SIGNS FURNISHED BY STATE
- . CONFIRM IN WRITING AT LEAST 4 MONTHS IN ADVANCE, THE ACTUAL DATE THE DEPARTMENT FURNISHED SIGNS WILL BE REQUIRED.
- . ALL TYPE 'D' SIGNS SHALL BE MOUNTED ON TWO U-CHANNEL POSTS UNLESS OTHERWISE INDICATED ON THE PLANS.
- . IF REMOVAL OR RELOCATION OF SIGNS ON PRIVATE STREET (NON-STATE MAINTAINED) IS REQUIRED DUE TO CONSTRUCTION, THE CONTRACTOR SHALL INFORM THE ENGINEER. THE WORK WILL BE COMPLETED BY OTHERS.
- . WHEN NOT STATIONED OR DIMENSIONED ON PLANS, ALL 'E' AND 'F' SIGNS SHALL BE FIELD LOCATED BY THE ENGINEER
- . ALL EXISTING SIGNS ON "U" CHANNEL POST WITHIN THE PROJECT LIMITS SHALL BE REMOVED AND DISPOSED OF UNLESS OTHERWISE NOTED ON PLANS.
- . WHEN EXISTING SIGNS ARE REMOVED AND INSTALLED ON NEW SUPPORTS, THE RE-ERECTION SHALL IMMEDIATELY FOLLOW THE REMOVAL.
- . THE BACKGROUND FOR TYPE E & F SIGNS SHALL BE TYPE C REFLECTIVE SHEETING.
- . DO NOT BEGIN FABRICATION FOR TYPES A & B SIGNS MOUNTED ON OVERHEAD STRUCTURES OR STEEL SUPPORTS UNTIL "S" DIMENSIONS HAVE BEEN FIELD VERIFIED.
- . SEE ROADWAY PLANS FOR GUARD/GUIDE RAIL DETAILS.

PROJECT NOTES

- 1 DISPOSE OF SIGN SYSTEM, U-CHANNEL
- 2 DISPOSE OF SIGN SYSTEM, STEEL BEAM
- 3 DISPOSE OF SUPPORT, STEEL BEAM
- 4 RELOCATE SIGN TYPE A (GROUND MOUNTED)
- 5 DISPOSE OF SIGN, TYPE A (OVERHEAD)
- 6 DISPOSE OF LIGHTING SYSTEM
- 7 DISPOSE OF WALKWAY
- 8 CUT STEEL SIGN HANGERS ON OVERHEAD SIGNS
- 9 DISPOSE OF SIGN SYSTEM ON SPAN WIRE
- 10 RELOCATE SIGN TYPE D
- 11 DISPOSE OF SUPPORT, U-CHANNEL

SUMMARY OF QUANTITIES

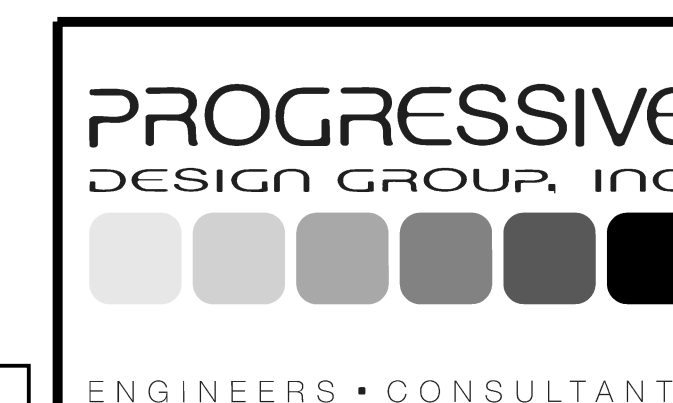
ITEM NO.		ITEM DESCRIPTION	QUANTITY	UNIT
DESC. NO.	SECT. NO.			
4048000000	902	REINFORCED CONCRETE SIGN FOUNDATION	2	C.Y.
4054000000	902	PLAIN CONCRETE SIGN FOUNDATION	1	C.Y.
4057000000	SP	OVERHEAD FOOTING	66	C.Y.
4060000000	903	SUPPORTS, BREAKAWAY STEEL BEAM	1,326	LB.
4066000000	903	SUPPORTS, SIMPLE STEEL BEAM	1,547	LB.
4072000000	903	SUPPORTS, 3 LB STEEL U-CHANNEL	1,500	L.F.
4082100000	SP	SUPPORTS, OVERHEAD SIGN STRUCTURE AT STA. 7+30 -Y1-	1	L.S.
4082100000	SP	SUPPORTS, OVERHEAD SIGN STRUCTURE AT STA. 16+50 -Y1-	1	L.S.
4082100000	SP	SUPPORTS, OVERHEAD SIGN STRUCTURE AT STA. 27+40 -Y1-	1	L.S.
4082100000	SP	SUPPORTS, OVERHEAD SIGN STRUCTURE AT STA. 32+62 -Y1-	1	L.S.
4082100000	SP	SUPPORTS, OVERHEAD SIGN STRUCTURE AT STA. 49+42 -L-	1	L.S.
4109000000	904	SIGN ERECTION, TYPE A (OVERHEAD)	6	EA.
4096000000	904	SIGN ERECTION, TYPE D	3	EA.
4102000000	904	SIGN ERECTION, TYPE E	66	EA.
4108000000	904	SIGN ERECTION, TYPE F	13	EA.
4110000000	904	SIGN ERECTION, TYPE A/B (GROUND MOUNTED)	6	EA.
4116100000	904	SIGN ERECTION, RELOCATE SIGN TYPE A (GROUND MOUNTED)	2	EA.
4116100000	904	SIGN ERECTION, RELOCATE SIGN TYPE D	2	EA.
4138000000	907	DISPOSAL OF SUPPORT, STEEL BEAM	2	EA.
4152000000	907	DISPOSAL OF SIGN SYSTEM, STEEL BEAM	3	EA.
4155000000	907	DISPOSAL OF SIGN SYSTEM, U-CHANNEL	45	EA.
4192000000	907	DISPOSAL OF SUPPORT, U-CHANNEL	2	EA.
4234000000	907	DISPOSAL OF SIGN, A OR B (OVERHEAD)	6	EA.
4251000000	907	DISPOSAL OF LIGHTING SYSTEM	3	EA.
4263000000	907	DISPOSAL OF WALKWAY	3	EA.
4273000000	SP	CUTTING OF SIGN HANGERS, OVERHEAD	12	EA.
4273000000	SP	DISPOSAL OF SIGN SYSTEM ON SPAN WIRE	1	EA.

ROADWAY STANDARD DRAWING

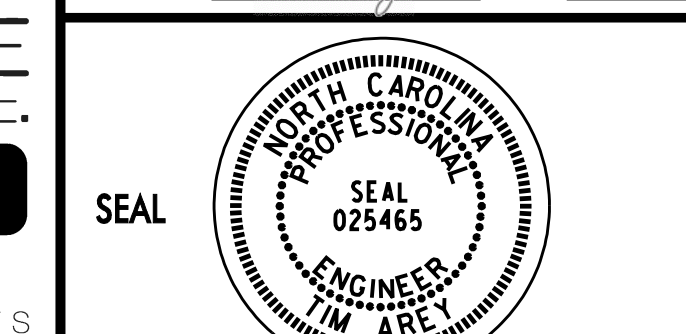
THE FOLLOWING ROADWAY STANDARDS AS APPEAR IN "ROADWAY STANDARD DRAWINGS" - PROJECT SERVICES UNIT - N.C. DEPARTMENT OF TRANSPORTATION - RALEIGH, N.C., DATED JANUARY 2012 ARE APPLICABLE TO THIS PROJECT AND BY REFERENCE HEREBY ARE CONSIDERED A PART OF THESE PLANS:

STD. NO.	TITLE
901.10	TYPE 'A' SIGNS
901.50	ARROWS AND SHIELDS
901.70	SIGN STRINGERS AND SUPPORT SPACING
901.80	SIGN MOUNTING DETAILS - FOR TYPE A AND TYPE B SIGNS
903.10	GROUND MOUNTED SIGN SUPPORTS (SHEET 3 OF 3)
904.10	ORIENTATION OF GROUND MOUNTED SIGNS
904.20	SECONDARY SIGN MOUNTING
904.30	SUPPLEMENTAL SIGN MOUNTING
904.50	MOUNTING OF TYPE 'D', 'E' AND 'F' SIGNS ON 'U' CHANNEL POSTS

DOCUMENT NOT CONSIDERED FINAL
UNLESS ALL SIGNATURES COMPLETED



APPROVED: *Tim Arty* DATE: 2/17/2017



SIGNING PLAN