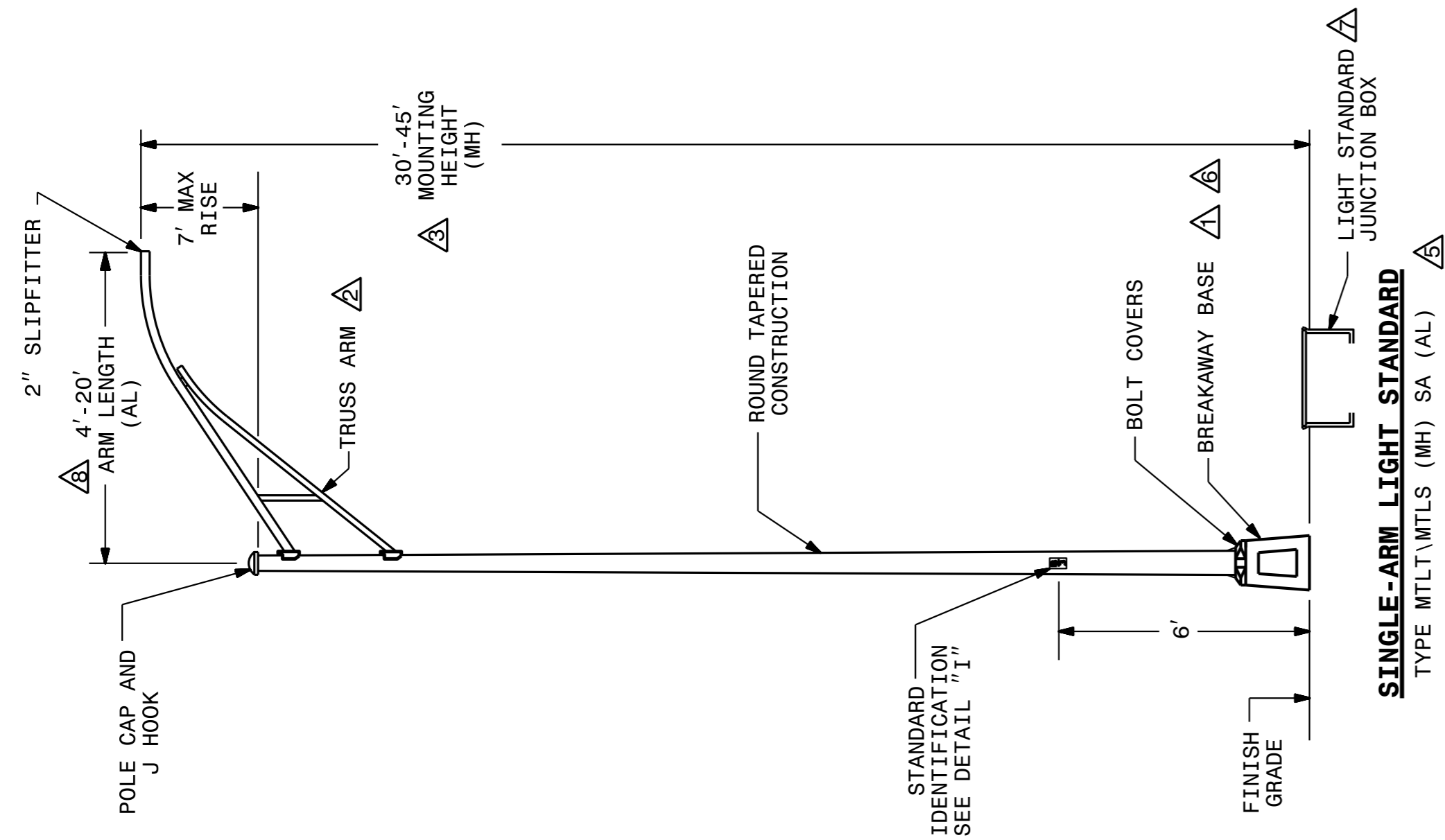


STATE OF NORTH CAROLINA
DEPT. OF TRANSPORTATION
DIVISION OF HIGHWAYS
RALEIGH, N.C.

1-12

ENGLISH STANDARD DRAWING FOR
LIGHT STANDARDS
SINGLE-ARM

SHEET 1 OF 3
1404D01



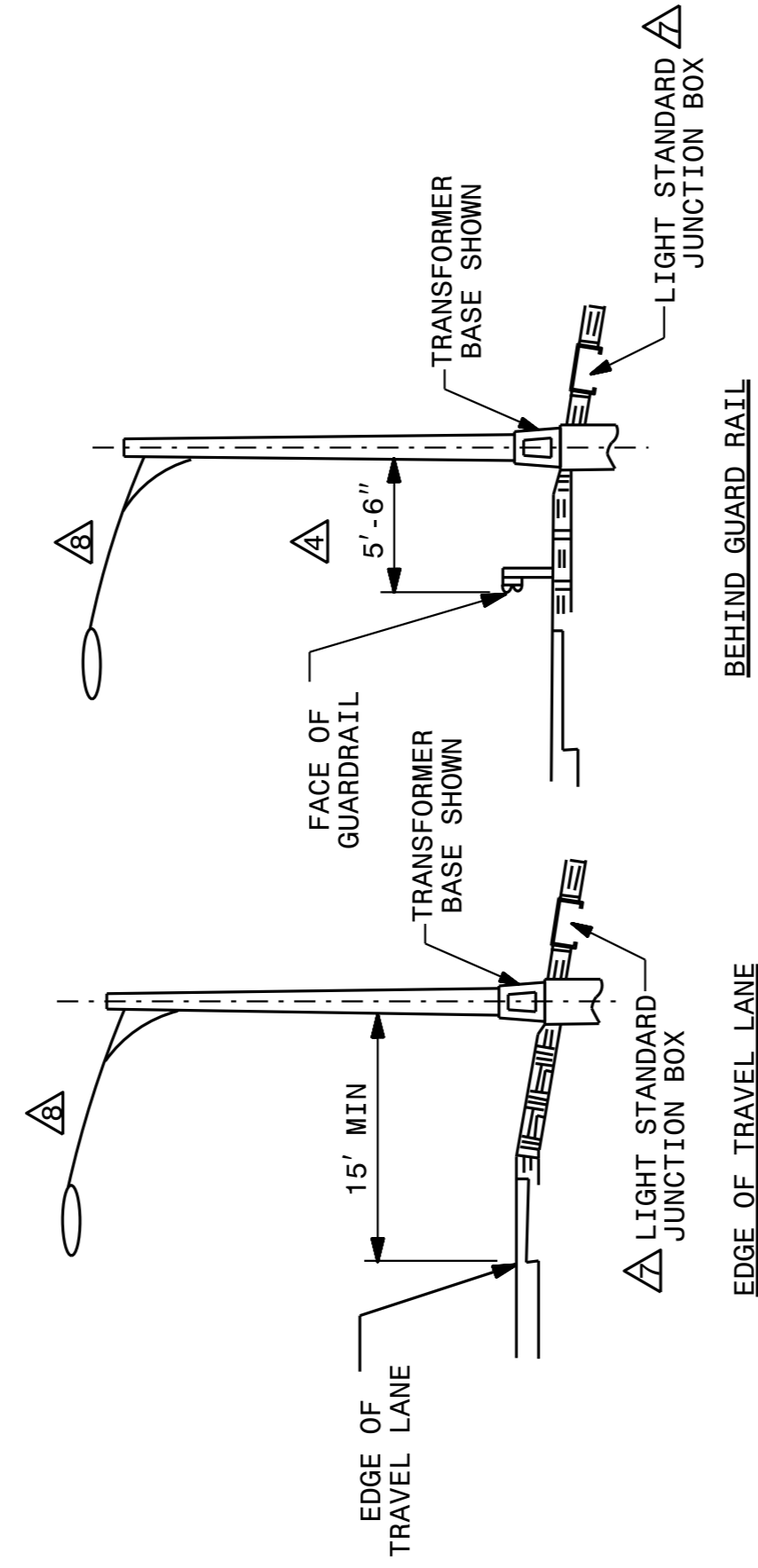
- NOTES**
- △ TRANSFORMER BASE SHOWN. OTHER BASES MEETING ASHTO BREAKAWAY REQUIREMENTS MAY BE PROVIDED IF APPROVED BY THE ENGINEER. SEE "BASE DETAILS" ON SHEET 2 OF 3.
 - △ SINGLE-MEMBER ARMS MAY BE PROVIDED IN LIEU OF TRUSS ARMS, WHEN SPECIFIED ARM LENGTH IS 8' OR LESS AND MOUNTING HEIGHT IS 35' OR LESS.
 - △ MOUNTING HEIGHT INCLUDES BREAKAWAY BASE FOR LIGHT STANDARDS WITH TRANSFORMER BASES. SEE "BASE DETAILS" ON SHEET 2 OF 3.
 - △ STANDARD PLACEMENT MAY BE REDUCED TO 3'-6" BEHIND FACE OF GUARDRAIL WHEN POSTS ARE SPACED 3'-1 1/2", OR WHERE SPEED LIMIT IS LESS THAN 55 MPH.
 - △ INSERT MOUNTING HEIGHT (MH) AND ARM LENGTH (AL) FROM PAY ITEM DESCRIPTION TO DETERMINE PROPOSED SINGLE-ARM LIGHT STANDARDS.
 - △ LIGHT STANDARDS MOUNTED ON BRIDGE OUTRIGGERS OR BEHIND RETAINING/BARRIER WALLS DO NOT REQUIRE BREAKAWAY BASES.
 - △ PROVIDE PC18 LIGHT STANDARD JUNCTION BOX WITHIN 2' OF LIGHT STANDARD FOUNDATION OR CONNECTION OF CIRCULAR JUNCTION BOX SHALL BE PLACED TO THE INSIDE OR BEHIND THE LIGHT STANDARD, AS VIEWED FROM THE ROADWAY.
 - △ WHEN DIRECT POLE MOUNTED LUMINAIRES ARE USED, BRACKET ARM IS NOT REQUIRED.

STATE OF NORTH CAROLINA
DEPT. OF TRANSPORTATION
DIVISION OF HIGHWAYS
RALEIGH, N.C.

1-12

ENGLISH STANDARD DRAWING FOR
LIGHT STANDARDS
SINGLE-ARM

SHEET 1 OF 3
1404D01



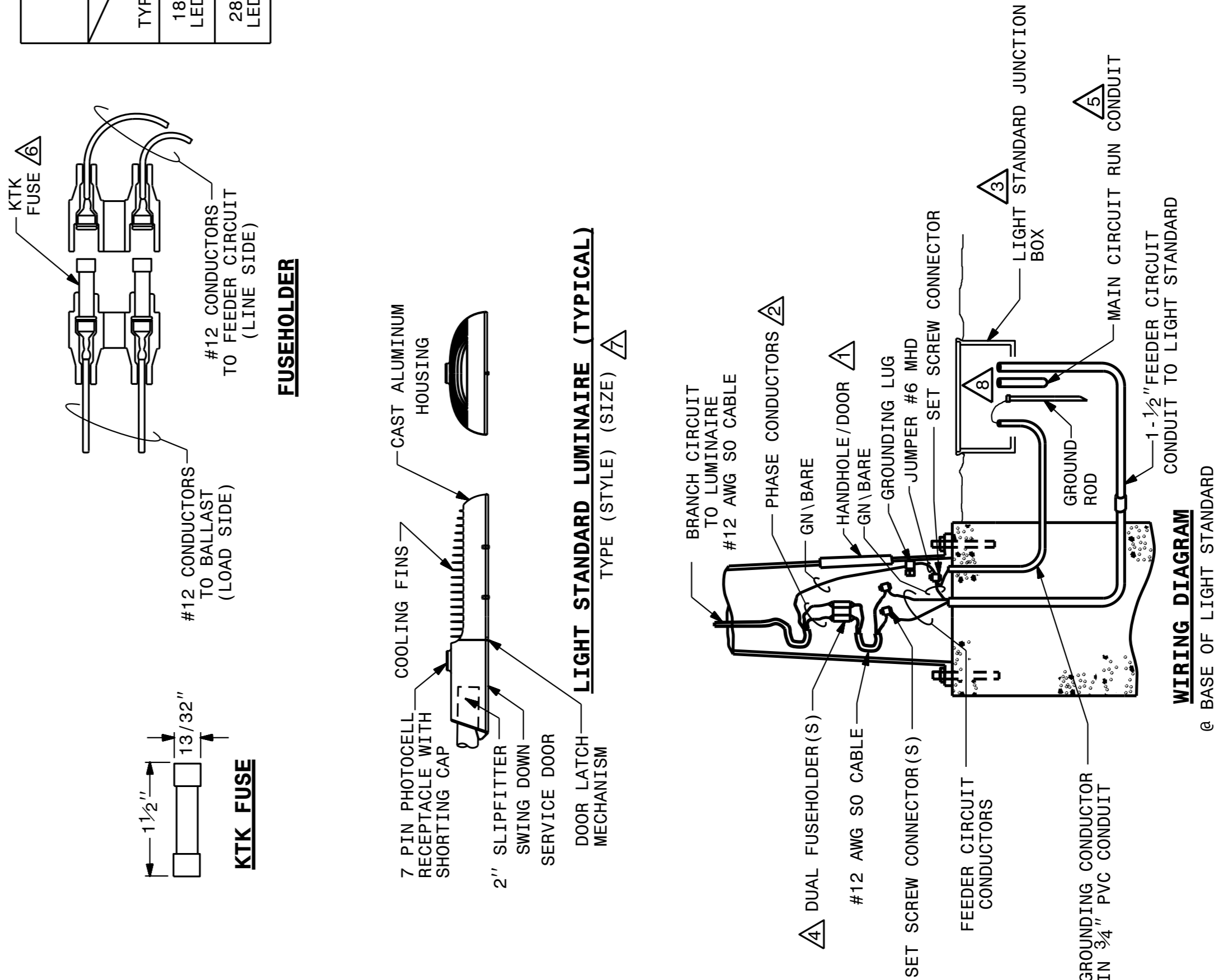
STANDARD PLACEMENT

STATE OF NORTH CAROLINA
DEPT. OF TRANSPORTATION
DIVISION OF HIGHWAYS
RALEIGH, N.C.

1-12

ENGLISH STANDARD DRAWING FOR
LIGHT STANDARD LUMINAIRES

SHEET 1 OF 1
1406D01



LUMINAIRE CHARACTERISTICS

| SPEC | HPS RELACEMENT EQUIVALENT | COLOR TEMP | MINIMUM PERCENT OF INITIAL OUTPUT (70K HOURS & 25°C) | MINIMUM MAINTAINED LUMENS |
|------|---------------------------|-------------|--|---------------------------|
| TYPE | 185W (MAX) LED FIXTURE | 3500K-4500K | 83% | 15,500 |
| | 285W (MAX) LED FIXTURE | 3500K-4500K | 83% | 21,000 |

- NOTES**
- △ PROVIDE ACCESS TO FUSEHOLDERS FROM HANDHOLE OR TRANSFORMER BASE.
 - △ SEE STANDARD SPECIFICATIONS SECTION 1400-4F FOR WIRING METHODS. USE TAPE OR HEAT SHRINK TO COLOR CONDUCTORS TO MATCH PHASE COLOR (RED/BLACK/BLUE).
 - △ MAKE SPLICES IN ACCORDANCE WITH SECTION 1400-4(F) OF THE STANDARD SPECIFICATIONS.
 - △ BREAKAWAY FUSEHOLDERS REQUIRED AT ALL BREAKAWAY LIGHT STANDARDS.
 - △ SIZE FEEDER CIRCUIT CONDUCTORS AS SHOWN IN THE PLANS.
 - △ SEE STANDARD SPECIFICATIONS SECTION 1400-2E FOR FUSEHOLDERS.
 - △ INSERT STYLE AND SIZE FROM PAY ITEM DESCRIPTION TO DETERMINE PROPOSED LUMINAIRES.
 - △ PERMANENTLY ATTACH GROUNDING CONDUCTOR TO GROUND ROD VIA EXOTHERMIC WELD.

STATE OF NORTH CAROLINA
DEPT. OF TRANSPORTATION
DIVISION OF HIGHWAYS
RALEIGH, N.C.

1-12

ENGLISH STANDARD DRAWING FOR
LIGHT STANDARD LUMINAIRES

SHEET 1 OF 1
1406D01

| 2 | | | |
|--|------|--------------|----------|
| 1 | | | |
| Rev. | Date | Description | Approved |
| NORTH CAROLINA DEPARTMENT OF TRANSPORTATION ROADWAY DESIGN LIGHTING/ELECTRICAL SECTION LIGHT STANDARD AND LIGHT STANDARD LUMINAIRE DETAILS I-85/US 321 INTERCHANGE GASTON COUNTY | | | |
| Drawn By: | AB | Approved By: | Dwg No.: |



DOCUMENT NOT CONSIDERED FINAL
UNLESS ALL SIGNATURES COMPLETED

DocuSigned by:
Paul Chan 11/14/2016