

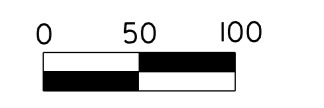
# USE FOR LIGHTING CONSTRUCTION ONLY



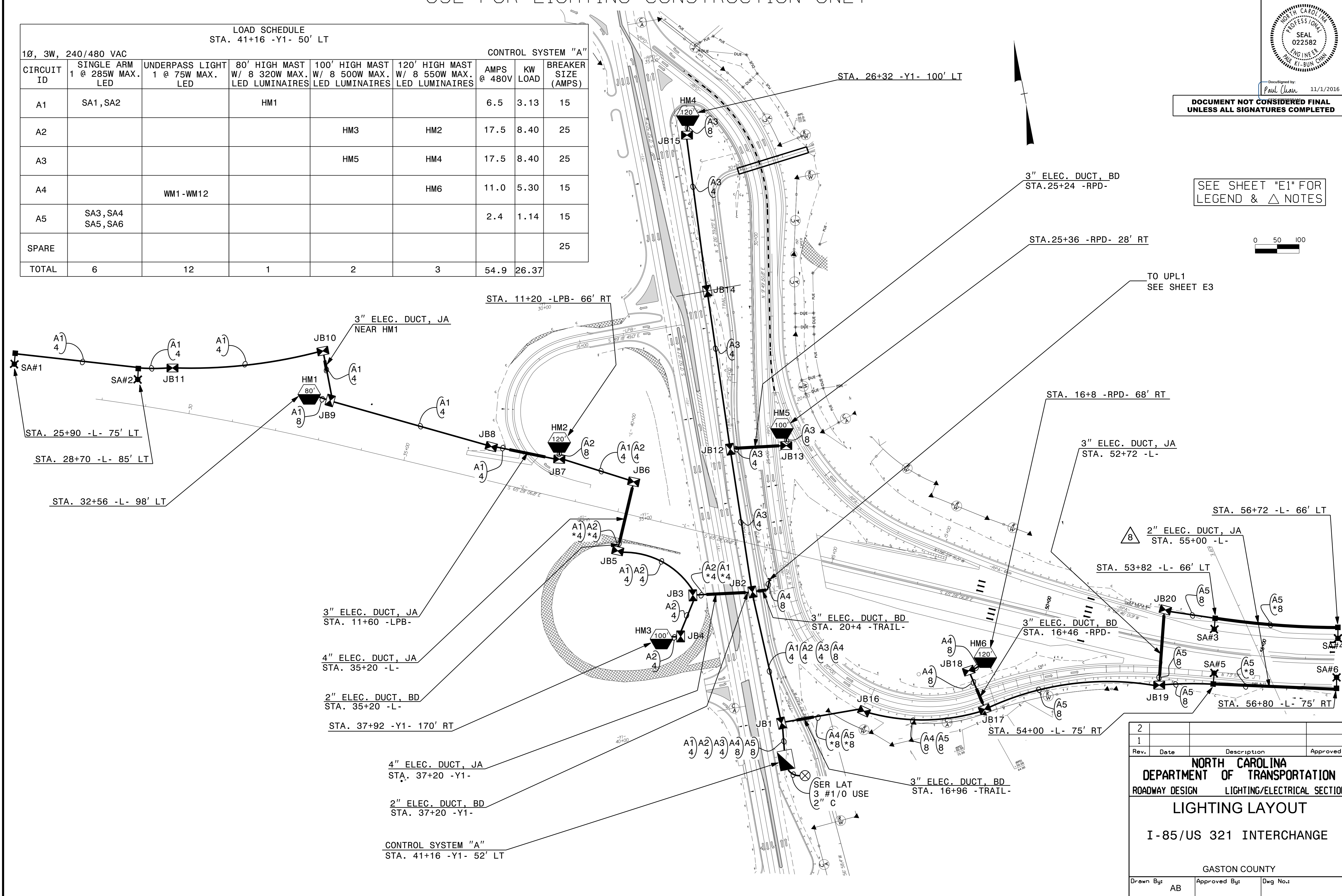
Designed by  
*Paul Chan* 11/1/2016

**DOCUMENT NOT CONSIDERED FINAL  
UNLESS ALL SIGNATURES COMPLETED**

SEE SHEET "E1" FOR  
LEGEND & △ NOTES



LOAD SCHEDULE STA. 41+16 -Y1- 50' LT						CONTROL SYSTEM "A"		
CIRCUIT ID	SINGLE ARM 1 @ 285W MAX. LED	UNDERPASS LIGHT 1 @ 75W MAX. LED	80' HIGH MAST W/ 8 320W MAX. LED LUMINAIRES	100' HIGH MAST W/ 8 500W MAX. LED LUMINAIRES	120' HIGH MAST W/ 8 550W MAX. LED LUMINAIRES	AMPS @ 480V	KW LOAD	BREAKER SIZE (AMPS)
A1	SA1, SA2		HM1			6.5	3.13	15
A2				HM3	HM2	17.5	8.40	25
A3				HM5	HM4	17.5	8.40	25
A4		WM1-WM12			HM6	11.0	5.30	15
A5	SA3, SA4 SA5, SA6					2.4	1.14	15
SPARE								25
TOTAL	6	12	1	2	3	54.9	26.37	



Q:\NOV-2016\1545  
 R:\Lighting\I-5000\Lighting Design\I-5000\_1&e\_psh\_upl.e3 - Copy.dgn  
 rghal A1-RD-78044

2			
1			
Rev.	Date	Description	Approved
<b>NORTH CAROLINA DEPARTMENT OF TRANSPORTATION</b> ROADWAY DESIGN LIGHTING/ELECTRICAL SECTION <b>LIGHTING LAYOUT</b> I-85/US 321 INTERCHANGE GASTON COUNTY			
Drawn By:	AB	Approved By:	Dwg No.: