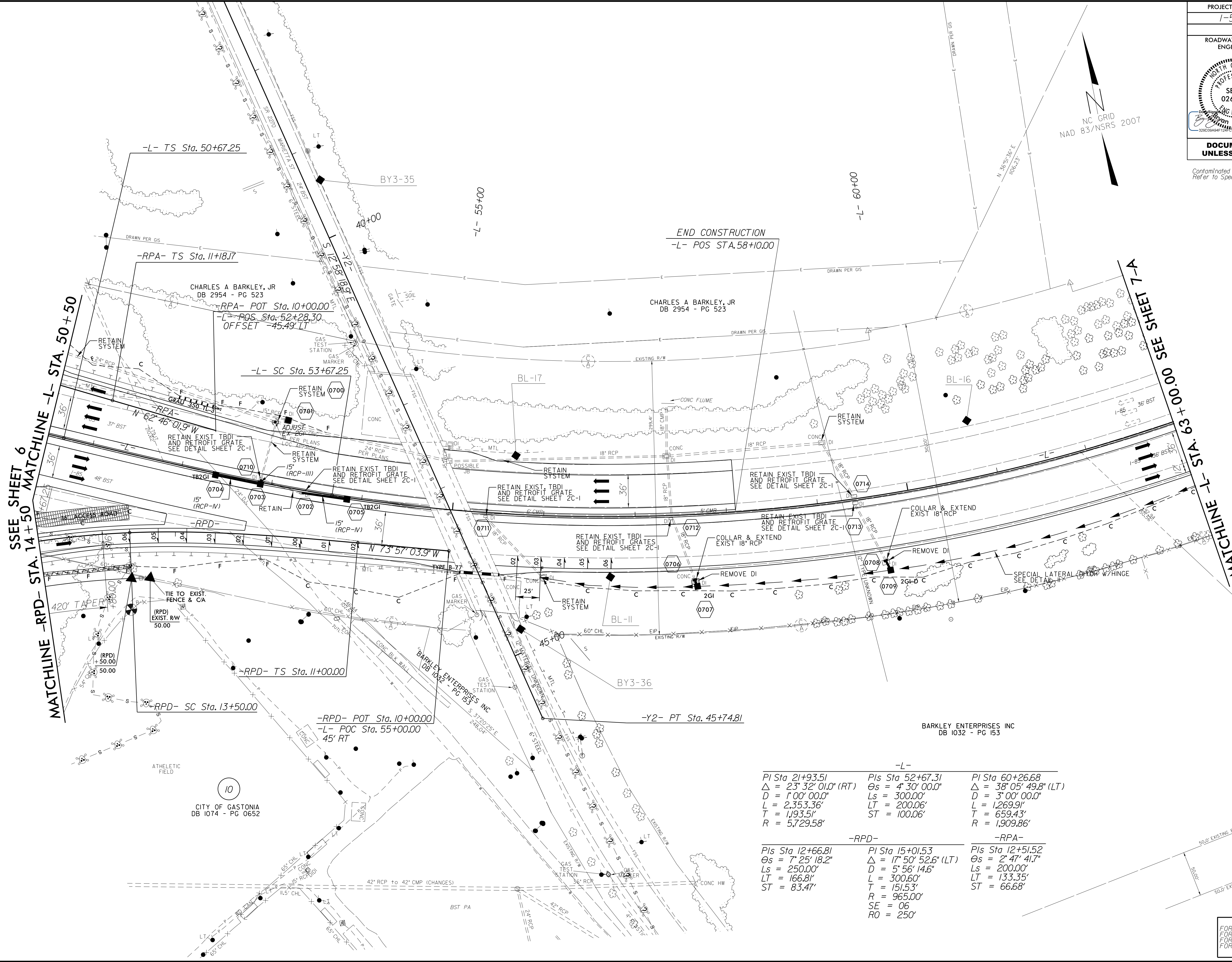


**DOCUMENT NOT CONSIDERED FINAL
UNLESS ALL SIGNATURES COMPLETED**

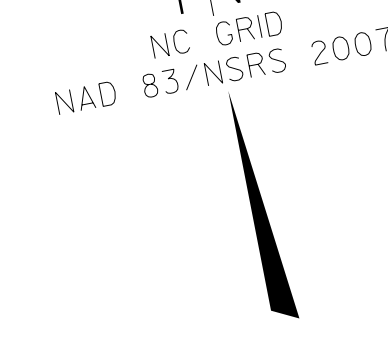
Contaminated soil is not anticipated to be encountered. Refer to Spec Sec 107-25.

8/17/99

P:\AN-2017\1536\1-5000-Rdy...dgn
3/28/2017 10:58:55 AM



REVISIONS



<p>-L-</p> <p>PI Sta 21+93.51 $\Delta = 23^\circ 32' 01.0''$ (RT) D = 1'00' 00.0" L = 2,353.36' T = 1,933.51' R = 5,729.58'</p>	<p>PIs Sta 52+67.31 $\Theta_s = 4^\circ 30' 00.0''$ Ls = 300.00' LT = 200.06' ST = 100.06'</p>	<p>PI Sta 60+26.68 $\Delta = 38^\circ 05' 49.8''$ (LT) D = 3'00' 00.0" L = 1,269.91' T = 659.43' R = 1,909.86'</p>
<p>-RPD-</p> <p>PIs Sta 12+66.81 $\Theta_s = 7^\circ 25' 18.2''$ Ls = 250.00' LT = 166.81' ST = 83.47'</p>	<p>PI Sta 15+01.53 $\Delta = 17^\circ 50' 52.6''$ (LT) D = 5'56' 14.6" L = 300.60' T = 151.53' R = 965.00' SE = 06 RO = 250'</p>	<p>-RPA-</p> <p>PIs Sta 12+51.52 $\Theta_s = 2^\circ 47' 41.7''$ Ls = 200.00' LT = 133.35' ST = 66.68'</p>

FOR DRAINAGE DETAILS SEE SHEET 20-1
FOR -L- PROFILE SEE SHEET 16 AND 17
FOR -RPA- PROFILE SEE SHEET 13
FOR -RPD- PROFILE SEE SHEET 13