

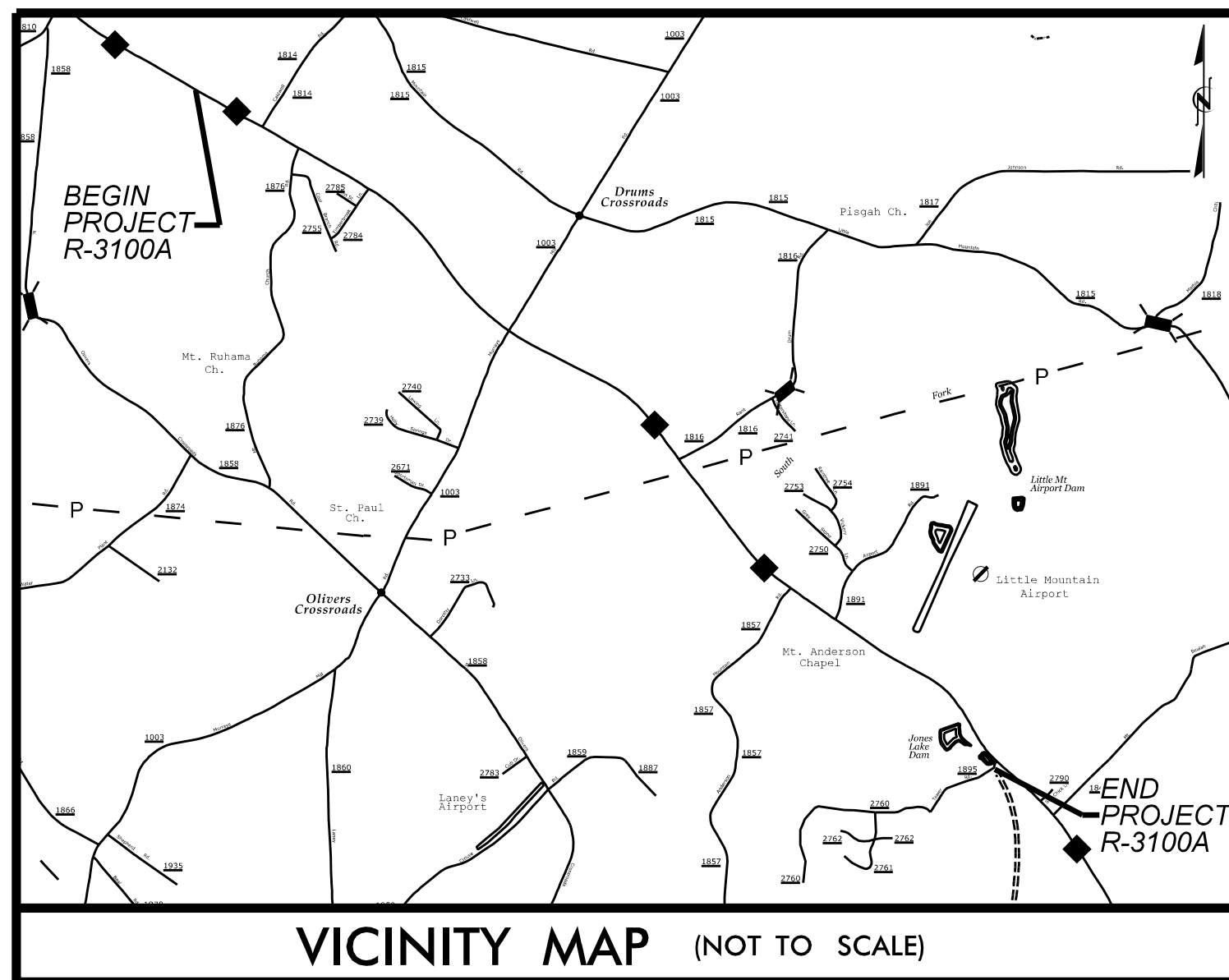
**This electronic collection of documents is provided  
for the convenience of the user  
and is Not a Certified Document –**

**The documents contained herein were originally issued  
and sealed by the individuals whose names and license  
numbers appear on each page, on the dates appearing  
with their signature on that page.**

**This file or an individual page  
shall not be considered a certified document.**

09/08/99

TIP PROJECT: R-3100A



STATE OF NORTH CAROLINA  
DIVISION OF HIGHWAYS

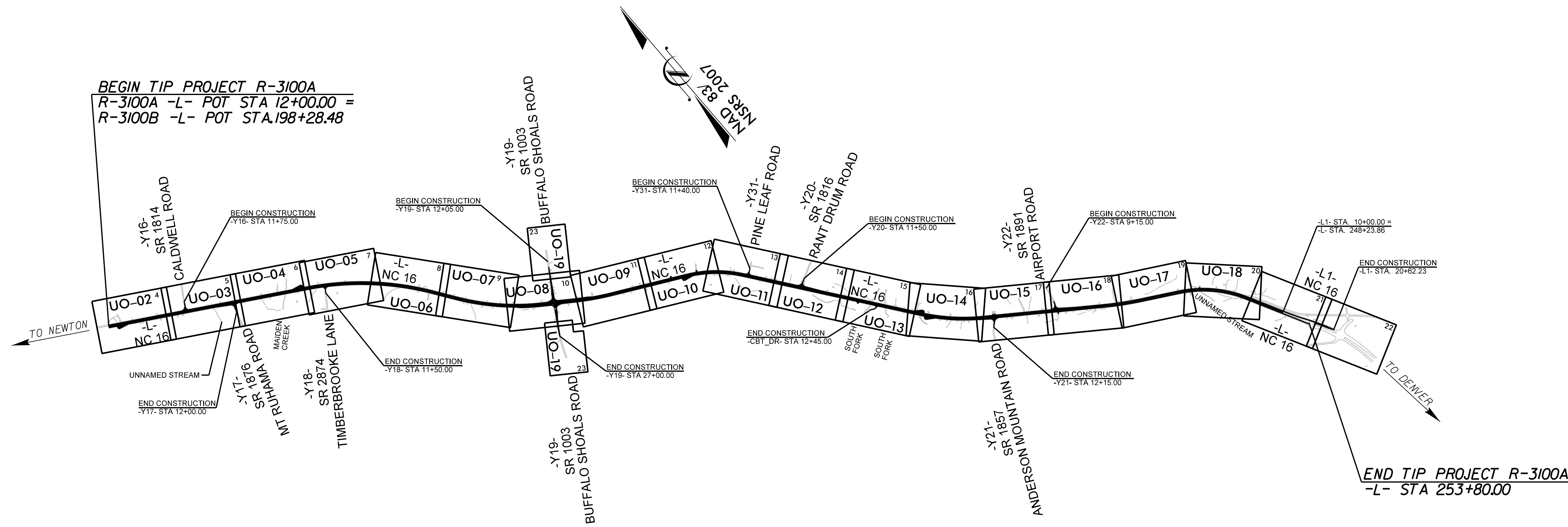
UTILITIES BY OTHERS PLANS  
CATAWBA COUNTY

LOCATION: NC 16 FROM NORTH OF SR 1814 (CALDWELL RD.)  
TO SR 1895 (TOWER RD.)

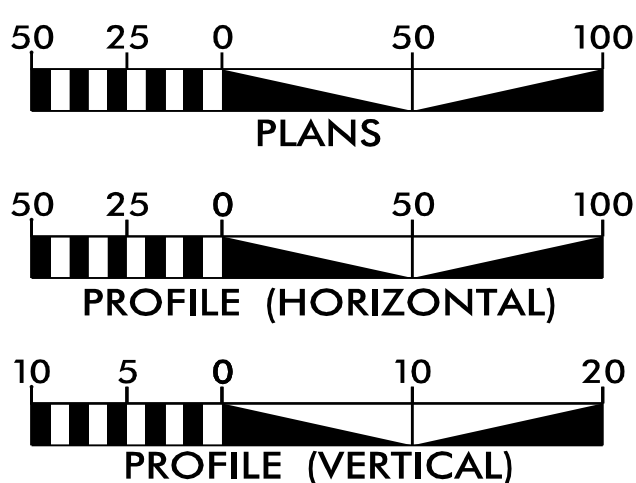
TYPE OF WORK: DISTRIBUTION POWER, TELECOMMUNICATIONS  
AND WATER RELOCATION

T.I.P. NO.	SHEET NO.
R-3100A	UO-1

NOTE:  
ALL UTILITY WORK SHOWN ON THIS SHEET IS DONE BY OTHERS.  
NO PAYMENT WILL BE MADE TO THE CONTRACTOR FOR UTILITY WORK SHOWN ON THIS SHEET.



GRAPHIC SCALES



INDEX OF SHEETS

SHEET NO.:	DESCRIPTION:
UO-1	TITLE SHEET
UO-02 THRU UO-19	UBO PLAN SHEETS

UTILITY OWNERS WITH CONFLICTS

- (A) DUKE ENERGY PROGRESS - POWER DISTRIBUTION
- (B) AT&T - TELECOMMUNICATIONS
- (C) CHARTER COMMUNICATIONS - TELECOMM.
- (D) ENERGY UNITED - POWER DISTRIBUTION

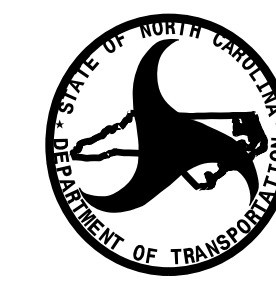
PREPARED IN THE OFFICE OF:

**SO-DEEP | SAM NC**

SO-DEEP | SAM NC, Inc.

A SAM COMPANY  
2800-154 Summer Boulevard, Raleigh, NC 27616 Tel 919-878-7466

Keith Garry UTILITY PROJECT MANAGER  
XXXX PROJECT UTILITY COORDINATOR



DIVISION OF HIGHWAYS  
UTILITIES UNIT  
1555 MAIL SERVICES CENTER  
RALEIGH, NC 27699-1555  
PHONE (919) 707-6690  
FAX (919) 250-4151

Carl Barclay, PE UTILITIES REGIONAL ENGINEER  
James E. Swinson UTILITIES ENGINEER  
Amy Dupree UTILITIES AREA COORDINATOR  
Steve Trexler UTILITIES COORDINATOR

\$\$\$\$\$SYTIME\$\$\$\$\$  
\$\$\$\$\$DDN\$\$\$\$\$  
\$\$\$\$\$USERNAME\$\$\$\$\$

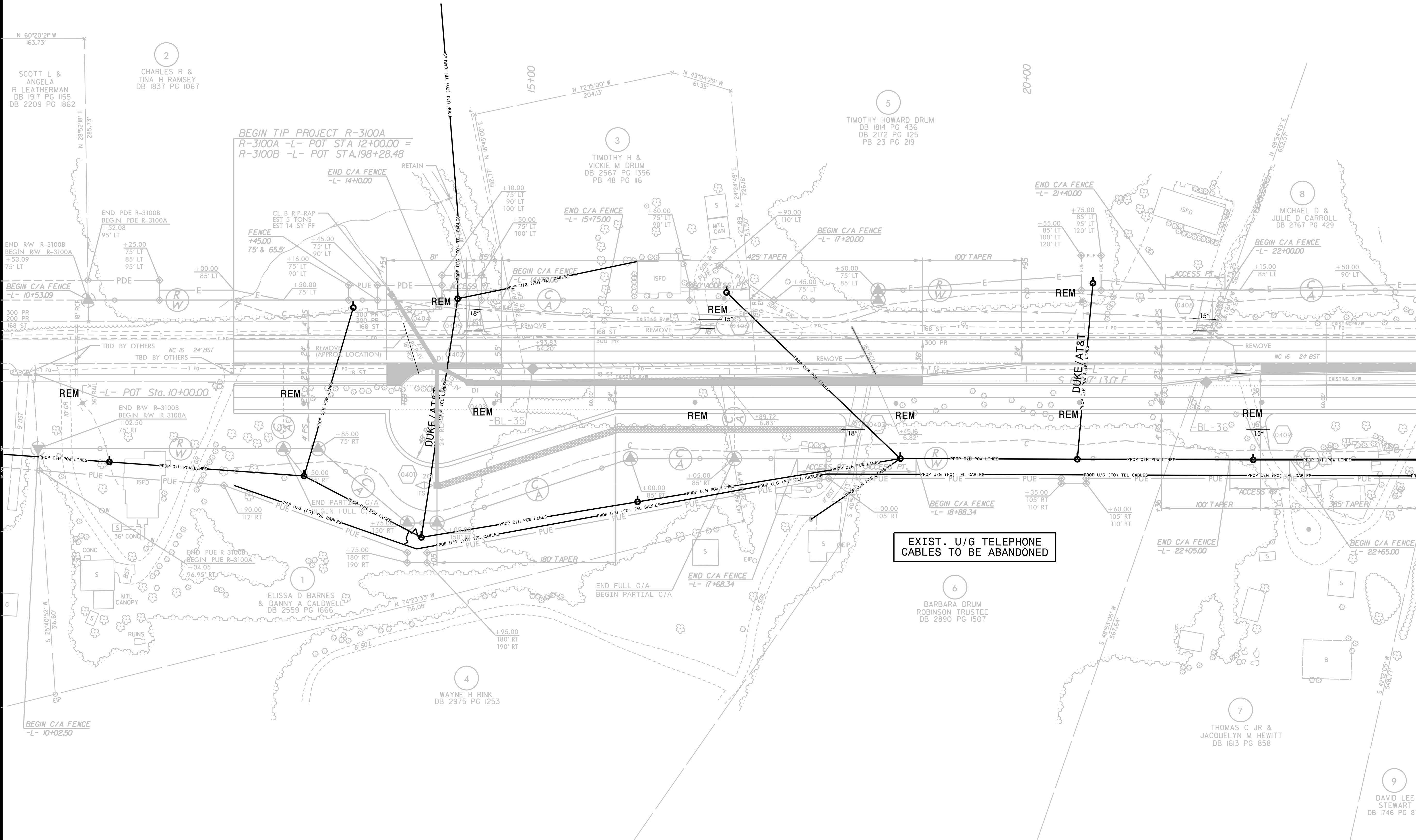
UTILITIES BY OTHERS

NOTE:  
ALL UTILITY WORK SHOWN ON THIS SHEET WILL BE DONE BY OTHERS. NO PAYMENT WILL BE MADE TO THE CONTRACTOR FOR UTILITY WORK SHOWN ON THIS SHEET.

5/14/99

MAD 8/18/8 2007

MATCHLINE -L- STA 24 + 00.00 SEE SHEET UO-03



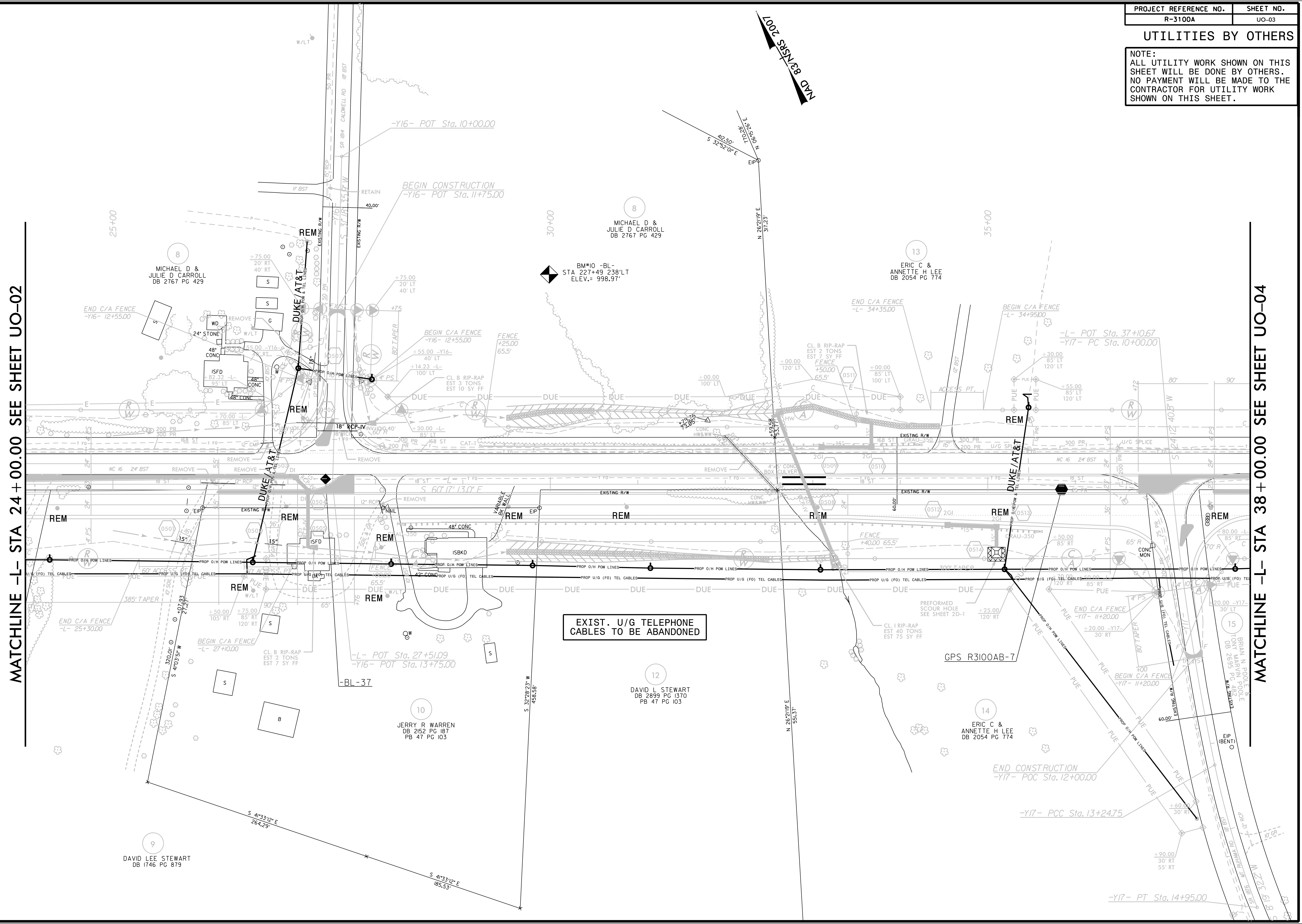
UTILITIES BY OTHERS

NOTE:  
 ALL UTILITY WORK SHOWN ON THIS SHEET WILL BE DONE BY OTHERS.  
 NO PAYMENT WILL BE MADE TO THE CONTRACTOR FOR UTILITY WORK SHOWN ON THIS SHEET.

5/14/99

MATCHLINE -L- STA 24+00.00 SEE SHEET UO-02

MATCHLINE -L- STA 38+00.00 SEE SHEET UO-04



EXIST. U/G TELEPHONE CABLES TO BE ABANDONED

SYNTHETIC  
 SECTION  
 OF  
 THE  
 STATE  
 OF  
 NORTH  
 CAROLINA





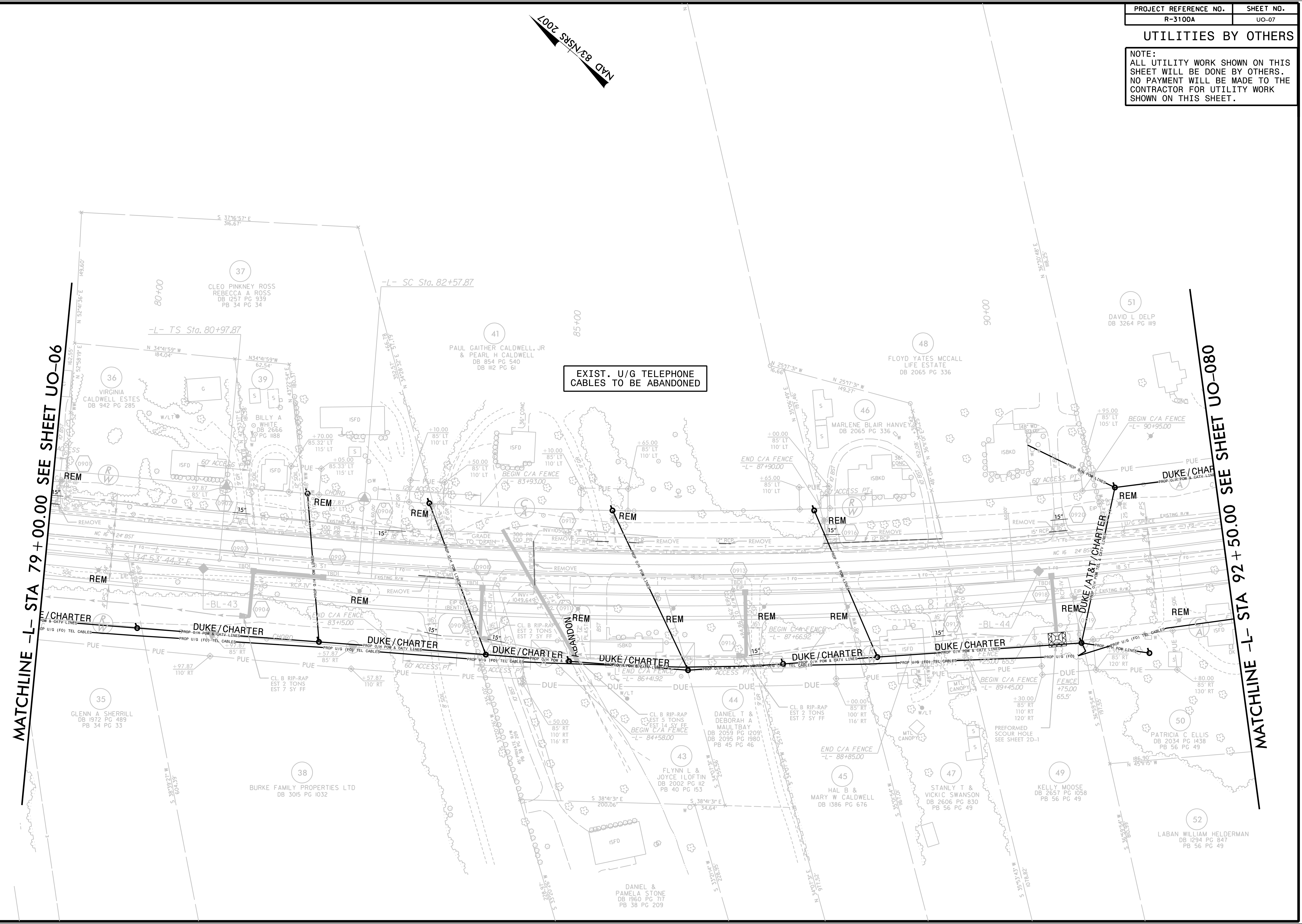


UTILITIES BY OTHERS

NOTE:  
 ALL UTILITY WORK SHOWN ON THIS SHEET WILL BE DONE BY OTHERS.  
 NO PAYMENT WILL BE MADE TO THE CONTRACTOR FOR UTILITY WORK SHOWN ON THIS SHEET.

5/14/99

REVISIONS  
 DATE: 1-16-2015 - PARCEL 37, 40, REMOVED. PARCEL 40, PRIVATE R/W, AS CURRENT PROPERTY OWNER NOW OWNS BOTH PARCELS INVOLVED.



EXIST. U/G TELEPHONE CABLES TO BE ABANDONED

MATCHLINE -L- STA 79 + 00.00 SEE SHEET UO-06

MATCHLINE -L- STA 92 + 50.00 SEE SHEET UO-080

NAD 83/NSRS 2007



UTILITIES BY OTHERS

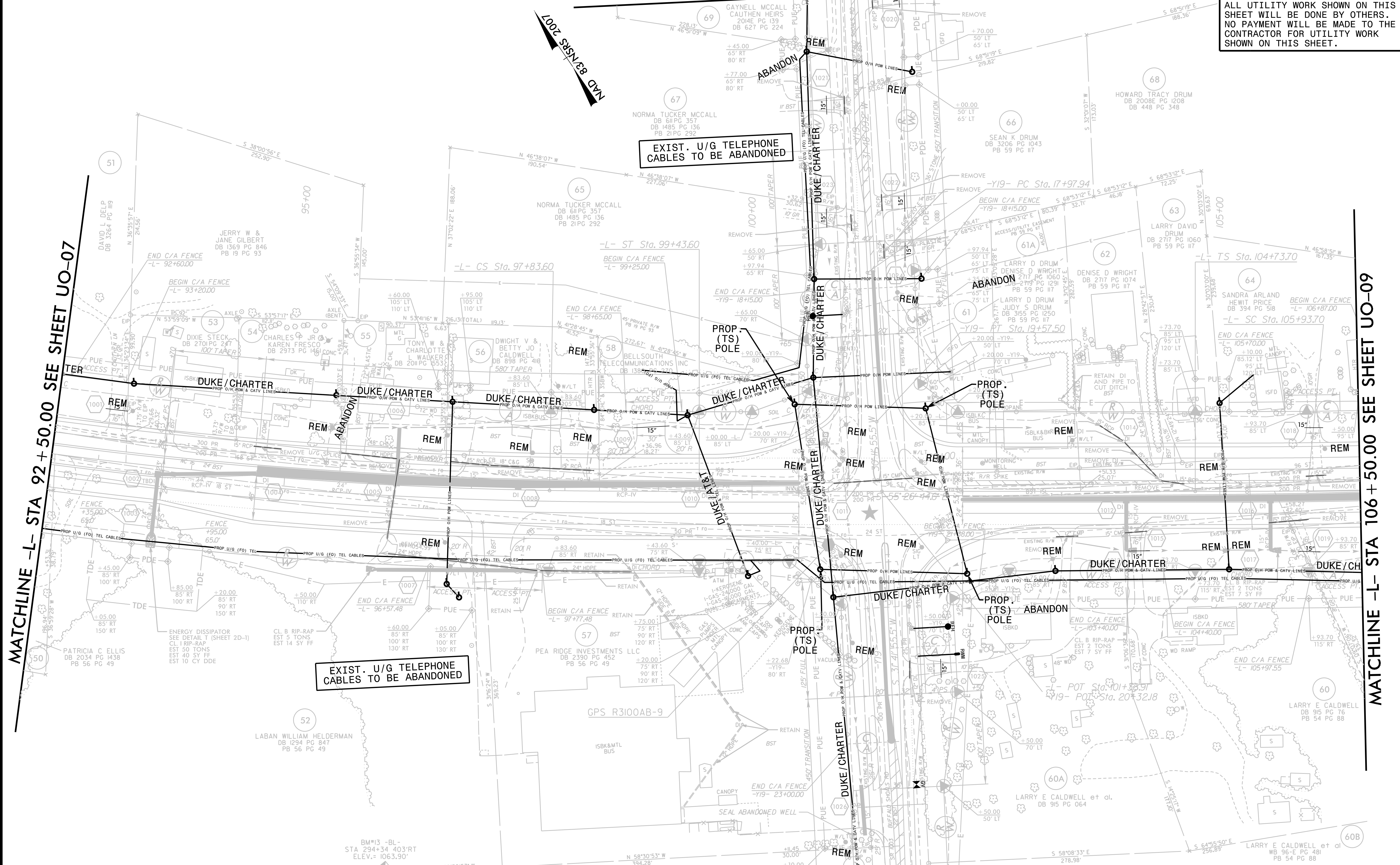
NOTE:  
ALL UTILITY WORK SHOWN ON THIS SHEET WILL BE DONE BY OTHERS. NO PAYMENT WILL BE MADE TO THE CONTRACTOR FOR UTILITY WORK SHOWN ON THIS SHEET.

MATCHLINE -Y19- STA 15+00.00 SEE SHEET UO-19

MATCHLINE -L- STA 92+50.00 SEE SHEET UO-07

MATCHLINE -L- STA 106+50.00 SEE SHEET UO-09

MATCHLINE -Y19- STA 24+50.00 SEE SHEET UO-19



5/14/99

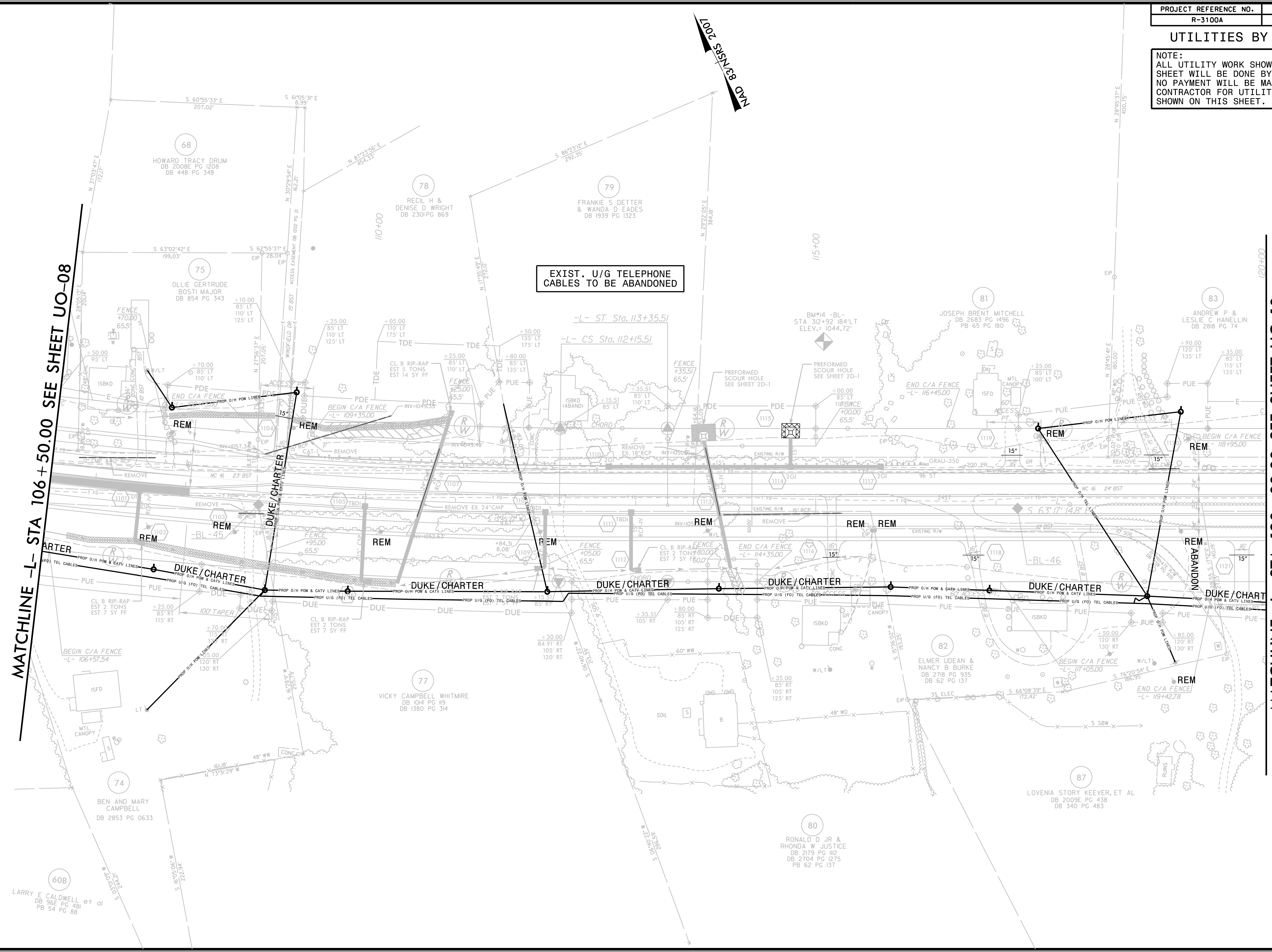


UTILITIES BY OTHERS

NOTE:  
 ALL UTILITY WORK SHOWN ON THIS SHEET WILL BE DONE BY OTHERS. NO PAYMENT WILL BE MADE TO THE CONTRACTOR FOR UTILITY WORK SHOWN ON THIS SHEET.

REVISIONS  
 DATE: 1-16-2015 - PARCEL 82.B7, REVISED A PORTION OF PARCEL 82 TO PARCEL 87 (LOVENIA STORY KEEVER, ET AL)

SYSTEMS  
 5/14/99



MATCHLINE -L- STA 106 + 50.00 SEE SHEET UO-08

MATCHLINE -L- STA 120 + 00.00 SEE SHEET UO-10

EXIST. U/G TELEPHONE CABLES TO BE ABANDONED

-L- ST Sta. 113+35.51

-L- CS Sta. 112+15.51

60B  
 LARRY E CALDWELL et al  
 DB 96E PG 481  
 PB 54 PG 88

74  
 BEN AND MARY CAMPBELL  
 DB 2853 PG 0633

77  
 VICKY CAMPBELL WHITMIRE  
 DB 1014 PG 119  
 DB 1380 PG 314

75  
 OLLIE GERTRUDE BOSTI MAJOR  
 DB 854 PG 343

78  
 RECIL H & DENISE D WRIGHT  
 DB 2301 PG 869

79  
 FRANKIE S DETTER & WANDA D EADES  
 DB 1939 PG 1323

82  
 ELMER UDEAN & NANCY B BURKE  
 DB 2718 PG 935  
 DB 62 PG 137

80  
 RONALD D JR & RHONDA W JUSTICE  
 DB 2179 PG 112  
 DB 2704 PG 1275  
 PB 62 PG 137

81  
 JOSEPH BRENT MITCHELL  
 DB 2683 PG 1496  
 PB 63 PG 180

83  
 ANDREW P & LESLIE C HANELLIN  
 DB 2818 PG 74

87  
 LOVENIA STORY KEEVER, ET AL  
 DB 2009E PG 438  
 DB 340 PG 483

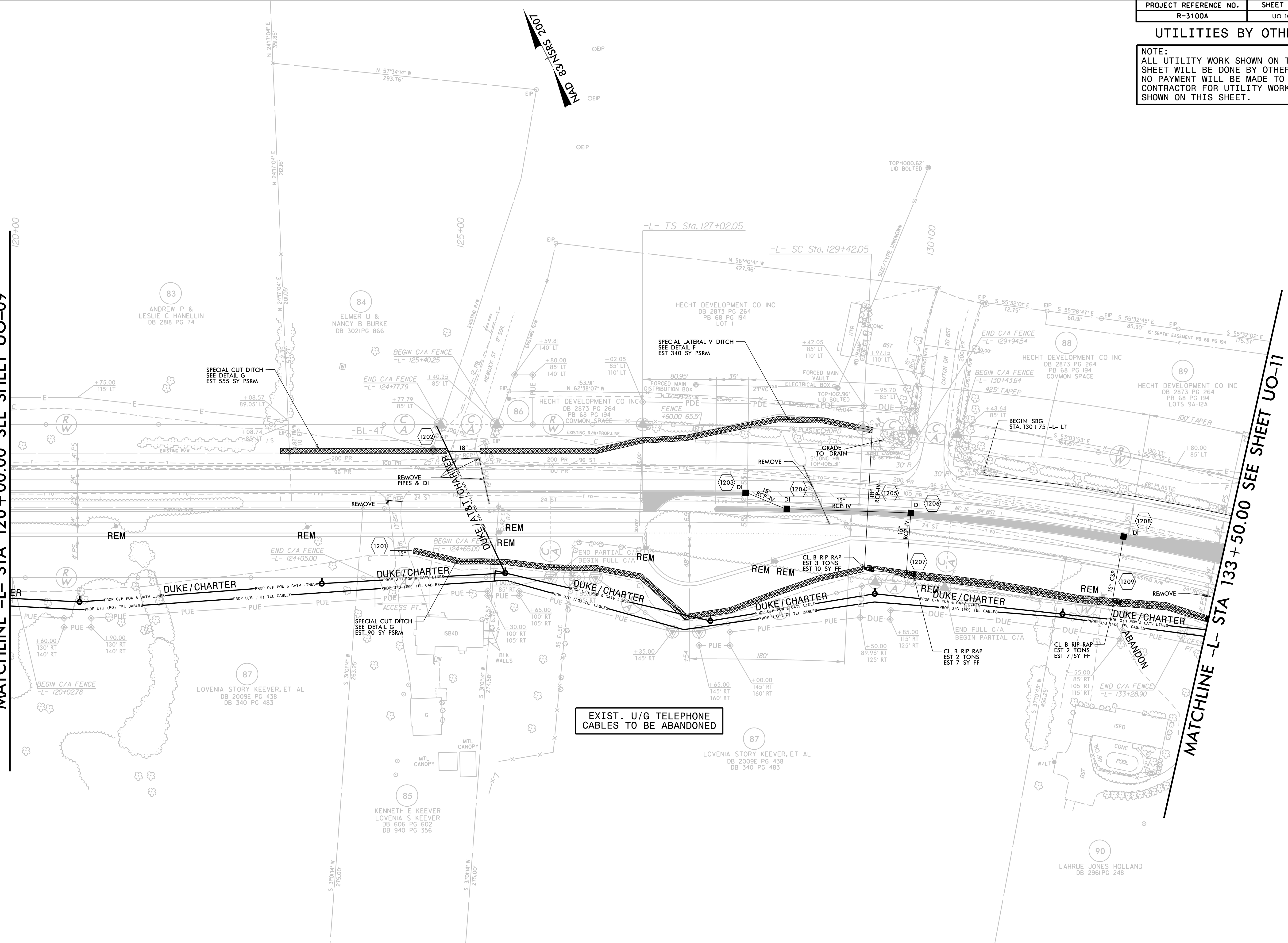
UTILITIES BY OTHERS

NOTE:  
 ALL UTILITY WORK SHOWN ON THIS SHEET WILL BE DONE BY OTHERS.  
 NO PAYMENT WILL BE MADE TO THE CONTRACTOR FOR UTILITY WORK SHOWN ON THIS SHEET.

5/14/99

REVISIONS  
 DATE: 1-16-2015 - PARCEL 82,87,REVISED A PORTION OF PARCEL 82 TO PARCEL 87 (LOVENIA STORY KEEVER,ET AL)

MATCHLINE -L- STA 120+00.00 SEE SHEET UO-09



MATCHLINE -L- STA 133+50.00 SEE SHEET UO-11

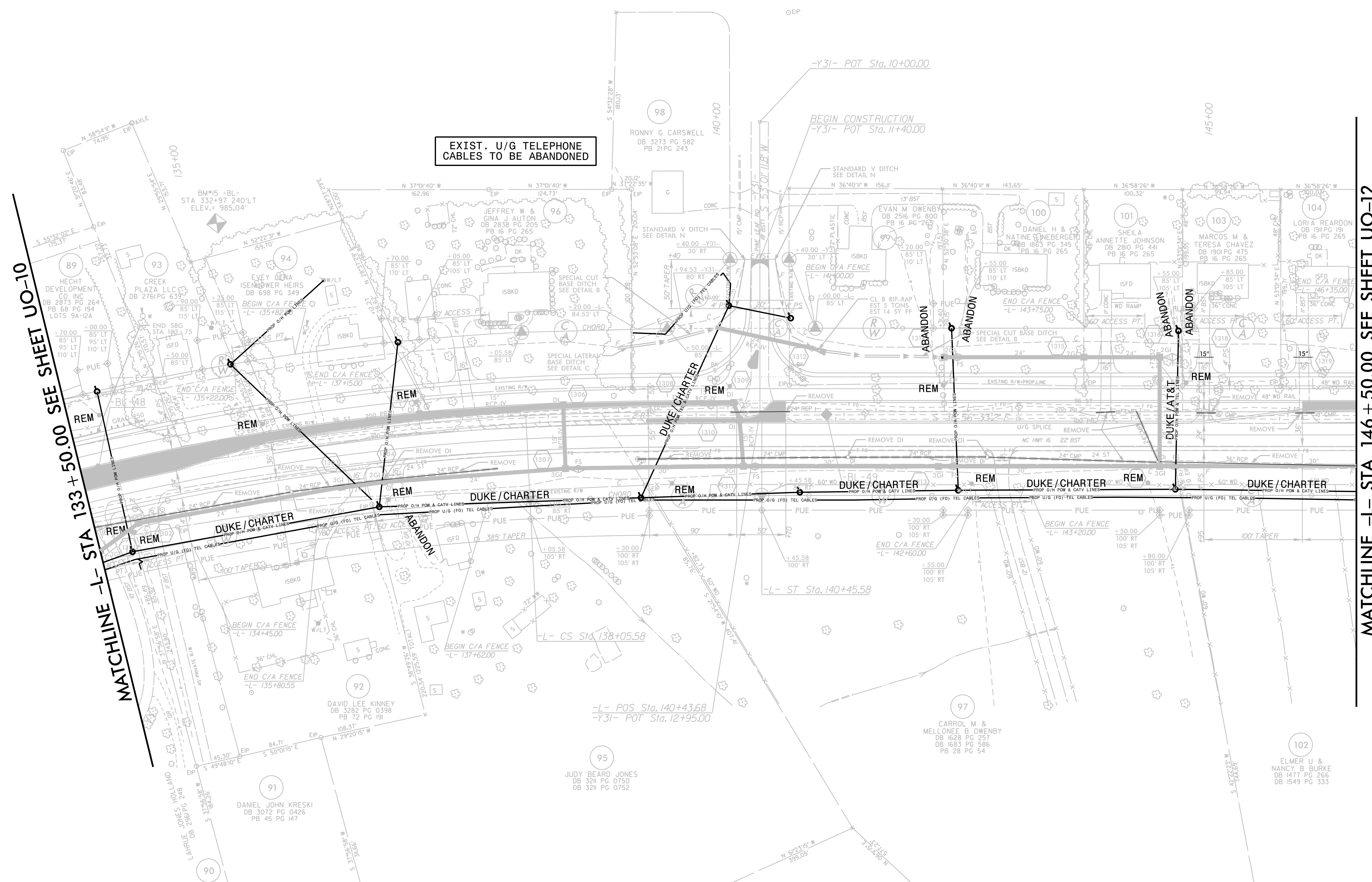
EXIST. U/G TELEPHONE CABLES TO BE ABANDONED

UTILITIES BY OTHERS

NOTE: ALL UTILITY WORK SHOWN ON THIS SHEET WILL BE DONE BY OTHERS. NO PAYMENT WILL BE MADE TO THE CONTRACTOR FOR UTILITY WORK SHOWN ON THIS SHEET.

5/14/99

MAD 8/31/88 2007



MATCHLINE -L- STA 133 +50.00 SEE SHEET UO-10

MATCHLINE -L- STA 146 +50.00 SEE SHEET UO-12

EXIST. U/G TELEPHONE CABLES TO BE ABANDONED

-L- POS Sta. 140+43.68  
-Y31- POT Sta. 12+95.00

-L- ST Sta. 140+45.58

BEGIN CONSTRUCTION  
-Y31- POT Sta. 11+40.00

-Y31- POT Sta. 10+00.00

MATCHLINE -L- STA 133 +50.00 SEE SHEET UO-10

MATCHLINE -L- STA 146 +50.00 SEE SHEET UO-12

SYTIME  
DNDN  
\*\*\*\*\*

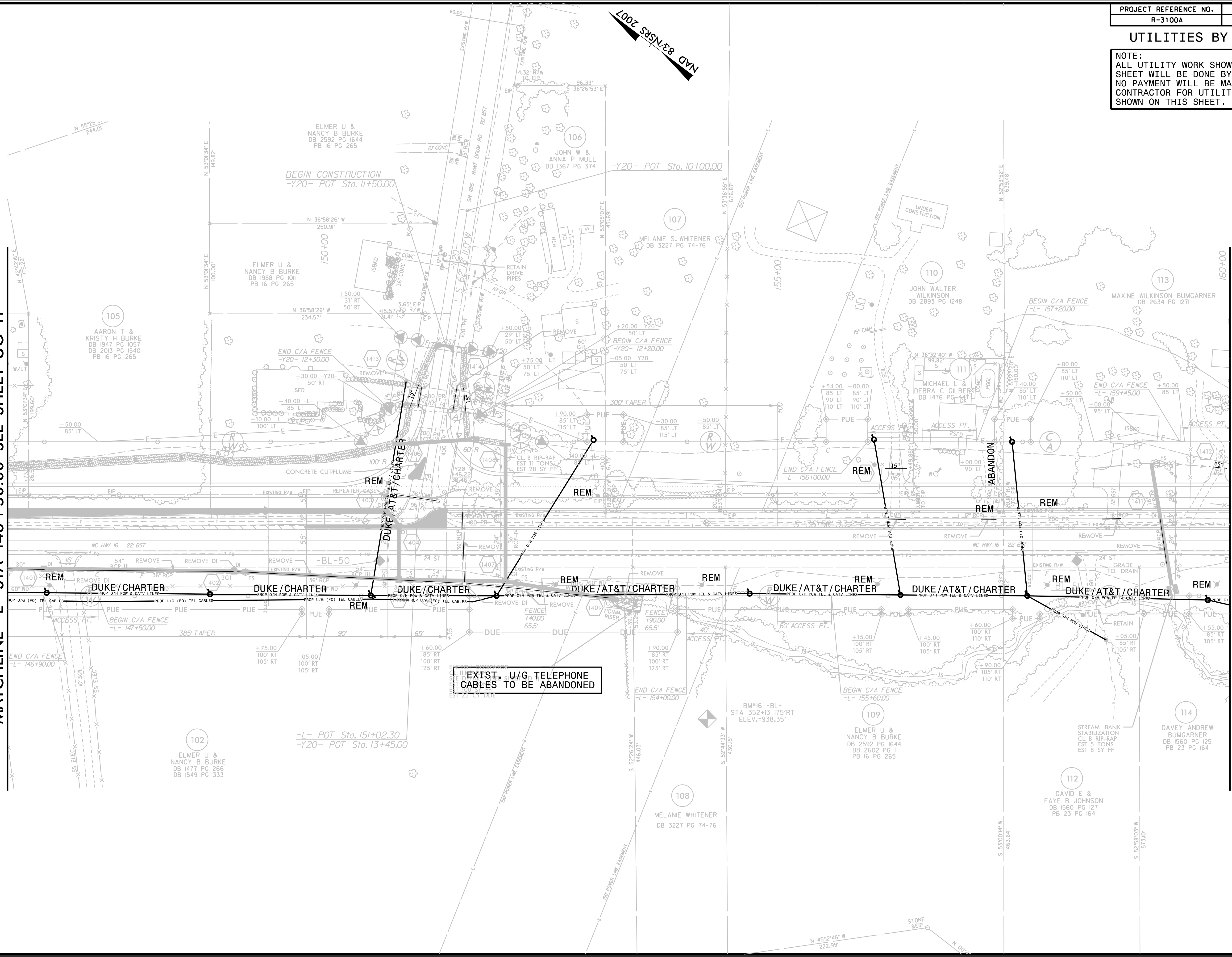
UTILITIES BY OTHERS

NOTE:  
 ALL UTILITY WORK SHOWN ON THIS SHEET WILL BE DONE BY OTHERS.  
 NO PAYMENT WILL BE MADE TO THE CONTRACTOR FOR UTILITY WORK SHOWN ON THIS SHEET.

5/14/99

MATCHLINE -L- STA 146 + 50.00 SEE SHEET UO-11

MATCHLINE -L- STA 160 + 00.00 SEE SHEET UO-13



EXIST. U/G TELEPHONE CABLES TO BE ABANDONED

NAD 83/NSRS 2007

SYSTEMS

UTILITIES BY OTHERS

NOTE:  
 ALL UTILITY WORK SHOWN ON THIS SHEET WILL BE DONE BY OTHERS.  
 NO PAYMENT WILL BE MADE TO THE CONTRACTOR FOR UTILITY WORK SHOWN ON THIS SHEET.

5/14/99

MATCHLINE -L- STA 160 + 00.00 SEE SHEET UO-12

MATCHLINE -L- STA 173 + 50.00 SEE SHEET UO-14



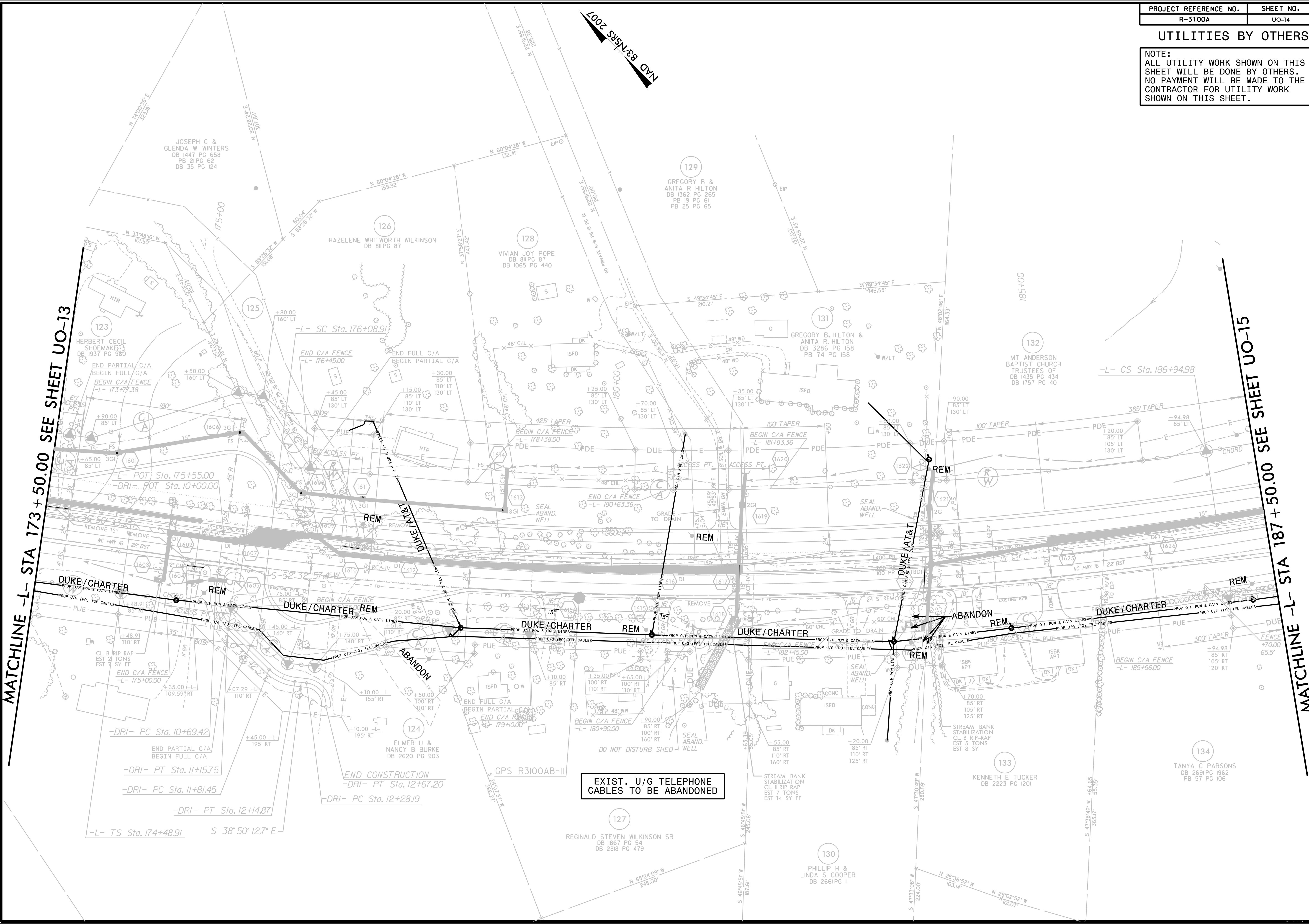
MAD 8/31/88 2007

**UTILITIES BY OTHERS**

**NOTE:**  
 ALL UTILITY WORK SHOWN ON THIS SHEET WILL BE DONE BY OTHERS. NO PAYMENT WILL BE MADE TO THE CONTRACTOR FOR UTILITY WORK SHOWN ON THIS SHEET.

DATE: 6-16-2015 - INCREASED PUE ON PARCEL 127  
 DATE: 9-25-2015 - CHANGED PDE TO DUE ON PARCELS 128, 131 & 132; REVISED PROPERTY LINES AND CHANGED PROPERTY OWNER NAMES ON PARCEL 131 TO GREGORY B. HILTON & ANITA R. HILTON  
 DATE: 5-31-2016 - PARCEL 127; ADDED DRIVEWAY, DRIVEPUE, AND A 40' ACCESS BREAK -L- 179+10 TO 179+50 RT; ADDED "DO NOT DISTURB SHED" NOTE AT -L- 180+75 RT.

5/14/09



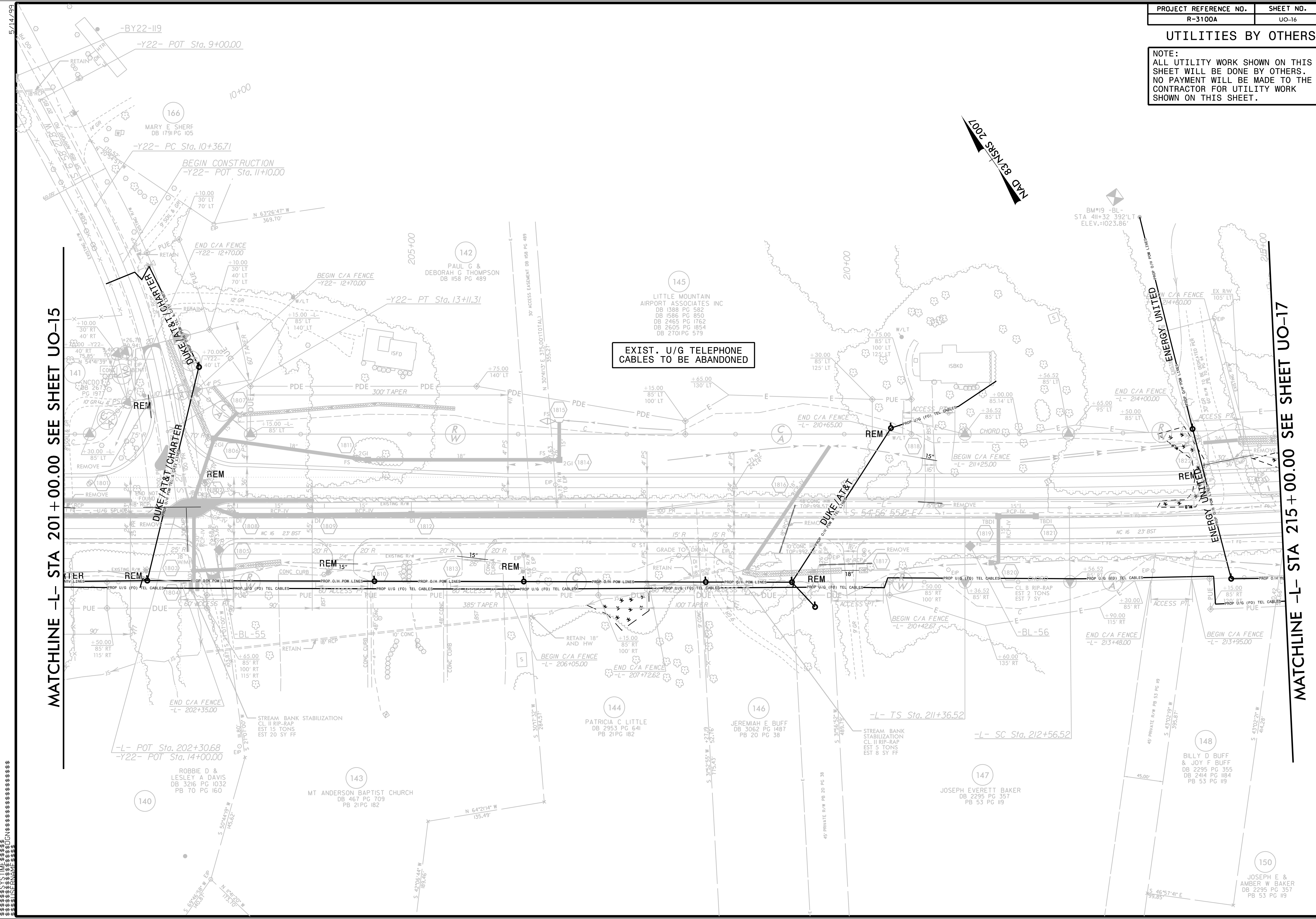
\*\*\*\*\*  
 SYSTEM TIME \*\*\*\*\*  
 \*\*\*\*\*  
 \*\*\*\*\*





UTILITIES BY OTHERS

NOTE:  
ALL UTILITY WORK SHOWN ON THIS SHEET WILL BE DONE BY OTHERS.  
NO PAYMENT WILL BE MADE TO THE CONTRACTOR FOR UTILITY WORK SHOWN ON THIS SHEET.



5.14.199

SYSTEMS



**UTILITIES BY OTHERS**

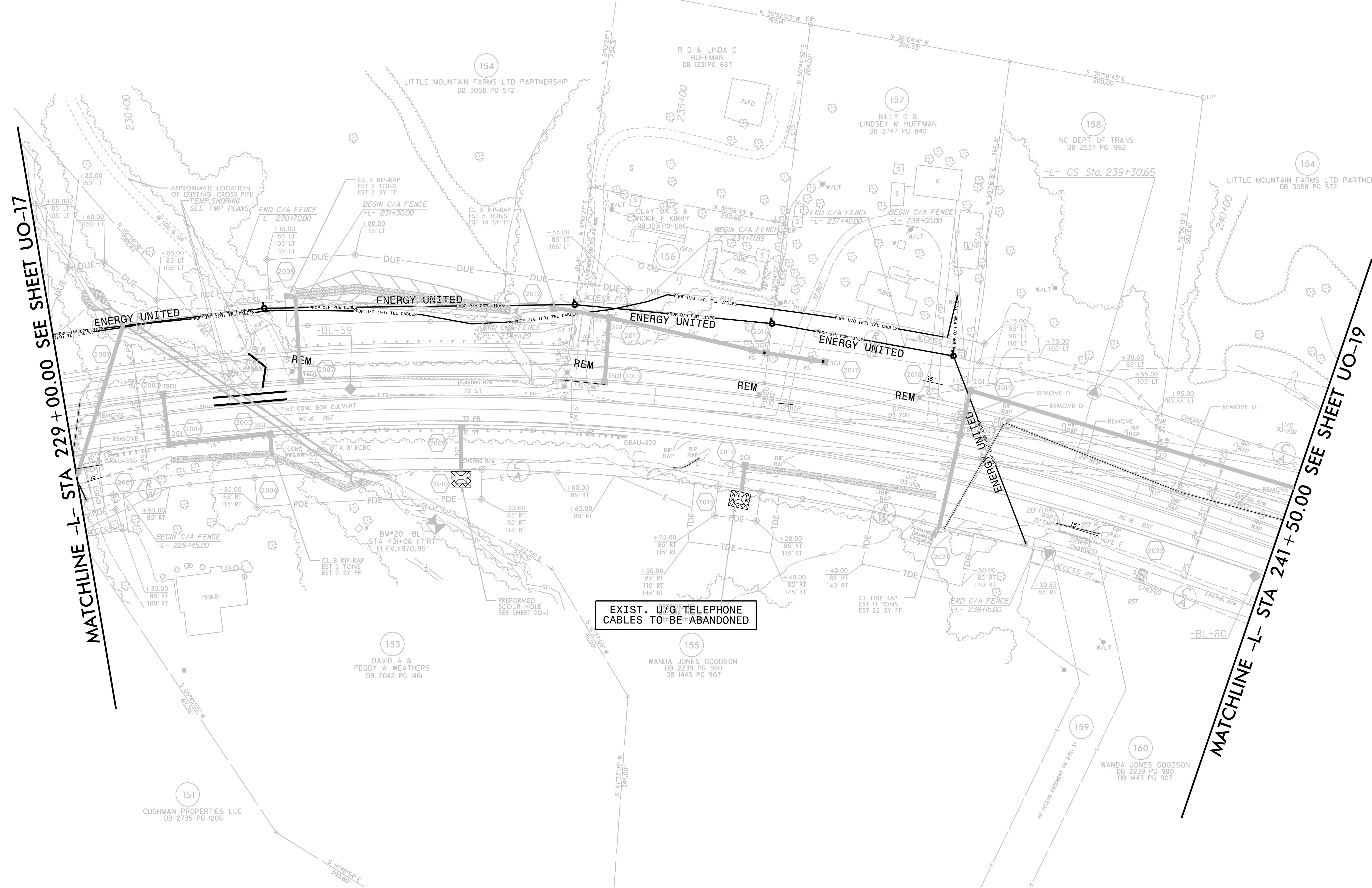
**NOTE:**  
 ALL UTILITY WORK SHOWN ON THIS SHEET WILL BE DONE BY OTHERS. NO PAYMENT WILL BE MADE TO THE CONTRACTOR FOR UTILITY WORK SHOWN ON THIS SHEET.

5/14/09

DATE: 6-16-2015 - REV. REVISION REQUEST FOR PLAN CHANGES DURING THE INITIAL CONTRACTS SUBMITTED ON 4-21-2015 CHANGE PARCEL 161 TO PARCEL 154  
 DATE: 2-5-2016 - PARCEL 157 ACCESS POINT - STA. 236+10.00 TO STA. 236+70.00 LT MOVED TO -L- STA. 237+40.00 TO 238+00.00 LT  
 DATE: 3-31-2016 - PARCEL 154 ADDED ACCESS POINT -L- STA. 240+50.00 TO 241+10.00 LT

MATCHLINE -L- STA 229 + 00.00 SEE SHEET UO-17

MATCHLINE -L- STA 241 + 50.00 SEE SHEET UO-19



**EXIST. U/G TELEPHONE CABLES TO BE ABANDONED**

5/14/99

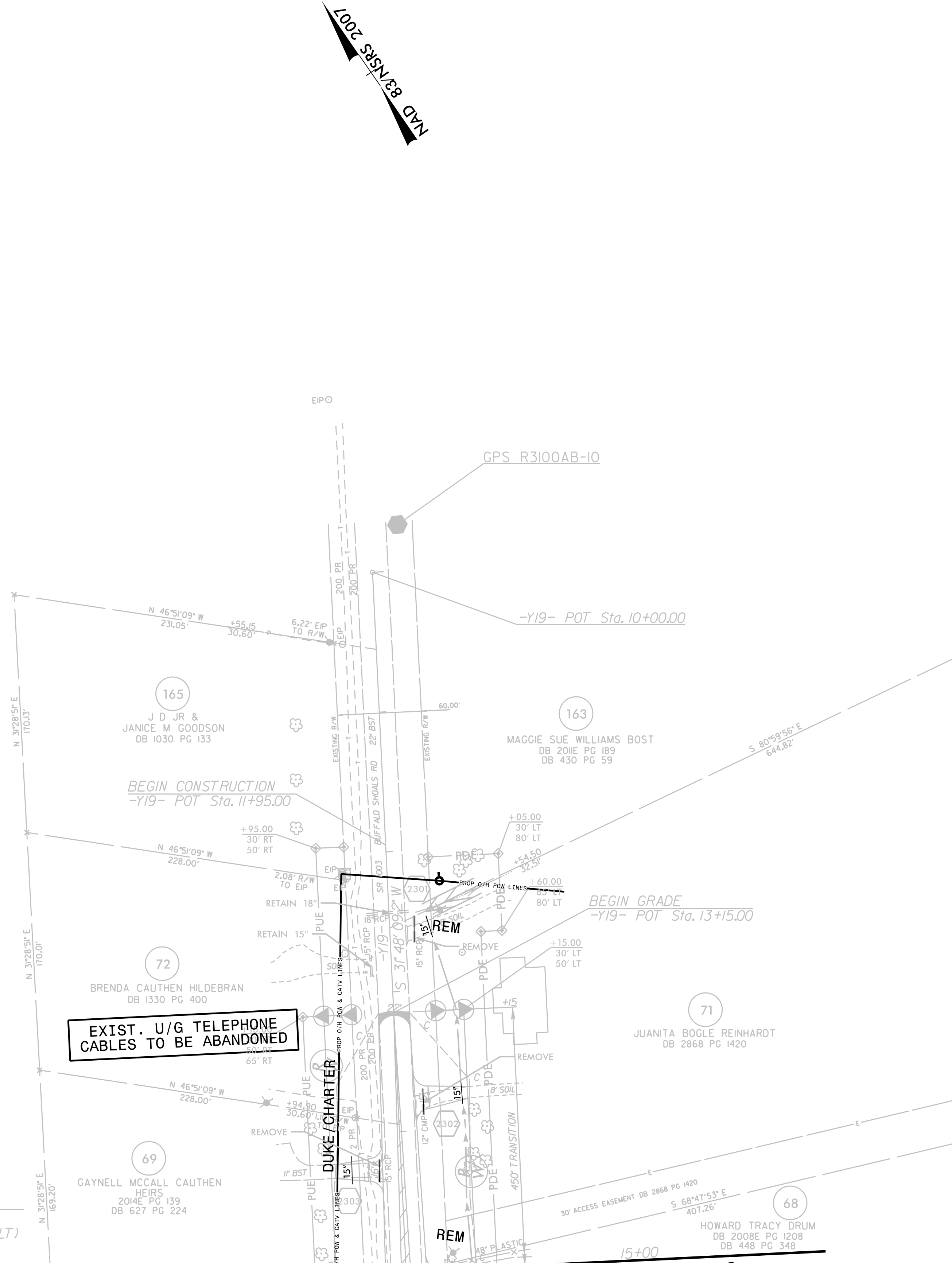
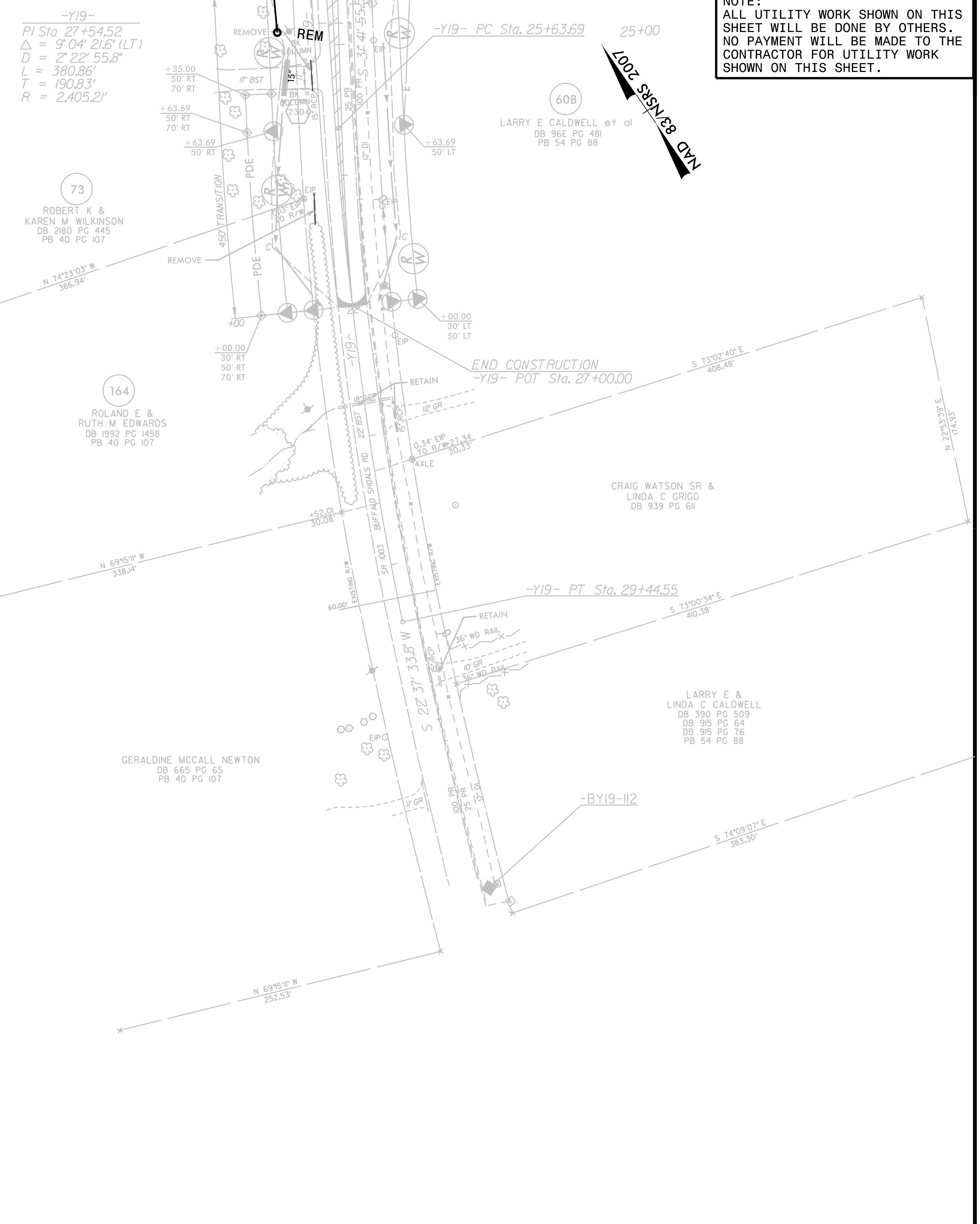
MAD 8/31/98 C/W

PROJECT REFERENCE NO. R-3100A	SHEET NO. UO-19
----------------------------------	--------------------

UTILITIES BY OTHERS

NOTE:  
ALL UTILITY WORK SHOWN ON THIS SHEET WILL BE DONE BY OTHERS. NO PAYMENT WILL BE MADE TO THE CONTRACTOR FOR UTILITY WORK SHOWN ON THIS SHEET.

MATCHLINE -Y19- STA 24+50.00 SEE SHEET UO-08



MATCHLINE -Y19- STA 15+00.00 SEE SHEET UO-08

SYSTEMS DESIGN

109+04.95  
 $\Delta = 5' 34' 23.5''$  (LT)  
 $D = 203' 25.6''$   
 $L = 21.80'$   
 $T = 311.24'$   
 $R = 5,420.00'$