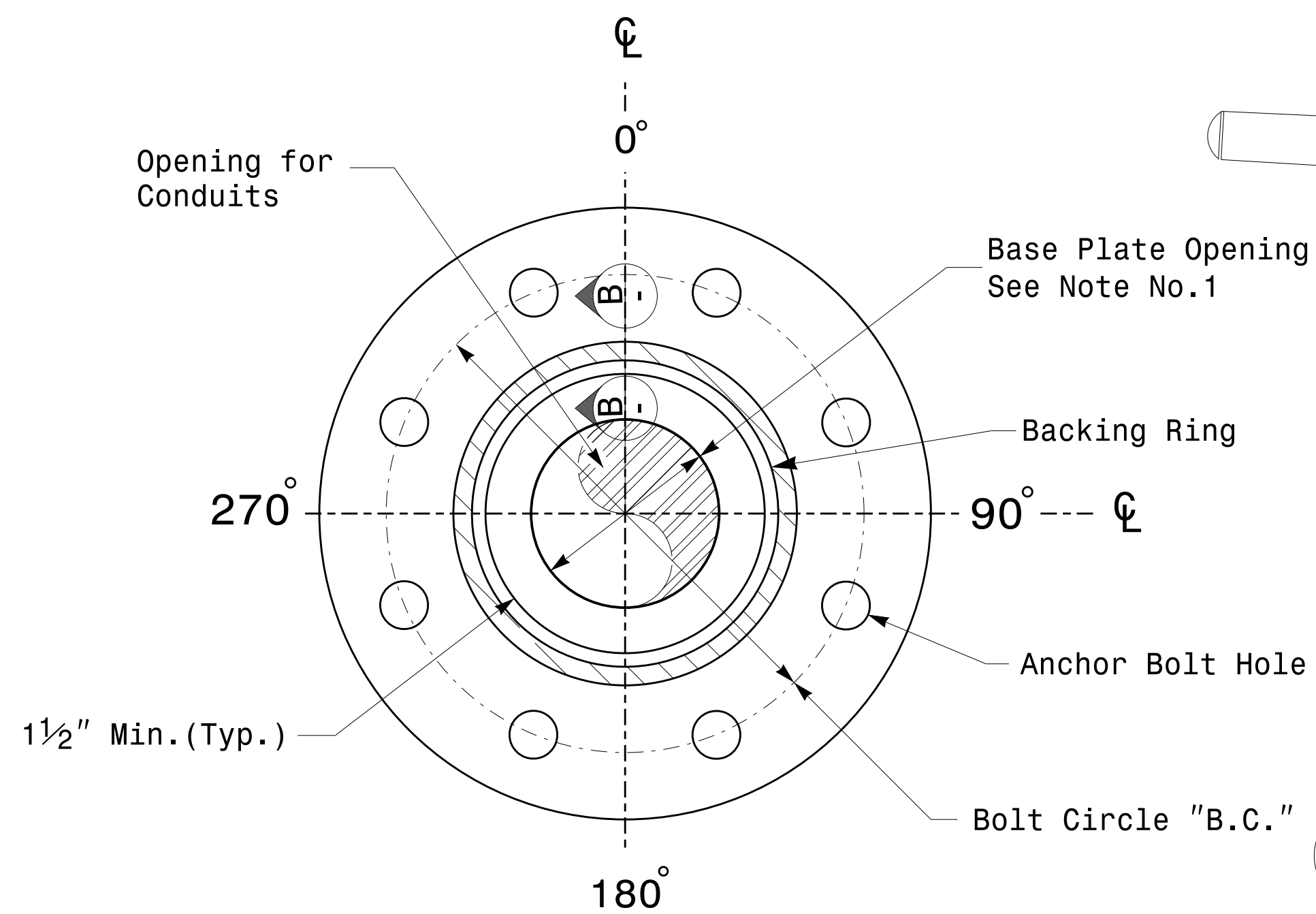
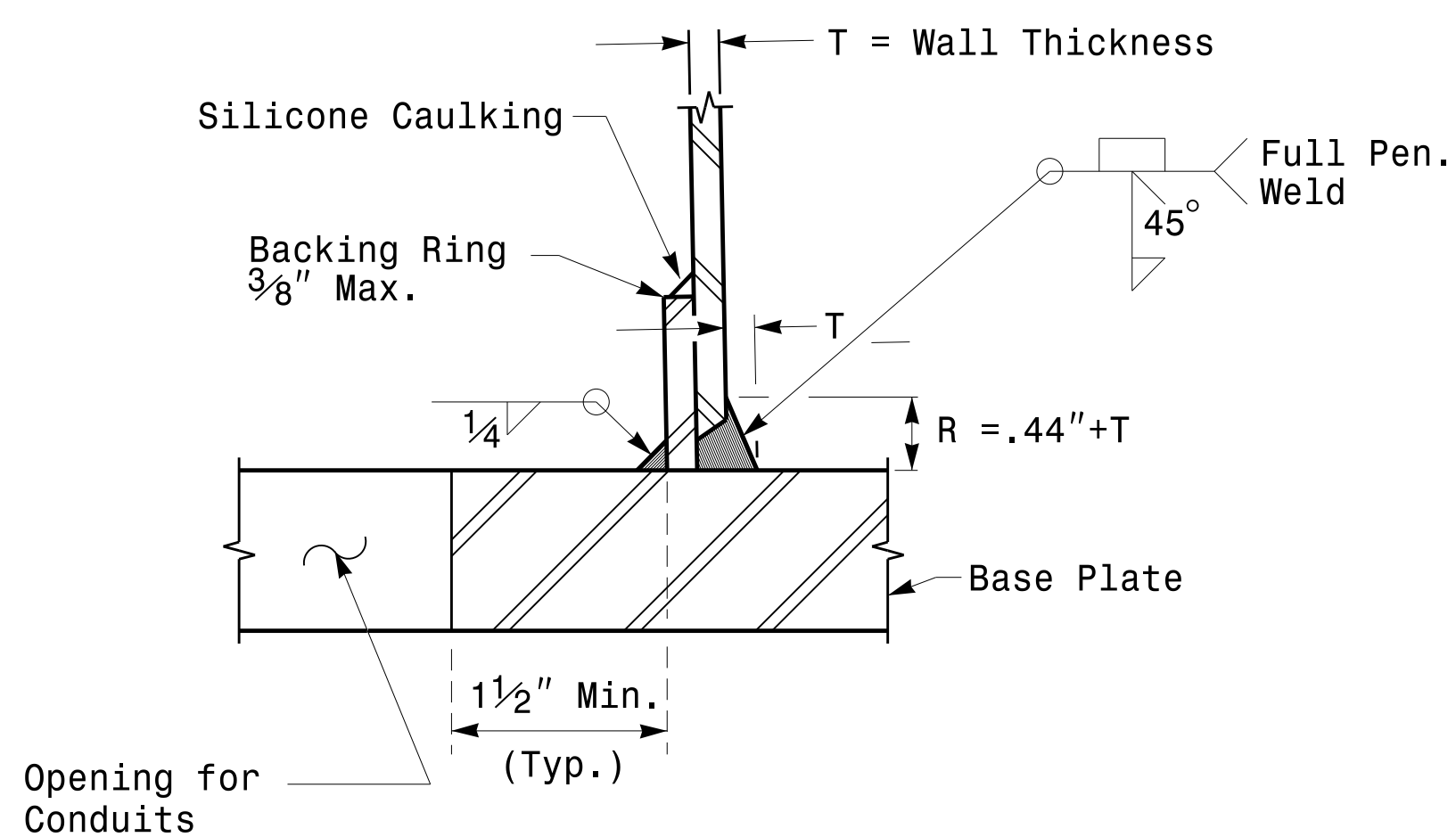


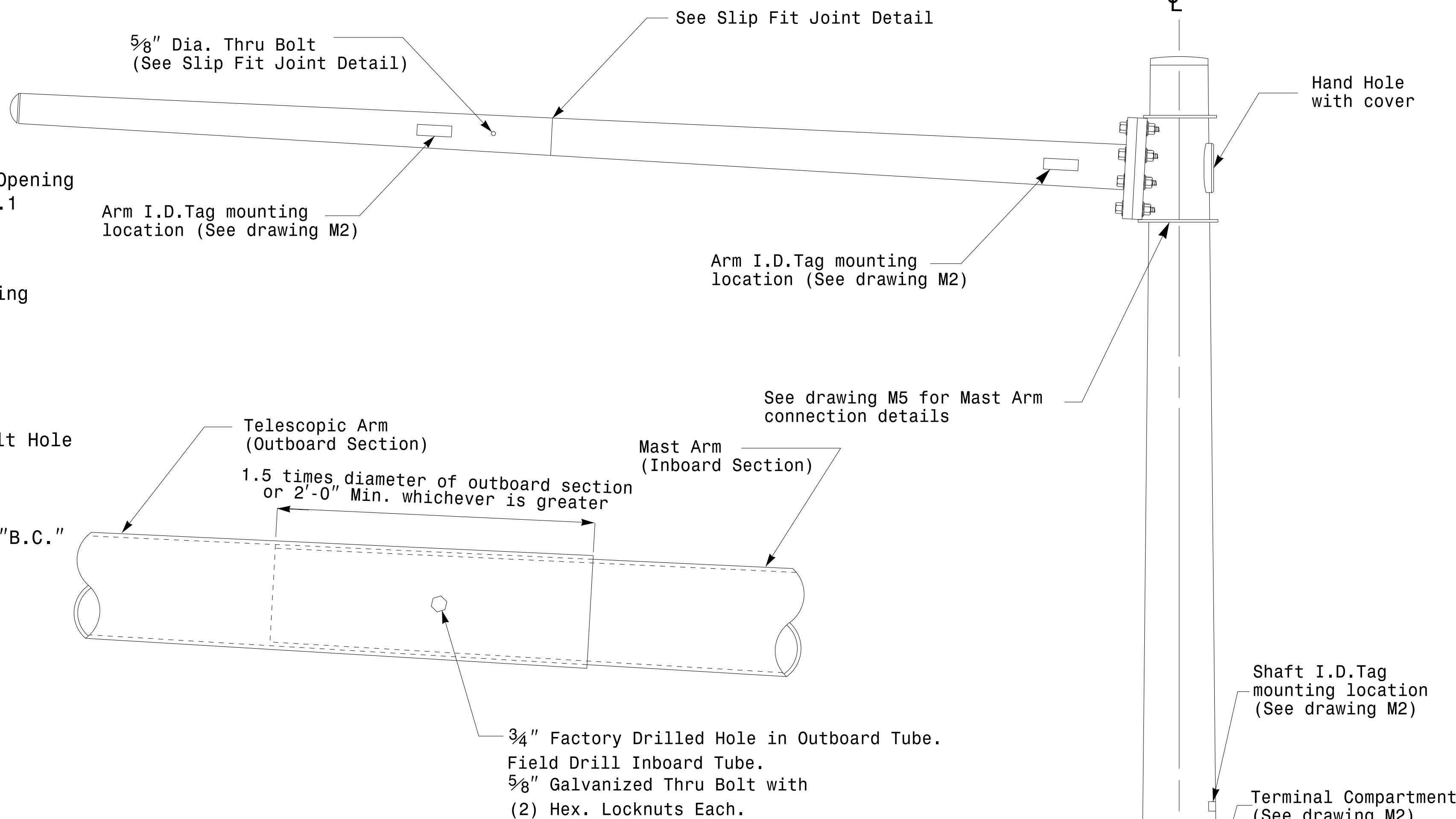
Note:  
1. Opening in pole base plate shall be equal to pole base inside diameter minus 3 1/2" but shall not be less than 8 1/2".



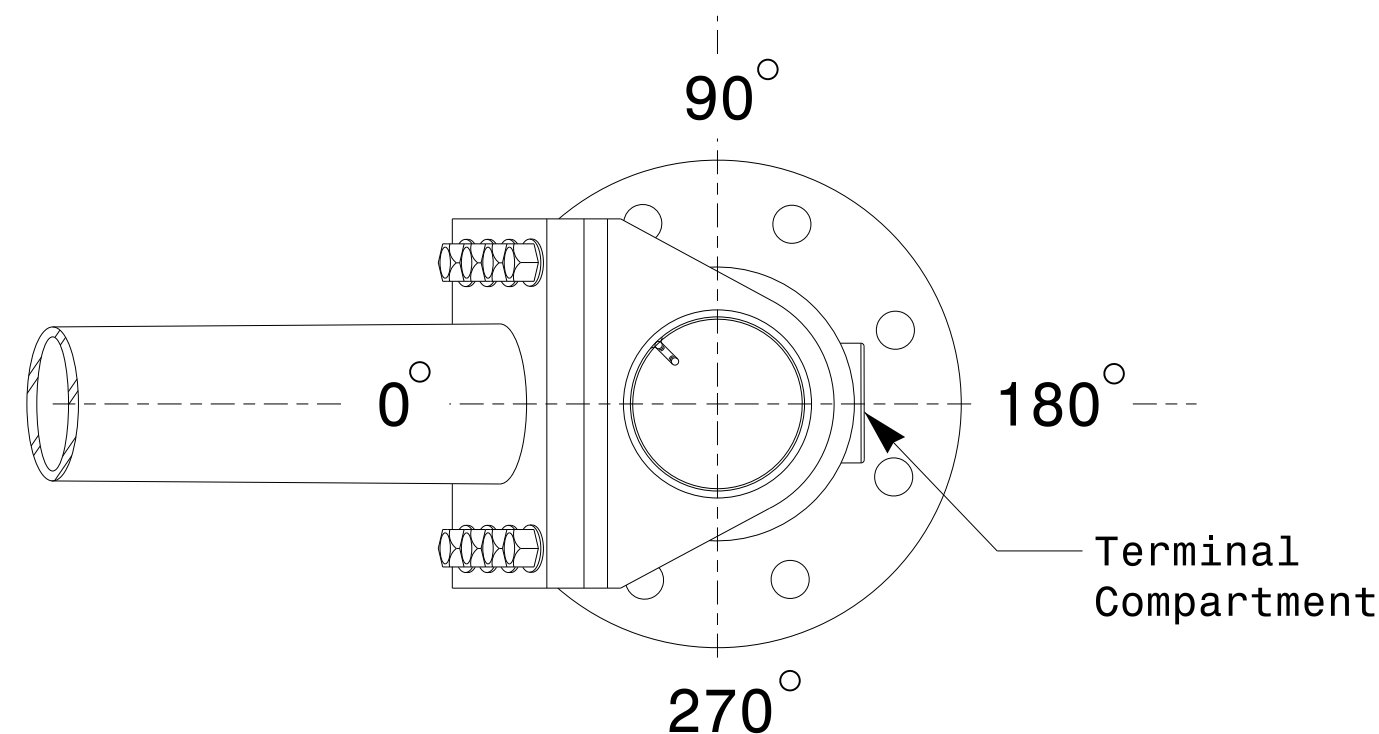
**Section A-A**  
**Pole Base Plate Details**



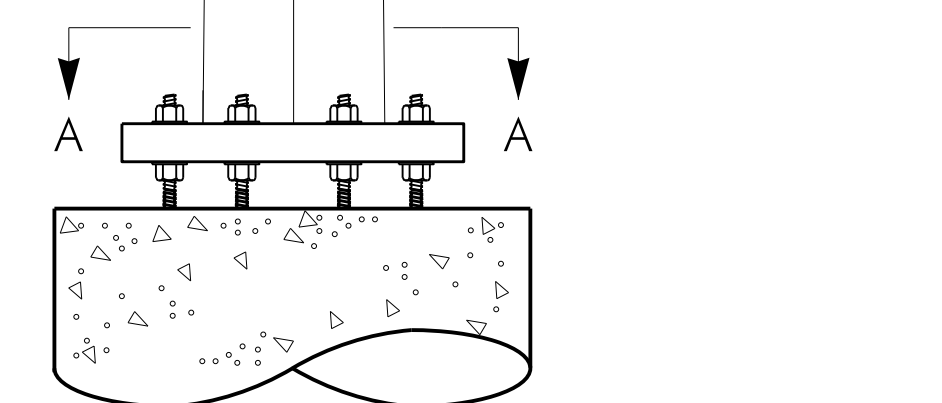
**Section B-B**  
**(Pole Attachment to Base Plate)**  
**Full-Penetration Groove Weld Detail**



**Slip Fit Joint Detail for Mast Arm**



**Mast Arm Radial Orientation**



**Mast Arm Pole**

**Fabrication Details – Mast Arm Poles**

<p>Prepared in the Offices of:</p> <p>750 N. Greenfield Pkwy, Garner, NC 27529</p>	<p>Typical Fabrication Details For Mast Arm Poles</p>		<p>SEAL</p> <p>DocuSigned by <i>Dibesh C. Sarkar</i></p> <p>44E8E32E147E4C4...</p>					
	<p>PLAN DATE: FEBRUARY 2016</p> <p>DESIGNED BY: K.C. DURIGON</p> <p>PREPARED BY: N. BITTING</p> <p>REVIEWED BY: D.C. SARKAR</p>	<p>REVISIONS</p> <table border="1"> <tr> <th>INIT.</th> <th>DATE</th> </tr> <tr> <td> </td> <td> </td> </tr> <tr> <td> </td> <td> </td> </tr> </table>		INIT.	DATE			
INIT.	DATE							

17-FEB-2016 16:05:13 TSC04115 Signal&Sign Design Section Eastern Region\m4 Sheets\2016\2014\_Sig\_M4\_Std\_Fabrication\_Details-Mast\_Arm\_Poles.dgn