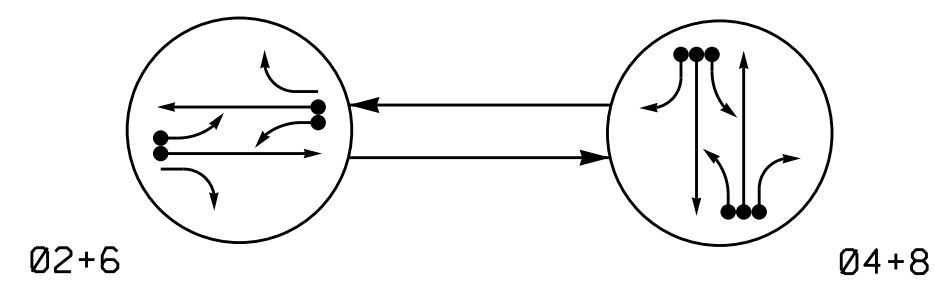


PHASING DIAGRAM



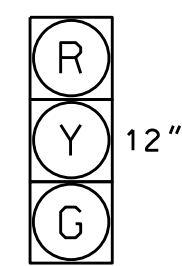
PHASING DIAGRAM DETECTION LEGEND

- ←●→ DETECTED MOVEMENT
- ←→ UNDETECTED MOVEMENT (OVERLAP)
- UNSIGNALIZED MOVEMENT
- ←--- PEDESTRIAN MOVEMENT

SIGNAL FACE	PHASE		
	Ø2+6	Ø4+8	FLIGHT
21, 22	G	R	Y
41, 42	R	G	R
61, 62	G	R	Y
81, 82	R	G	R

SIGNAL FACE I.D.

All Heads L.E.D.



21, 22  
41, 42  
61, 62  
81, 82

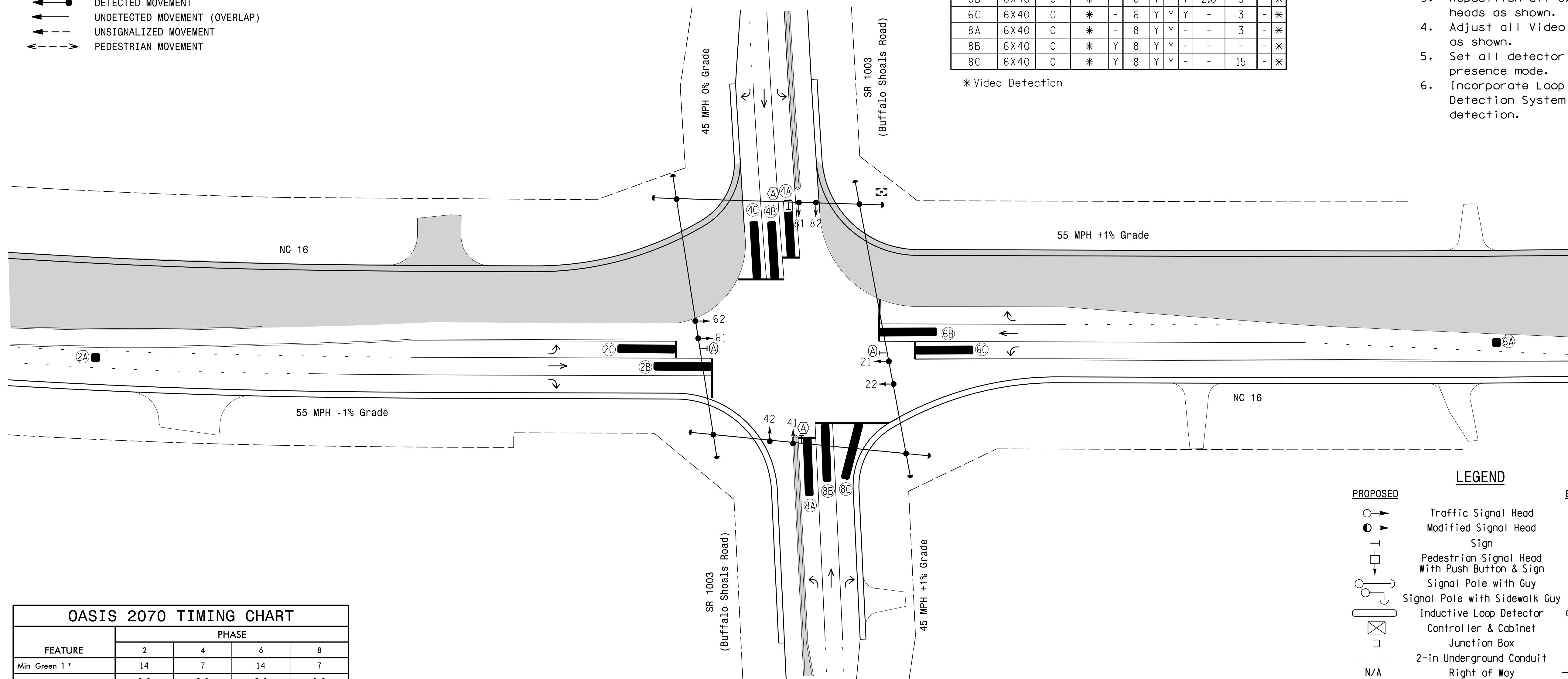
OASIS 2070 LOOP & DETECTOR INSTALLATION CHART												
LOOP	SIZE (FT)	DISTANCE FROM STOPBAR (FT)	TURNS	NEW LOOP	DETECTOR PROGRAMMING						SYSTEM LOOP	NEW CARD
					PHASE	CALLING	EXTENSION	FULL TIME DELAY	STRETCH TIME	DELAY TIME		
2A	6X6	420	*	-	2	Y	Y	-	-	-	-	*
2B	6X40	0	*	-	2	Y	Y	Y	2.0	5	-	*
2C	6X40	0	*	-	2	Y	Y	Y	-	3	-	*
4A	6X40	0	*	-	4	Y	Y	-	-	3	-	*
4B	6X40	0	*	Y	4	Y	Y	-	-	-	-	*
4C	6X40	0	*	Y	4	Y	Y	-	-	15	-	*
6A	6X6	420	*	-	6	Y	Y	-	-	-	-	*
6B	6X40	0	*	-	6	Y	Y	Y	2.0	5	-	*
6C	6X40	0	*	-	6	Y	Y	Y	-	3	-	*
8A	6X40	0	*	-	8	Y	Y	-	-	3	-	*
8B	6X40	0	*	Y	8	Y	Y	-	-	-	-	*
8C	6X40	0	*	Y	8	Y	Y	-	-	15	-	*

\* Video Detection

2 Phase Fully Actuated Isolated

NOTES

- Refer to "Roadway Standard Drawings NCDOT" dated January 2012 and "Standard Specifications for Roads and Structures" dated January 2012.
- Do not program signal for late night flashing operation unless otherwise directed by the Engineer.
- Reposition all existing signal heads as shown.
- Adjust all Video Detection Zones as shown.
- Set all detector units to presence mode.
- Incorporate Loop Emulator Detection System for vehicle detection.



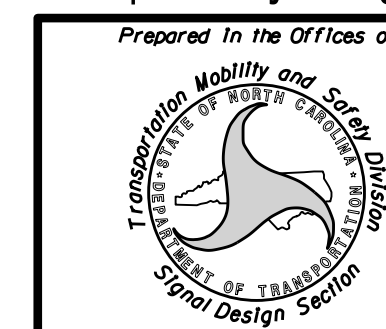
OASIS 2070 TIMING CHART				
FEATURE	PHASE			
	2	4	6	8
Min Green 1 *	14	7	14	7
Extension 1 *	6.0	2.0	6.0	2.0
Max Green 1 *	90	30	90	30
Yellow Clearance	5.3	4.5	5.3	4.5
Red Clearance	1.4	1.6	1.4	1.6
Red Revert	2.0	2.0	2.0	2.0
Walk 1 *	-	-	-	-
Don't Walk 1	-	-	-	-
Seconds Per Actuation *	-	-	-	-
Max Variable Initial *	-	-	-	-
Time Before Reduction *	15	-	15	-
Time To Reduce *	30	-	30	-
Minimum Gap	34	-	34	-
Recall Mode	MIN RECALL	-	MIN RECALL	-
Vehicle Call Memory	YELLOW	-	YELLOW	-
Dual Entry	-	ON	-	ON
Simultaneous Gap	ON	ON	ON	ON

\* These values may be field adjusted. Do not adjust Min Green and Extension times for phases 2 and 6 lower than what is shown. Min Green for all other phases should not be lower than 4 seconds.

LEGEND

- | PROPOSED | EXISTING |
|----------|----------|
|          |          |
|          | N/A      |
|          |          |
|          |          |
|          |          |
|          |          |
|          |          |
|          |          |
|          |          |
|          |          |
| N/A      |          |
|          |          |
|          |          |
|          |          |
|          |          |

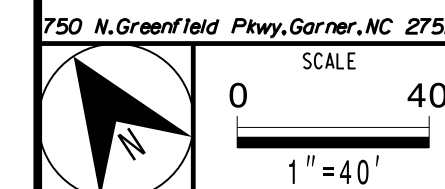
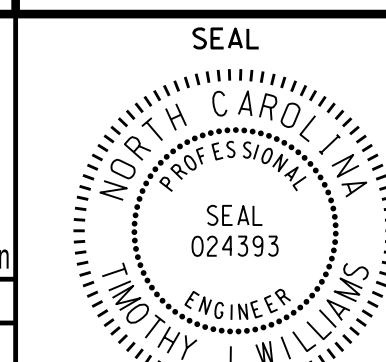
Temporary Signal Design 2 (TCP Phase-II)



NC 16 at SR 1003 (Buffalo Shoals Road)

Division 12 Catawba County Newton  
 PLAN DATE: August 2016 REVIEWED BY: T. Williams  
 PREPARED BY: M. Mahbooba REVIEWED BY:

DOCUMENT NOT CONSIDERED FINAL UNLESS ALL SIGNATURES COMPLETED



REVISIONS	INIT.	DATE

DocuSigned by:  
 T. Williams 10/13/2016  
 SIG. INVENTORY NO. 12-0479 T2