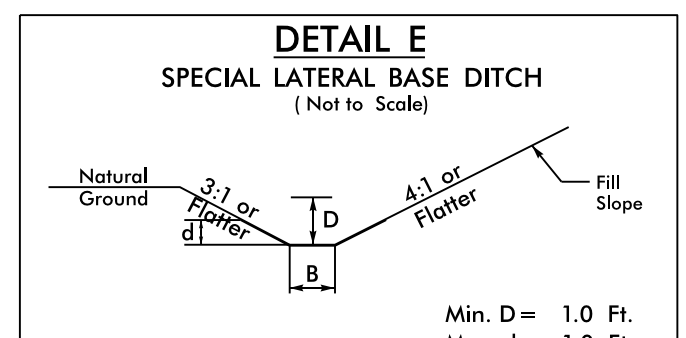
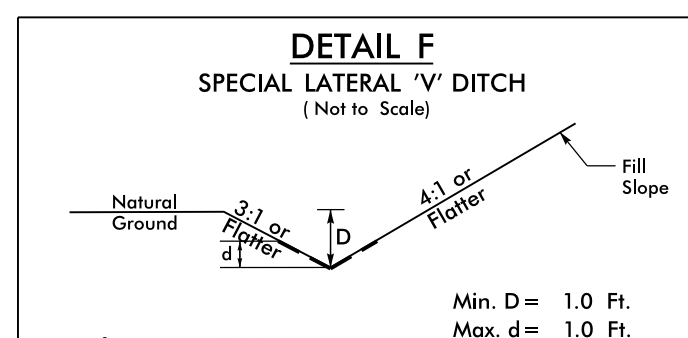


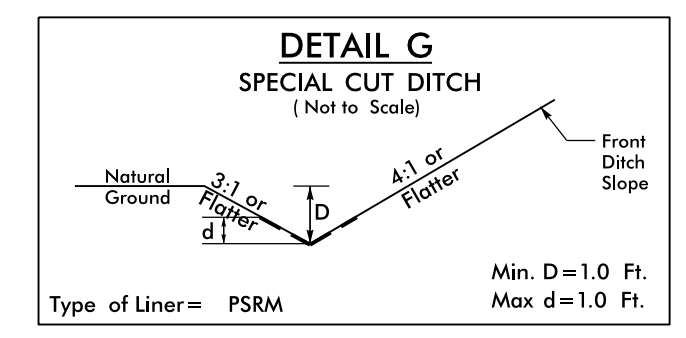
FROM STA. 65+25 TO STA. 65+50 -L- RT



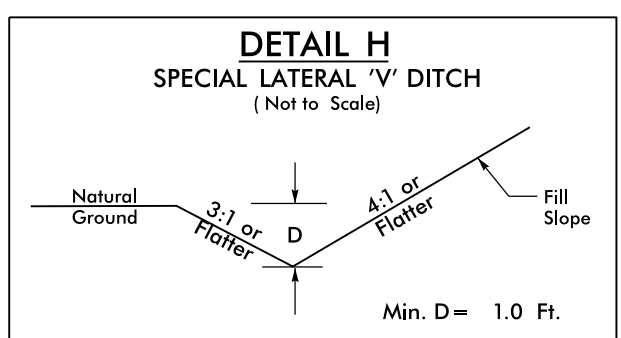
FROM STA. 55+25 TO STA. 58+60 -L- LT
FROM STA. 54+10 TO STA. 56+75 -L- RT



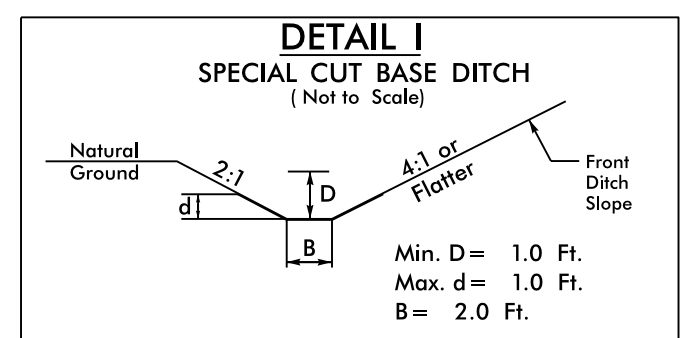
FROM STA. 61+25 TO STA. 62+50 -L- RT



FROM STA. 58+60 TO STA. 59+00 -L- LT
FROM STA. 58+00 TO STA. 61+25 -L- RT



FROM STA. 62+50 TO STA. 65+25 -L- RT



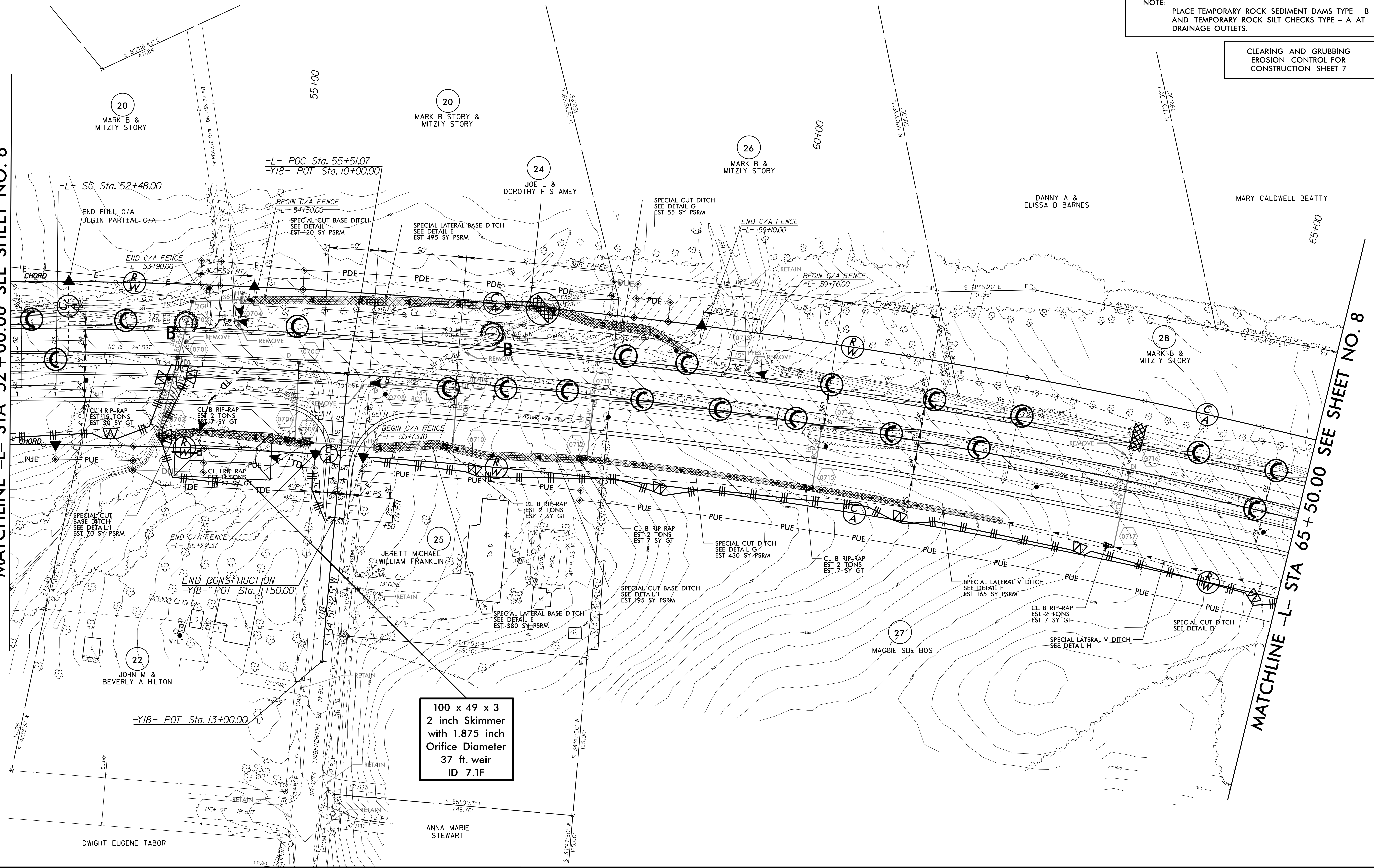
FROM STA. 54+37 TO STA. 55+25 -L- LT
FROM STA. 53+60 TO STA. 54+10 -L- RT
FROM STA. 56+75 TO STA. 58+00 -L- RT

NOTE: PLACE TEMPORARY ROCK SEDIMENT DAMS TYPE - B AND TEMPORARY ROCK SILT CHECKS TYPE - A AT DRAINAGE OUTLETS.

CLEARING AND GRUBBING EROSION CONTROL FOR CONSTRUCTION SHEET 7

MATCHLINE -L- STA 52+00.00 SEE SHEET NO. 6

MATCHLINE -L- STA 65+50.00 SEE SHEET NO. 8



100 x 49 x 3
2 inch Skimmer
with 1.875 inch
Orifice Diameter
37 ft. weir
ID 7.1F

8/17/99

10 OCT 2016 11:05
R:\V\1-2016 11:05
mms\107\B3100A_EC.psh07.dgn
R:\V\1-2016 11:05
mms\107\B3100A_EC.psh07.dgn