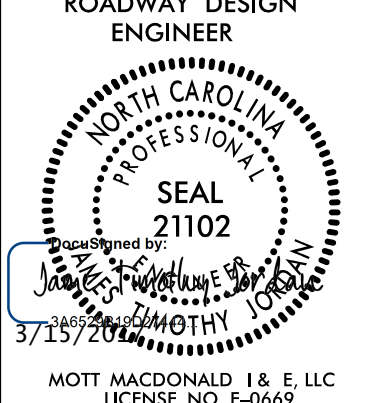





5/14/99

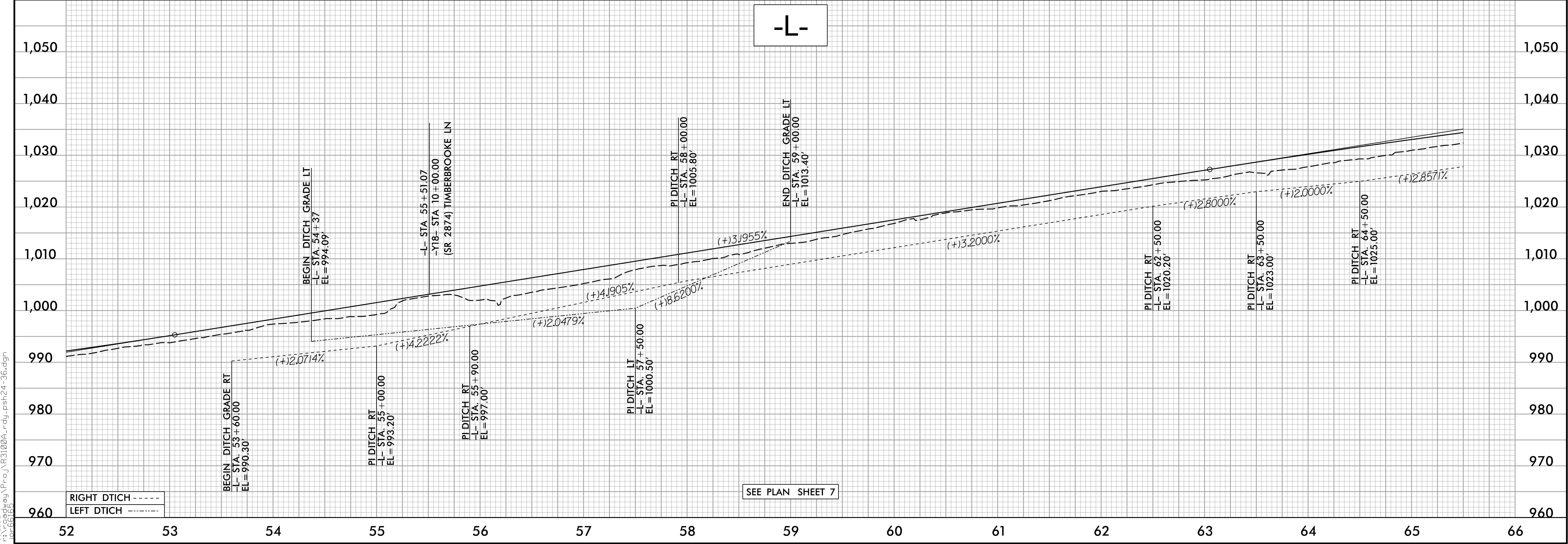
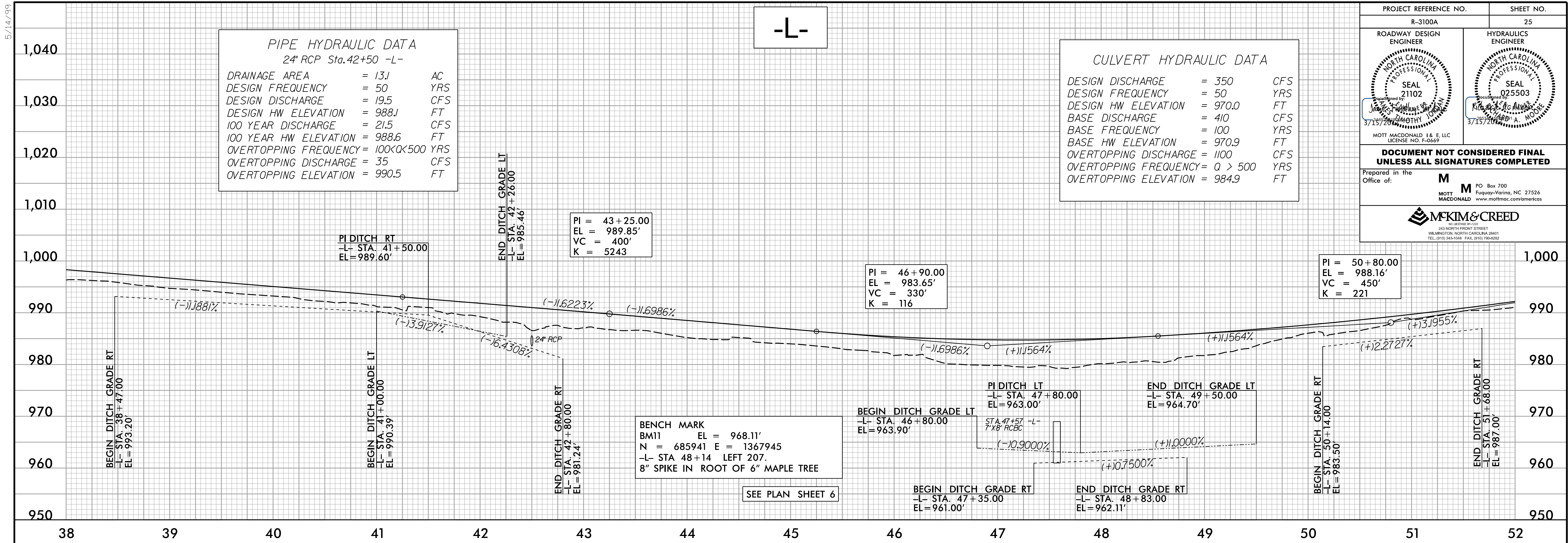
PROJECT REFERENCE NO. R-3100A		SHEET NO. 25	
ROADWAY DESIGN ENGINEER		HYDRAULICS ENGINEER	
			
DOCUMENT NOT CONSIDERED FINAL UNLESS ALL SIGNATURES COMPLETED			
Prepared in the Office of:			
		<small>MOTT MACDONALD &amp; E. LLC Fayetteville, NC 27526 www.mottmac.com/america</small>	
			

**PIPE HYDRAULIC DATA**  
24" RCP Sta. 42+50 -L-

DRAINAGE AREA	= 13J	AC
DESIGN FREQUENCY	= 50	YRS
DESIGN DISCHARGE	= 19.5	CFS
DESIGN HW ELEVATION	= 988.1	FT
100 YEAR DISCHARGE	= 21.5	CFS
100 YEAR HW ELEVATION	= 988.6	FT
OVERTOPPING FREQUENCY	= 100<Q<500	YRS
OVERTOPPING DISCHARGE	= 35	CFS
OVERTOPPING ELEVATION	= 990.5	FT

**CULVERT HYDRAULIC DATA**

DESIGN DISCHARGE	= 350	CFS
DESIGN FREQUENCY	= 50	YRS
DESIGN HW ELEVATION	= 970.0	FT
BASE DISCHARGE	= 410	CFS
BASE FREQUENCY	= 100	YRS
BASE HW ELEVATION	= 970.9	FT
OVERTOPPING DISCHARGE	= 1100	CFS
OVERTOPPING FREQUENCY	= Q > 500	YRS
OVERTOPPING ELEVATION	= 984.9	FT



6/19/05 PM 6:19:05 PM P:\proj\1000A\_rdu\_psh24-36.dgn