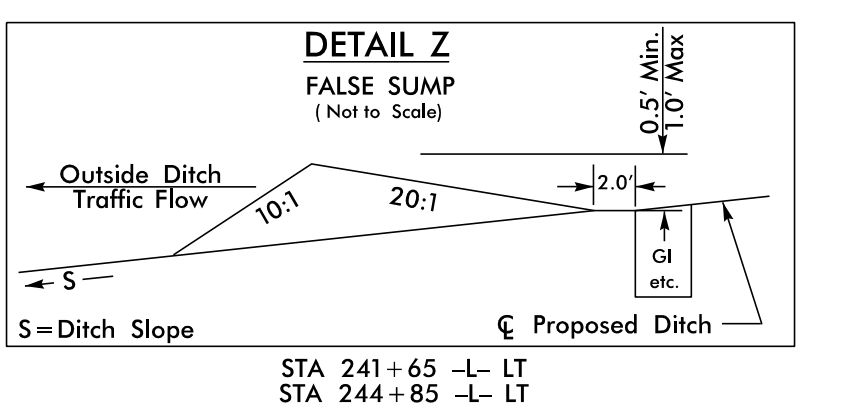
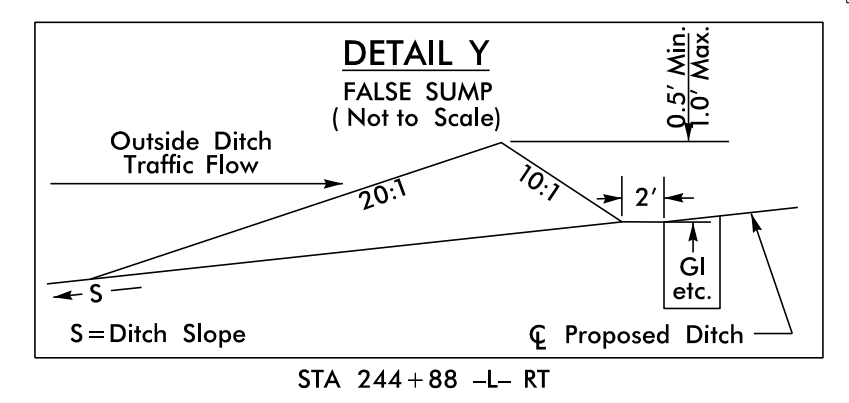
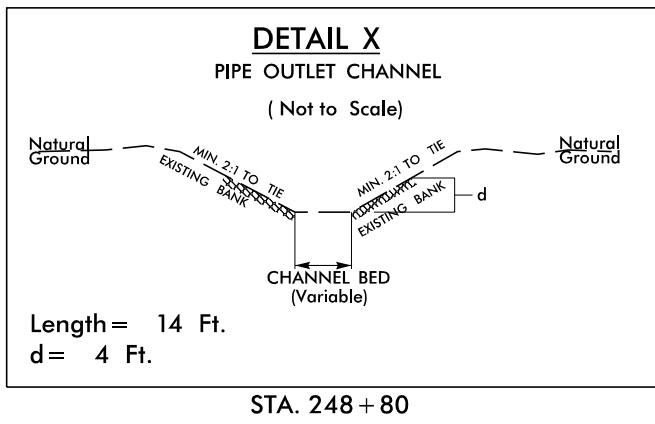
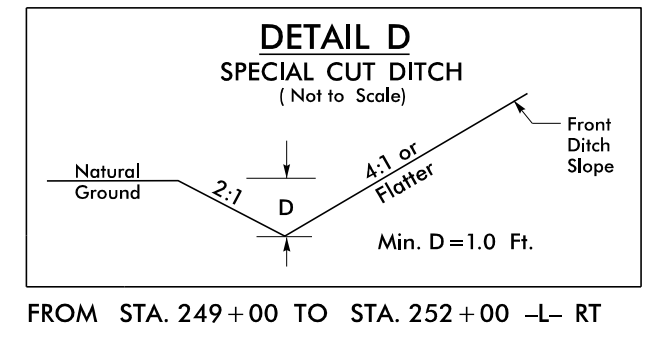


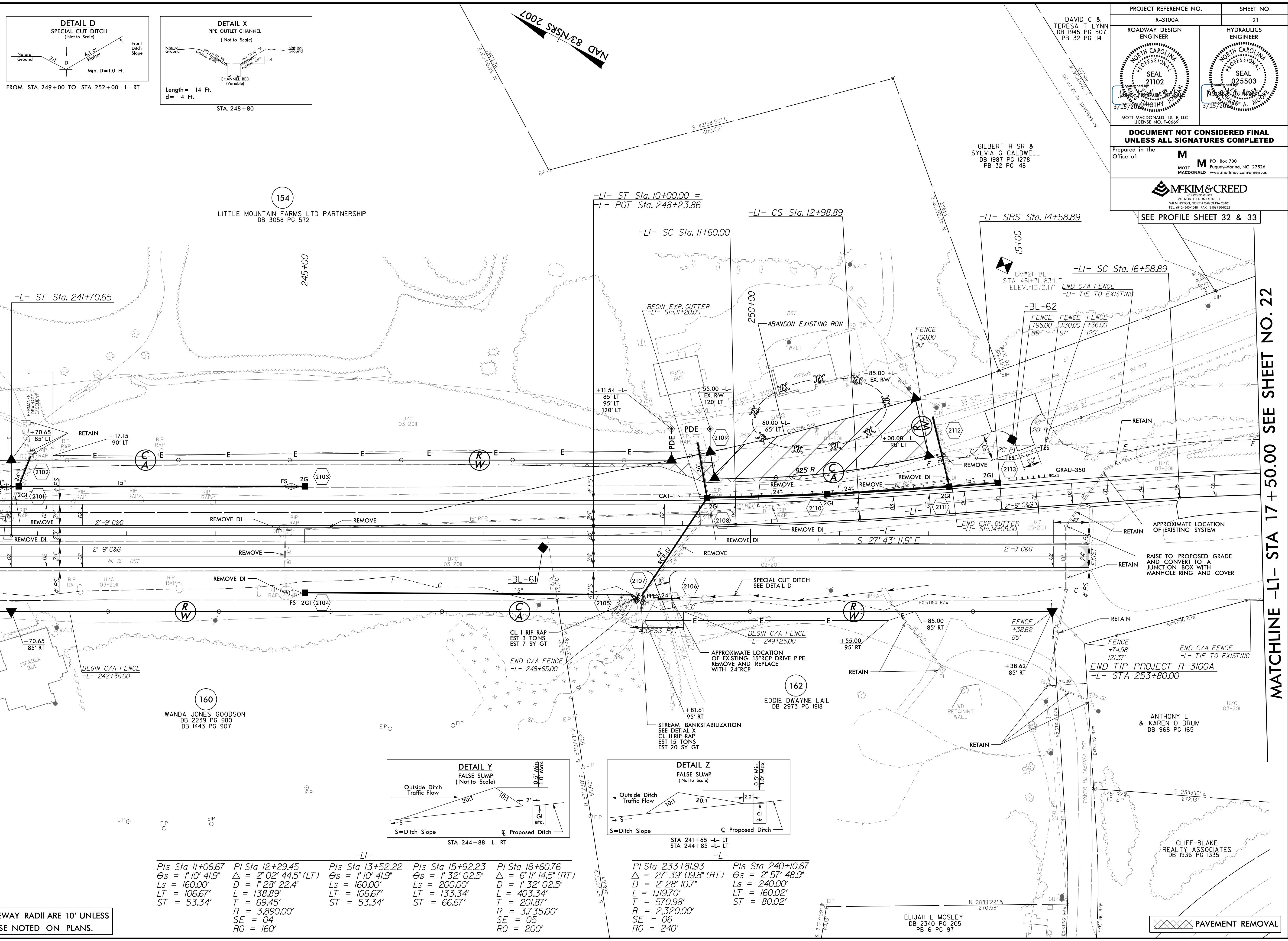
8.17.799



PROJECT REFERENCE NO. R-3100A		SHEET NO. 21	
ROADWAY DESIGN ENGINEER DAVID C & TERESA T LYNN DB 1945 PG 507 PB 32 PG 114		HYDRAULICS ENGINEER MOTT MACDONALD DB 1987 PG 1278 PB 32 PG 148	
DOCUMENT NOT CONSIDERED FINAL UNLESS ALL SIGNATURES COMPLETED			
Prepared in the Office of: 			

MATCHLINE -L- STA 241 + 50.00 SEE SHEET NO. 20

MATCHLINE -LI- STA 17 + 50.00 SEE SHEET NO. 22



-LI-	
Pls Sta 11+06.67 θs = 1° 10' 41.9" Ls = 160.00' LT = 106.67' ST = 53.34'	Pls Sta 12+29.45 Δ = 2° 02' 44.5" (LT) D = 1' 28' 22.4" L = 138.89' T = 69.45' R = 3,890.00' SE = 04 RO = 160'
Pls Sta 13+52.22 θs = 1° 10' 41.9" Ls = 160.00' LT = 106.67' ST = 53.34'	Pls Sta 15+92.23 θs = 1° 32' 02.5" Ls = 200.00' LT = 133.34' ST = 66.67'
Pls Sta 18+60.76 Δ = 6° 11' 14.5" (RT) D = 1' 32' 02.5" L = 403.34' T = 201.87' R = 3,735.00' SE = 05 RO = 200'	Pls Sta 233+81.93 Δ = 27° 39' 09.8" (RT) D = 2' 28' 10.7" L = 1,119.70' T = 570.98' R = 2,320.00' SE = 06 RO = 240'
Pls Sta 240+10.67 θs = 2° 57' 48.9" Ls = 240.00' LT = 160.02' ST = 80.02'	

ALL DRIVEWAY RADII ARE 10' UNLESS OTHERWISE NOTED ON PLANS.

PAVEMENT REMOVAL

8.17.799