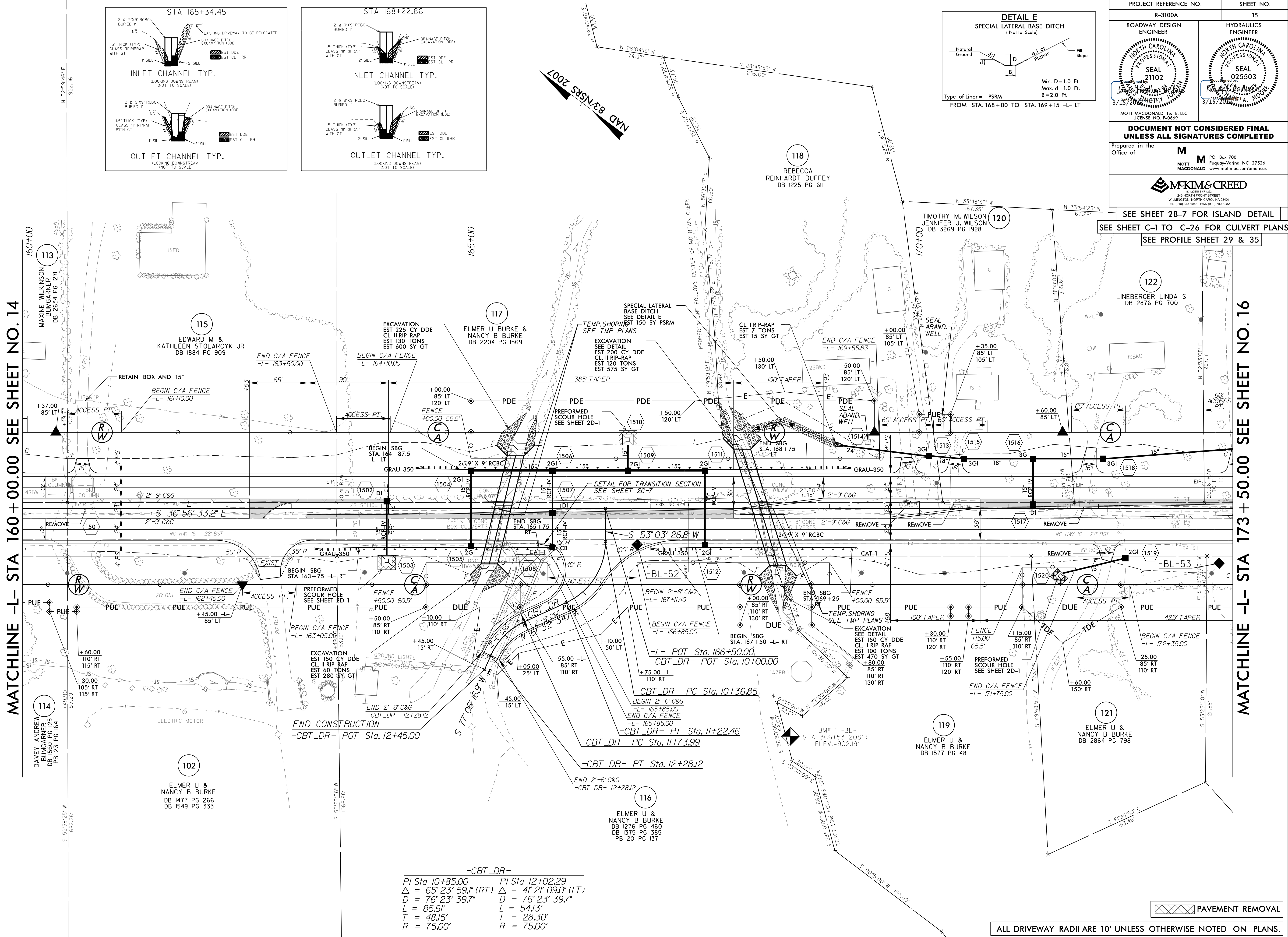
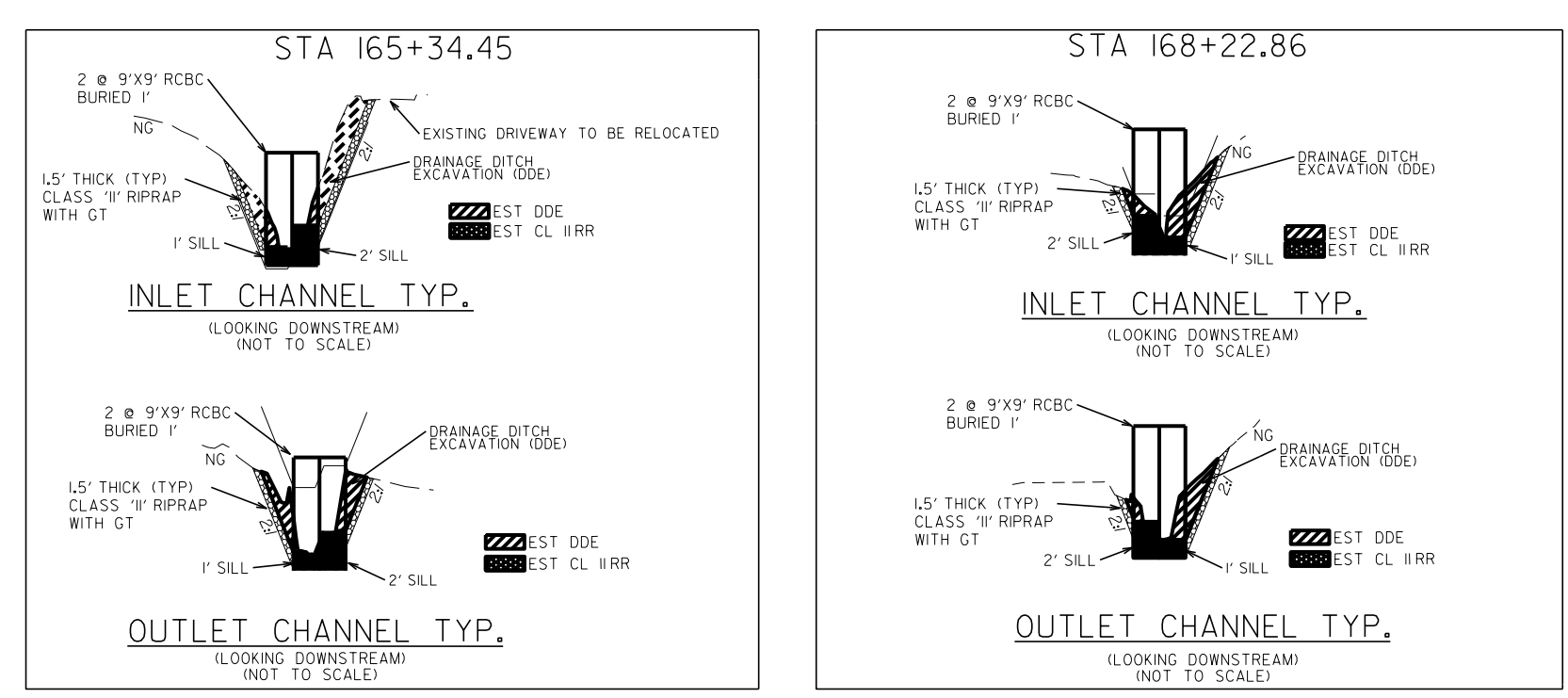
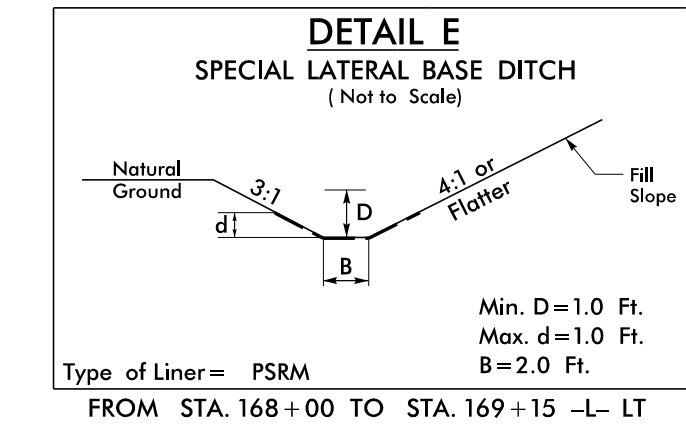


8/17/99

| | |
|---|---|
| PROJECT REFERENCE NO. R-3100A | SHEET NO. 15 |
| ROADWAY DESIGN ENGINEER MOTT MACDONALD SEAL 21102 3/15/2010 | HYDRAULICS ENGINEER MOTT MACDONALD SEAL Q25503 3/15/2010 |
| DOCUMENT NOT CONSIDERED FINAL UNLESS ALL SIGNATURES COMPLETED | |
| Prepared in the Office of: M MOTT MACDONALD PO Box 700 Fuquay-Varina, NC 27526 www.mottmac.com/americas | |
| MCKIM & CREED INCORPORATED 243 NORTH FRONT STREET WILMINGTON, NORTH CAROLINA 28401 TEL: (910) 343-1048 FAX: (910) 796-8282 | |



SEE SHEET 2B-7 FOR ISLAND DETAIL
SEE SHEET C-1 TO C-26 FOR CULVERT PLANS
SEE PROFILE SHEET 29 & 35

-CBT_DR-

| | |
|--------------------------------|--------------------------------|
| PI Sta 10+85.00 | PI Sta 12+02.29 |
| $\Delta = 65' 23' 59.1''$ (RT) | $\Delta = 41' 21' 09.0''$ (LT) |
| $D = 76' 23' 39.7''$ | $D = 76' 23' 39.7''$ |
| $L = 85.61'$ | $L = 54.13'$ |
| $T = 48.15'$ | $T = 28.30'$ |
| $R = 75.00'$ | $R = 75.00'$ |



ALL DRIVEWAY RADII ARE 10' UNLESS OTHERWISE NOTED ON PLANS.

8/17/99
 4:45 PM
 H:\Projects\04\Proje\N3100A_rdu.psh\F5.dgn
 10/6/05