

**This electronic collection of documents is provided
for the convenience of the user
and is Not a Certified Document –**

**The documents contained herein were originally issued
and sealed by the individuals whose names and license
numbers appear on each page, on the dates appearing
with their signature on that page.**

**This file or an individual page
shall not be considered a certified document.**

ROADWAY STANDARD DRAWINGS

THE FOLLOWING ROADWAY STANDARDS AS SHOWN IN "ROADWAY STANDARD DRAWINGS" - PROJECT SERVICES UNIT - N.C. DEPARTMENT OF TRANSPORTATION - RALEIGH, N.C., DATED JANUARY 2012 ARE APPLICABLE TO THIS PROJECT AND BY REFERENCE HEREBY ARE CONSIDERED A PART OF THESE PLANS:

STD. NO.	TITLE
1101.01	WORK ZONE ADVANCE WARNING SIGNS
1101.02	TEMPORARY LANE CLOSURES
1101.03	TEMPORARY ROAD CLOSURES
1101.04	TEMPORARY SHOULDER CLOSURES
1101.05	WORK ZONE VEHICLE ACCESSES
1101.11	TRAFFIC CONTROL DESIGN TABLES
1110.01	STATIONARY WORK ZONE SIGNS
1110.02	PORTABLE WORK ZONE SIGNS
1115.01	FLASHING ARROW BOARDS
1130.01	DRUM
1135.01	CONES
1145.01	BARRICADES
1150.01	FLAGGING DEVICES
1165.01	WORK VEHICLE LIGHTING SYSTEMS AND TMA DELINEATION
1180.01	SKINNY-DRUM
1205.01	PAVEMENT MARKINGS - LINE TYPES AND OFFSETS
1205.02	PAVEMENT MARKINGS - TWO-LANE AND MULTI-LANE ROADWAYS
1205.03	PAVEMENT MARKINGS - EXIT AND ENTRANCE RAMP
1205.12	PAVEMENT MARKINGS - BRIDGES
1250.01	RAISED PAVEMENT MARKERS - INSTALLATION SPACING
1251.01	RAISED PAVEMENT MARKERS - PERMANENT AND TEMPORARY
1253.01	RAISED PAVEMENT MARKERS - SNOWPLOWABLE

LEGEND

GENERAL

- DIRECTION OF TRAFFIC FLOW
- DIRECTION OF PEDESTRIAN TRAFFIC FLOW
- EXIST. PVMT.
- NORTH ARROW
- PROPOSED PVMT.
- TEMP. SHORING (LOCATION PURPOSES ONLY)

- WORK AREA
- REMOVAL

SIGNALS

- EXISTING
- PROPOSED
- TEMPORARY

PAVEMENT MARKINGS

- EXISTING LINES
- TEMPORARY LINES

PAVEMENT MARKING SYMBOLS

- PAVEMENT MARKING SYMBOLS

TEMPORARY PAVEMENT MARKING

SYMBOL	DESCRIPTION
	<u>PAVEMENT MARKING LINES</u>
	<u>4" WHITE PAINT</u>
PA	WHITE EDGELINE
PB	YELLOW EDGELINE
PC	10FT WHITE SKIP
PD	3 FT/ 9 FT WHITE MINISKIP
PI	YELLOW DOUBLE CENTER LINE
	<u>8" WHITE PAINT</u>
PN	GORELINE
	<u>4" COLD APPLIED PLASTIC</u>
CA	WHITE EDGELINE
CB	YELLOW EDGE LINE

NOTE: FOR EACH PAINT PAVEMENT MARKING ITEM, REFER TO GENERAL NOTES FOR NUMBER OF APPLICATIONS.

PAVEMENT MARKERS

TEMPORARY RAISED

- MI CRYSTAL & RED
- MH YELLOW & YELLOW

TRAFFIC CONTROL DEVICES

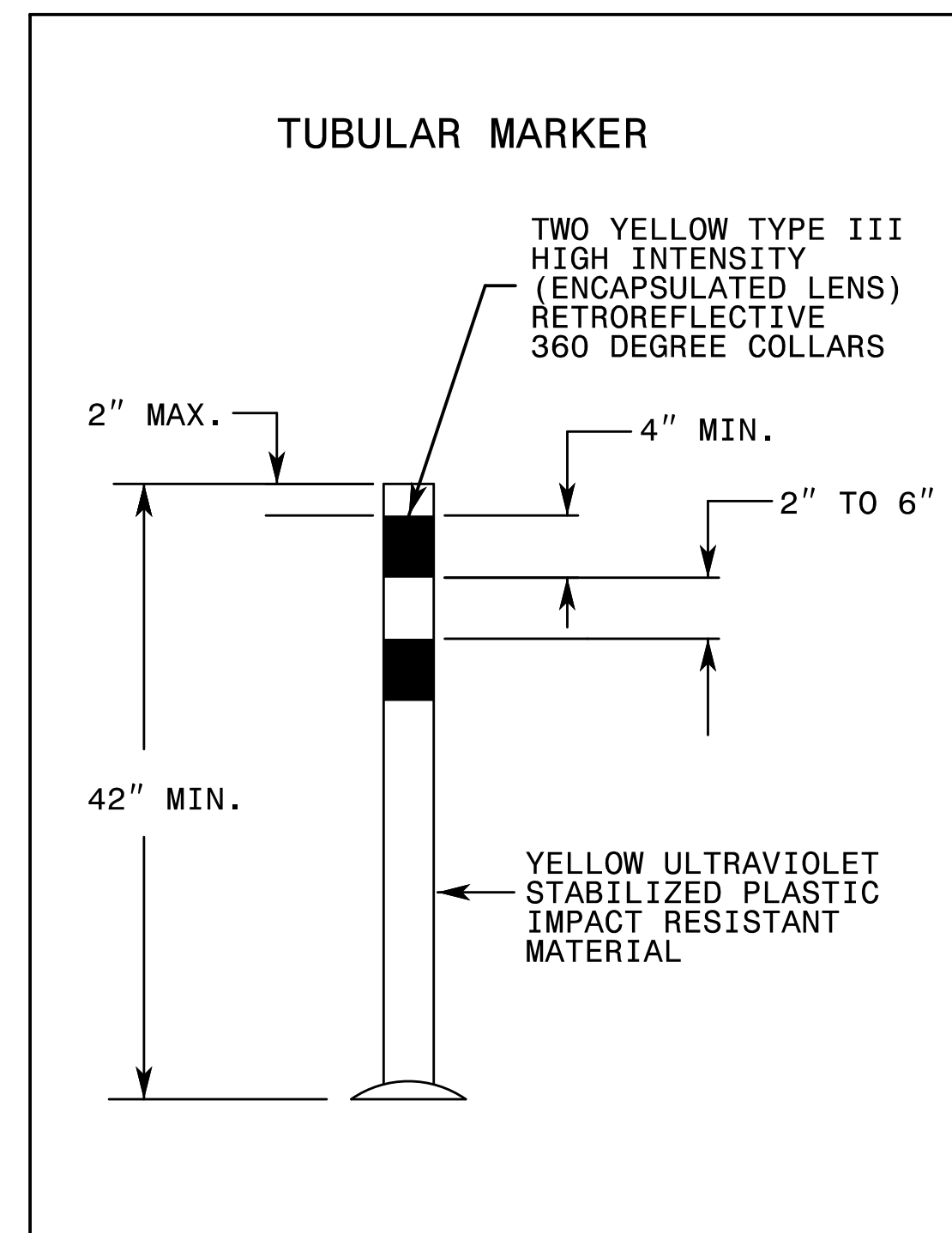
- BARRICADE (TYPE III)
- CONE
- DRUM SKINNY DRUM TUBULAR MARKER
- TEMPORARY CRASH CUSHION
- FLASHING ARROW BOARD
- FLAGGER
- LAW ENFORCEMENT
- TRUCK MOUNTED ATTENUATOR (TMA)
- CHANGEABLE MESSAGE SIGN

TEMPORARY SIGNING

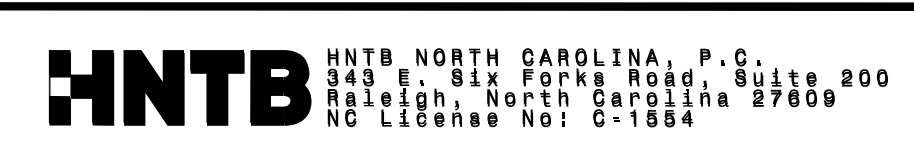
- PORTABLE SIGN
- STATIONARY SIGN
- STATIONARY OR PORTABLE SIGN

PAVEMENT MARKERS

- CRYSTAL/CRYSTAL
- CRYSTAL/RED
- YELLOW/YELLOW



3:59:09 PM
\\TCP\B-5938.fc.TMP-1A.dgn
HNTB



APPROVED: Rhonda B. Early
DATE: 1/18/2017
SEAL



TRANSPORTATION
MANAGEMENT PLAN

**ROADWAY STANDARD
DRAWINGS, LEGEND &
TEMPORARY PAVEMENT
MARKING SCHEDULE**

**DOCUMENT NOT CONSIDERED FINAL
UNLESS ALL SIGNATURES COMPLETED**

GENERAL NOTES

TRAFFIC PATTERN ALTERATIONS

- G) NOTIFY THE ENGINEER TWENTY ONE (21) CALENDAR DAYS PRIOR TO ANY TRAFFIC PATTERN ALTERATION.
- H) NOTIFY THE OVERSIZE/OVERWEIGHT PERMIT GROUP FOURTEEN (14) CALENDAR DAYS PRIOR TO ANY TRAFFIC PATTERN ALTERATION.

SIGNING

- I) INSTALL ADVANCE WORK ZONE WARNING SIGNS WHEN WORK IS WITHIN 40 FT FROM THE EDGE OF TRAVEL LANE AND NO MORE THAN THREE (3) DAYS PRIOR TO THE BEGINNING OF CONSTRUCTION.
- J) PROVIDE SIGNING AND DEVICES REQUIRED TO CLOSE THE ROAD ACCORDING TO THE ROADWAY STANDARD DRAWINGS AND TRAFFIC CONTROL PLANS.
- K) COVER OR REMOVE ALL SIGNS AND DEVICES REQUIRED TO CLOSE THE ROAD WHEN ROAD CLOSURE IS NOT IN OPERATION.
- L) ENSURE ALL NECESSARY SIGNING IS IN PLACE PRIOR TO ALTERING ANY TRAFFIC PATTERN.

TRAFFIC CONTROL DEVICES

- M) WHEN LANE CLOSURES ARE NOT IN EFFECT SPACE CHANNELIZING DEVICES IN WORK AREAS NO GREATER IN FEET THAN TWICE THE POSTED SPEED LIMIT (MPH) EXCEPT, 10 FT ON-CENTER IN RADII, AND 3 FT OFF THE EDGE OF AN OPEN TRAVELWAY. REFER TO STANDARD SPECIFICATIONS FOR ROADS AND STRUCTURES SECTIONS 1130 (DRUMS), 1135 (CONES) AND 1180 (SKINNY DRUMS) FOR ADDITIONAL REQUIREMENTS.
- N) PLACE TYPE III BARRICADES, WITH "ROAD CLOSED" SIGN R11-2 ATTACHED, OF SUFFICIENT LENGTH TO CLOSE ENTIRE ROADWAY.
- O) PLACE ADDITIONAL SETS OF THREE CHANNELIZING DEVICES, DRUMS, PERPENDICULAR TO THE EDGE OF TRAVELWAY ON 500FT CENTERS WHEN UNOPENED LANES ARE CLOSED TO TRAFFIC.

PAVEMENT MARKINGS AND MARKERS

- P) INSTALL TEMPORARY PAVEMENT MARKINGS AND TEMPORARY PAVEMENT MARKERS AS FOLLOWS:

ROAD NAME	MARKING	MARKER
1. ALL CONCRETE SURFACES	PAINT	TEMPORARY RAISED/TUBULAR MARKERS
2. ALL ASPHALT SURFACES	COLD APPLIED PLASTIC (TYPE IV)	TEMPORARY RAISED

- Q) PLACE ONE APPLICATION OF PAINT FOR TEMPORARY TRAFFIC PATTERNS, WHEN APPLICABLE AND AS DIRECTED BY THE ENGINEER.
- R) INSTALL FINAL PAVEMENT MARKINGS AND PAVEMENT MARKERS ON THE FINAL SURFACE AS FOLLOWS:

ROAD NAME	MARKING	MARKER
1. ALL CONCRETE SURFACES	POLYUREA (WITH HIGHLY REFLECTIVE ELEMENTS)	TEMPORARY RAISED/TUBULAR MARKERS
2. ALL ASPHALT SURFACES	THERMOPLASTIC	SNOWPLOWABLE

- S) USE THERMOPLASTIC MARKINGS FOR SYMBOLS AND DIAGONALS.
 - T) TIE PROPOSED PAVEMENT MARKING LINES TO EXISTING PAVEMENT MARKING LINES.
 - U) REMOVE/REPLACE ANY CONFLICTING/DAMAGED PAVEMENT MARKINGS AND MARKERS BY THE END OF EACH DAY'S OPERATION.
 - V) REMOVE ALL RESIDUE AND SURFACE LAITANCE BY ACCEPTABLE METHODS ON CONCRETE BRIDGE DECKS PRIOR TO PLACING POLYUREA PAVEMENT MARKING MATERIAL.
 - W) REMOVAL OF TEMPORARY PAINT PAVEMENT MARKINGS SHALL BE ACCOMPLISHED BY USING WATER BLASTING AS APPROVED BY THE ENGINEER TO MINIMIZE DAMAGE TO THE ROAD SURFACE. BLASTING SHALL BE REQUIRED TO REMOVE 100% OF THE PAVEMENT MARKING WITHOUT REMOVING MORE THAN 1/32 INCH OF THE PAVEMENT SURFACE.
- MISCELLANEOUS
- X) MAY USE LAW ENFORCEMENT TO DIRECT TRAFFIC AND ENFORCE ROAD CLOSURES LOCATIONS SHOWN IN THE PLANS ARE APPROXIMATE AND MAY BE REVISED AS THE OFFICER OR THE ENGINEER DEEM NECESSARY.
 - Y) ENSURE THE OVERSIZE/OVERWEIGHT PERMIT UNIT (919) 733-4740 HAS BEEN ADVISED OF THE ONGOING TRAFFIC OPERATIONS THROUGH THE DIVISION OFFICE. SEE ALSO GENERAL NOTE "H".
 - Z) COORDINATE WITH NEARBY PROJECT B-5939.

LOCAL NOTES

- LN-1 FINAL PAVEMENT MARKING MATERIAL SHALL BE POLYUREA WITH RAISED PAVEMENT MARKERS ON ALL CONCRETE SURFACES AND THERMOPLASTIC WITH SNOWPLOWABLE PAVEMENT MARKERS ON ALL ASPHALT SURFACES.
- LN-2 COORDINATE WITH LOCAL FIRE AND EMS DEPARTMENTS ON PROTOCOL FOR ALLOWING EMERGENCY VEHICLES TO CROSS DURING ROAD CLOSURE/ REPOSITIONING OPERATIONS.
- LN-3 DOCUMENT/SURVEY THE LOCATION OF ALL EXISTING MARKINGS WITHIN THE LIMITS OF THE PROJECT TO ENSURE PROPER PLACEMENT OF FINAL MARKINGS IN ORIGINAL PATTERN.

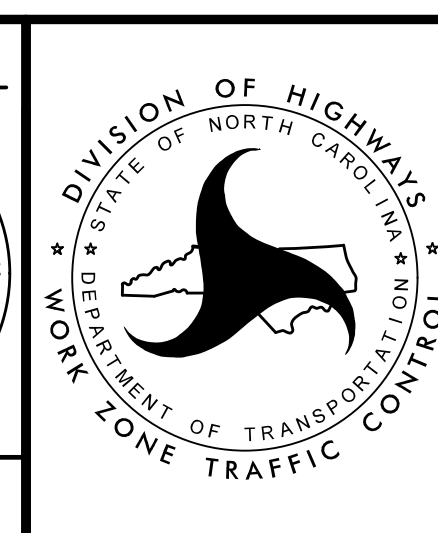
3:59:21PM
\\TC\B-5938.tc-TMP-1C.dgn
HNTB

HNTB HNTB NORTH CAROLINA, P.C.
343 E. Six Forks Road, Suite 200
Raleigh, North Carolina 27609
NC License No: C-1554

APPROVED: *Rhonda B. Early*
DATE: 1/18/2017

SEAL

DOCUMENT NOT CONSIDERED FINAL
UNLESS ALL SIGNATURES COMPLETED



TRANSPORTATION
MANAGEMENT PLAN

TRANSPORTATION
OPERATIONS PLAN
(GENERAL NOTES
AND LOCAL NOTES)

PHASING

NOTES:

MAINTAIN VEHICULAR ACCESS TO ALL RESIDENCES AND BUSINESSES DURING THE LIFE OF THE CONTRACT UNLESS OTHERWISE NOTED IN THE PHASING OR DIRECTED BY THE ENGINEER.

COMPLETE ANY PROPOSED MILLING & PAVING IN SUCH A MANNER THAT PONDING OF WATER WILL NOT OCCUR IN THE TRAVEL LANE.

THE TERM RSD DENOTES "ROADWAY STANDARD DRAWING".

PRIOR TO BEGINNING ANY WORK, INSTALL ADVANCE WARNING SIGNS ON SR 1182 (ATLANTIC BEACH CAUSEWAY), ARENDELL ST, S. 23RD ST & N. 24TH ST ACCORDING TO RSD 1101.01.

PHASE I

*** REFER TO SHEET TMP-3 THRU TMP-7 ***

NOTE: INSTALL CHANGEABLE MESSAGE SIGNS FOR PUBLIC INFORMATION 2 WEEKS PRIOR TO THE START OF ANY BRIDGE WORK REQUIRING LANE OR ROAD CLOSURES. (LN-3)

NOTE: ALL CHANGEABLE MESSAGE SIGN LOCATIONS SHALL BE PLACED AS DIRECTED BY THE ENGINEER.

STEP 1: USING RSD 1101.02 (3 OF 15), CLOSE OUTSIDE LANES IN BOTH DIRECTIONS ON SR 1182 (ATLANTIC BEACH CAUSEWAY) AND PERFORM INSTALLATION OF SPAN BLOCKING.

STEP 2: COMPLETE THE WORK REQUIRED IN STEPS 2A THRU 2D

COMPLETE THE WORK OF PHASE 1, STEPS 2A-2D, USING NIGHT TIME ROAD CLOSURES MONDAY THRU THURSDAY BETWEEN THE HOURS OF 12:00 A.M. TO 4:00 A.M. FOR A MAXIMUM OF SIX (6) ROAD CLOSURE PERIODS TO COMPLETE JACKING (REPOSITIONING) OF THE BRIDGE SPANS.

2A: INSTALL ALL ROAD CLOSURE SIGNS AND DEVICES AND REVISE ALL CHANGEABLE MESSAGE SIGN MESSAGES.

2B: USING RSD 1101.03 (1 OF 9), CLOSE SR 1182 (ATLANTIC BEACH CAUSEWAY) TO THRU TRAFFIC. (LN-2)

NOTE: IF NECESSARY, MAKE SURE LAW ENFORCEMENT IS IN PLACE PRIOR TO CLOSING SR 1182 (ATLANTIC BEACH CAUSEWAY).

2C: AWAY FROM TRAFFIC, PERFORM BRIDGE SPAN JACKING OPERATIONS. (LN-2)

2D: REMOVE ALL ROAD CLOSURE SIGNS AND DEVICES AND OPEN TRAFFIC TO THE EXISTING PATTERN.

REVISE ALL CHANGEABLE MESSAGE SIGN MESSAGES.

PHASE IA

***REFER TO SHEET TMP-8 THRU TMP-10 ***

STEP 1: COMPLETE WORK REQUIRED IN STEPS 1A & 1B. (LN-3)

1A: USING RSD 1101.02 (7 & 9 OF 15), REMOVE AND REPLACE TEMPORARY PAVEMENT MARKINGS. IN A CONTINUOUS MANNER CLOSE INSIDE LANES IN BOTH DIRECTIONS ON SR 1182, PLACE TEMPORARY PAVEMENT MARKINGS AND TEMPORARY PAVEMENT MARKERS AND SHIFT TRAFFIC TO OUTSIDE LANES IN A TWO-LANE, TWO-WAY PATTERN. (SEE TMP-8)

1B: CONDUCT BRIDGE REHABILITATION ON THE NORTHERN MOST BRIDGE SPAN FOR THE INSIDE LANES AND PORTION OF GORE AREA. PLACE TEMPORARY PAVEMENT MARKINGS AND TEMPORARY TUBULAR MARKERS AND OPEN NB LANES TO TEMPORARY TRAFFIC PATTERN. (SEE TMP-9)

STEP 2: COMPLETE WORK REQUIRED IN STEPS 2A & 2B.

2A: USING RSD 1101.02 (9 OF 15), CLOSE OUTSIDE LANE IN SB DIRECTION OF SR 1182 AND SHIFT TRAFFIC TO INSIDE LANE LANE. (SEE TMP-9)

PHASE IA (CONT.)

2B: AWAY FROM TRAFFIC, CONDUCT BRIDGE REHABILITATION ON THE NORTHERN MOST BRIDGE SPAN FOR THE SB DIRECTION. PLACE TEMPORARY PAVEMENT MARKINGS AND TEMPORARY TUBULAR MARKERS AND OPEN SB LANES TO TEMPORARY TRAFFIC PATTERN. (SEE TMP-9 & 10)

STEP 3: COMPLETE WORK REQUIRED IN STEPS 3A & 3B.

3A: USING RSD 1101.02 (3 OF 15), CLOSE OUTSIDE LANE IN NB DIRECTION OF SR 1182 AND SHIFT TRAFFIC TO INSIDE LANE. (SEE TMP-10)

3B: CONDUCT BRIDGE REHABILITATION ON THE NORTHERN MOST BRIDGE SPAN FOR THE NB DIRECTION. (SEE TMP-10)

PHASE II

*** REFER TO SHEET TMP-11 & TMP-12 FOR DETAILS ***

STEP 1: USING RSD 1101.02 (3 OF 15) & 1101.03 (6 OF 9), IN A CONTINUOUS MANNER, PLACE TEMPORARY PAVEMENT MARKINGS & TEMPORARY PAVEMENT MARKERS, SHIFT TRAFFIC TO THE SB SIDE OF SR 1182 IN A TWO-LANE, TWO-WAY PATTERN AND CLOSE THE NB LANES ON SR 1182.

STEP 2: AWAY FROM TRAFFIC, CONDUCT BRIDGE REHABILITATION ON NB SIDE OF SR 1182 AND PLACE TEMPORARY PAVEMENT MARKINGS AND TEMPORARY PAVEMENT MARKERS. (SEE SHEETS TMP-13 & TMP-14 FOR MARKING & MARKERS)

PHASE III

*** REFER TO SHEET TMP-13 & TMP-14 FOR DETAILS ***

STEP 1: USING RSD 1101.02 (3 OF 15) & 1101.03 (6 OF 9), IN A CONTINUOUS MANNER, COMPLETE TEMPORARY PAVEMENT MARKINGS, SHIFT TRAFFIC TO THE NB SIDE OF SR 1182 IN A TWO-LANE, TWO-WAY PATTERN AND CLOSE THE SB LANES.

STEP 2: AWAY FROM TRAFFIC, CONDUCT BRIDGE REHABILITATION ON SB SIDE OF SR 1182. PLACE TEMPORARY PAVEMENT MARKINGS AND TEMPORARY PAVEMENT MARKERS AND OPEN TO EXISTING PATTERN.

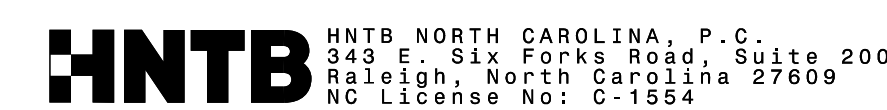
PHASE IV

STEP 1: USING RSD 1101.02 (3 OF 15), MILL AND RESURFACE ASPHALT APPROACHES TO LIMITS SHOWN AND PLACE FINAL PAVEMENT MARKINGS AND MARKERS. (SEE LN-1)

STEP 2: REMOVE ALL TEMPORARY TRAFFIC CONTROL DEVICES AND ADVANCE WARNING SIGNS.

OPEN ALL LANES TO TRAFFIC.

3:59:27 PM
 \\TCP\B-5938_tc-TMP-2.dgn
 HNTB

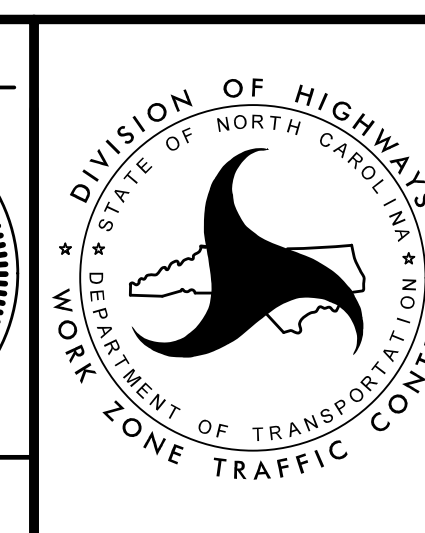


APPROVED: *Rhonda B. Early*
DocuSigned by: Rhonda B. Early F34CAFACBBF48A

DATE: 1/18/2017

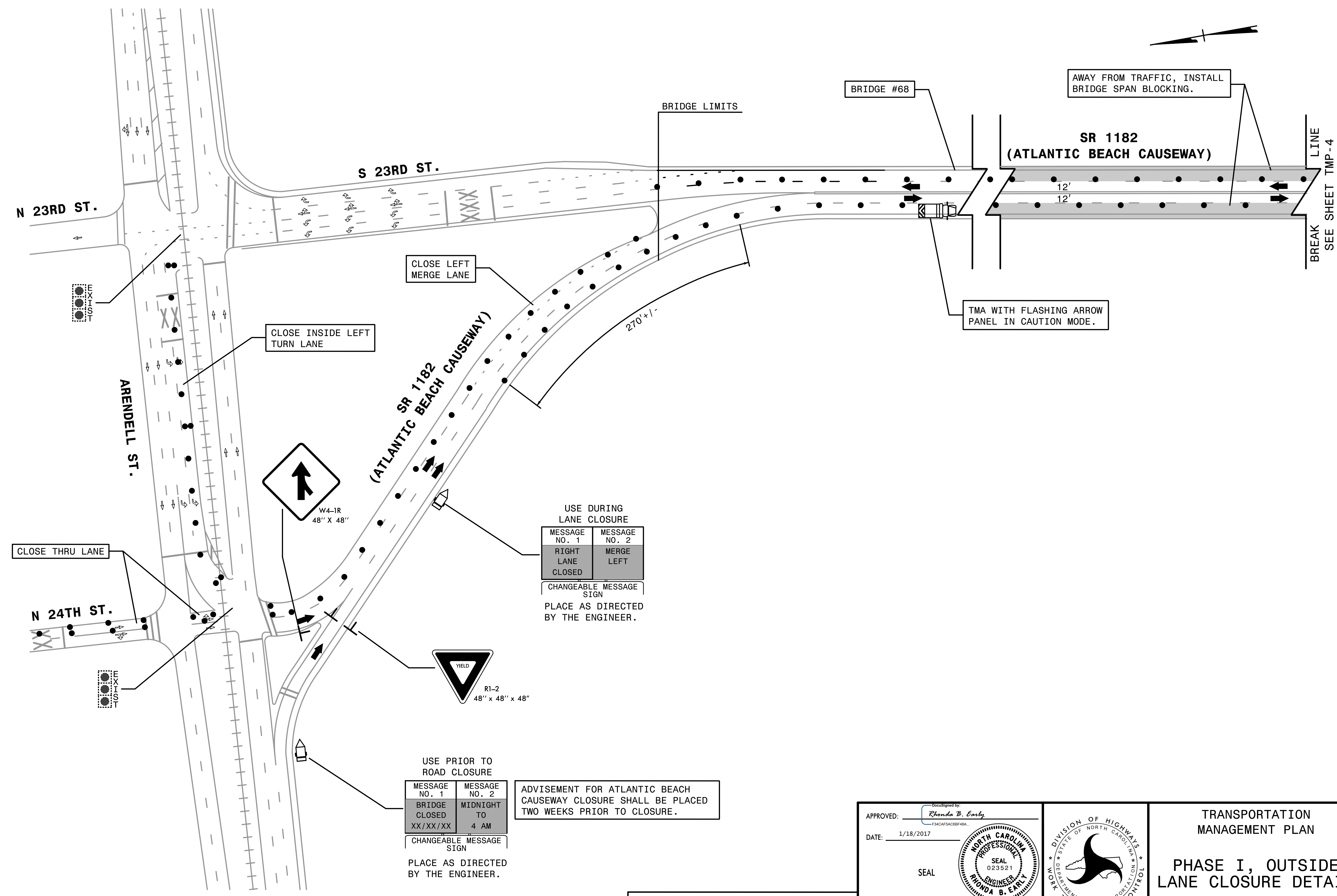
SEAL

DOCUMENT NOT CONSIDERED FINAL UNLESS ALL SIGNATURES COMPLETED



TRANSPORTATION
MANAGEMENT PLAN

**TEMPORARY
TRAFFIC CONTROL
PHASING**



3:59:34 PM
B-5938_tc_pidl_lane_closure.dgn
HNTB

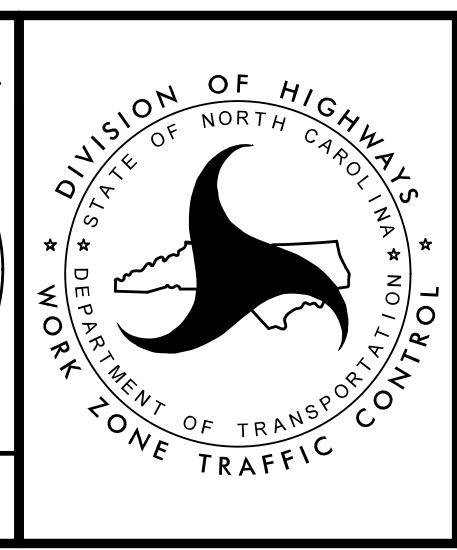
HNTB HNTB NORTH CAROLINA, P.C.
343 E. Six Forks Road, Suite 200
Raleigh, North Carolina 27609
NC License No: C-1554

APPROVED: *Rhonda B. Early*
DATE: 1/18/2017

SEAL

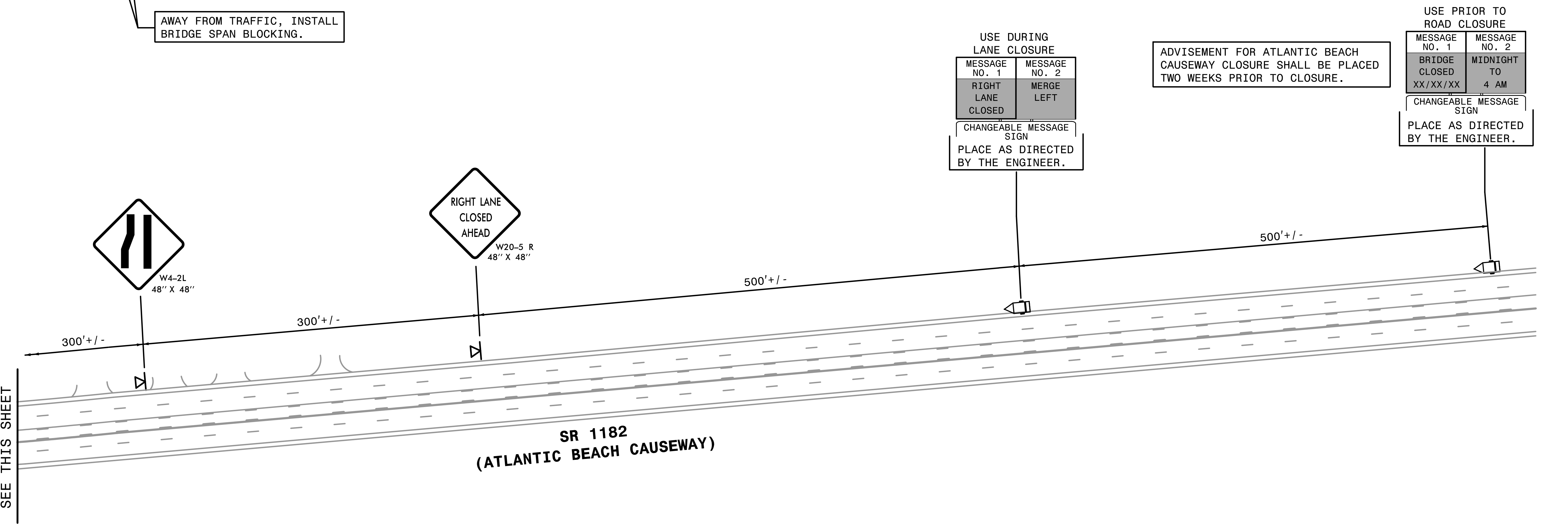
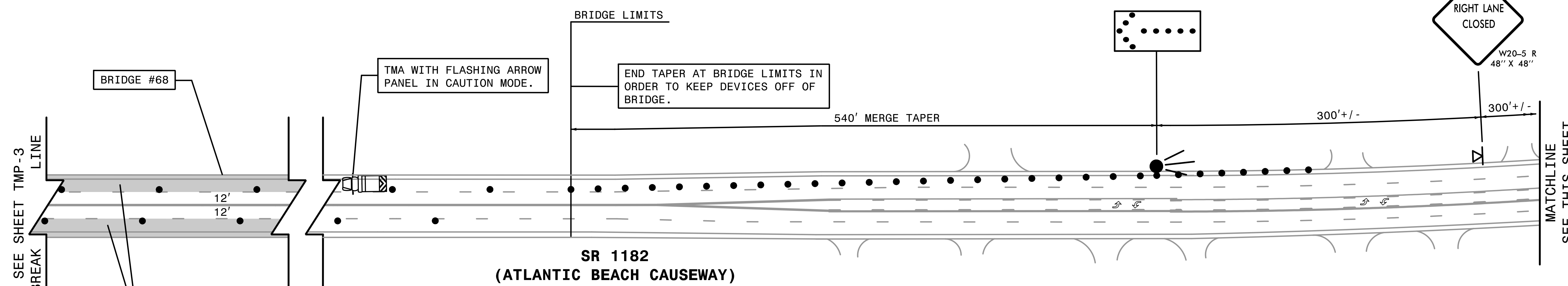
SEAL
NORTH CAROLINA
PROFESSIONAL
ENGINEER
RHONDA B. EARLY
023521

**DOCUMENT NOT CONSIDERED FINAL
UNLESS ALL SIGNATURES COMPLETED**



**TRANSPORTATION
MANAGEMENT PLAN**

**PHASE I, OUTSIDE
LANE CLOSURE DETAIL**



MATCHLINE SEE THIS SHEET

MATCHLINE SEE THIS SHEET

3:59:40 PM
\\B-5938_fc_pid2_lane_closure.dgn
HNTB



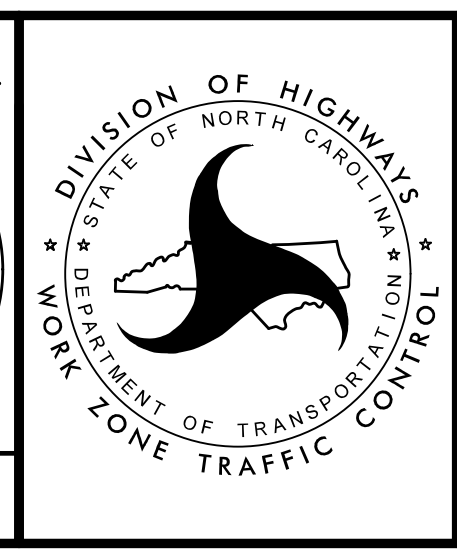
APPROVED: *Rhonda B. Early*

DATE: 1/18/2017

SEAL

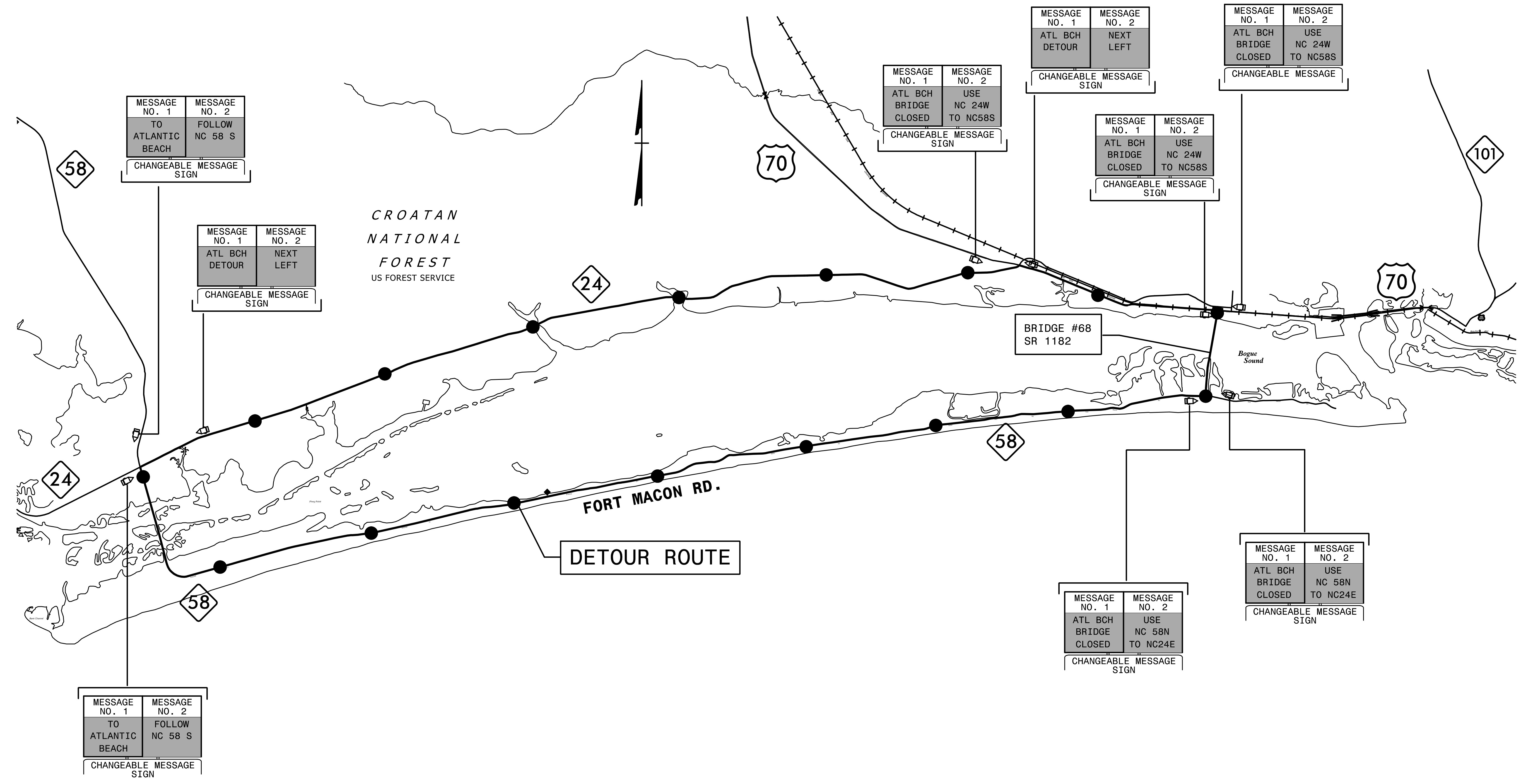
PROFESSIONAL ENGINEER
NORTH CAROLINA
SEAL
023521
RHONDA B. EARLY

DOCUMENT NOT CONSIDERED FINAL
UNLESS ALL SIGNATURES COMPLETED



TRANSPORTATION
MANAGEMENT PLAN

PHASE I, OUTSIDE
LANE CLOSURE DETAIL



NOTES:

- ALL CHANGEABLE MESSAGE SIGN (CMS) MESSAGES AND LOCATIONS TO BE APPROVED BY THE ENGINEER.
- UTILIZE CMS BOARDS NEAR ATLANTIC BEACH BRIDGE TO PROVIDE PUBLIC INFORMATION ADVISEMENT OF CLOSURE, TWO WEEKS PRIOR TO CLOSURE.
- SEE SHEET TMP-6 AND TMP-7 FOR BRIDGE CLOSURE DETAILS.

3:59:46 PM
N:\TCP\B-5938.tc.D\3_detour.dgn
HNTB



APPROVED: *Rhonda B. Early*
DATE: 1/18/2017

SEAL

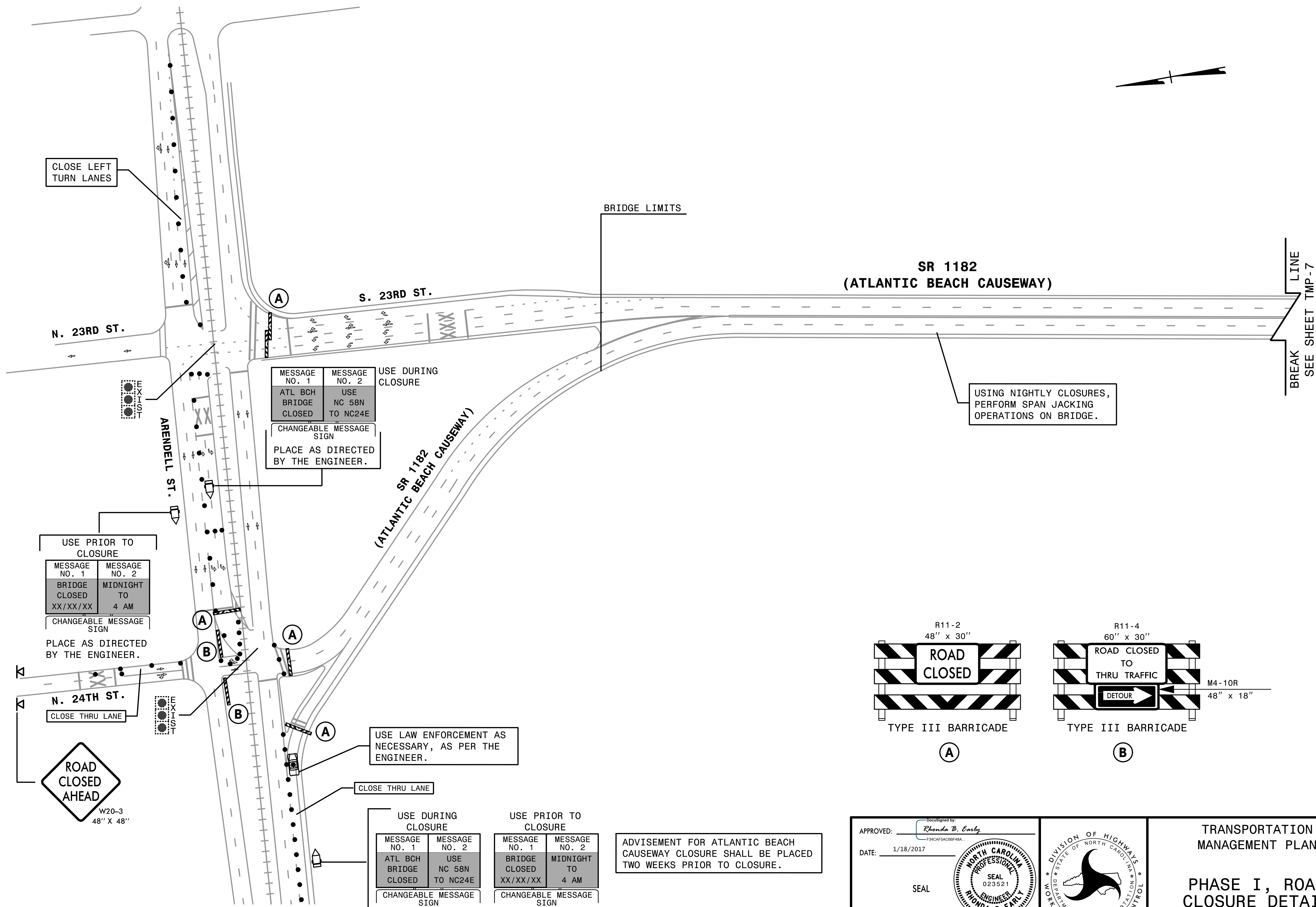
PROFESSIONAL ENGINEER
SEAL 023521
RHONDA B. EARLY

DOCUMENT NOT CONSIDERED FINAL UNLESS ALL SIGNATURES COMPLETED



TRANSPORTATION MANAGEMENT PLAN

OFF-SITE DETOUR FOR ROAD CLOSURE



CLOSE LEFT TURN LANES

N. 23RD ST.

S. 23RD ST.

SR 1182
(ATLANTIC BEACH CAUSEWAY)

LINE
BREAK
SEE SHEET TMP-7

MESSAGE NO. 1	MESSAGE NO. 2
ATL BCH BRIDGE CLOSED	USE NC 58N TO NC24E

USE DURING CLOSURE

CHANGEABLE MESSAGE SIGN
PLACE AS DIRECTED BY THE ENGINEER.

USING NIGHTLY CLOSURES, PERFORM SPAN JACKING OPERATIONS ON BRIDGE.

USE PRIOR TO CLOSURE

MESSAGE NO. 1	MESSAGE NO. 2
BRIDGE CLOSED TO XX/XX/XX	MIDNIGHT TO 4 AM

CHANGEABLE MESSAGE SIGN

PLACE AS DIRECTED BY THE ENGINEER.

N. 24TH ST.

CLOSE THRU LANE



SR 1182
(ATLANTIC BEACH CAUSEWAY)

BRIDGE LIMITS

USE LAW ENFORCEMENT AS NECESSARY, AS PER THE ENGINEER.

CLOSE THRU LANE

USE DURING CLOSURE

MESSAGE NO. 1	MESSAGE NO. 2
ATL BCH BRIDGE CLOSED	USE NC 58N TO NC24E

CHANGEABLE MESSAGE SIGN

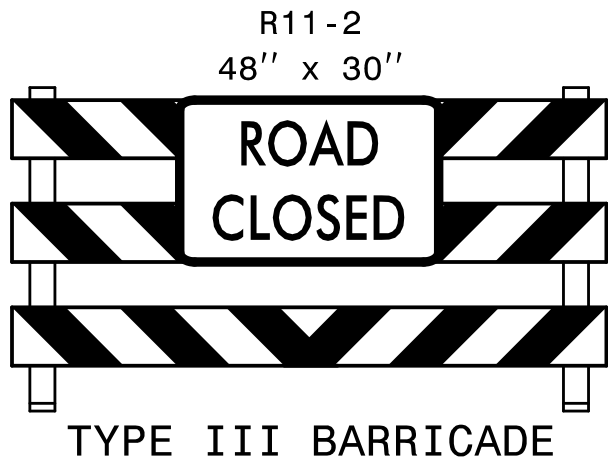
USE PRIOR TO CLOSURE

MESSAGE NO. 1	MESSAGE NO. 2
BRIDGE CLOSED TO XX/XX/XX	MIDNIGHT TO 4 AM

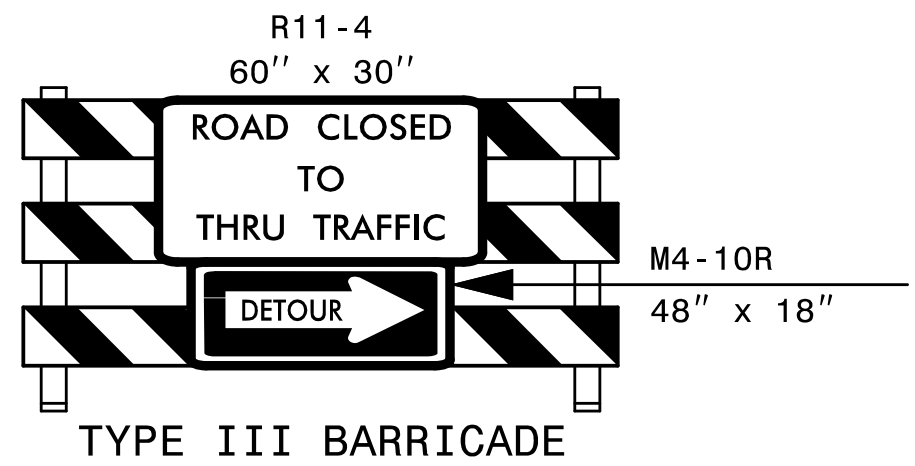
CHANGEABLE MESSAGE SIGN

PLACE AS DIRECTED BY THE ENGINEER.

ADVISEMENT FOR ATLANTIC BEACH CAUSEWAY CLOSURE SHALL BE PLACED TWO WEEKS PRIOR TO CLOSURE.



A



B

M4-10R
48\"/>

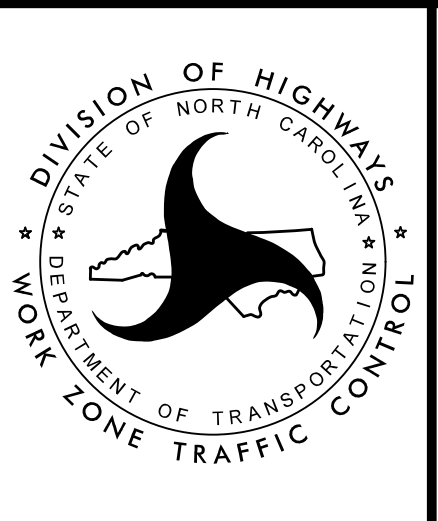
3:59:52 PM
\\B-5938_tc_pid4_rd_closure.dgn
HNTB

HNTB
HNTB NORTH CAROLINA, P.C.
343 E. SIX FORKS ROAD, SUITE 200
RALEIGH, NORTH CAROLINA 27609
NC LICENSE NO: C-1554

APPROVED: *Rhonda B. Early*
DATE: 1/18/2017

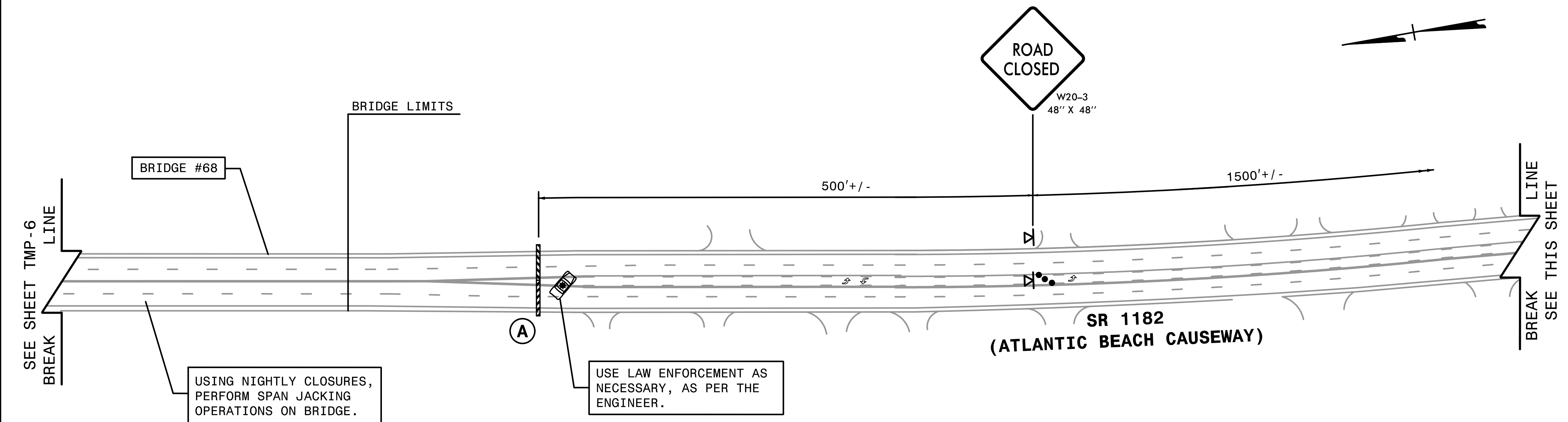
SEAL

DOCUMENT NOT CONSIDERED FINAL UNLESS ALL SIGNATURES COMPLETED



TRANSPORTATION MANAGEMENT PLAN

PHASE I, ROAD CLOSURE DETAIL

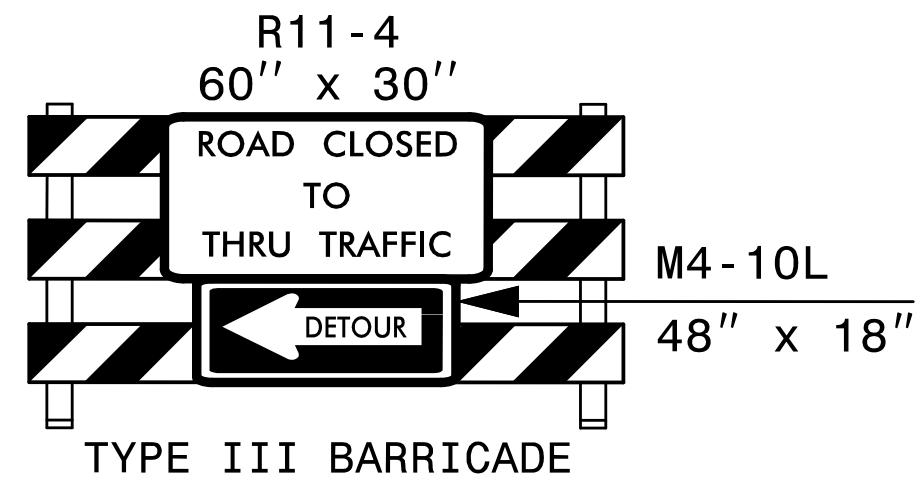
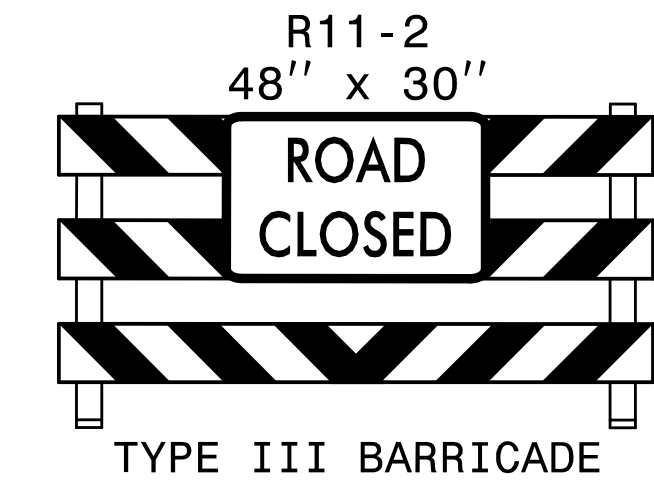


USING NIGHTLY CLOSURES, PERFORM SPAN JACKING OPERATIONS ON BRIDGE.

USE LAW ENFORCEMENT AS NECESSARY, AS PER THE ENGINEER.

SEE SHEET TMP-6
BREAK
LINE

LINE
BREAK
SEE THIS SHEET

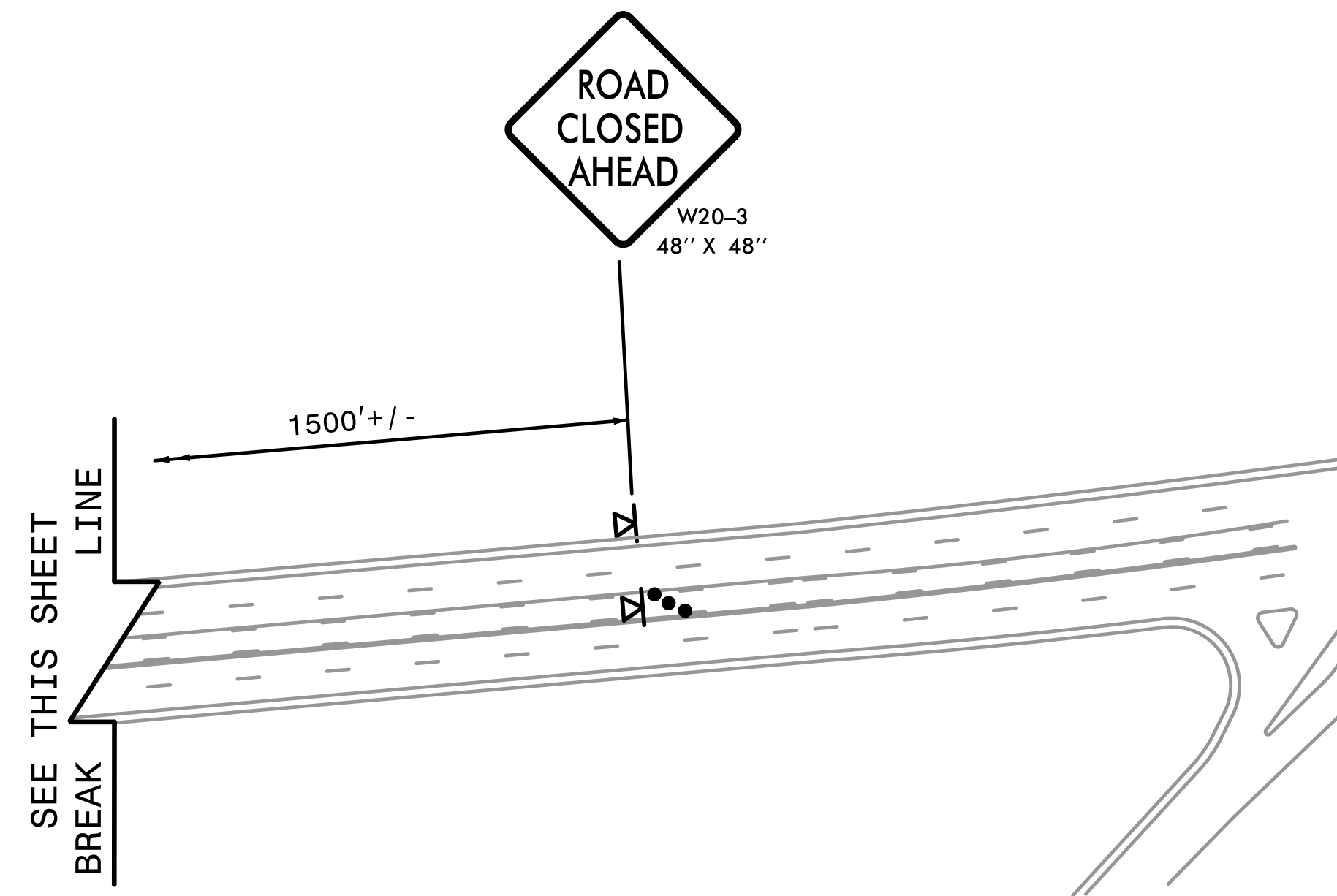


ADVISEMENT FOR ATLANTIC BEACH CAUSEWAY CLOSURE SHALL BE PLACED TWO WEEKS PRIOR TO CLOSURE.

USE DURING CLOSURE		USE PRIOR TO CLOSURE	
MESSAGE NO. 1	MESSAGE NO. 2	MESSAGE NO. 1	MESSAGE NO. 2
ATL BCH BRIDGE CLOSED	USE NC 24W TO NS58S	BRIDGE CLOSED TO XX/XX/XX	MIDNIGHT TO 4 AM
CHANGEABLE MESSAGE SIGN	CHANGEABLE MESSAGE SIGN	CHANGEABLE MESSAGE SIGN	CHANGEABLE MESSAGE SIGN

PLACE AS DIRECTED BY THE ENGINEER.

LAW ENFORCEMENT TO BE USED AS DIRECTED BY THE ENGINEER



SEE THIS SHEET
BREAK
LINE

SR 1182
(ATLANTIC BEACH CAUSEWAY)

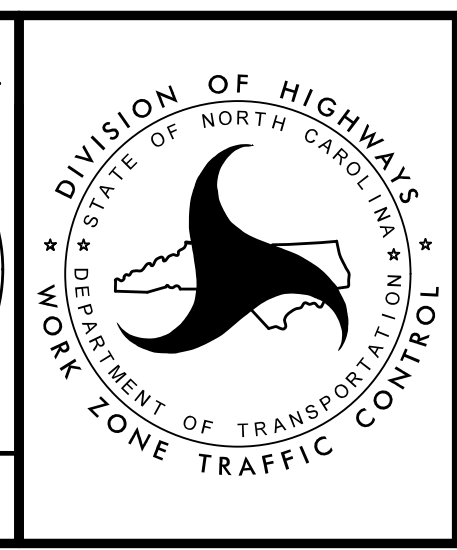
3:59:58 PM
\\B-5938_tc_pid5_r_d_closure.dgn
HNTB

HNTB
HNTB NORTH CAROLINA, P.C.
343 E. Six Forks Road, Suite 200
Raleigh, North Carolina 27609
NC License No: C-1554

APPROVED: *Rhonda B. Early*
DATE: 1/18/2017

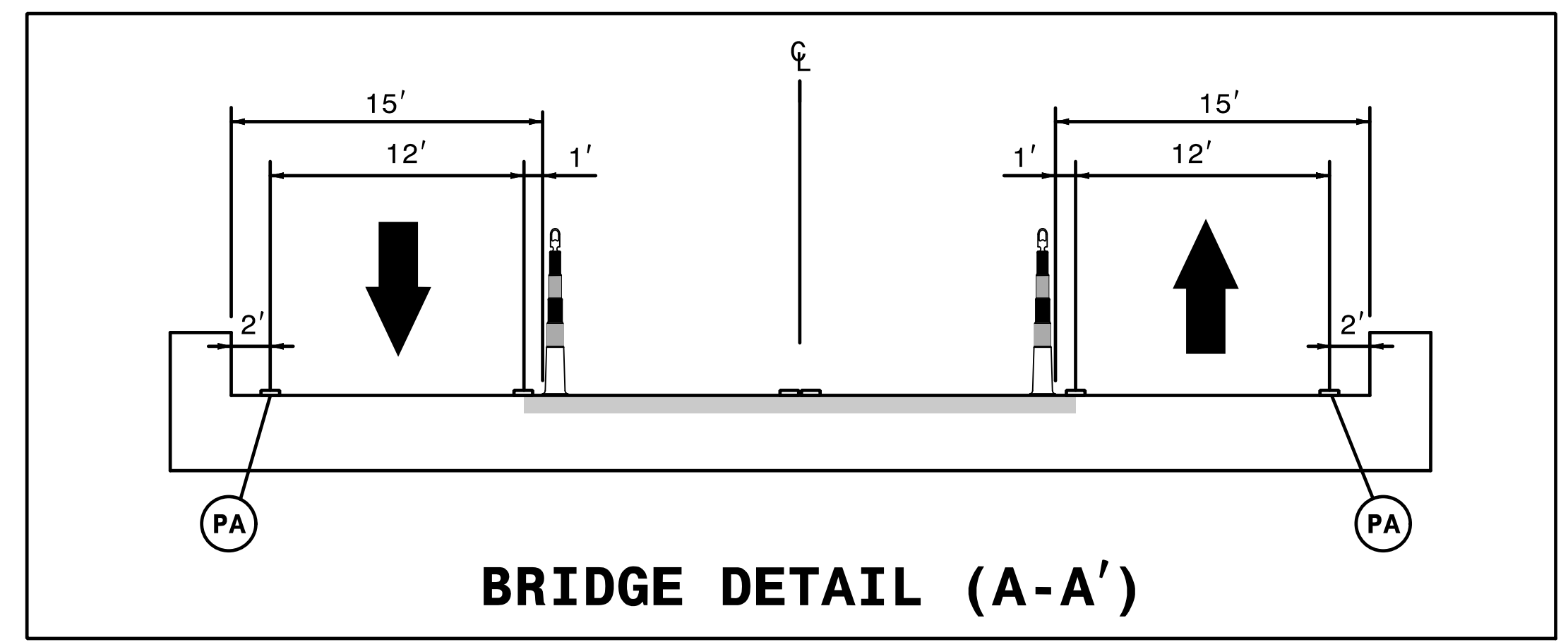
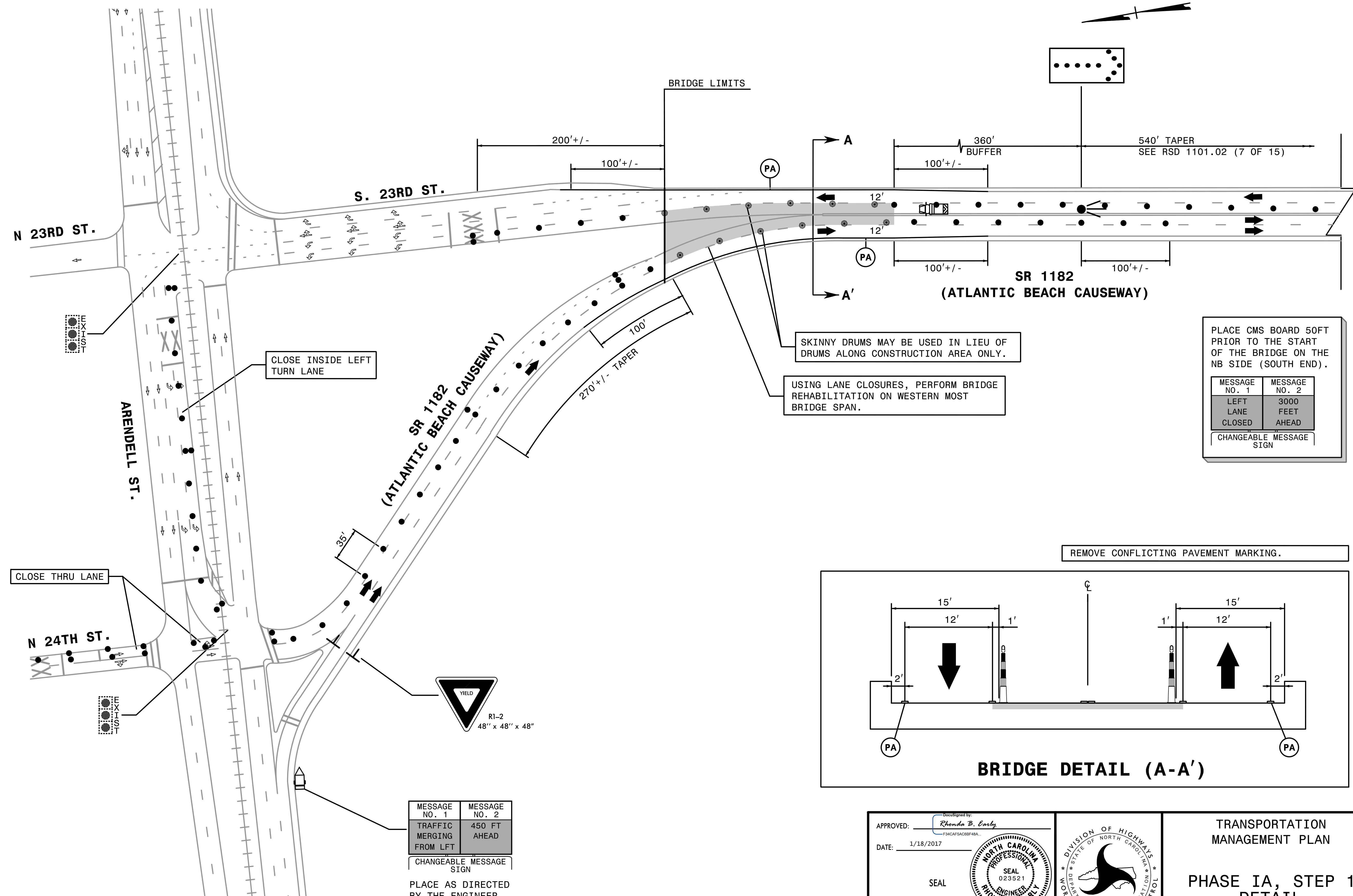
SEAL

**DOCUMENT NOT CONSIDERED FINAL
UNLESS ALL SIGNATURES COMPLETED**



TRANSPORTATION
MANAGEMENT PLAN

PHASE I, ROAD
CLOSURE DETAIL



MESSAGE NO. 1	MESSAGE NO. 2
TRAFFIC MERGING FROM LFT	450 FT AHEAD

CHANGEABLE MESSAGE SIGN

PLACE AS DIRECTED BY THE ENGINEER.

APPROVED: *Rhonda B. Early*

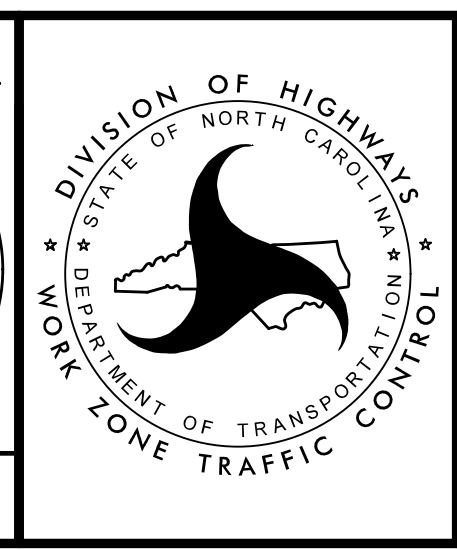
DATE: 1/18/2017

SEAL

NORTH CAROLINA PROFESSIONAL ENGINEER

SEAL 023521

RHONDA B. EARLY



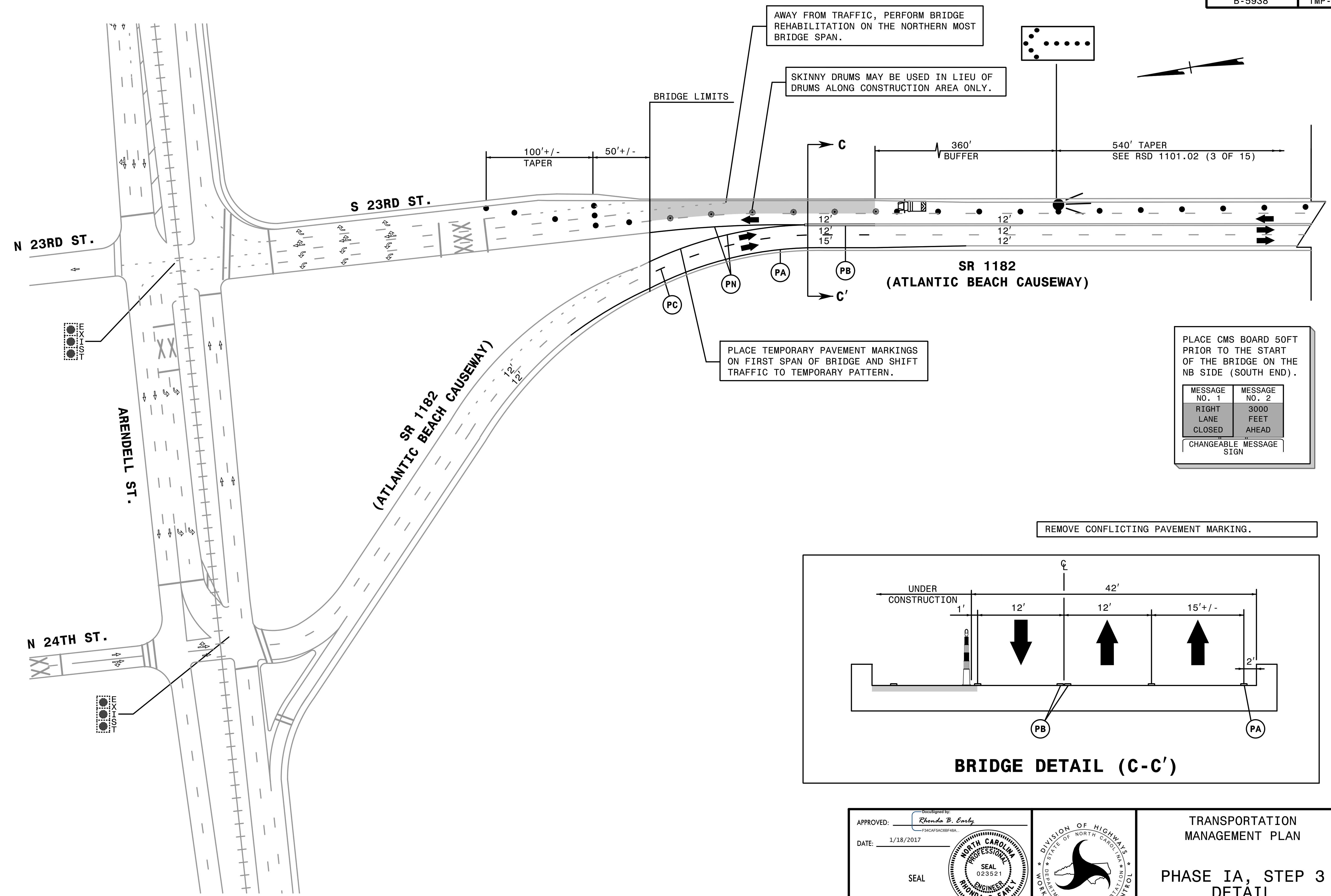
TRANSPORTATION MANAGEMENT PLAN

PHASE IA, STEP 1 DETAIL

HNTB

HNTB NORTH CAROLINA, P.C.
343 E. Six Forks Road, Suite 200
Raleigh, North Carolina 27609
NC License No: C-1554

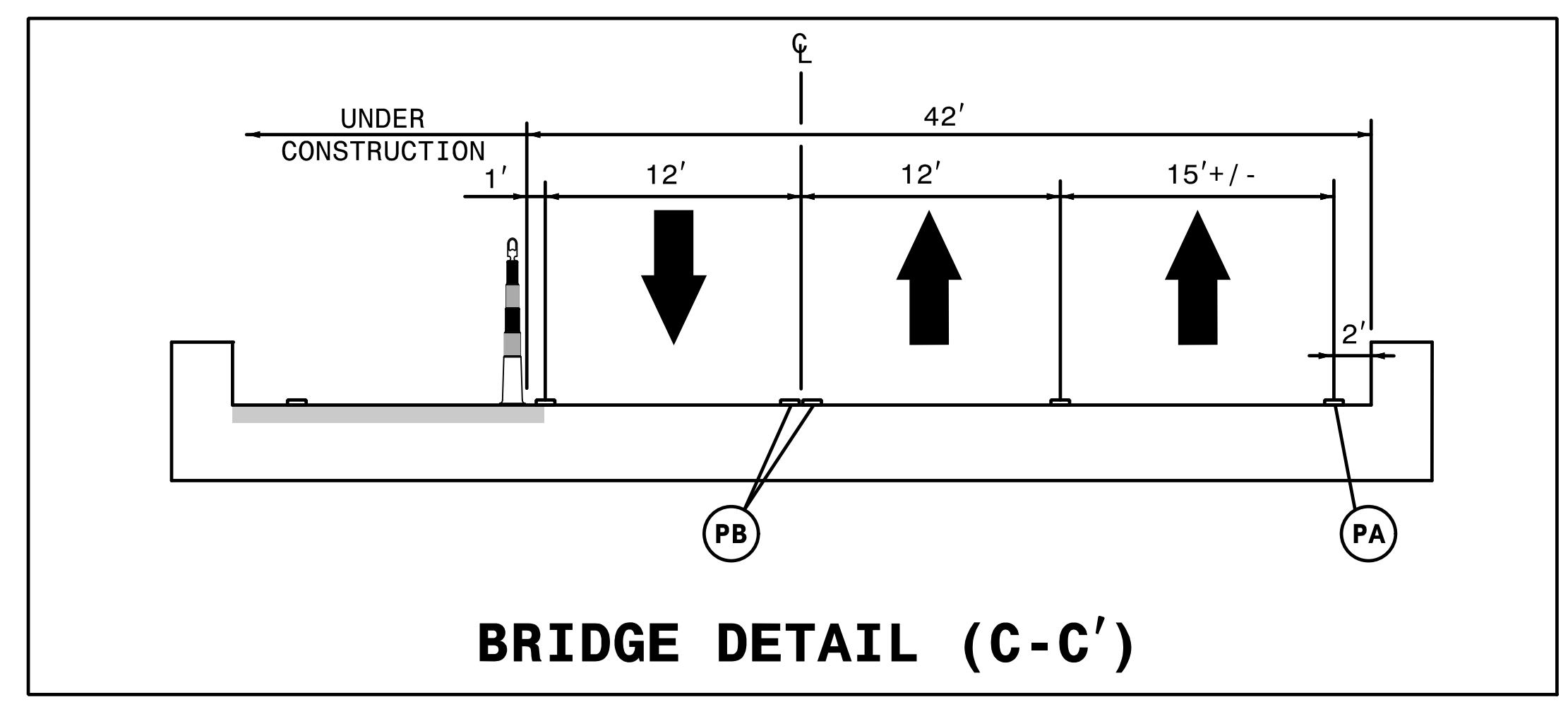
DOCUMENT NOT CONSIDERED FINAL UNLESS ALL SIGNATURES COMPLETED



PLACE CMS BOARD 50FT PRIOR TO THE START OF THE BRIDGE ON THE NB SIDE (SOUTH END).

MESSAGE NO. 1	MESSAGE NO. 2
RIGHT LANE CLOSED	3000 FEET AHEAD

CHANGEABLE MESSAGE SIGN

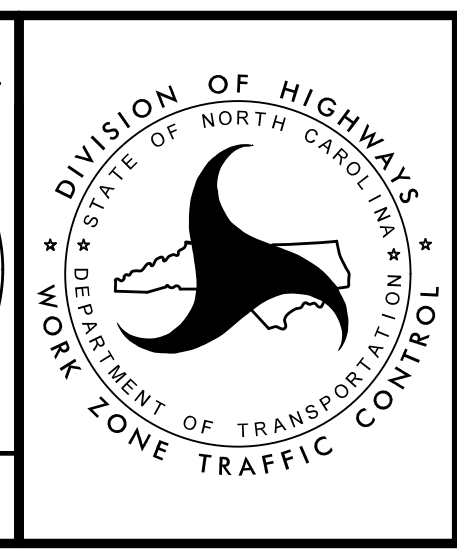


4:00:16 PM
 \\TC\B-5938_fc.plad3.dgn
 HNTB



APPROVED: *Rhonda B. Early*
 DATE: 1/18/2017

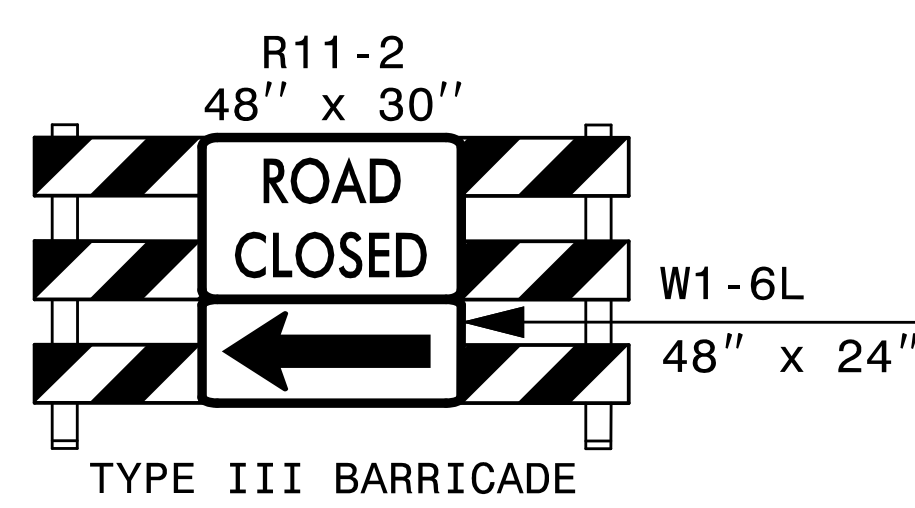
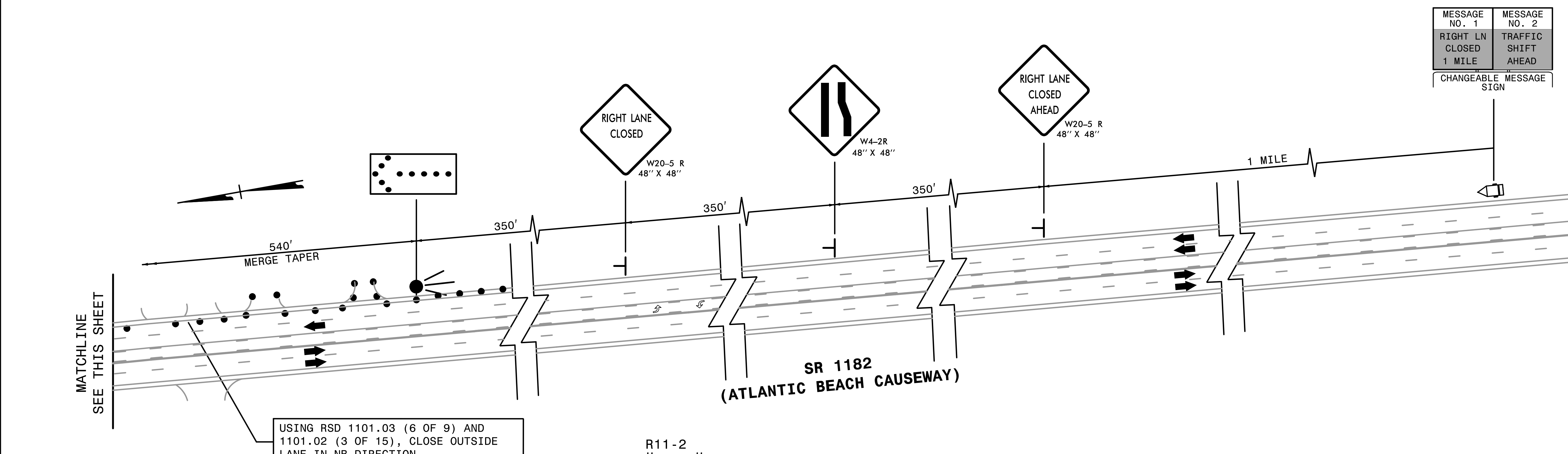
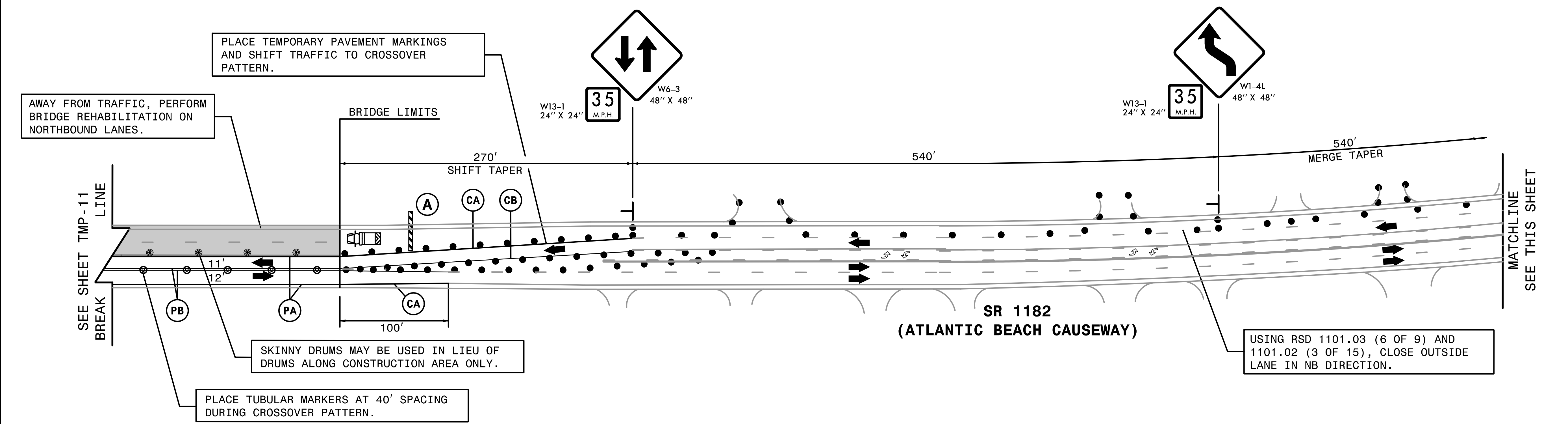
SEAL



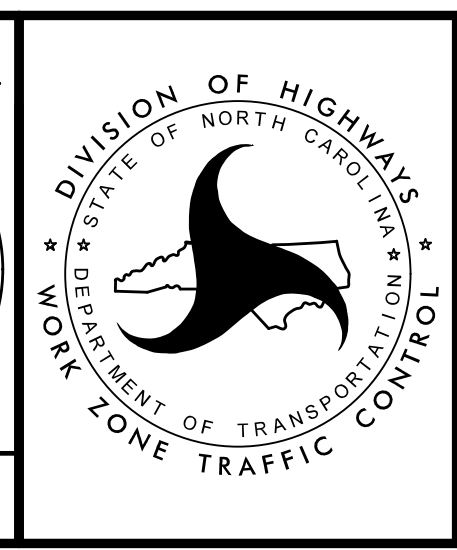
TRANSPORTATION MANAGEMENT PLAN

PHASE IA, STEP 3
 DETAIL

DOCUMENT NOT CONSIDERED FINAL UNLESS ALL SIGNATURES COMPLETED



APPROVED: *Rhonda B. Early*
 DATE: 1/18/2017
 SEAL
 NORTH CAROLINA PROFESSIONAL ENGINEER
 R. B. EARLY
 023521

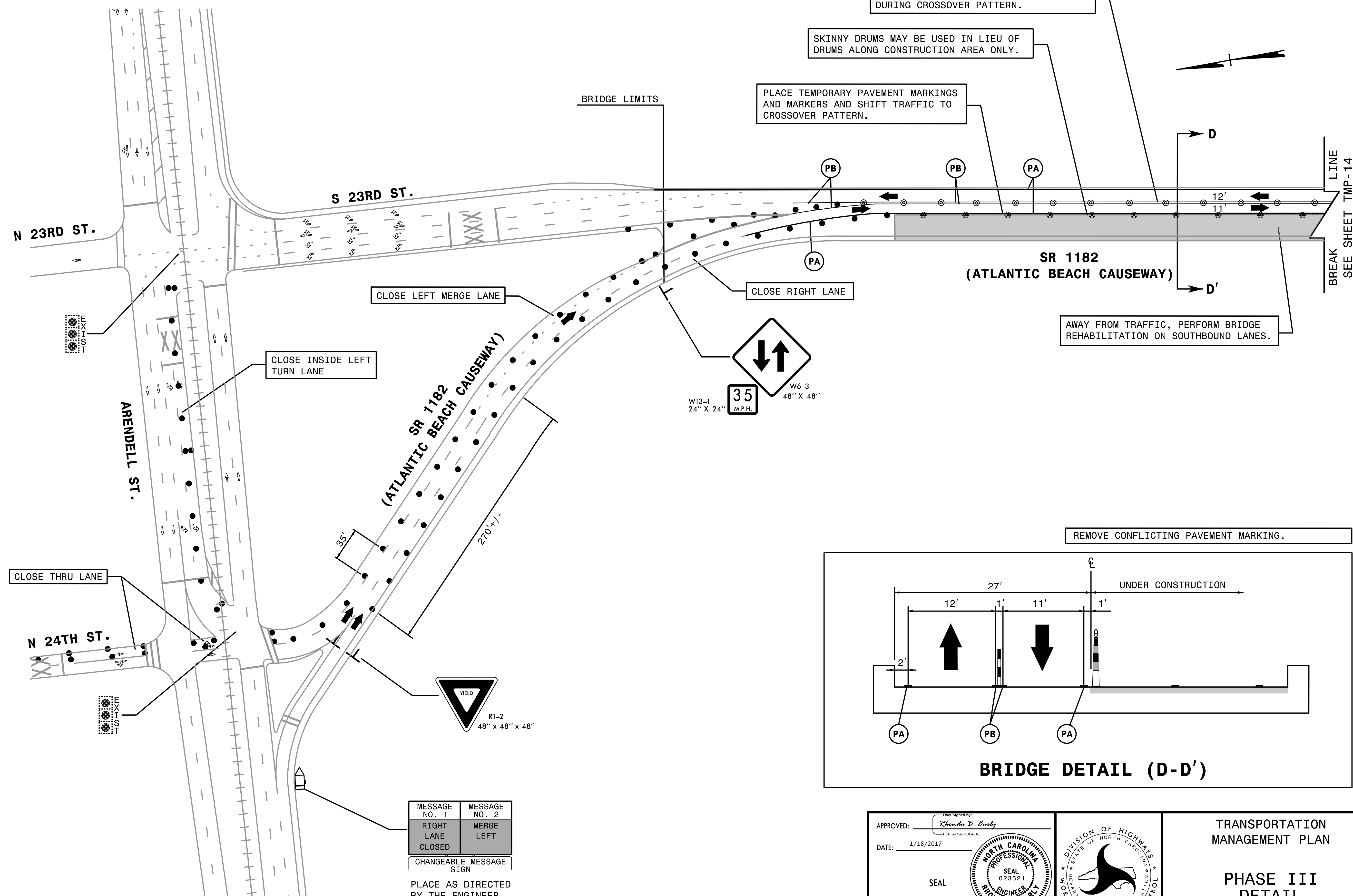


TRANSPORTATION MANAGEMENT PLAN
 PHASE II
 DETAIL

DOCUMENT NOT CONSIDERED FINAL
 UNLESS ALL SIGNATURES COMPLETED

HNTB
 HNTB NORTH CAROLINA, P.C.
 343 E. Six Forks Road, Suite 200
 Raleigh, North Carolina 27609
 NC License No: C-1554

4:00:28 PM
 \\TCP\B-5938_fc.p2d2.dgn
 HNTB



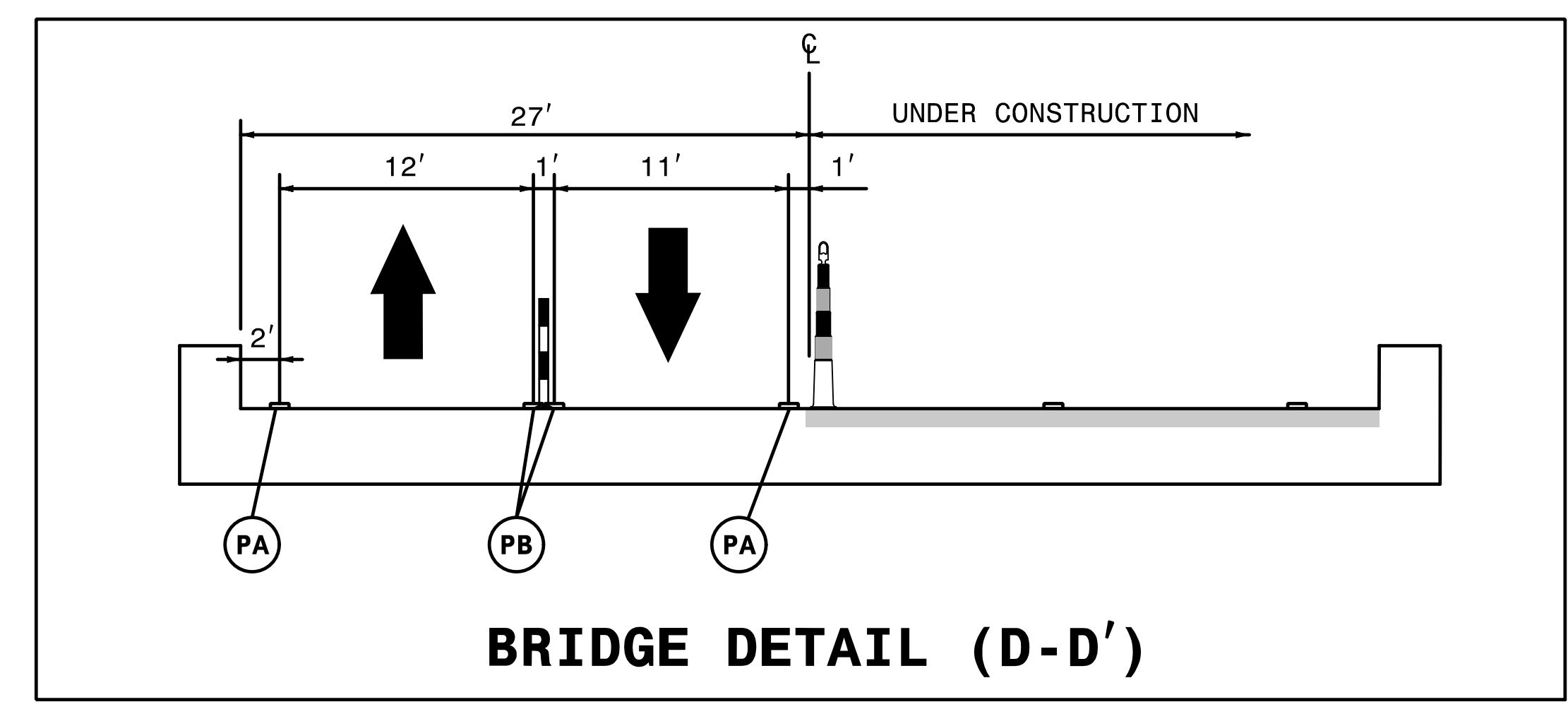
PLACE TUBULAR MARKERS AT 40' SPACING DURING CROSSOVER PATTERN.

SKINNY DRUMS MAY BE USED IN LIEU OF DRUMS ALONG CONSTRUCTION AREA ONLY.

PLACE TEMPORARY PAVEMENT MARKINGS AND MARKERS AND SHIFT TRAFFIC TO CROSSOVER PATTERN.

AWAY FROM TRAFFIC, PERFORM BRIDGE REHABILITATION ON SOUTHBOUND LANES.

REMOVE CONFLICTING PAVEMENT MARKING.



BRIDGE DETAIL (D-D')

MESSAGE NO. 1	MESSAGE NO. 2
RIGHT LANE CLOSED	MERGE LEFT

CHANGEABLE MESSAGE SIGN

PLACE AS DIRECTED BY THE ENGINEER.

APPROVED: *Rhonda B. Early*
DocuSigned by: Rhonda B. Early
F34CAFACBBF48A

DATE: 1/18/2017

SEAL

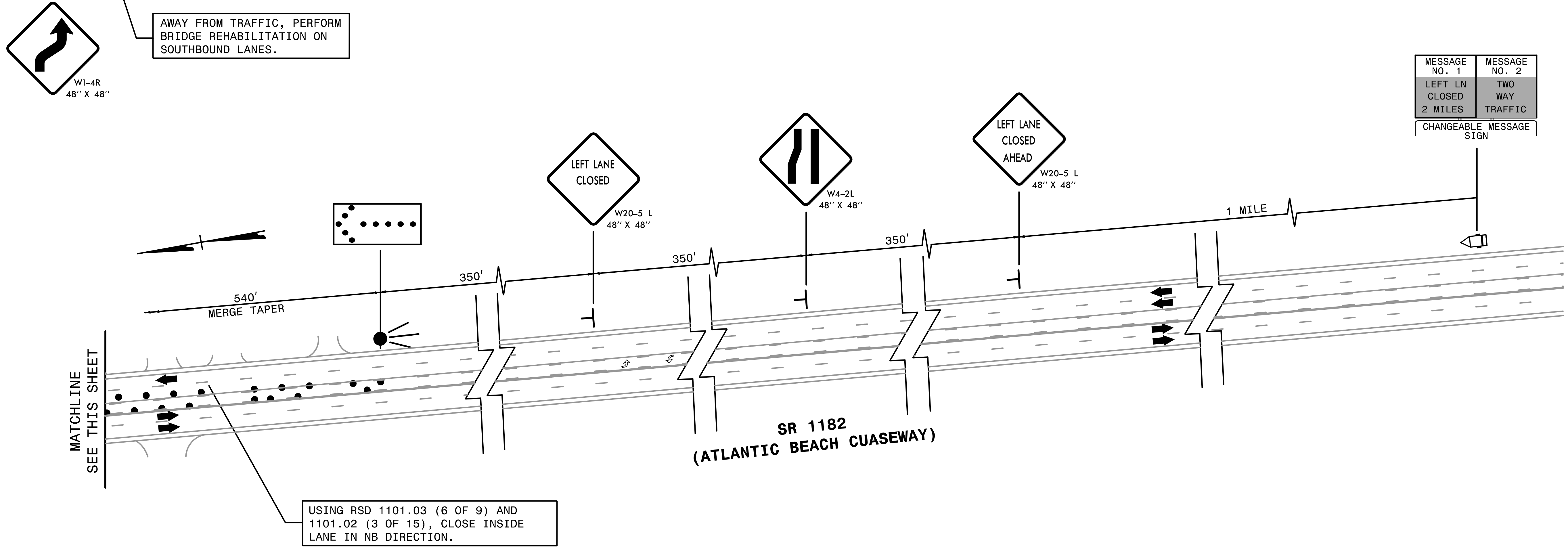
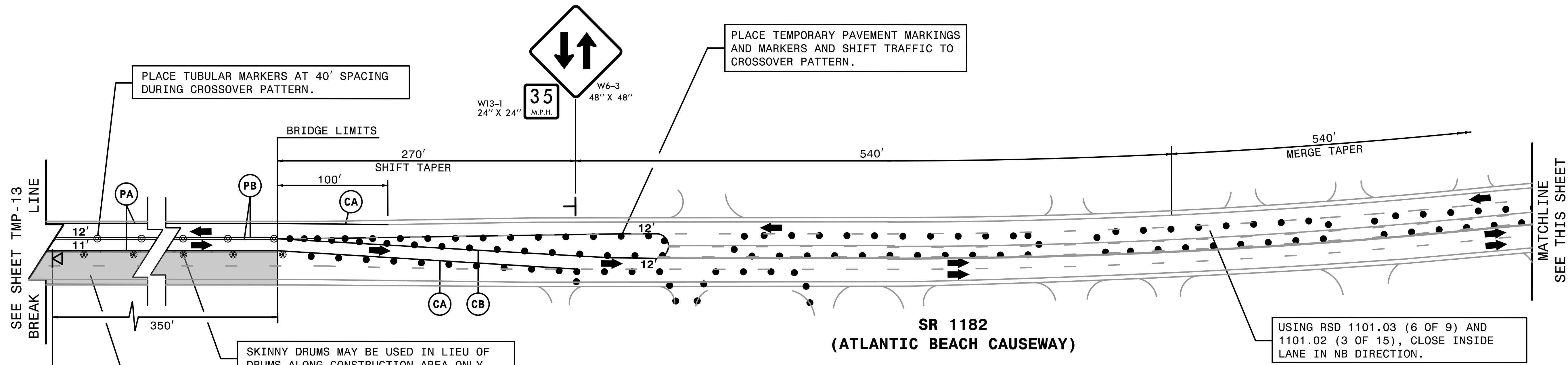
TRANSPORTATION MANAGEMENT PLAN

PHASE III DETAIL

HNTB NORTH CAROLINA, P.C.
 343 E. Six Forks Road, Suite 200
 Raleigh, North Carolina 27609
 NC License No: C-1554

DOCUMENT NOT CONSIDERED FINAL UNLESS ALL SIGNATURES COMPLETED

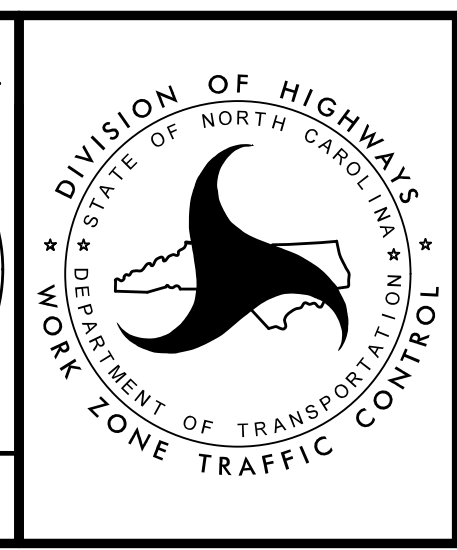
4:00:33 PM
\\TCP\B-5938_fc.p3d1.dgn
HNTB



4:00:39 PM
\\TCP\B-5938_fc.p3d2.dgn
HNTB

HNTB
HNTB NORTH CAROLINA, P.C.
343 E. Six Forks Road, Suite 200
Raleigh, North Carolina 27609
NC License No: C-1554

APPROVED: *Rhonda B. Early*
DATE: 1/18/2017
SEAL
NORTH CAROLINA PROFESSIONAL ENGINEER
RHONDA B. EARLY
023521



TRANSPORTATION
MANAGEMENT PLAN

PHASE III
DETAIL

DOCUMENT NOT CONSIDERED FINAL
UNLESS ALL SIGNATURES COMPLETED