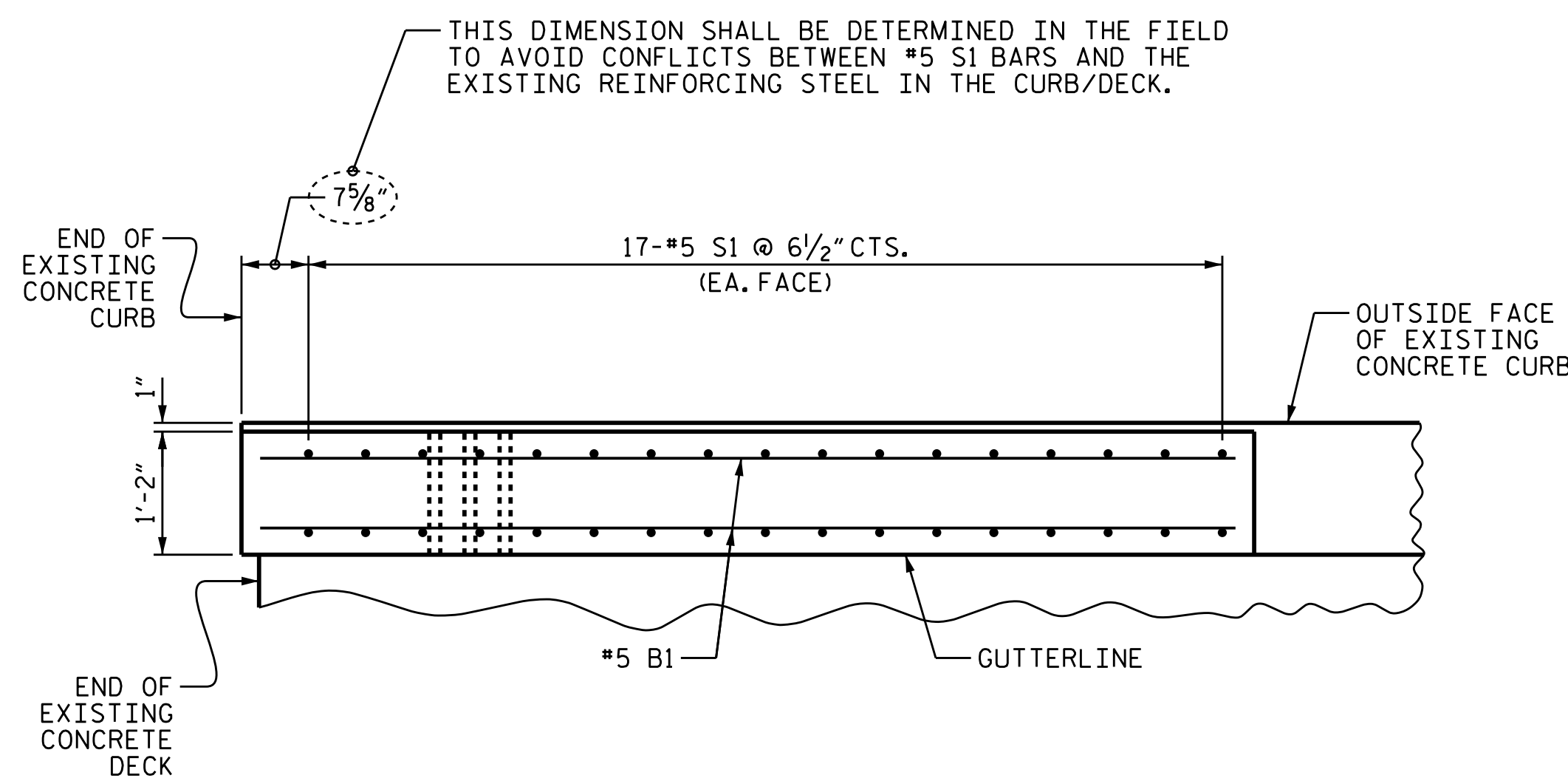


BILL OF MATERIAL FOR PARAPETS AND END POSTS

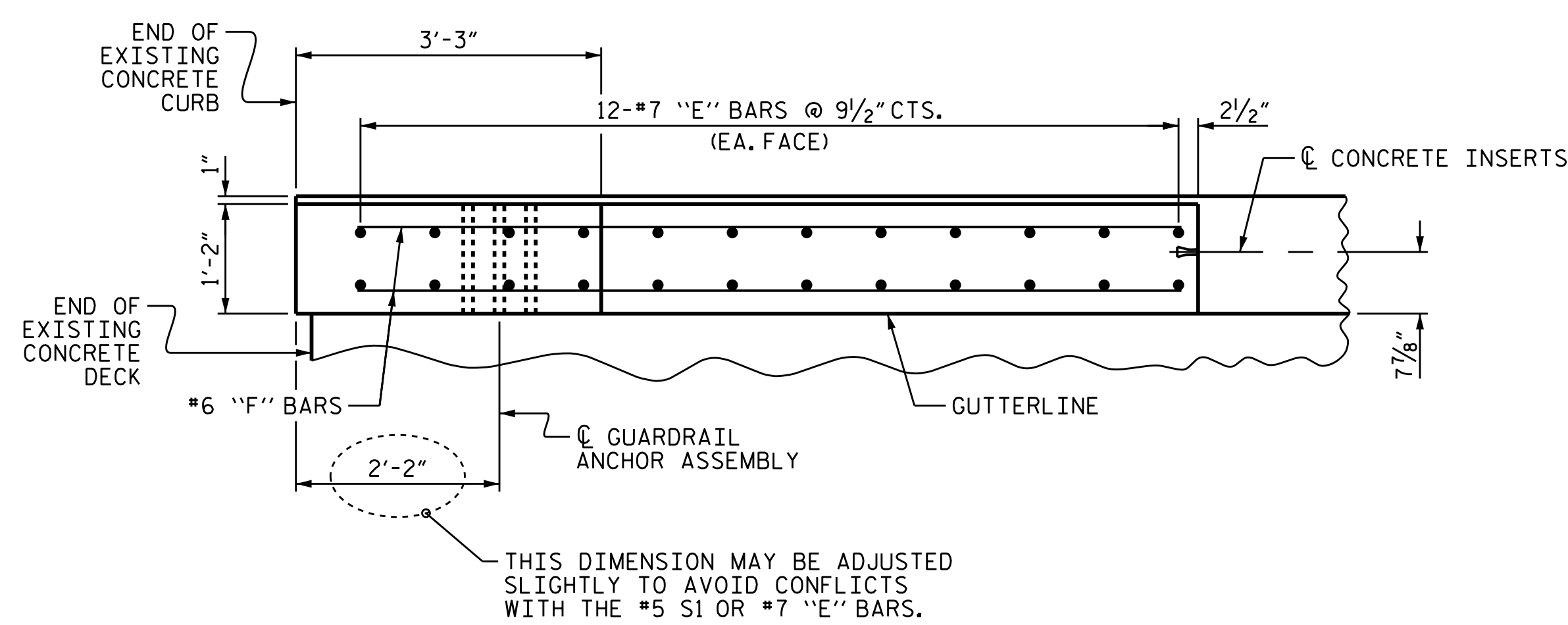
BAR	NO.	SIZE	TYPE	LENGTH	WEIGHT
*B1	24	#5	STR	9'-3"	232
*E1	8	#7	STR	1'-10"	30
*E2	8	#7	STR	2'-4"	38
*E3	8	#7	STR	2'-10"	46
*E4	8	#7	STR	3'-4"	55
*E5	64	#7	STR	3'-7"	469
*F1	8	#6	STR	6'-2"	74
*F2	8	#6	STR	7'-6"	90
*F3	8	#6	STR	8'-8"	104
*F4	8	#6	STR	3'-3"	39
*S1	136	#5	STR	2'-6"	355

*EPOXY COATED REINFORCING STEEL LBS. 1532
 CLASS AA CONCRETE CU. YDS. 5.9

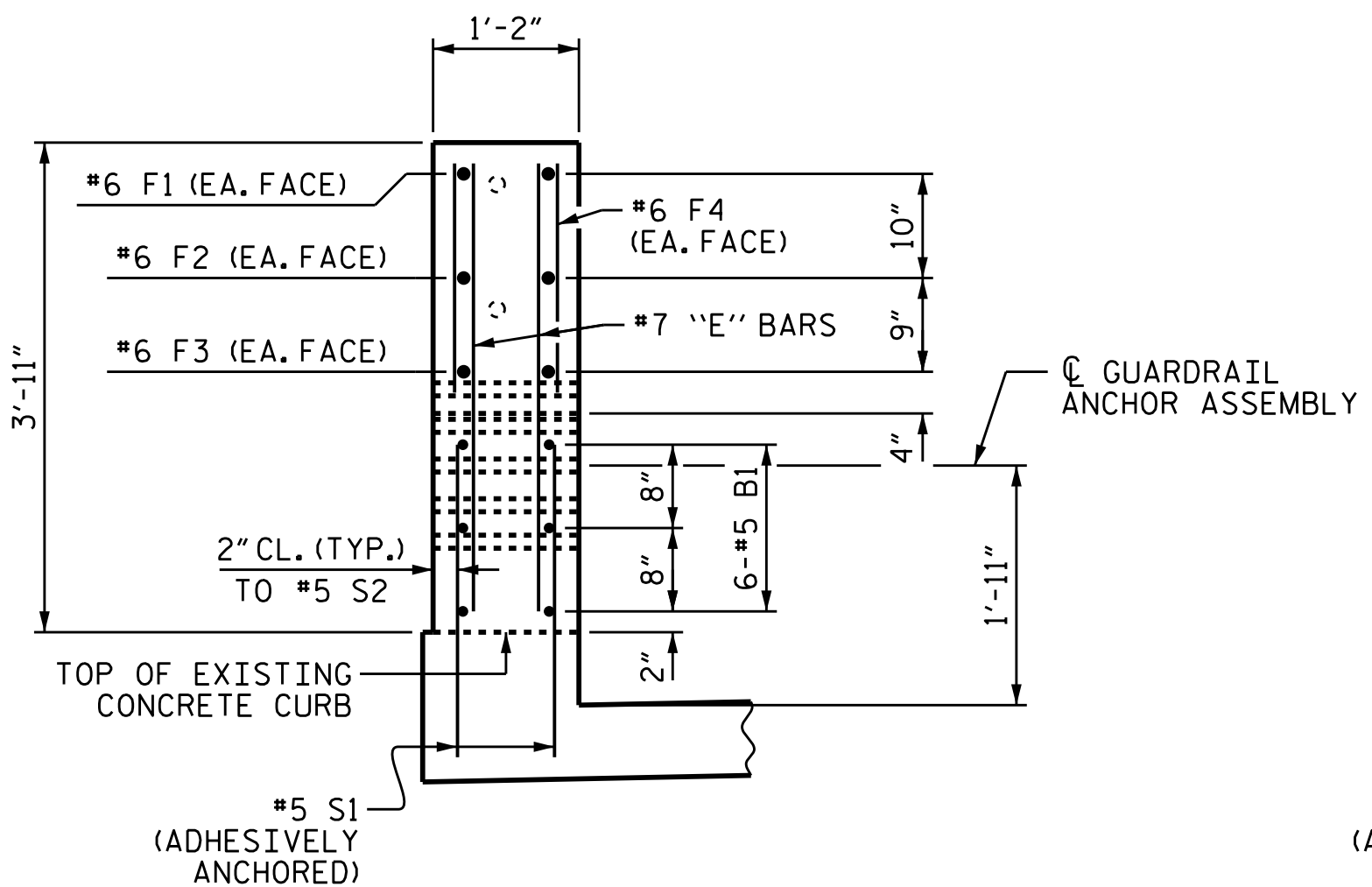


PLAN OF PARAPET

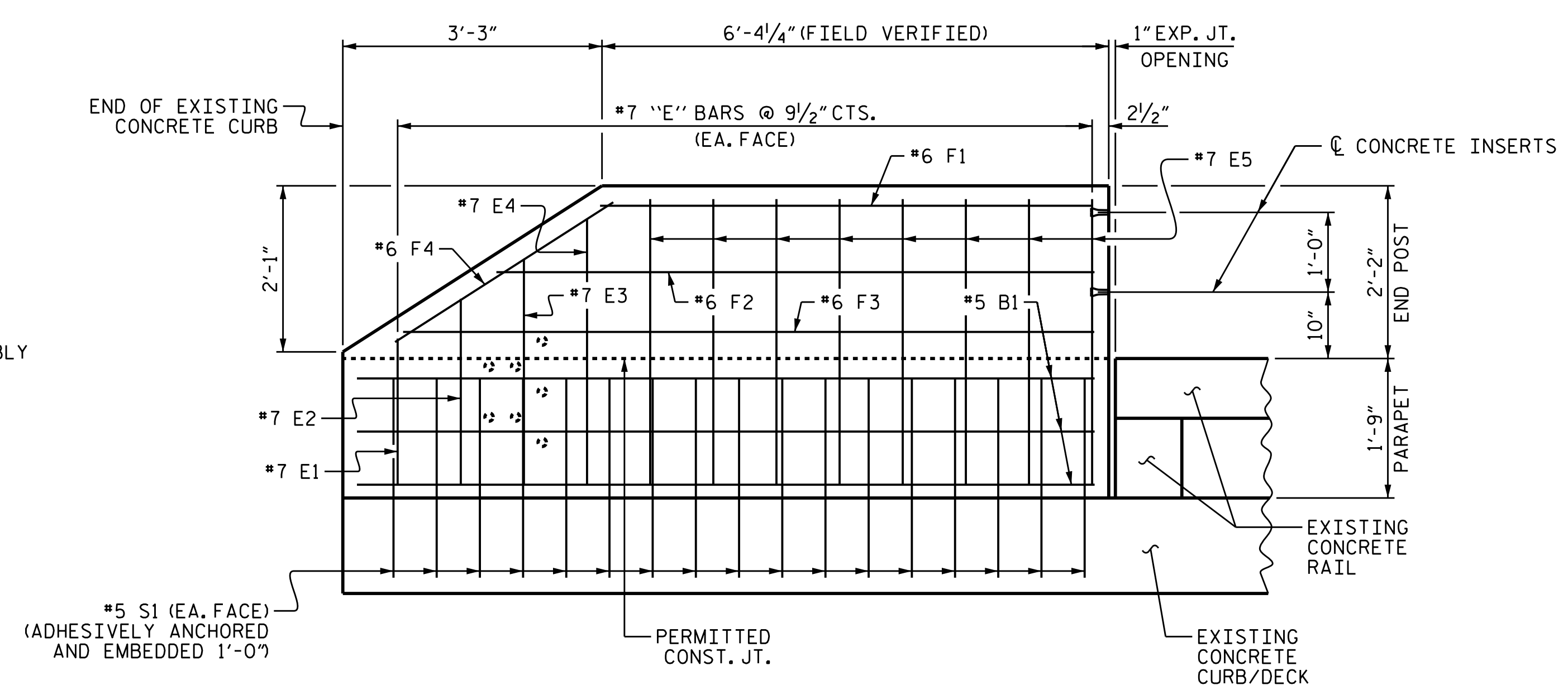
#5 S1 BARS MAY BE SHIFTED TO AVOID DRILLING THROUGH REINFORCING STEEL IN EXISTING BRIDGE DECK.



PLAN OF END POST



END VIEW



ELEVATION

PARAPET AND END POST FOR TWO BAR METAL RAIL

PROJECT NO. B-5939
CARTERET COUNTY
 BRIDGE NO. 6

SHEET 7 OF 8



STATE OF NORTH CAROLINA
 DEPARTMENT OF TRANSPORTATION
 RALEIGH
PARAPET AND END POST FOR TWO BAR METAL RAIL

DRAWN BY : P. K. NEWTON DATE : 1/20/17
 CHECKED BY : G. W. DICKEY DATE : 1/23/17

DOCUMENT NOT CONSIDERED FINAL UNLESS ALL SIGNATURES COMPLETED

REVISIONS						SHEET NO.
NO.	BY:	DATE:	NO.	BY:	DATE:	TOTAL SHEETS
1			3			S2-12
2			4			