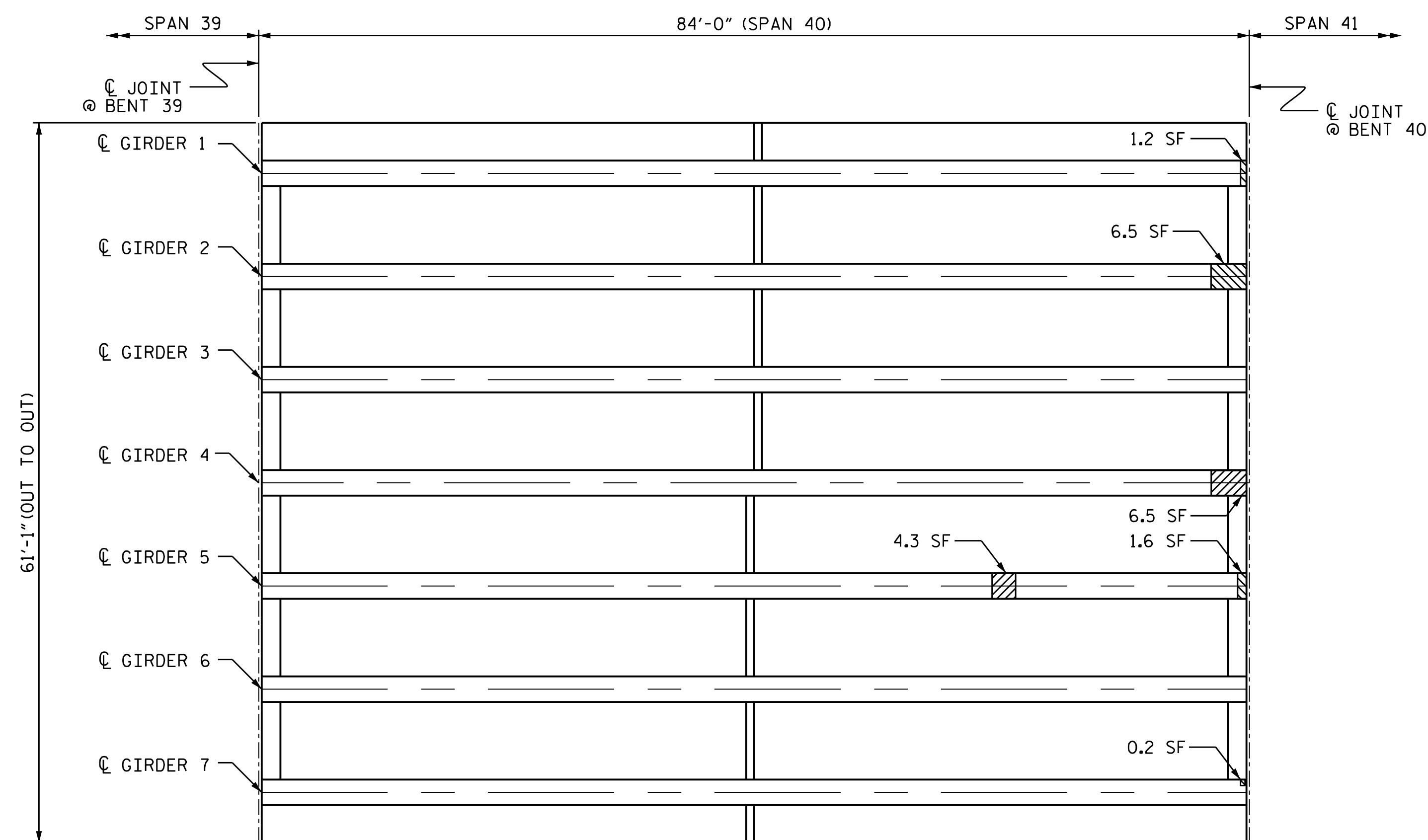


SPAN 39 - UNDERSIDE



SPAN 40 - UNDERSIDE

REPAIR QUANTITY TABLE				
REPAIRS SPAN 39	QUANTITIES			
	ESTIMATE		ACTUAL	
	AREA SF	VOLUME CF	AREA SF	VOLUME CF
PRESTRESSED CONCRETE GIRDER REPAIR	19.5	5.7		
SHOTCRETE REPAIRS	4.0	2.0		
REPAIRS SPAN 40	QUANTITIES			
	ESTIMATE		ACTUAL	
	AREA SF	VOLUME CF	AREA SF	VOLUME CF
PRESTRESSED CONCRETE GIRDER REPAIR	20.2	5.9		
SHOTCRETE REPAIRS	0.0	0.0		

NOTES:

SPANS WILL RECEIVE FULL LENGTH TSA COATING, SEE "PRESTRESSED CONCRETE GIRDERS WITH THERMAL SPRAY ANODE" SPECIAL PROVISION AND SHEETS S1-40THRU S1-43.

FOR GIRDER & DIAPHRAGM AND UNDERDECK REPAIRS SEE "TYPICAL GIRDER, UNDERDECK AND DIAPHRAGM REPAIR DETAILS" SHEET.

FOR PRESTRESSED CONCRETE GIRDER REPAIR, SEE "PRESTRESSED CONCRETE GIRDERS WITH THERMAL SPRAY ANODE" SPECIAL PROVISION.

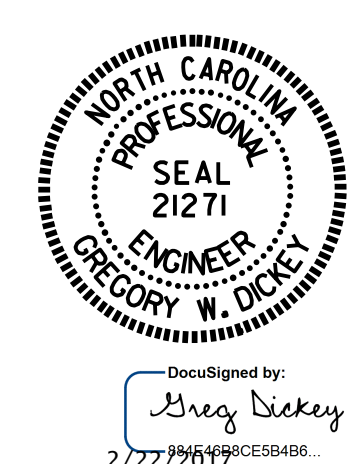
FOR SHOTCRETE REPAIRS, SEE SPECIAL PROVISIONS.

VALUES IN CHART REPRESENT ESTIMATED REPAIR TOTALS AFTER REMOVAL OF UNSOUND CONCRETE TO REPAIR DEPTH AND MIN. 1" CL. TO SAW CUT. SEE REPAIR DETAILS.

- PRESTRESSED CONCRETE GIRDER REPAIR
- SHOTCRETE REPAIRS

PROJECT NO. B-5938
CARTERET COUNTY
 BRIDGE NO. 68

SHEET 20 OF 24



STATE OF NORTH CAROLINA
 DEPARTMENT OF TRANSPORTATION
 RALEIGH

FRAMING PLAN
 SPANS 39 & 40

DRAWN BY : P. D. BRYANT / S. T. SANDOR DATE : 8/2016
 CHECKED BY : P. D. BYRANT DATE : 8/2016

DOCUMENT NOT CONSIDERED FINAL UNLESS ALL SIGNATURES COMPLETED

REVISIONS						SHEET NO.
NO.	BY:	DATE:	NO.	BY:	DATE:	S1-34
1			3			TOTAL SHEETS
2			4			-