

Table with 4 columns: NCDOT SIGNAL INVENTORY NUMBER, INTERSECTION, SIGNAL SHEET NUMBER, CABLE ROUTING SHEET NUMBER. Contains 100 rows of intersection data.

Table with 4 columns: NCDOT SIGNAL INVENTORY NUMBER, INTERSECTION, SIGNAL SHEET NUMBER, CABLE ROUTING SHEET NUMBER. Contains 100 rows of intersection data.

Table with 4 columns: NCDOT SIGNAL INVENTORY NUMBER, INTERSECTION, SIGNAL SHEET NUMBER, CABLE ROUTING SHEET NUMBER. Contains 100 rows of intersection data.

Table with 4 columns: NCDOT SIGNAL INVENTORY NUMBER, INTERSECTION, SIGNAL SHEET NUMBER, CABLE ROUTING SHEET NUMBER. Contains 25 rows of intersection data.

Table with 4 columns: NCDOT SIGNAL INVENTORY NUMBER, INTERSECTION, SIGNAL SHEET NUMBER, CABLE ROUTING SHEET NUMBER. Contains 25 rows of intersection data.

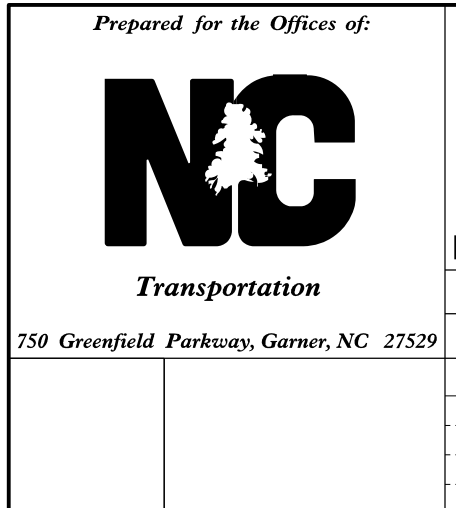
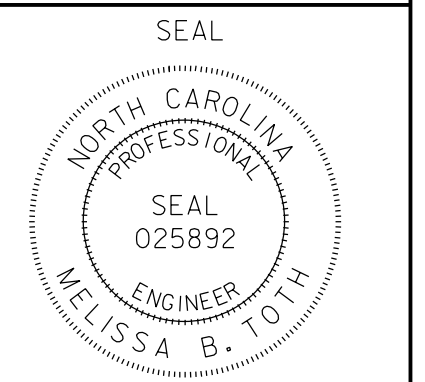
Table with 4 columns: NCDOT SIGNAL INVENTORY NUMBER, INTERSECTION, SIGNAL SHEET NUMBER, CABLE ROUTING SHEET NUMBER. Contains 25 rows of intersection data.

22-DEC-2016 15:47 04-ATKINS\proj\atkins\tr\off\c\curr\100048632 U-4715B Asheville\116 Sig System\Task 11_Typ_SDW\Volume 3\SIG 1.00C.dgn

ATKINS 1616 EAST MILLBROOK ROAD, SUITE 160 RALEIGH, NORTH CAROLINA 27609 (919) 876-6888 NCBEES #F-0326

Asheville Signal System State Signal Plans Index Sheet. Includes project details, revision table, and professional seal of Melissa B. Toth.

DOCUMENT NOT CONSIDERED FINAL UNLESS ALL SIGNATURES COMPLETED



Division 13 Buncombe County Asheville. Prepared by: J. A. Wiles. Reviewed by: M. B. Toth.

Disseminated by: Melissa B. Toth 12/22/2016 DATE