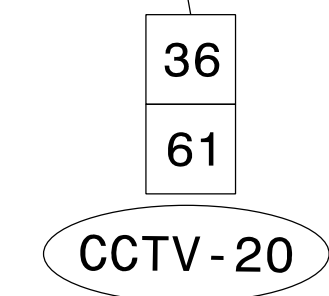
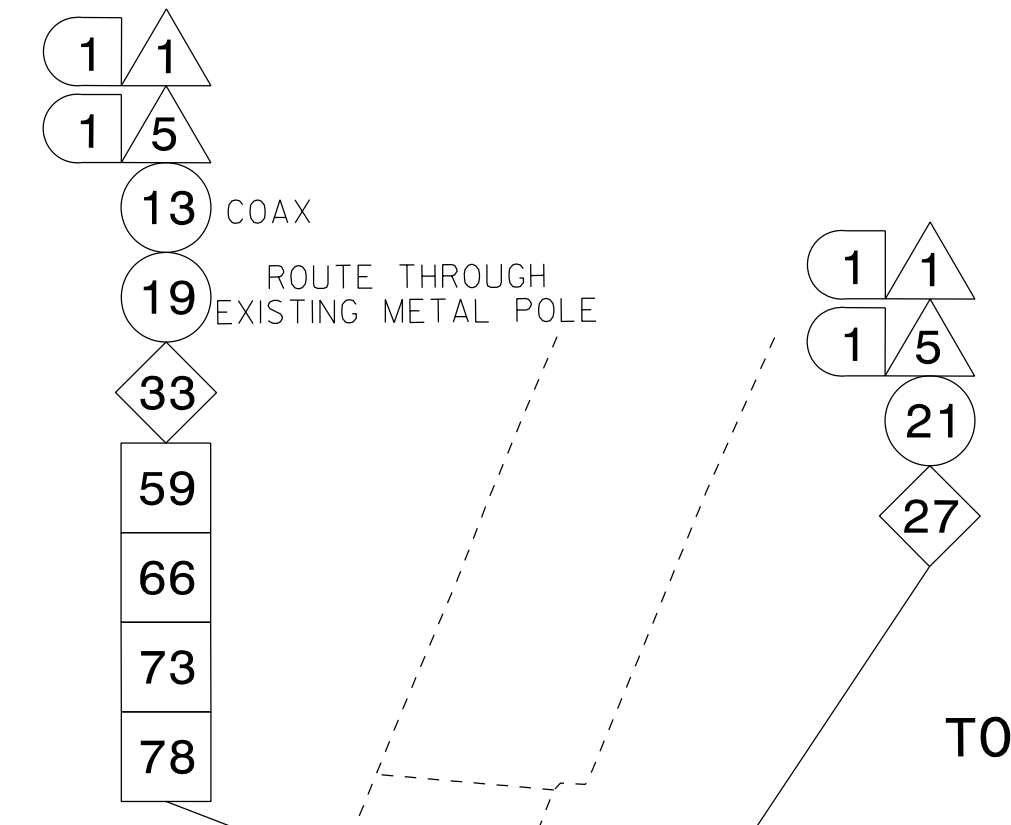


TO CCTV-21 ON CRP-6.329

TO NC 191 (BREVARD ROAD) INTERCHANGE ON CRP-6.130

TO COLLECTION POINT REPEATER ON CRP-6.327

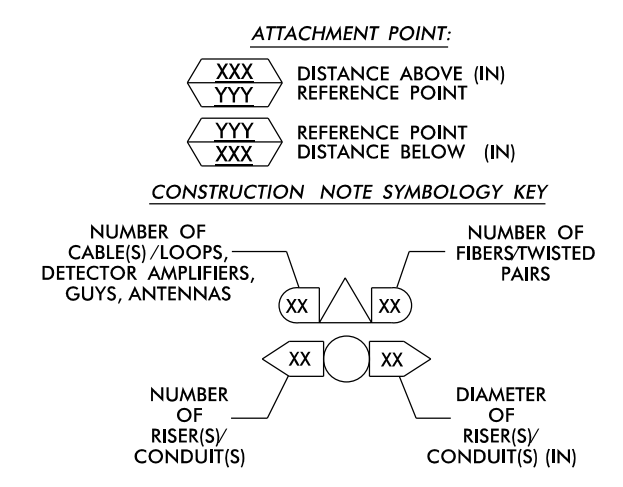


GPS COORDINATES: N 35 33.437 W 82 36.501

NOTES:

- 1. UNLESS OTHERWISE NOTED:
- OVERLASH NEW FIBER OPTIC CABLE TO EXISTING COMMUNICATIONS CABLE.
- ATTACH NEW MESSENGER CABLE 40" BELOW POWER.
- ATTACH ON FRONT SIDE (FS) OF POLE.
2. SEAL ALL CONDUIT ENDS WITH DUCT AND CONDUIT SEALER, AT ALL JUNCTION BOX / CABINET ENTRANCES.

Table with 4 columns of callout numbers and descriptions for cable installation, equipment, and materials. Includes items like 'INSTALL COMPOSITE CCTV CABLE', 'INSTALL HEAT SHRINK TUBING', 'INSTALL DIGITAL VIDEO ENCODER', etc.



ATKINS 1616 EAST MILLBROOK ROAD, SUITE 160 RALEIGH, NORTH CAROLINA 27609 (919) 876-6888 NCBEEES #F-0326

Project information block including 'Asheville Signal System Cable Routing Plans', 'Division 13 Buncombe County Asheville', 'Prepared by: J A Wiles', 'Reviewed by: M B Toth', and a professional seal for Melissa B. Toth, Engineer.

22-DEC-2016 10:16 0:47:15B Asheville\116 Sig Sys\Task 11-CL\ACL 328.dgn