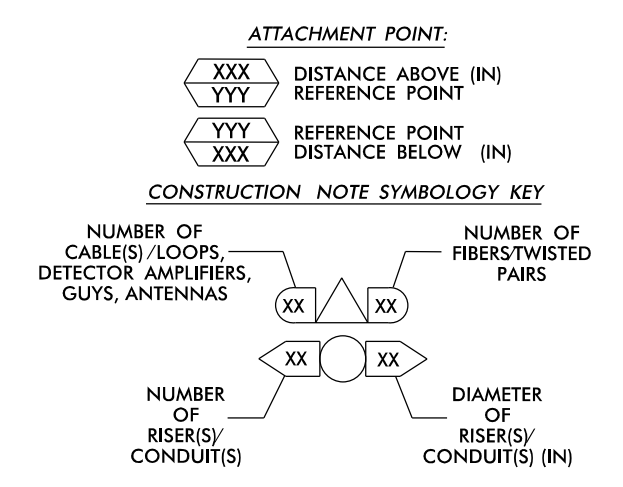


This area has been determined to contain properties with documented historic significance. If it is necessary to deviate from these plans in this area, alert the Engineer to contact Project Development and Environmental Analysis Branch – Historic Architecture Group of the North Carolina Department of Transportation for an effects determination before proceeding.

EXPRESS FIBERS  
SEE SPLICE DETAIL  
DO NOT CUT CABLE

- NOTES:**
- UNLESS OTHERWISE NOTED:
    - OVERLASH NEW FIBER OPTIC CABLE TO EXISTING COMMUNICATIONS CABLE.
    - ATTACH NEW MESSENGER CABLE 40" BELOW POWER.
    - ATTACH ON FRONT SIDE (FS) OF POLE.
  - SEAL ALL CONDUIT ENDS WITH DUCT AND CONDUIT SEALER, AT ALL JUNCTION BOX / CABINET ENTRANCES.

|                                                                   |                                                                                    |                                                                                        |                                                              |                                                                                    |                                                                   |                                                     |
|-------------------------------------------------------------------|------------------------------------------------------------------------------------|----------------------------------------------------------------------------------------|--------------------------------------------------------------|------------------------------------------------------------------------------------|-------------------------------------------------------------------|-----------------------------------------------------|
| 1. INSTALL COMPOSITE CCTV CABLE                                   | 13. INSTALL HEAT SHRINK TUBING RETROFIT KIT                                        | 25. INSTALL NEW RISER INTO POLE MOUNTED CABINET                                        | 37. INSTALL CCTV WOOD POLE                                   | 49. REMOVE EXISTING COMMUNICATIONS CABLE                                           | 60A. INSTALL NEW POLE MOUNTED CABINET FOR ANTENNA (RADIO CABINET) | 72. INSTALL 900 MHZ RADIO WITH PANEL ANTENNA        |
| 2. INSTALL LOW VOLTAGE POWER CABLE (24VAC)                        | 14. INSTALL HIGH DENSITY POLYETHYLENE CONDUIT                                      | 26. INSTALL DIGITAL VIDEO ENCODER                                                      | 38. INSTALL STANDARD SIZE JUNCTION BOX                       | 50. INSTALL WIRELESS DSL                                                           | 61. REMOVE EXISTING CCTV CAMERA ASSEMBLY                          | 73. INSTALL 2.4 GHZ ETHERNET RADIO AND YAGI ANTENNA |
| 3. INSTALL CATEGORY 5E CABLE                                      | 15. DIRECTIONAL DRILL CONDUIT                                                      | 27. INSTALL NEW ETHERNET EDGE SWITCH IN CABINET                                        | 39. INSTALL SPECIAL-SIZED JUNCTION BOX                       | 51. INSTALL CABLE STORAGE GUIDE(S) [SNOW SHOE(S)] AND STORE 100 FEET OF EACH CABLE | 62. NEW CABINET ENTRANCE INTO NEW FOUNDATION                      | 74. INSTALL 2.4 GHZ ETHERNET RADIO                  |
| 4. INSTALL SMFO CABLE                                             | 16. BORE AND JACK CONDUIT                                                          | 28. INSTALL INTERCONNECT CENTER PATCH PANEL JUMPERS AND FUSION SPLICE CABLE IN CABINET | 40. INSTALL OVER-SIZED JUNCTION BOX                          | 52. INSTALL DELINEATOR MARKER                                                      | 63. DRILLCORE DRILL EXISTING FOUNDATION                           | 75. INSTALL OMNI ANTENNA                            |
| 5. INSTALL COAXIAL ANTENNA CABLE                                  | 17. INSTALL CABLE(S) IN EXISTING CONDUIT                                           | 29. INSTALL UNDERGROUND SPLICE ENCLOSURE                                               | 41. REMOVE EXISTING JUNCTION BOX                             | 53. STORE 50 FEET OF COMMUNICATIONS CABLE (EACH CABLE)                             | 64. INTERCEPT AND REROUTE EXISTING CONDUITS                       | 76. INSTALL 900 MHZ ETHERNET RADIO                  |
| 6. INSTALL FIBER-OPTIC DROP CABLE                                 | 18. INSTALL CABLE(S) IN NEW CONDUIT                                                | 30. INSTALL AERIAL SPLICE ENCLOSURE                                                    | 42. INSTALL WOOD POLE                                        | 54. LASH CABLE(S) TO EXISTING SIGNAL/COMMUNICATIONS CABLE                          | 65. BOND MESSENGER TO POLE GROUND                                 | 77. INSTALL CCTV METAL POLE                         |
| 7. INSTALL TRACER WIRE                                            | 19. INSTALL CABLE(S) IN EXISTING RISER(S)                                          | 31. INSTALL SPLICE CABINET                                                             | 43. REMOVE EXISTING WOOD POLE                                | 55. LASH CABLE(S) TO EXISTING MESSENGER CABLE                                      | 66. BOND RISER TO POLE GROUND                                     | 78. REMOVE WIRELESS COMMUNICATIONS EQUIPMENT        |
| 8. INSTALL CONDUIT UNDERGROUND                                    | 20. INSTALL CABLE(S) IN NEW RISER(S)                                               | 32. MODIFY EXISTING SPLICE ENCLOSURE OR INTERCONNECT CENTER                            | 44. INSTALL AERIAL GUY ASSEMBLY                              | 56. LASH CABLE(S) TO NEW MESSENGER CABLE                                           | 67. BOND TRACER WIRE TO EQUIPMENT GROUND BUS                      | 79. INSTALL CELLULAR MODEM                          |
| 9. INSTALL PVC CONDUIT                                            | 21. INSTALL CABLE(S) IN EXISTING CABINET ENTRANCE                                  | 33. REMOVE EXISTING SPLICE / HUB / CCTV CABINET                                        | 45. INSTALL STANDARD GUY ASSEMBLY                            | 57. MODIFY EXISTING ELECTRICAL SERVICE FOR CCTV                                    | 68. BOND TRACER WIRE TO POLE GROUND                               | 80. INSTALL YAGI ANTENNA                            |
| 10. INSTALL RIGID, GALVANIZED STEEL CONDUIT                       | 22. INSTALL NEW CONDUIT INTO CABINET BASE (USE EX CABINET ENTRANCE WHEN AVAILABLE) | 34. INSTALL CABINET FOUNDATION                                                         | 46. INSTALL SIDEWALK GUY ASSEMBLY                            | 58. INSTALL NEW ELECTRICAL SERVICE FOR CCTV OR RADIO                               | 69. HANDLASH AND INSTALL AERIAL CABLE PROTECTOR                   |                                                     |
| 11. INSTALL RIGID, GALVANIZED STEEL RISER WITH WEATHERHEAD        | 23. INSTALL NEW RISER INTO CABINET BASE (USE EX CABINET ENTRANCE WHEN AVAILABLE)   | 35. REMOVE EXISTING CABINET FOUNDATION                                                 | 47. INSTALL MESSENGER CABLE                                  | 59. INSTALL NEW POLE MOUNTED CCTV CABINET (336)                                    |                                                                   |                                                     |
| 12. INSTALL RIGID, GALVANIZED STEEL RISER WITH HEAT SHRINK TUBING | 24. INSTALL NEW CONDUIT INTO POLE MOUNTED CABINET                                  | 36. INSTALL CCTV CAMERA ASSEMBLY                                                       | 48. REMOVE EXISTING COMMUNICATIONS CABLE AND MESSENGER CABLE | 60. INSTALL NEW POLE MOUNTED CCTV CABINET (NEMA TYPE 4)                            |                                                                   |                                                     |



**ATKINS** 1616 EAST MILLBROOK ROAD, SUITE 160  
RALEIGH, NORTH CAROLINA 27609  
(919) 876-6888 NCBES #F-0326

**DOCUMENT NOT CONSIDERED FINAL UNLESS ALL SIGNATURES COMPLETED**

Prepared for the Offices of:

**NC Transportation**

Asheville Signal System  
Cable Routing Plans

Division 13 Buncombe County Asheville

PLAN DATE: December 2016 REVIEWED BY: M B Toth

PREPARED BY: J A Wiles REVIEWED BY:

REVISIONS

SCALE: 0 50 1"=50'

12/15/2016

MEISSA B. TOTH

CADD Filename: CL\_288.dgn

15-DEC-2016 14:10 D:\AT\reports\crp\crp6\off\c\curr\100048632 U-4715B Asheville Srg Sys\Task 11.CL\CL\_288.dgn WILE2054 AT-DUS300019