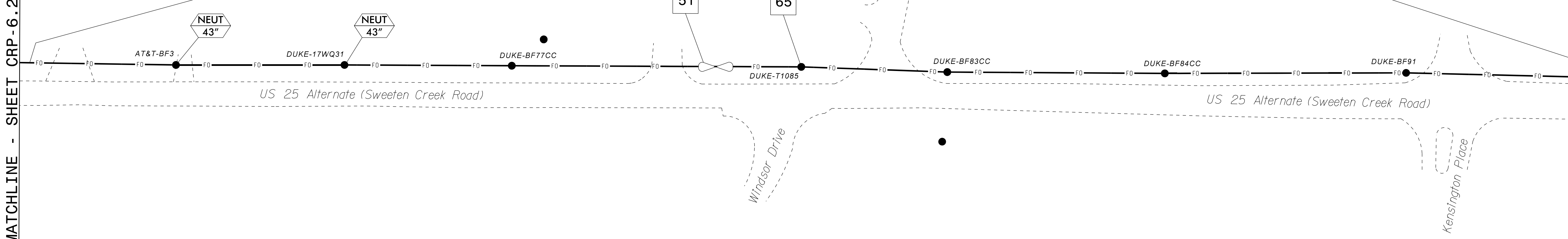


1 4 24
47
56

MATCHLINE - SHEET CRP-6.265

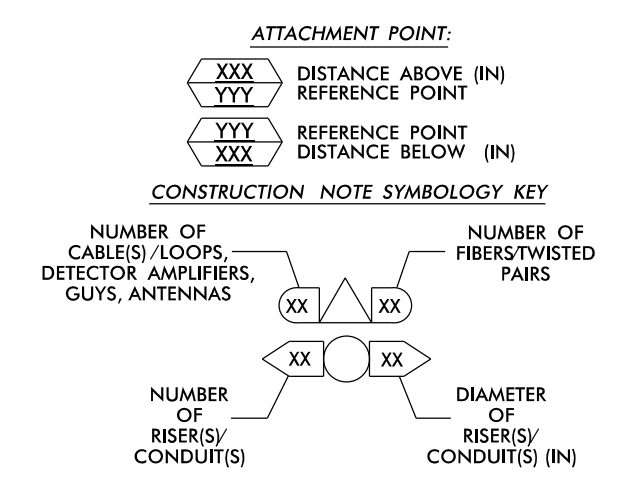
MATCHLINE - SHEET CRP-6.267



NOTES:

- 1. UNLESS OTHERWISE NOTED:
- OVERLASH NEW FIBER OPTIC CABLE TO EXISTING COMMUNICATIONS CABLE.
- ATTACH NEW MESSENGER CABLE 40" BELOW POWER.
- ATTACH ON FRONT SIDE (FS) OF POLE.
2. SEAL ALL CONDUIT ENDS WITH DUCT AND CONDUIT SEALER, AT ALL JUNCTION BOX / CABINET ENTRANCES.

Table with 4 columns of callout numbers and descriptions for various cable and equipment installation tasks, such as 'INSTALL COMPOSITE CCTV CABLE', 'INSTALL WIRELESS DSL', and 'INSTALL 900 MHZ RADIO WITH PANEL ANTENNA'.



ATKINS 1616 EAST MILLBROOK ROAD, SUITE 160 RALEIGH, NORTH CAROLINA 27609 (919) 876-6888 NCBEEES #F-0326

Project information block including 'Asheville Signal System Cable Routing Plans', 'Division 13 Buncombe County Asheville', 'Prepared by: J A Wiles', 'Reviewed by: M B Toth', and a professional seal for Melissa B. Toth, Engineer.

15-DEC-2016 14:09 D:\projects\atkins\crp\crp6\crp6.dwg U-4715B Asheville\116 Sig Sys\Task 11_C1.dwg 266.dgn AT DUS300019